

PLOTTED: Wednesday, August 21, 2019 @ 05:25PM

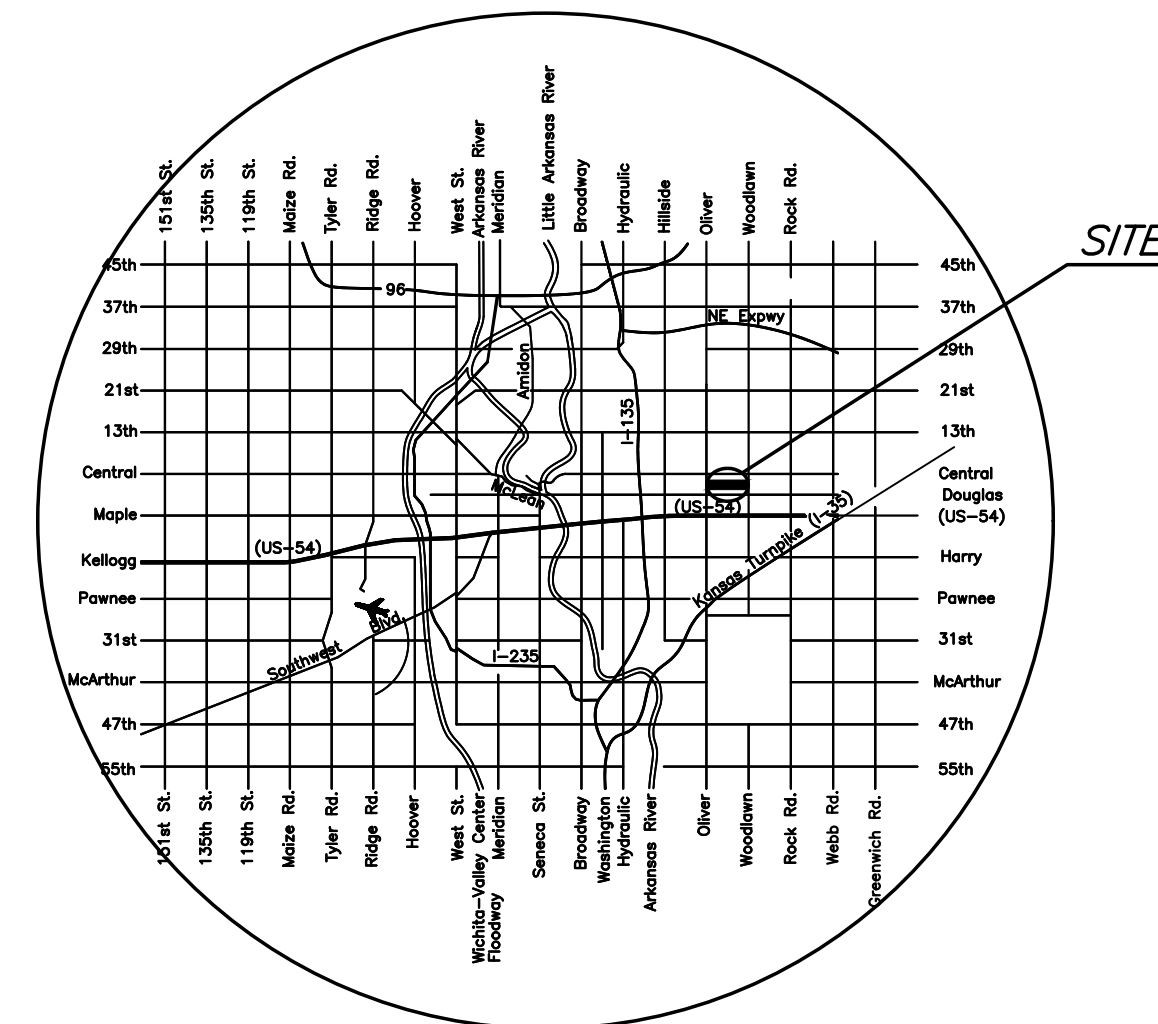
J:\PROJECTS\2019\1801010215_COW_2ND ST. BRIDGE AT BROOKSIDE\180316 CAD\SHOTS\05 CIVIL\GENERAL\180316_ET01.DWG

CONSTRUCTION PLANS FOR

2ND STREET BRIDGE AT BROOKSIDE

CITY OF WICHITA
 SEDGWICK COUNTY, KANSAS
 GARY L. JANZEN, P.E. - CITY ENGINEER

C.O.W. PROJECT NO. 472-85435 (PAVING)
 C.O.W. OCA NO. 715739 (PAVING)
 C.O.W. PROJECT NO. 468-85410 (SANITARY)
 C.O.W. OCA NO. 628108 (SANITARY)



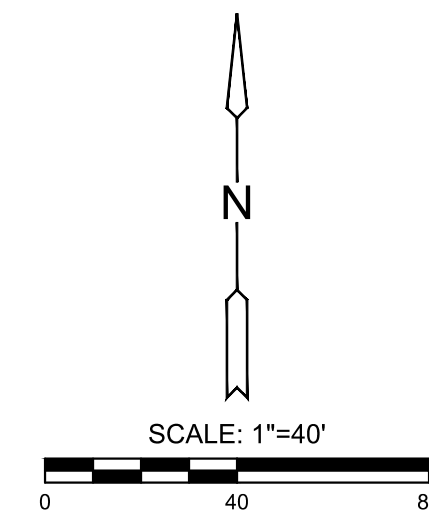
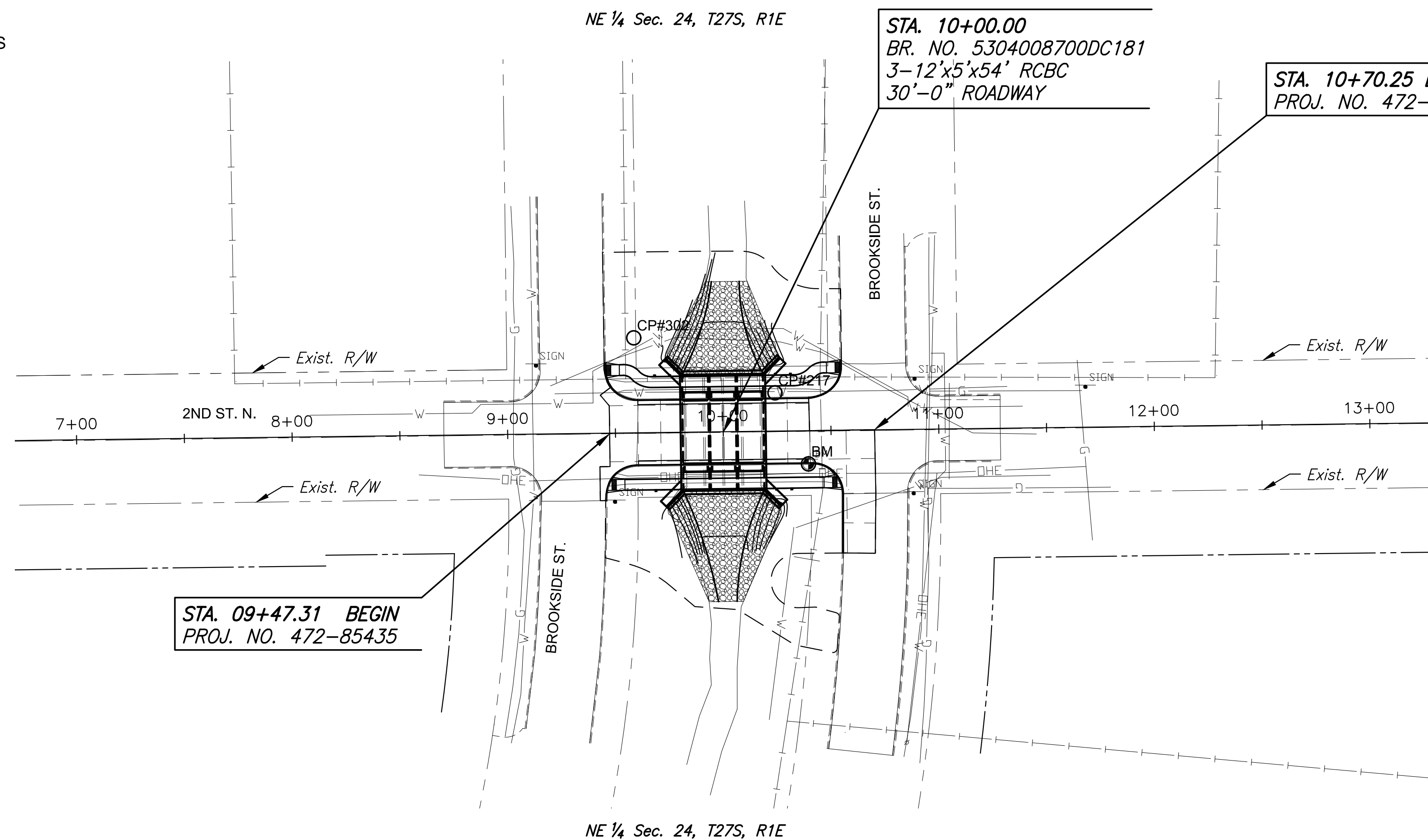
LOCATION MAP

INDEX TO DRAWINGS

SHEET NO.	DESCRIPTION
1	TITLE SHEET
2	GENERAL NOTES
3	TYPICAL SECTIONS
4	PLAN & PROFILE
5-8	PAVING DETAILS
9	STORM SEWER PLAN & PROFILE
10-15	STORM SEWER DETAILS
16	SANITARY SEWER PLAN & PROFILE
17-18	SANITARY SEWER DETAILS
19	PROJECT BUBBLE MAP
20-30	BRIDGE PLAN & DETAILS
31	SUMMARY OF QUANTITIES
32-37	EROSION CONTROL PLAN & DETAILS
38	ROADSIDE IMPROVEMENT PLAN AND DETAILS
39-40	SIGNING PLAN & DETAILS
41-45	TRAFFIC CONTROL PLAN & DETAILS
46	DRAINAGE MAP
47-48	CROSS SECTIONS

BENCHMARKS & CONTROL POINTS

- BM
 SQR CUT
 ELEV.=1357.63 NAVD 88
 N=1687547.1, E=1668902.4
- BM #10
 C.O.W. BRASS DISK
 ELEV.=1353.87 NAVD 88
 N=1686268.5, E=1668573.8
- CP #217
 CP / EIBC #5 MKEC DESIGN POINT
 ELEV.=1358.12 NAVD 88
 N=1687580.08, E=1668886.90
- CP #301
 CP / IBSC #301
 ELEV.=1358.21 NAVD 88
 N=1687746.53, E=1668832.85
- CP #302
 CP / IBSC #302
 ELEV.=1358.70 NAVD 88
 N=1687605.60, E=1668821.37
- CP #303
 CP / IBSC #303
 ELEV.=1356.64 NAVD 88
 N=1687307.51, E=1668867.05



CONSTRUCTION PLANS FOR

2ND STREET BRIDGE AT BROOKSIDE

WICHITA, KS



©2019
 MKEC Engineering
 All Rights Reserved
 www.mkec.com
 These drawings and their contents, including, but not limited to, all concepts, designs, & ideas are the exclusive property of MKEC Engineering (MKEC), and may not be used or reproduced in any way without the express consent of MKEC.

TITLE SHEET

PROJECT NO.	472-85435	
DATE	JULY 2019	
SCALE	1"=40'	
DESIGNED	DRAWN	CHECKED
JRA	BKS	JRA

NO.	REVISION	DATE

SHEET NO.

