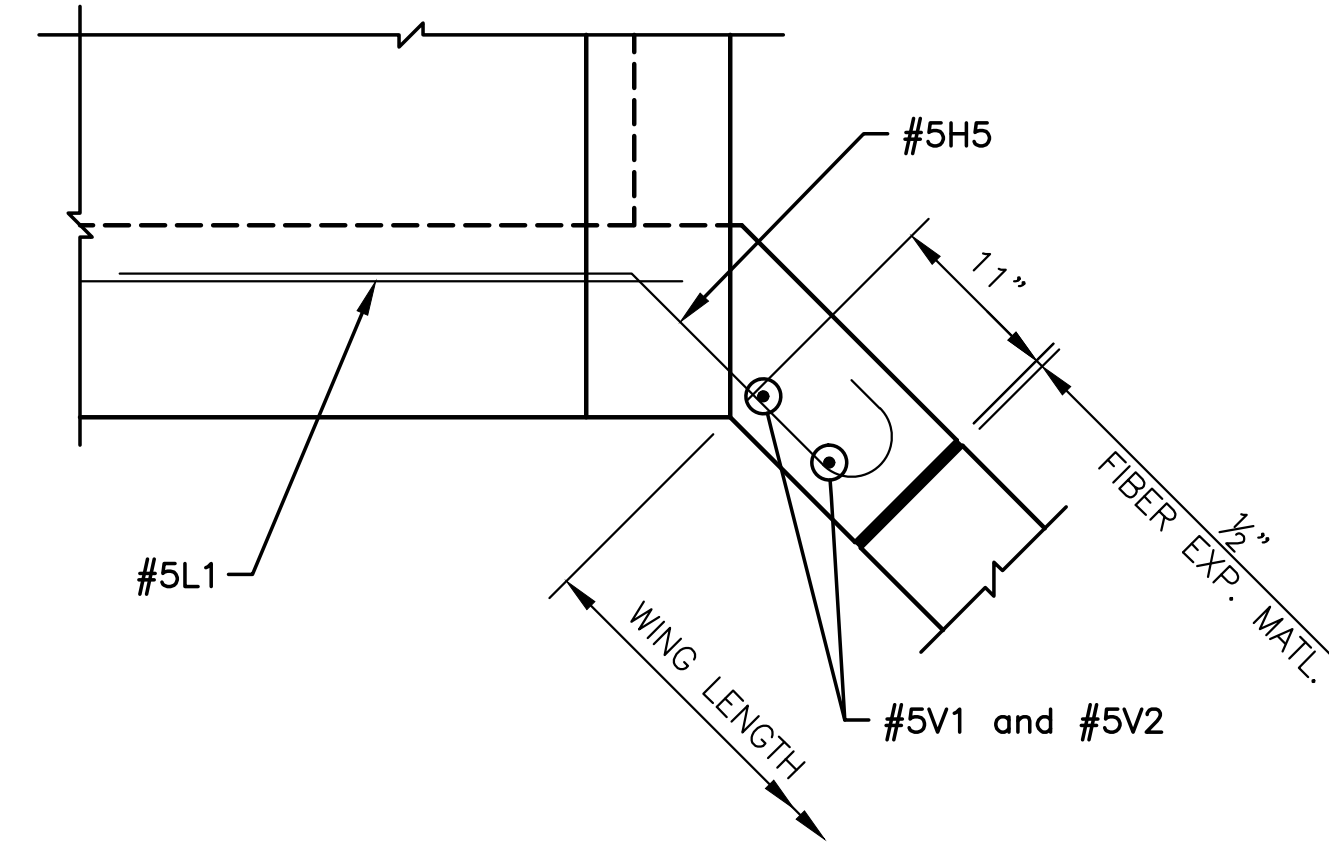
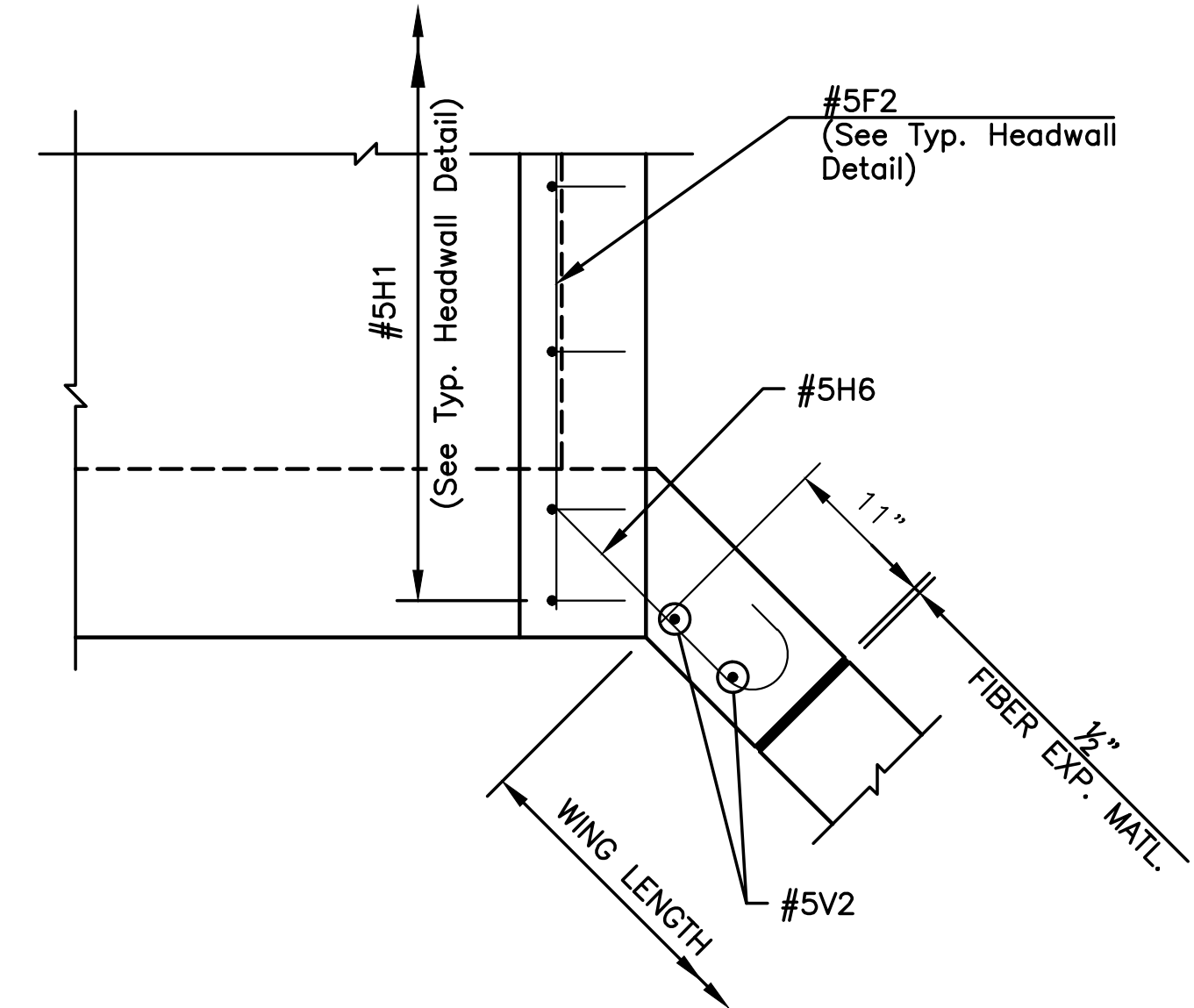


PLOTTED: Friday, July 26, 2019 @ 09:22AM

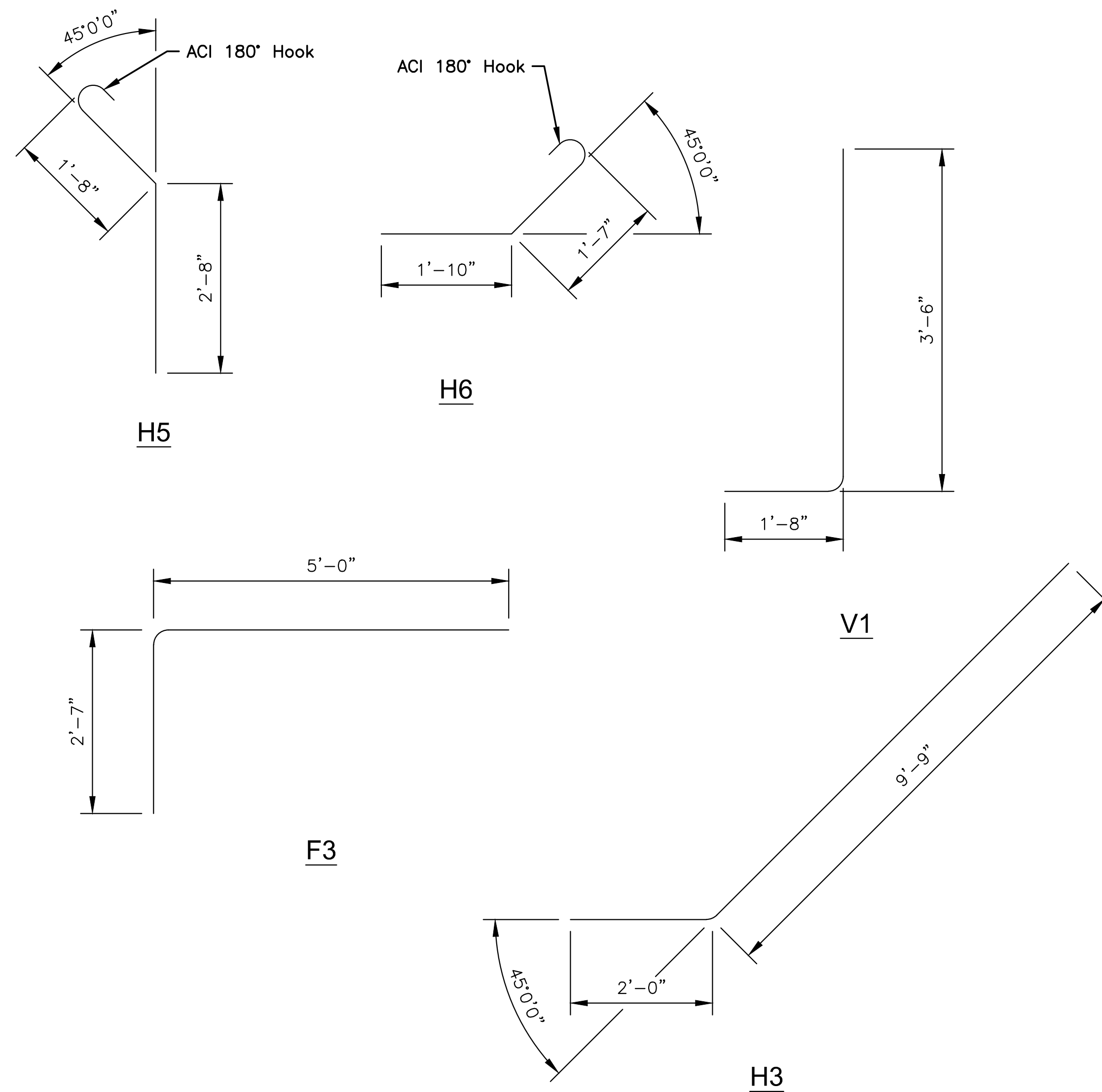
J:\PROJECTS\2018\1801010315_COW_2ND ST. BRIDGE AT BROOKSIDE\180315 CAD\SHOTS\05 CIVIL\BRIDGE\180315-BR03.DWG



WING WALL JOINT DETAIL BELOW TOP SLAB
(PLAN VIEW @ Wingwall)



WING WALL JOINT DETAIL ABOVE TOP SLAB
(PLAN VIEW @ Wingwall)



BAR BENDING DIAGRAMS

Note: All dimensions are out to out of bars.

FOR INFORMATION ONLY

BILL OF REINFORCING STEEL
(Grade 60, Epoxy-Coated)

Straight Bars				Bent Bars			
Mark	Size	No.	Length	Mark	Size	No.	Length
H2	#5	20	15'-1"	F3	#5	80	7'-7"
H4	#5	36	8'-9"	H3	#5	16	11'-9"
V2	#5	80	6'-0"	H5	#5	28	4'-11"
				H6	#5	8	4'-0"
				V1	#5	80	5'-2"

FOR INFORMATION ONLY

SUMMARY OF QUANTITIES
(Wingwalls Only)

Concrete (Grade 4.0)	19.9 C.Y.
Reinforcing Steel (Gr. 60)(Epoxy-Coated)	2,590 Lbs.
Class III Excavation	150.0 C.Y.
Concrete for Seal Course	3.0 C.Y.
Granular Backfill (Wingwalls)	110.0 C.Y.

Note: Quantities shown are for information only. All labor, materials, and equipment required for construction of RCBC shall be considered subsidiary to the bid item "Pipe, SWS, RCBC (3-12"x5)".

©2019
MKEC Engineering
All Rights Reserved
www.mkec.com
These drawings and their contents, including, but not limited to, all concepts, designs, & ideas are the exclusive property of MKEC Engineering (MKEC), and may not be used or reproduced in any way without the express consent of MKEC.

FLARED WINGWALL
(SHEET 2 OF 2)

PROJECT NO.	472-85435
DATE	JULY 2019
SCALE	NTS
DESIGNED	J.T.H.
DRAWN	J.D.H.
CHECKED	J.T.H.

NO.	REVISION	DATE

SHEET NO.
24 OF 48