

PLOTTED: Wednesday, August 21, 2019 @ 08:19PM

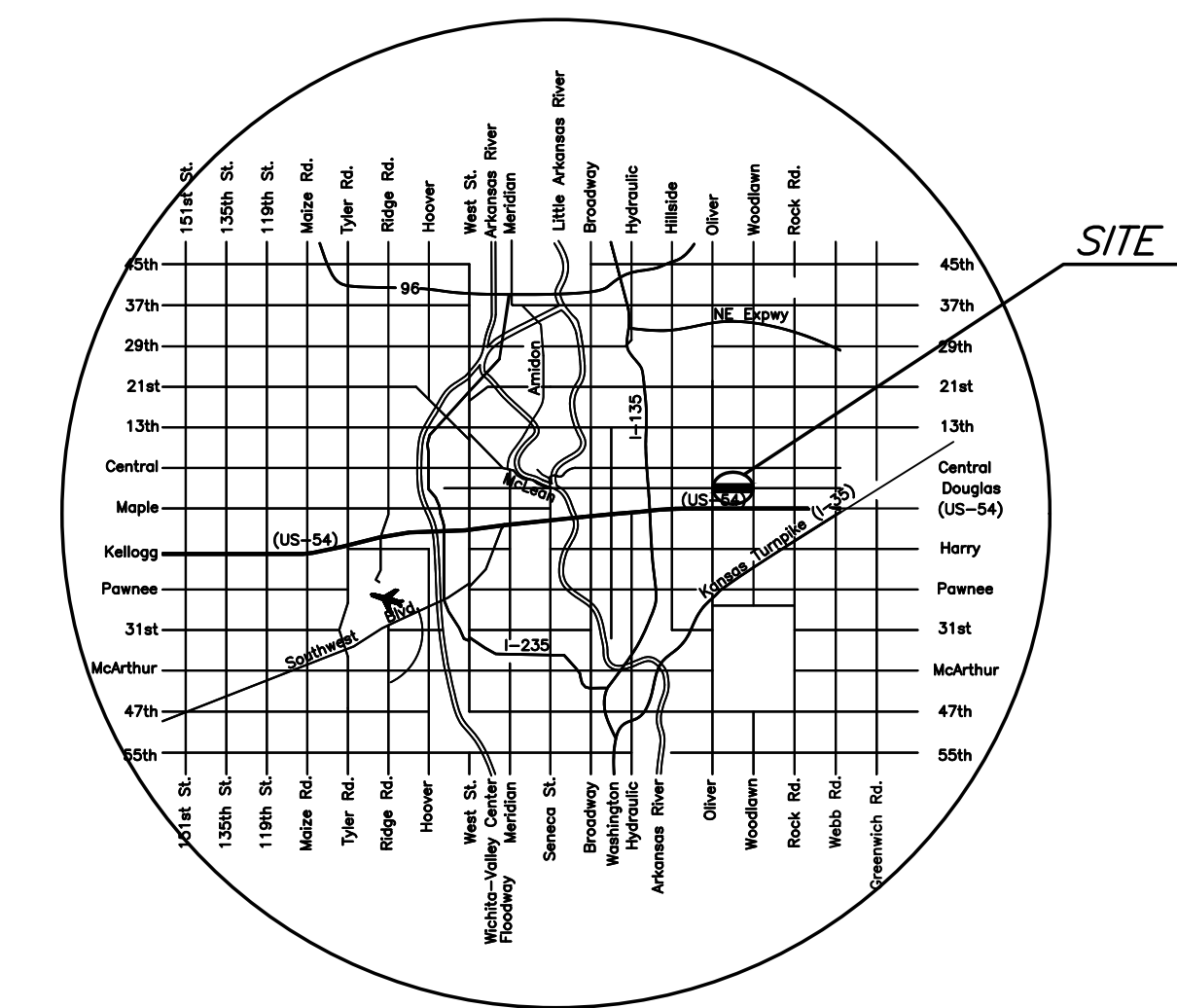
J:\PROJECTS\2019\1801010316_COW_DOUGLAS ST. BRIDGE AT BROOKSIDE_180316\CAD\SHOTS\06_CIVIL\PAV1816 TITLEDWG

CONSTRUCTION PLANS FOR

DOUGLAS STREET BRIDGE AT BROOKSIDE

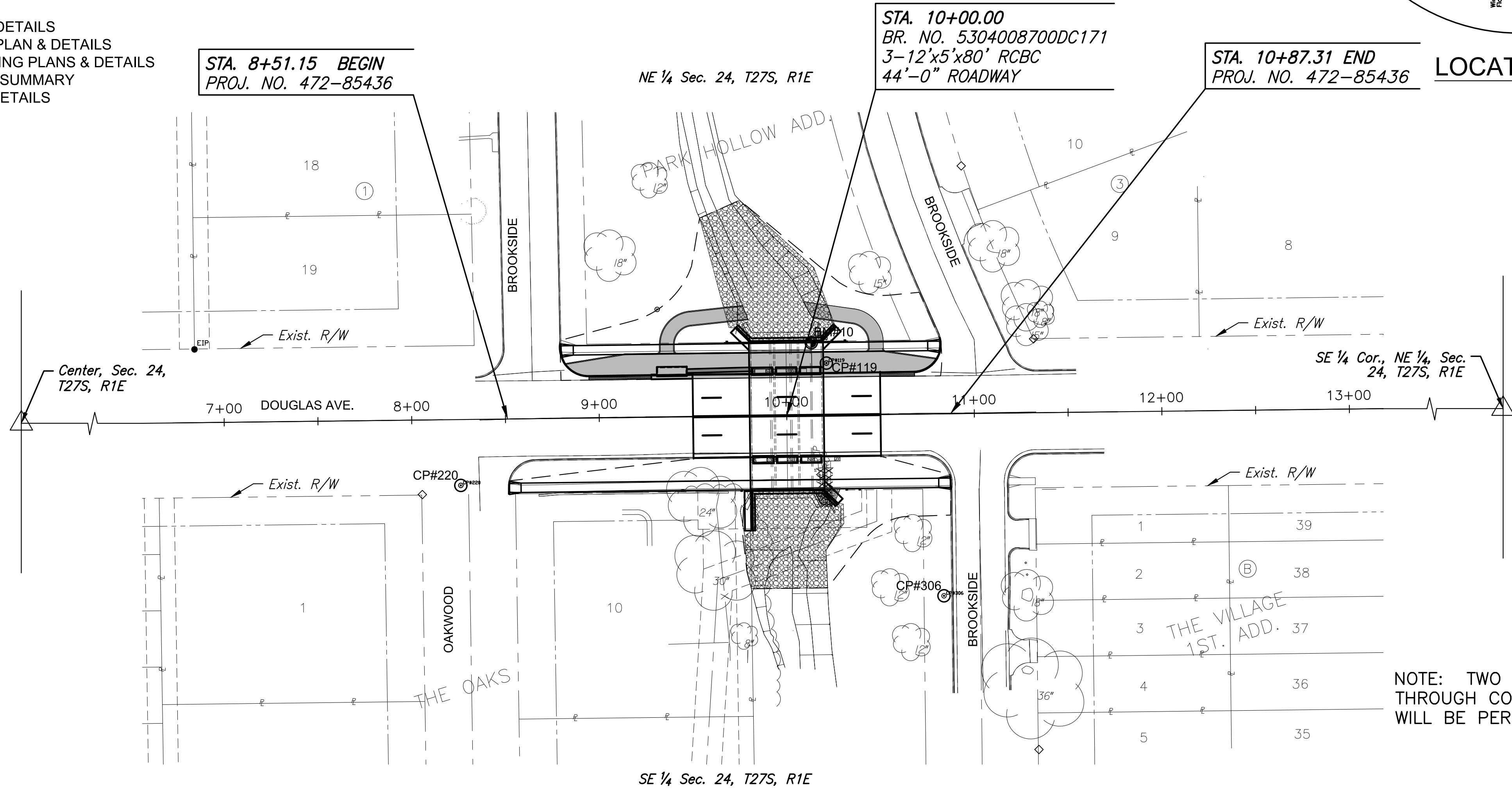
CITY OF WICHITA
 SEDGWICK COUNTY, KANSAS
 GARY L. JANZEN, P.E. - CITY ENGINEER

C.O.W. PROJECT NO. 472-85436
 C.O.W. OCA NO. 715740
 C.O.W. PROJECT NO. 468-85410 (SANITARY)
 C.O.W. OCA NO. 628108 (SANITARY)



INDEX TO DRAWINGS

SHEET NO.	DESCRIPTION
1	TITLE SHEET
2	GENERAL NOTES
3	TYPICAL SECTIONS
4	PLAN AND PROFILE
5-7	PAVING DETAILS
8	STORM SEWER PLAN & PROFILE
9-13	STORM SEWER DETAILS
14	PROJECT BUBBLE MAP
15-27	BRIDGE PLAN & DETAILS
28	SUMMARY OF QUANTITIES
29-34	EROSION CONTROL PLAN & DETAILS
35	ROADSIDE IMPROVEMENTS PLAN & DETAILS
36	PAVEMENT MARKING & SIGNING PLANS & DETAILS
37	CONSTRUCTION SEQUENCE SUMMARY
38-48	TRAFFIC CONTROL PLAN & DETAILS
49	DRAINAGE MAP
50-51	CROSS SECTIONS



BENCHMARKS & CONTROL POINTS

- BM
 SQR CUT
 ELEV.=1357.63 NAVD 88
 N=1687547.1, E=1668902.4
- BM #10
 C.O.W. BRASS DISK
 ELEV.=1353.87 NAVD 88
 N=1686268.5, E=1668573.8
- CP #119
 CP / #5 EIBC MKEC
 ELEV.=1353.64 NAVD 88
 N=1686257.58, E=1668581.87
- CP #220
 CP / CST NL FND IN ASPH
 ELEV.=1353.85 NAVD 88
 N=1686192.39, E=1668386.96
- CP #304
 CP / IBSC #304
 ELEV.=1352.28 NAVD 88
 N=1686501.39, E=1668531.64
- CP #306
 CP / IBSC #306
 ELEV.=1352.65 NAVD 88
 N=1686133.55, E=1668644.58

NOTE: TWO WAY TRAFFIC TO BE CARRIED THROUGH CONSTRUCTION. LOCAL TRAFFIC WILL BE PERMITTED TO ADJACENT PROPERTIES.



CONSTRUCTION PLANS FOR
DOUGLAS STREET BRIDGE AT BROOKSIDE
 WICHITA, KS

©2019 MKEC Engineering All Rights Reserved
 www.mkec.com
 These drawings and their contents, including, but not limited to, all concepts, designs, & ideas are the exclusive property of MKEC Engineering (MKEC), and may not be used or reproduced in any way without the express consent of MKEC.

TITLE SHEET

PROJECT NO.	472-85436	
DATE	JULY 2019	
SCALE	1"=40'	
DESIGNED	DRAWN	CHECKED
JRA	BKS	JRA

NO.	REVISION	DATE

SHEET NO.
 1 OF 51