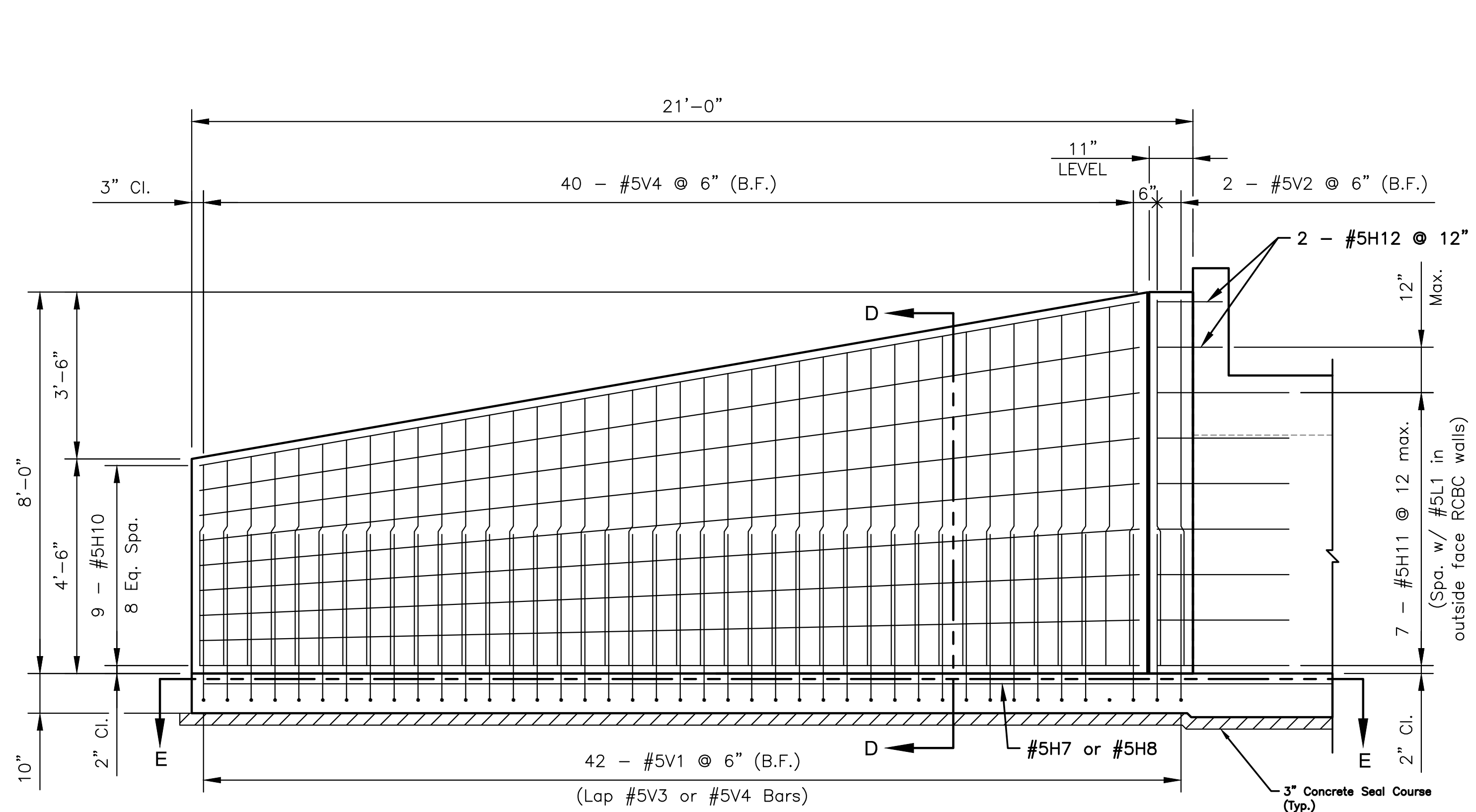
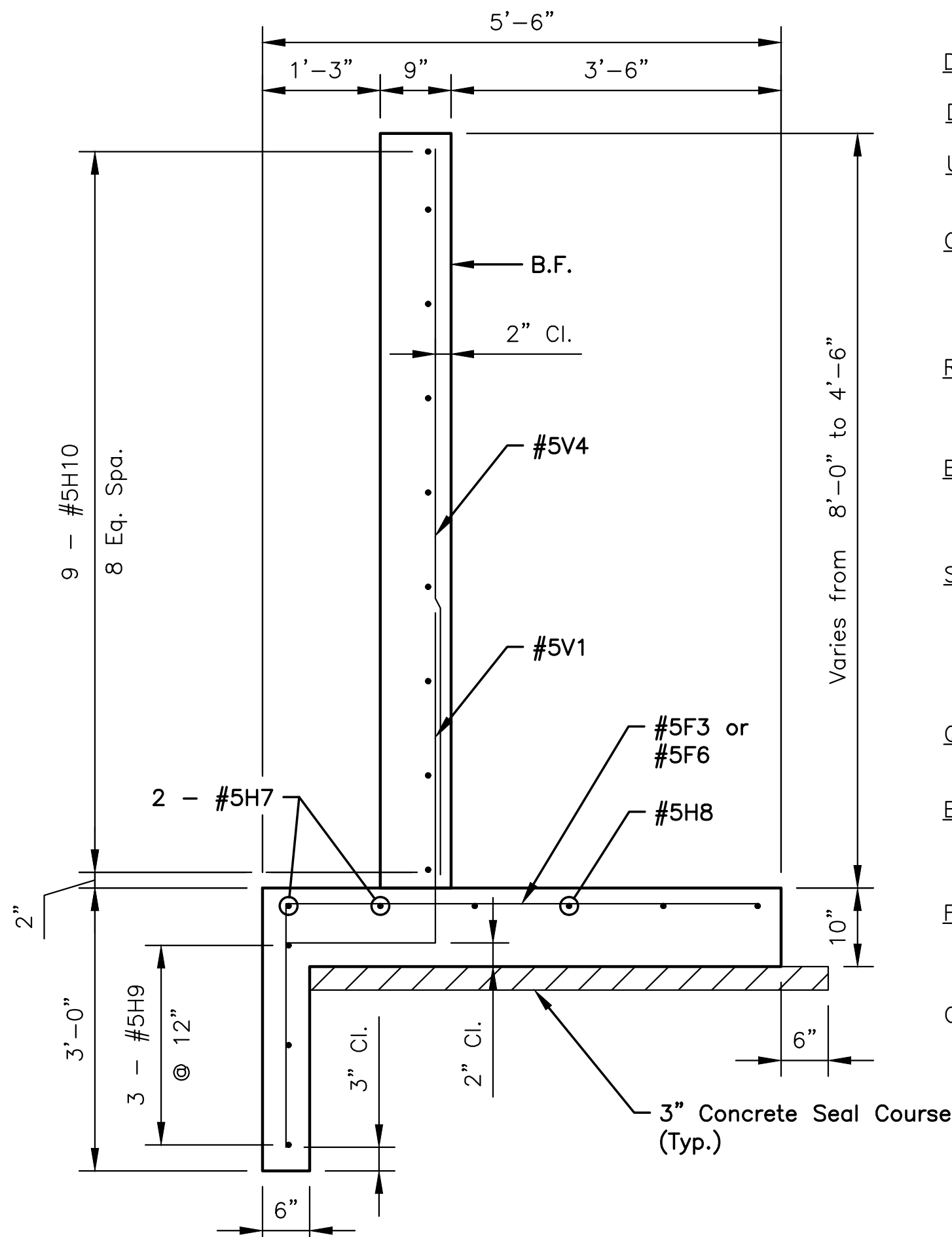


PLOTED: Friday, July 26, 2019 @ 09:32AM

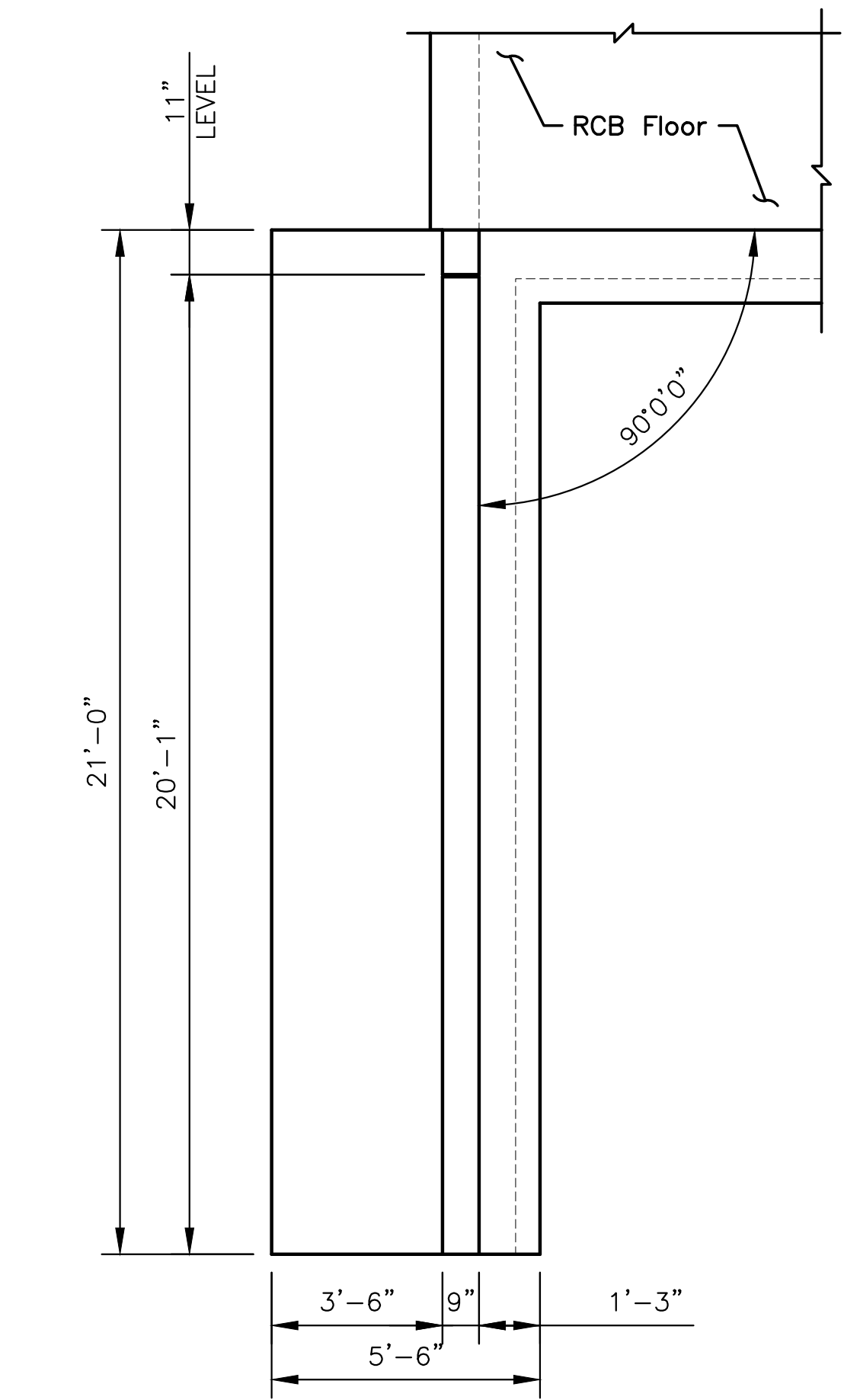
J:\PROJECTS\2019\1801010316\_COW\_DOUGLAS ST. BRIDGE AT BROOKSIDE\180316\_CAD\SHOTS\06\_CIVIL\BRIDGE\18316-BR03.DWG



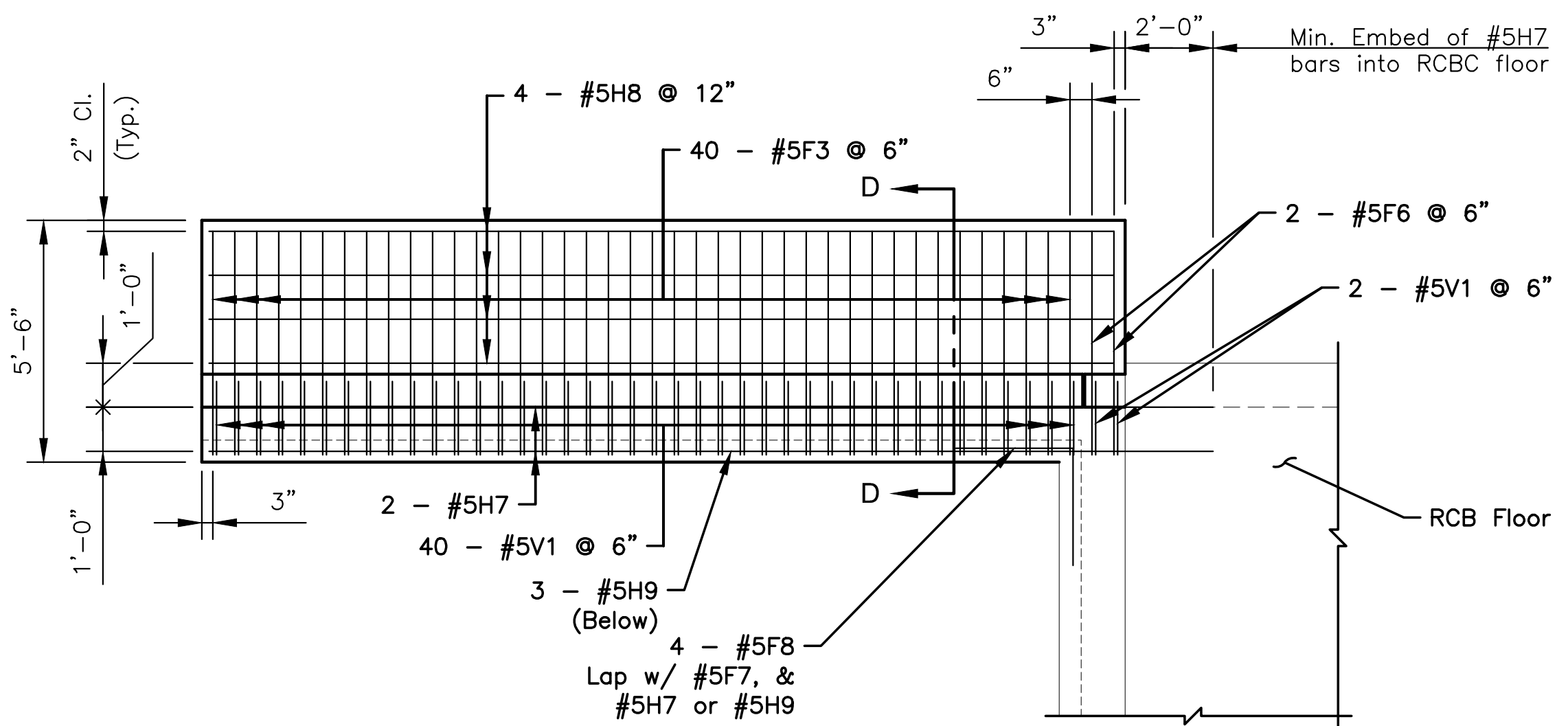
**WINGWALL ELEVATION**  
(Phase 2 - S.W. Wingwall)  
(Back Face Shown)



**SECTION D-D**



**WING DIMENSIONS (TYP.)**  
(Phase 2 - S.W. Wingwall)



Note: See Wingwall Joint Detail for additional Dimension.

**SECTION E-E**

**WINGWALL GENERAL NOTES**

- DESIGN SPECIFICATION:** AASHTO LRFD Bridge Specifications, 8th Edition
- DESIGN LOADING:** HL-93
- UNIT STRESSES:** Grade 4.0 Concrete  $f'_c = 4,000$  p.s.i.  
Reinforcing Steel:  $f_y = 60,000$  p.s.i.
- CONCRETE:** Grade 4.0 Concrete shall be used throughout. Bevel all exposed edges with a 3/4 inch triangular moulding. Prior to casting concrete against a previous casting, all concrete joint surfaces shall have a brush sandblast, power wash, and water soaked prior to casting.
- REINFORCING:** All reinforcing shall conform to ASTM A615, Grade 60. All dimensions relative to reinforcing steel shall be to centerline of bar unless otherwise noted.
- EXCAVATION:** Class III Excavation for RCB Bridges shall be considered subsidiary to the bid item "Pipe, SWS, RCBC, (3-12'x5")", see "Bridge Excavation" sheet.
- SEAL COURSE:** A Seal Course is required. The Seal Course shall be unreinforced Concrete (Commercial Grade) to a minimum depth of 3 inches or as determined by the Engineer. Concrete for the seal course shall be considered subsidiary to the bid item "Pipe, SWS, RCBC, (3-12'x5)".
- QUANTITIES:** Wingwall Quantities include all quantities outside the neat lines of the box, excluding the hubguard.
- BACKFILL MATERIAL:** Use granular Backfill material meeting the requirements of SB-1, SB-2, SCA-2, SCA-3 or SCA-5. Backfill all wings to limits shown on the "RCB Auxiliary Sheet".
- FILTER FABRIC:** Separate in-situ material from granular backfill with approved filter Fabric complying with Section 1710 of the KDOT Standard Specifications.
- GRANULAR BACKFILL (WINGWALLS):** See the "Auxiliary Details" sheet.

FOR INFORMATION ONLY

SUMMARY OF QUANTITIES - PHASE 2 (Wingwalls Only)	
Concrete (Grade 4.0)	12.6 C.Y.
Reinforcing Steel (Gr. 60)(Epoxy-Coated)	1,910 Lbs.
Class III Excavation	132.3 C.Y.
Concrete for Seal Course	1.7 C.Y.
Granular Backfill (Wingwalls)	97.1 C.Y.

Note: Quantities shown are for information only. All labor, materials, and equipment required for construction of RCB shall be considered subsidiary to the bid item "Pipe, SWS, RCBC (3-12'x5)".



**CONSTRUCTION PLANS FOR**  
**DOUGLAS STREET BRIDGE AT BROOKSIDE**  
**WICHITA, KS**

©2019 MKEC Engineering All Rights Reserved www.mkec.com  
These drawings and their contents, including, but not limited to, all concepts, designs, & ideas are the exclusive property of MKEC Engineering (MKEC), and may not be used or reproduced in any way without the express consent of MKEC.

**FLARED WINGWALL  
(SHEET 2 OF 3)**

PROJECT NO.	472-85436	
DATE	JULY 2019	
SCALE	N.T.S.	
DESIGNED	DRAWN	CHECKED
JTH	JDH	JTH

NO.	REVISION	DATE