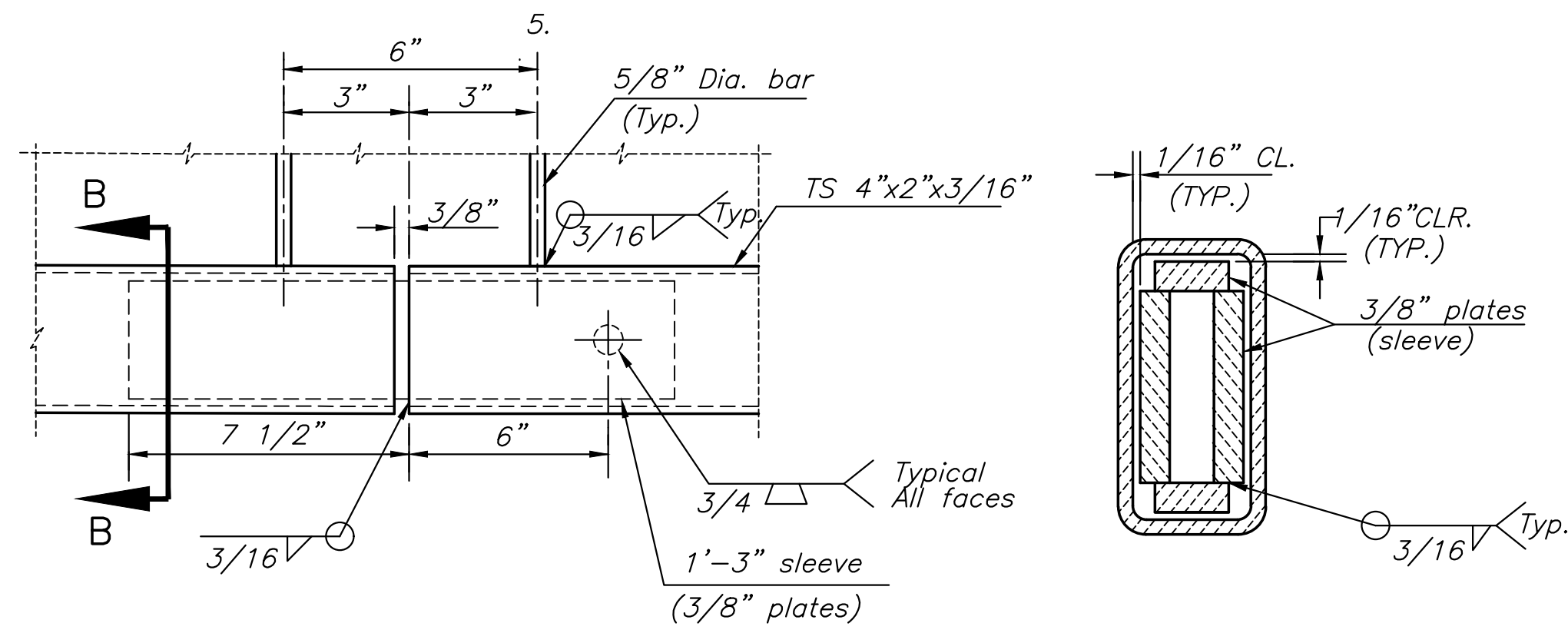
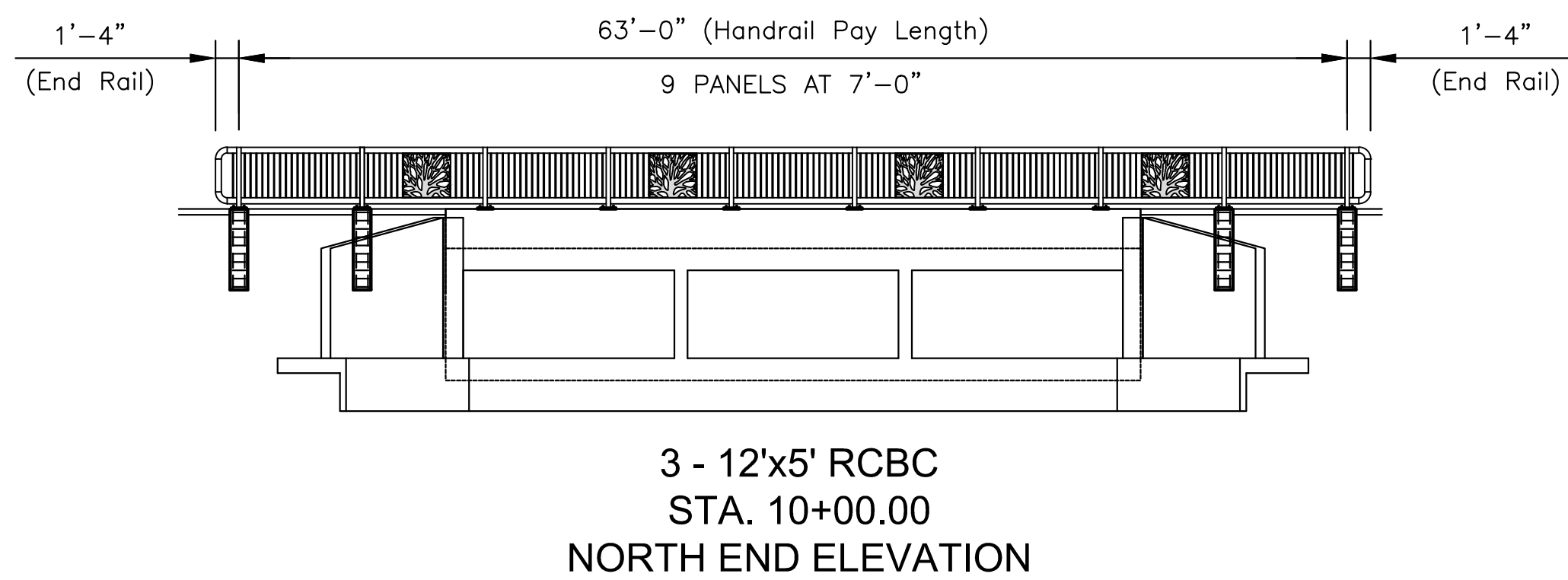


J:\PROJECTS\2018\1801010316_COW_DOUGLAS ST. BRIDGE AT BROOKSIDE\180116 CAD\SHOTS\06 CIVIL\BRIDGE\18316-HANDRAIL.DWG
 PLOTTED: Friday, July 26, 2019 @ 09:33AM

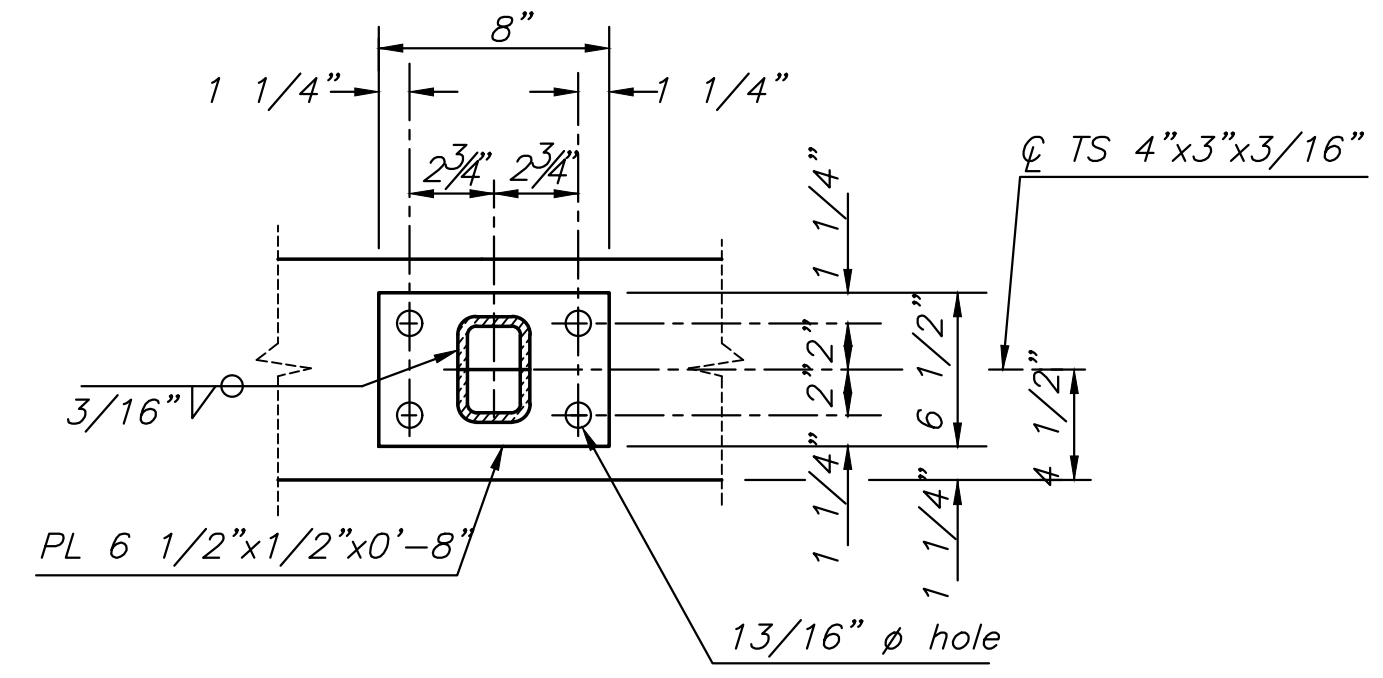
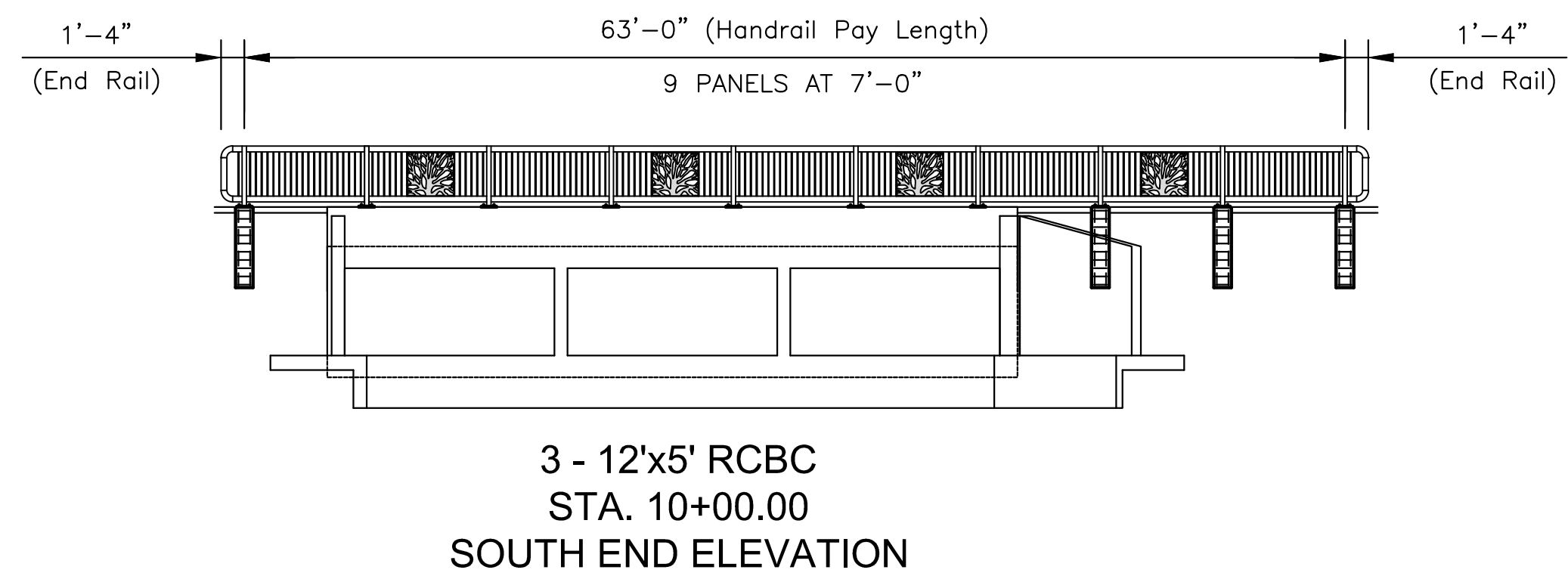


SLEEVE DETAIL
No scale
(bottom rail shown, top rail similar)

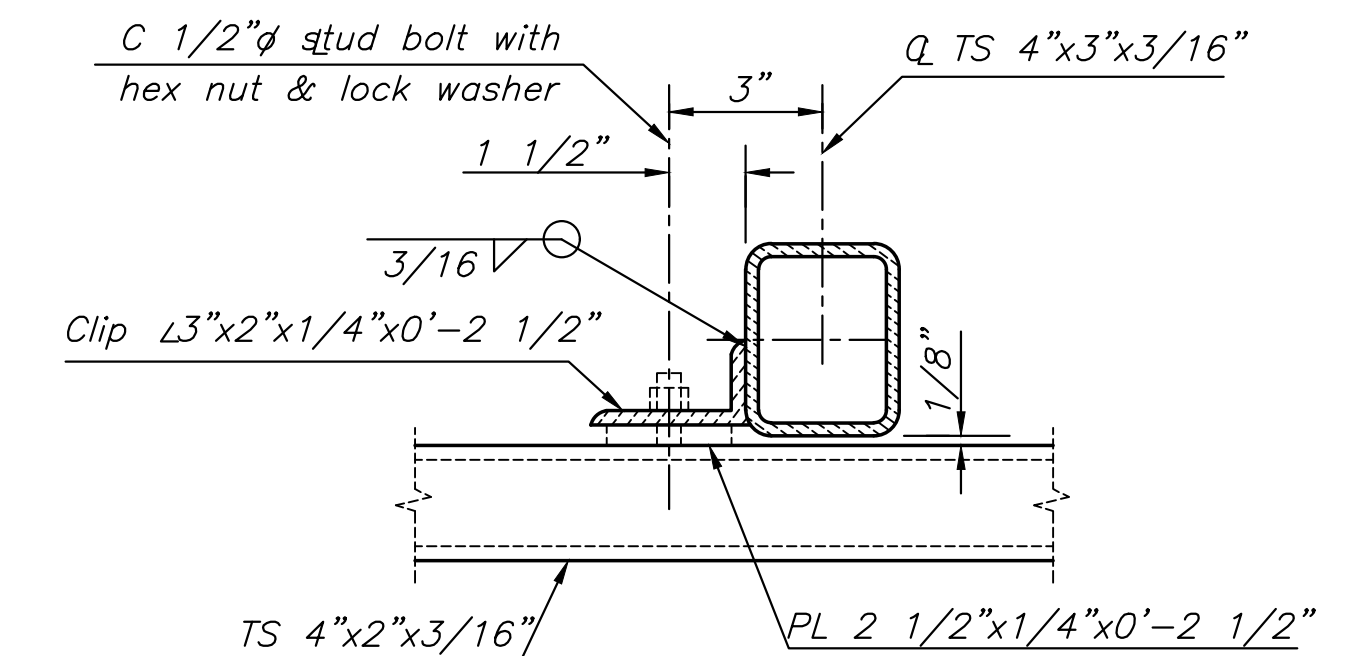
SECTION B-B
No scale

HANDRAIL NOTES:

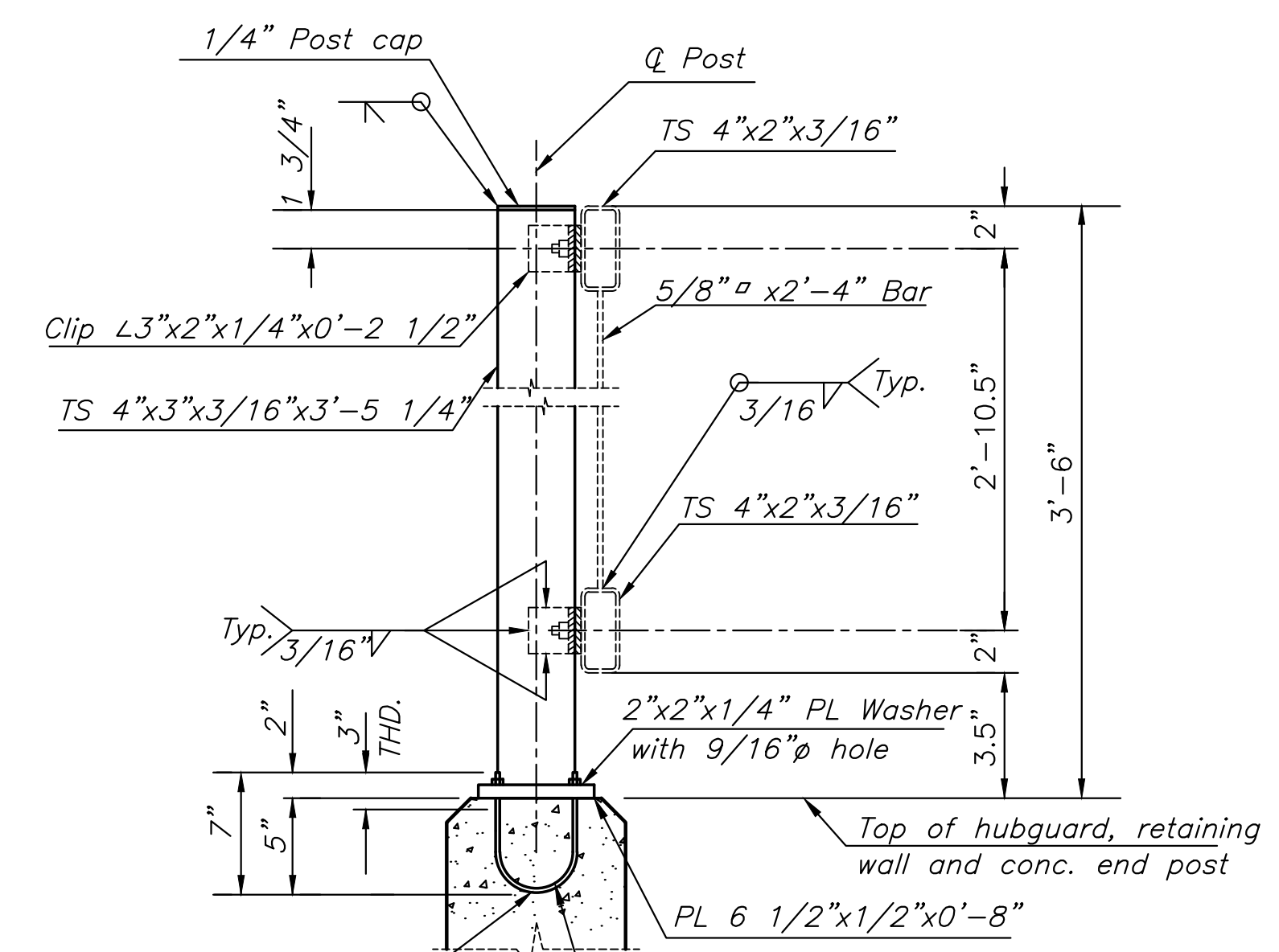
1. The rail members shall conform to ASTM designation A36 or equivalent.
2. Rail shall be fabricated in lengths to include a minimum of two and a maximum of three panels. Posts shall be set vertical. Shims may be used between concrete and base plates of posts.
3. All parts of handrail shall be painted. The primer coat shall conform to the inorganic Zinc system. Surface preparation shall be in accordance with that for structural steel. The finish coat shall be in accordance with water-borne acrylic finish coat. All materials, equipment and labor necessary for the installation of the handrail shall be subsidiary to the bid item.
4. Handrail shall be painted Sherwin Williams color SW 6461 (Isle of Pines) or approved equal. The contractor shall submit color chart for approval by the City.
5. Rail shall be paid for as "Handrail (Metal)(3'-6")".



BASE PLATE DETAIL
No scale

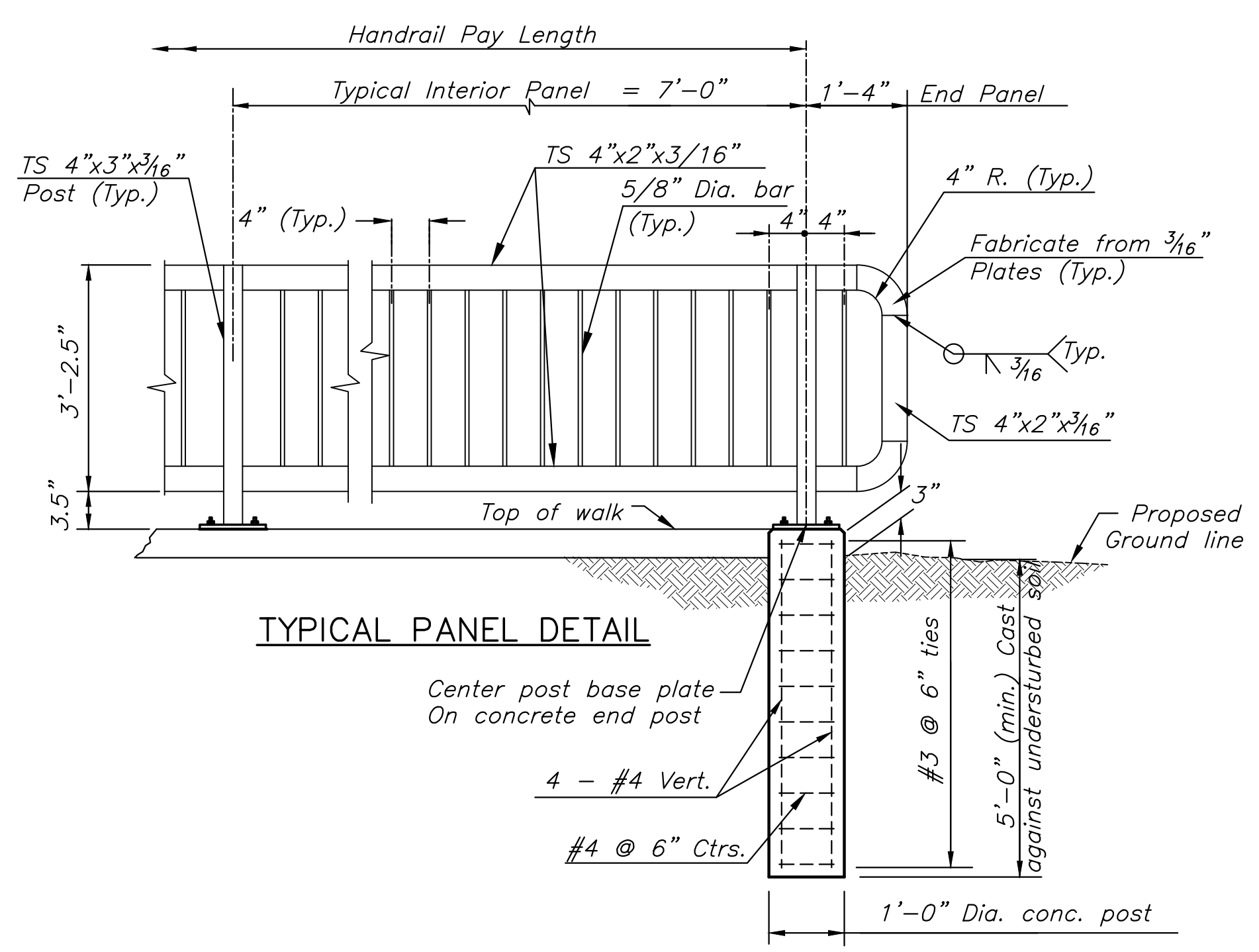


RAIL CONNECTION DETAIL
No scale



1/2" U-bolts w/hex nuts, PL Wshrs & lock wshrs (all galv.) or Adhesive Anchoring System, 1/2" dia. x 4 1/2" min. embedment. Use the manufacture's recommended installation system. The Anchoring System details, load capacity and installation instructions shall be provided to the Engineer for approval prior to installation.

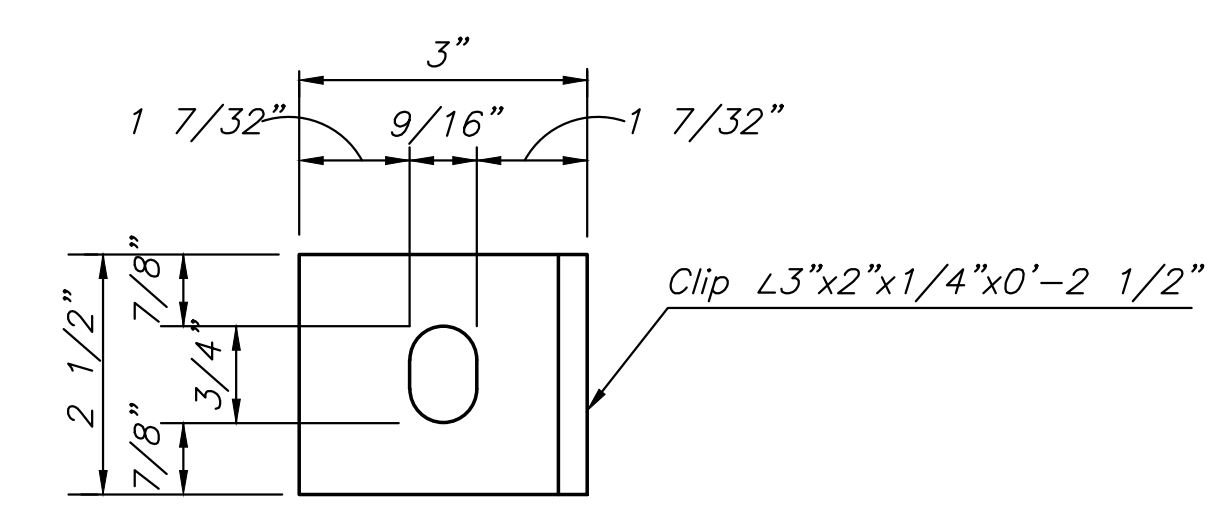
TYPICAL RAIL SECTION
No scale



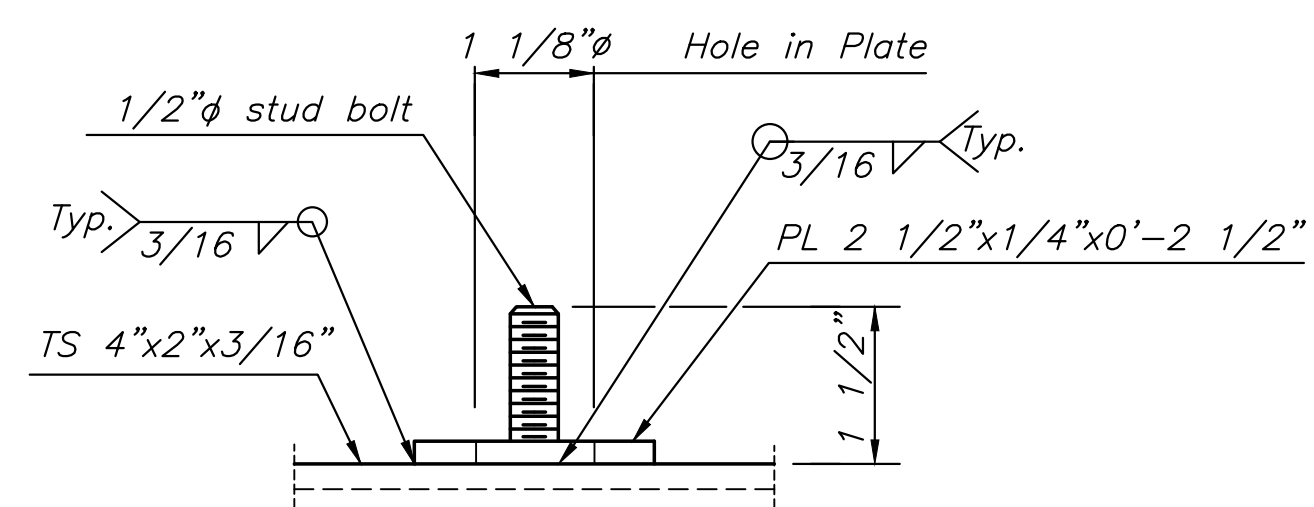
TYPICAL PANEL DETAIL

CONCRETE POST DETAIL

Concrete Footing shall be Subsidiary to "Handrail (Metal)(3'-6")". Locate concrete post where specified on plans



CLIP DETAIL
No scale



STUD BOLT DETAIL
No scale



CONSTRUCTION PLANS FOR
DOUGLAS STREET BRIDGE AT BROOKSIDE
 WICHITA, KS

©2019 MKEC Engineering All Rights Reserved www.mkec.com
 These drawings and their contents, including, but not limited to, all concepts, designs, & ideas are the exclusive property of MKEC Engineering (MKEC), and may not be used or reproduced in any way without the express consent of MKEC.

PEDESTRIAN HANDRAIL DETAILS

PROJECT NO.	472-85436	
DATE	JULY 2019	
SCALE	N.T.S.	
DESIGNED	DRAWN	CHECKED
XXX	JDH	XXX

NO.	REVISION	DATE