

# GENERAL NOTES:

1. Contractor will be required to provide notice to utility companies a minimum of seventy-two (72) hours prior to any excavation, as follows:

Kansas One-Call 687-2470

The Contractor must notify the following in case of an emergency:

AT&T 1-800-246-8464  
 Black Hills Energy 1-800-694-8989  
 City of Wichita Water & Sewer 1-316-219-8921  
 City of Wichita Stormwater 1-316-268-4090  
 City of Wichita Traffic 1-316-268-4034  
 Cox Communications 1-888-249-3530  
 Kansas Gas Service 1-888-482-4950  
 Westar Energy 1-800-544-4857

2. Utility service lines, poles, etc. are to be adjusted as necessary by others prior to construction unless the plans specifically call for their adjustment by the Contractor or unless the plans specifically identify a utility to be adjusted by its owner during construction. Existing utilities and their location, as shown on the plans, represent the best information obtainable for design. The Contractor will be required to work around existing utilities within the right-of-way which do not conflict with proposed construction.

3. Rubble from the removal of miscellaneous structures and excess excavation which is to be wasted shall be disposed of on sites to be provided by the Contractor. These sites shall be approved by the Engineer as to suitability, appearance and site location. Locations, in the opinion of the Engineer, that will leave an unsightly appearance will not be approved. All disposal sites must be approved by the Kansas Department of Health and Environment. Material either stockpiled or disposed of in a flood plain will require a Kansas State Board of Agriculture permit. Any material dumped in waters of the United States or wetlands is subject to U.S. Corps. of Engineers permitting regulations. Any material buried or stockpiled beyond approved construction limits will require additional archaeological investigations unless buried in a previously approved borrow location.

4. Trees and shrubs in public right-of-way which are in direct conflict with proposed new construction shall be removed by the Contractor with the City Engineer's approval. Trees and shrubs which are not in direct conflict with proposed new construction shall be saved and protected from damage.

5. The Contractor shall give all property owners and/or tenants of developed property abutting the construction of this project a minimum of ten (10) days notice prior to start of construction.

6. The Contractor shall be responsible for preserving property irons. The Contractor will be required to re-establish any property irons which are damaged or destroyed by his construction operations. Such irons shall be re-established by a licensed land surveyor in accordance with state laws.

7. All elevations shown are City Datum.

8. A saw cut of at least one-half the depth of existing surface courses or one-fourth the depth of the existing total pavement thickness shall be provided at locations where proposed construction abuts the existing surface course or pavement for which partial removal of that surface or pavement is required. Sawed joint to facilitate removal within three (3) feet of existing joints will not be permitted and for such instances the limits of removal shall extend to the existing joint. Such saw cuts will not be paid for directly and this cost shall be considered as subsidiary to the removal of the surface or pavement.

9. All existing and proposed erosion control measures including silt fencing, erosion control mat, straw bales, inlet barriers, and const. entrance shall be maintained throughout construction by the contractor and until project is accepted by the City of Wichita. The on-site engineer shall complete weekly reports on the status of erosion control measures. The contractor shall be required to comply with maintenance and/or replacement of erosion control measures as determined by the on-site engineer until project is accepted by City of Wichita. Maintenance and/or replacement of erosion control measures to be paid by L.S. bid item "Maintain Existing BMPs".

10. All areas disturbed during construction are to be seeded as follows:

Seed -- Rye grass; 5 lbs./1000 Sq. Ft.

All costs associated with seeding including mobilization, preparation of ground, seeding, fertilizing, mulching, etc. shall be included in the L.S. bid item "Seeding".

An additional bid item for "Seeding, Temporary" has been included and may be used at the discretion of the design engineer. Temporary seed shall be Annual Rye at 5 lbs./1000 Sq. Ft. unless otherwise noted and shall be planted when permanent seed or sod cannot be used due to seasonal limitations. If the "Seeding, Temporary" bid item is not used, 100% of the pay item will be deducted from the contract. All costs associated with temporary seeding including mobilization, preparation of ground, seeding, etc., shall be included in the L.S. bid item "Seeding, Temporary".

11. The developer for this project is Jay W. Russell, P.O. Box 75337, Wichita, KS 67272 (316)722-2417 jwrussell1105@cloud.com

# STREET PAVING FOR PRESCOTT to serve **SOUTHERN RIDGE 3RD ADD.** **PH. 5C & 6**

Prescott and Prescott Cir. from the south line of Lot 50, Block C, south to the south line of Lot 40, Block C. Prescott Ct. from the east line of Prescott, east to and including the cul-de-sac.

Prescott Cir. from the south line of Lot 40, Block C, south and east to and including the cul-de-sac.

## CITY OF WICHITA, KANSAS

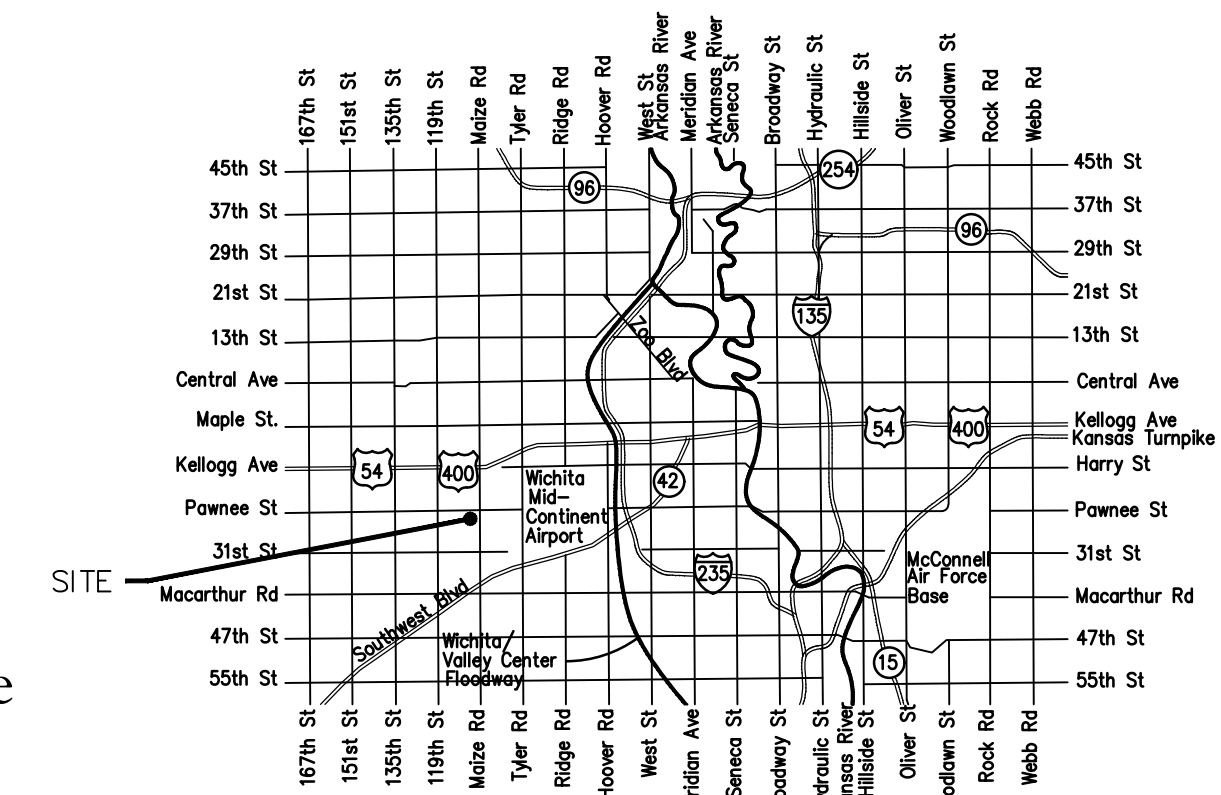
Gary Janzen, P.E. City Engineer

Ph. 5C Project Number  
472-85461

Ph. 5C O.C.A. Number  
766473

Ph. 6 Project Number  
472-84193

Ph. 6 O.C.A. Number  
766472



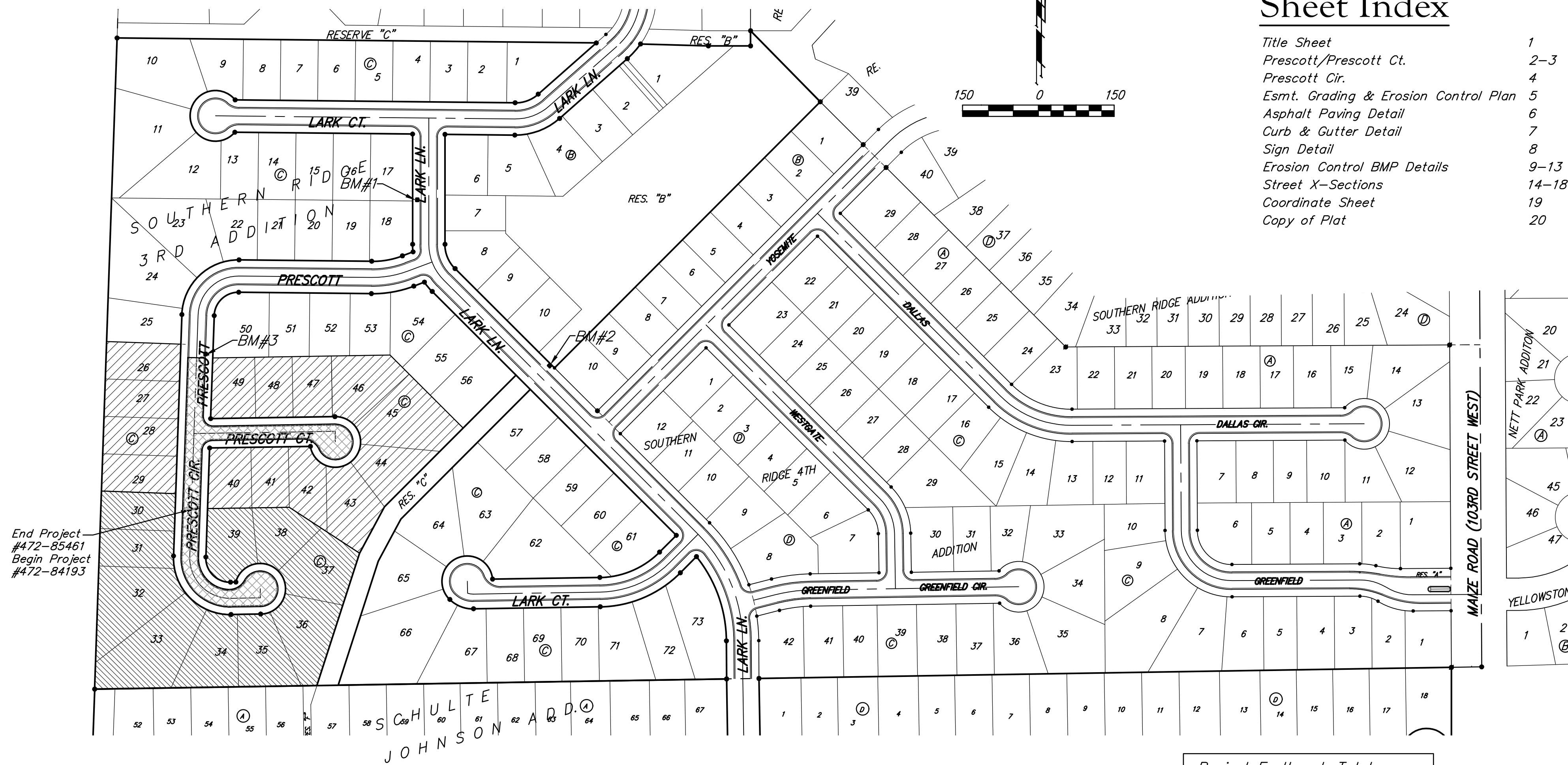
Vicinity Map

### Sheet Index

Title Sheet	1
Prescott/Prescott Ct.	2-3
Prescott Cir.	4
Esmt. Grading & Erosion Control Plan	5
Asphalt Paving Detail	6
Curb & Gutter Detail	7
Sign Detail	8
Erosion Control BMP Details	9-13
Street X-Sections	14-18
Coordinate Sheet	19
Copy of Plat	20

### Benchmarks

- BM #1: "□" cut on top of curb inlet adjacent to the south line of Lot 17, Block A, Southern Ridge 3rd Addition West Side of Lark Lane. Elev. = 146.45 (City Datum)
- BM #2: "+" cut on sidewalk adjacent to south line of curb inlet on east side of Lark Lane, north of Lot 10, Block B, Southern Ridge 4th Addition. Elev. = 146.93 (City Datum)
- BM #3: "□" cut on top of curb on the east side of Prescott near SW corner of Lot 50, Block C, Southern Ridge 3rd Addition. Elev. = 151.04 (City Datum)



End Project #472-85461  
Begin Project #472-84193

Benefit District Ph 5C

Benefit District Ph 6

Proposed Streets

Project Earthwork Totals  
(Unadjusted for shrink/swell)  
Excavation = 577 C.Y.  
Loose Fill = 506 C.Y.

Total Project Length  
862 L.F. = 0.16 Miles

October 2019



Baughman Company, P.A. 315 Ellis St. Wichita, KS 67211 P 316-262-7271 F 316-262-0143  
ENGINEERING | SURVEYING | PLANNING | LANDSCAPE ARCHITECTURE

