

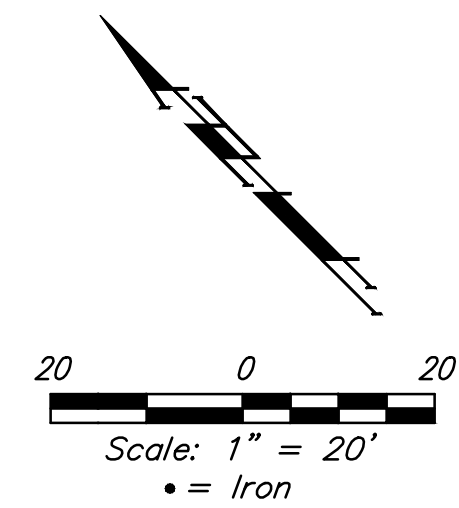
BENCHMARKS:

BM #1: "□" cut on top of curb inlet adjacent to the south line of Lot 17, Block A, Southern Ridge 3rd Addition West Side of Lark Lane
Elev. = 146.45 (City Datum)

BM #2: "+" cut on sidewalk adjacent to south line of curb inlet on east side of Lark Lane, north of Lot 10, Block B, Southern Ridge 4th Addition.
Elev. = 146.93 (City Datum)

BM #3: "□" cut on top of curb on the east side of Prescott near SW corner of Lot 50, Block C, Southern Ridge 3rd Addition
Elev. = 151.04 (City Datum)

Subdivision Bench Marks		
Street & Station	Location Description	Elevation
Prescott Cir. 6+61.74, 35.25' Lt.	Adjacent to Fire Hydrant near common front lot corner of Lots 38 & 39, Block C, Southern Ridge 3rd Addition.	

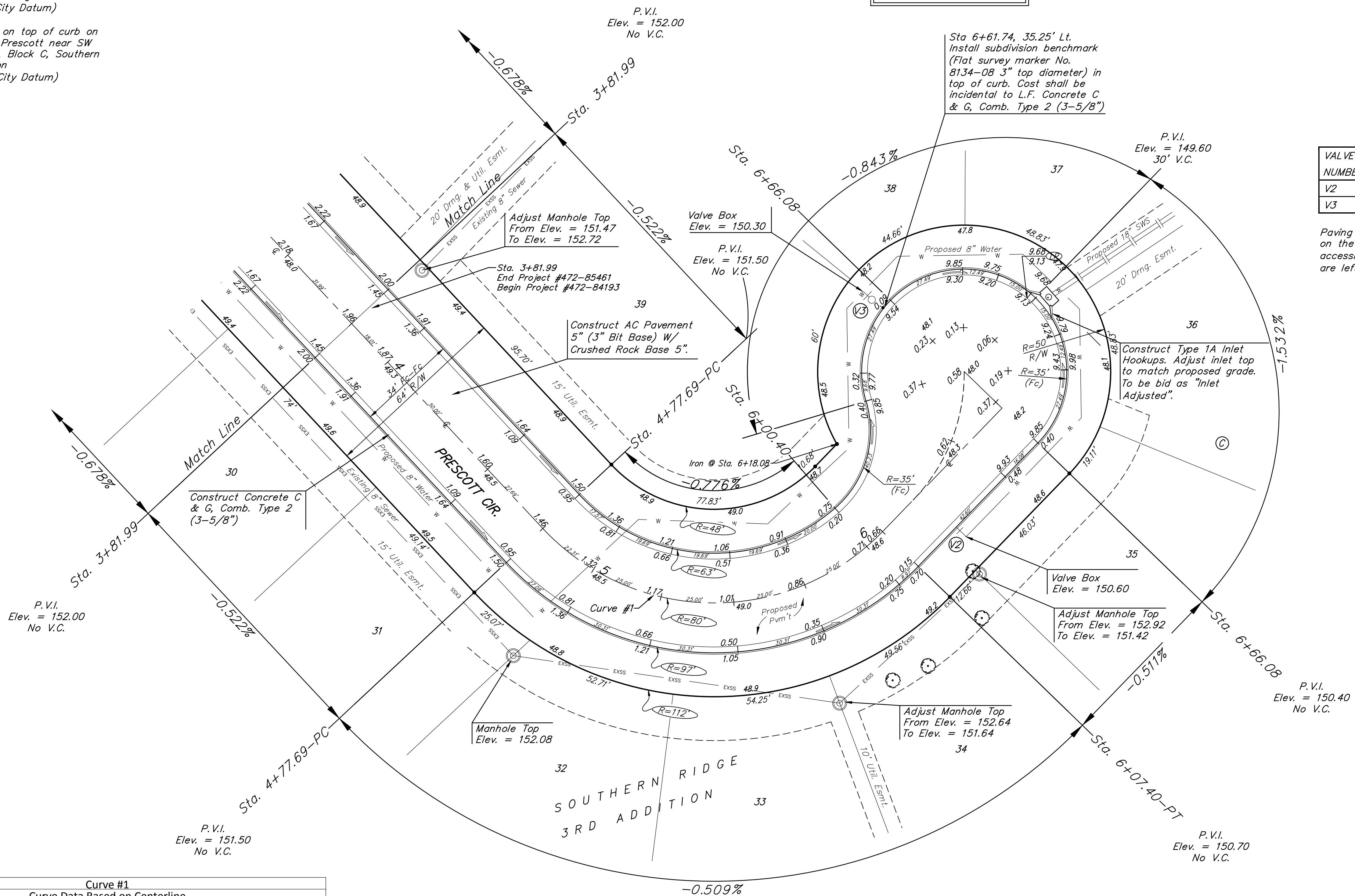


Baseline = CL Prescott Cir.

WATER VALVE LOCATION TABLE

VALVE NUMBER	STREET	BASELINE STATION	OFFSET DISTANCE	OFFSET DIRECTION
V2	Prescott Cir.	6+26.06	21.73'	Rt.
V3	Prescott Cir.	6+17.74	61.73'	Lt.

Paving contractor will be responsible to operate all water valves on the project, in the presence of the inspector, to ensure accessibility to the valves, and that all valves (except blowoffs) are left in the "ON" position when the project is completed.



Curve #1					
Curve Data Based on Centerline					
Rad. = 80' Delta = 92°53'53" Tangent = 84.15'					
Arc = 122.71' L.C. = 115.96' Def./Ft. = 22.71161 Min.					
Station	Arc	Face Chord Lengths		Defl.	Total Defl.
		8' Left	8' Right		
4+77.69				0°00'00"	0°00'00"
5+00.00	22.31'	17.62'	29.37'	8°26'42"	8°26'42"
5+25.00	25.00'	19.73'	32.88'	9°27'47"	17°54'29"
5+50.00	25.00'	19.73'	32.88'	9°27'48"	27°22'17"
5+75.00	25.00'	19.73'	32.88'	9°27'47"	36°50'04"
6+00.40	25.40'	20.04'	33.40'	9°36'53"	46°26'57"

NOTE: ROLL TYPE CURB & GUTTER (TYPE 2) TO BE CONSTRUCTED ON THE PAVEMENT SHOWN ON THIS SHEET. TOP OF CURB ELEVATIONS ARE GIVEN FOR FULL HEIGHT CURB (TYPE 4).

SOUTHERN RIDGE 3RD ADD. PH. 5C & 6
PRESCOTT CIR.
 STREET IMPROVEMENTS
 Baughman Company, P.A.
 ENGINEERING, PLANNING, LANDSCAPE ARCHITECTURE
 1100 N. 10TH ST., SUITE 200, FARGO, ND 58102
 (701) 785-1100
 www.baughman.com
 Date: 10/19/19