

**BENCHMARKS:**

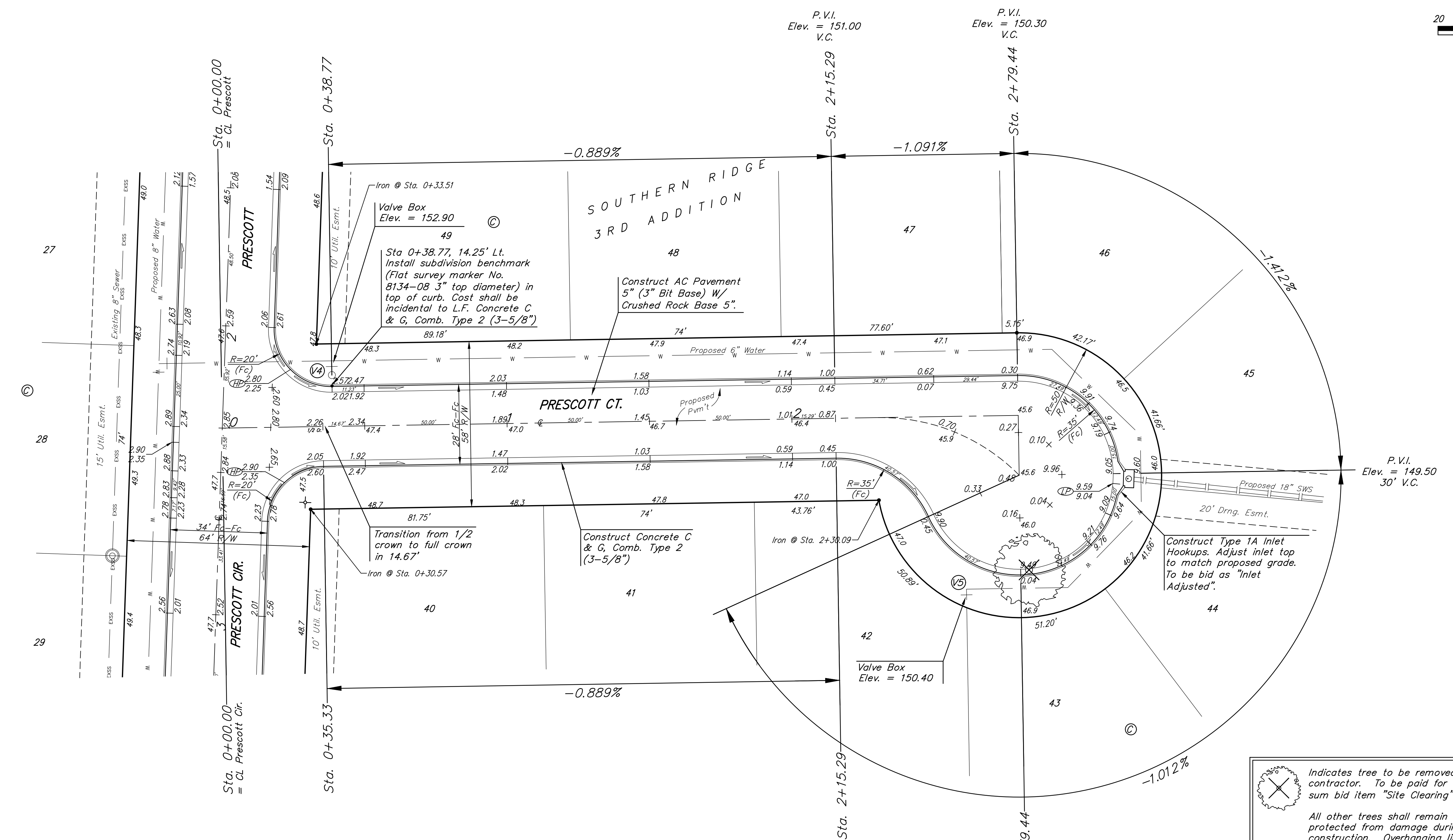
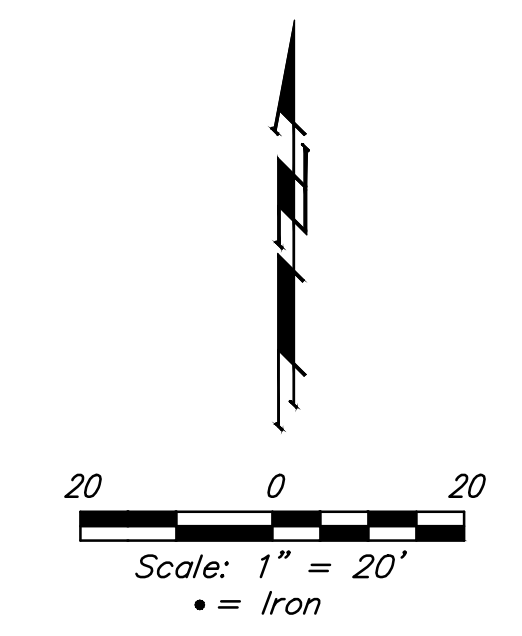
BM #1: "□" cut on top of curb inlet adjacent to the south line of Lot 17, Block A, Southern Ridge 3rd Addition West Side of Lark Lane  
Elev. = 146.45 (City Datum)

BM #2: "+" cut on sidewalk adjacent to south line of curb inlet on east side of Lark Lane, north of Lot 10, Block B, Southern Ridge 4th Addition.  
Elev. = 146.93 (City Datum)

BM #3: "□" cut on top of curb on the east side of Prescott near SW corner of Lot 50, Block C, Southern Ridge 3rd Addition  
Elev. = 151.04 (City Datum)

All construction on this sheet  
Project #472-65461

Baseline = CL Prescott Ct.



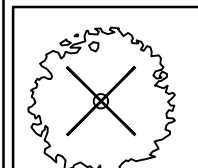
Subdivision Bench Marks

Street & Station	Location Description	Elevation
Prescott Ct. 0+38.77, 14.25' Lt.	Adjacent to Fire Hydrant at E. End of NE Curb Return Of Prescott & Prescott Ct.	

WATER VALVE LOCATION TABLE

VALVE NUMBER	STREET	BASELINE STATION	OFFSET DISTANCE	OFFSET DIRECTION
V4	Prescott Ct.	0+38.77	23'	Lt.
V5	Prescott Ct.	2+60.32	60.73'	Rt.

Paving contractor will be responsible to operate all water valves on the project, in the presence of the inspector, to ensure accessibility to the valves, and that all valves (except blowoffs) are left in the "ON" position when the project is completed.

 Indicates tree to be removed by contractor. To be paid for as lump sum bid item "Site Clearing"

All other trees shall remain and be protected from damage during construction. Overhanging limbs shall be trimmed by the Contractor only as necessary for construction and with approval of the Engineer. Cost of tree trimming to be included in bid item "Site Clearing"

NOTE: ROLL TYPE CURB & GUTTER (TYPE 2) TO BE CONSTRUCTED ON THE PAVEMENT SHOWN ON THIS SHEET. TOP OF CURB ELEVATIONS ARE GIVEN FOR FULL HEIGHT CURB (TYPE 4).

SOUTHERN RIDGE 3RD ADD. PH. 5C & 6  
**PRESCOTT CT.**  
 STREET IMPROVEMENTS  
 Baughman Company, P.A.  
 ENGINEERING, ARCHITECTURE, PLANNING, LANDSCAPE ARCHITECTURE  
 11500 W. 48th St., Suite 200, Overland Park, KS 66204  
 Phone: 913.241.1100 Fax: 913.241.1101  
 www.baughman.com  
 Date: 10/19/19