

BENCHMARK:
 City of Wichita Benchmark Disk at South End of Hubguard on the SW Cor. of R.C.B.C., West Side of Rock Road, 706' North-northwest of the Northwest Corner of Lot 44, Block A, Rocky Ford Addition.
 Elev. = 1368.14 NAVD88

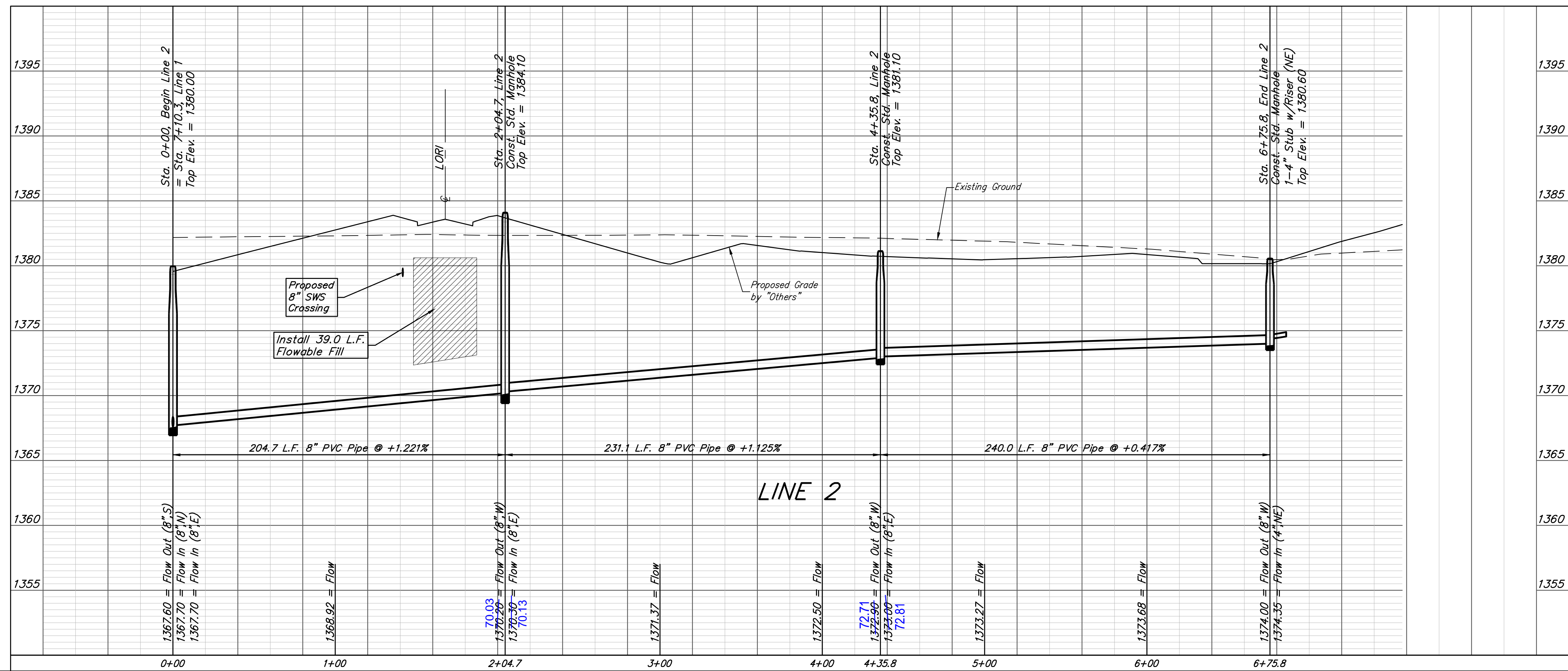
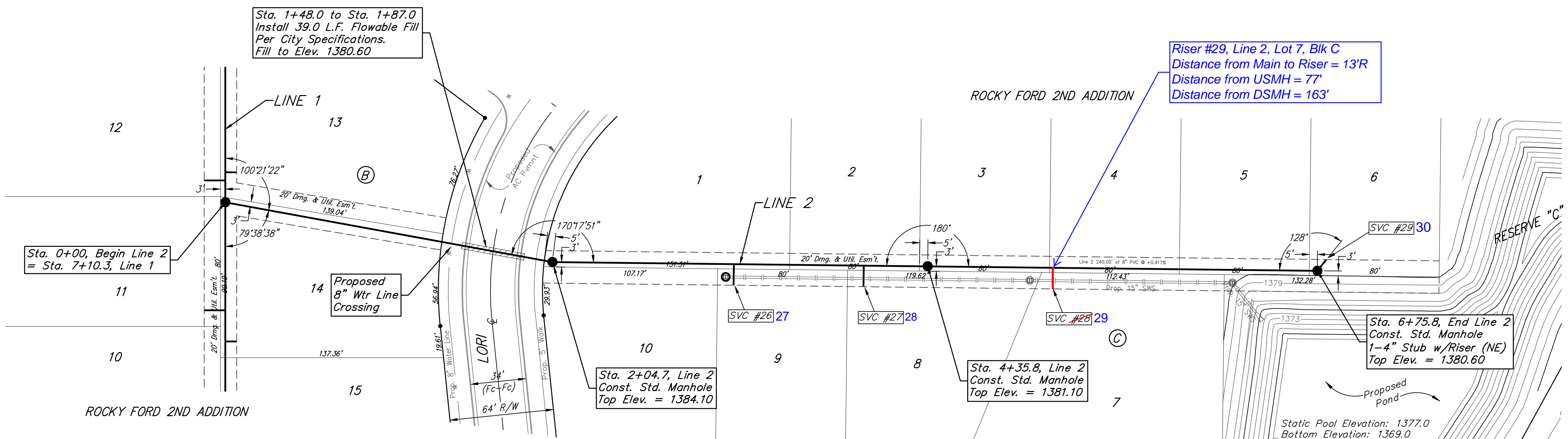
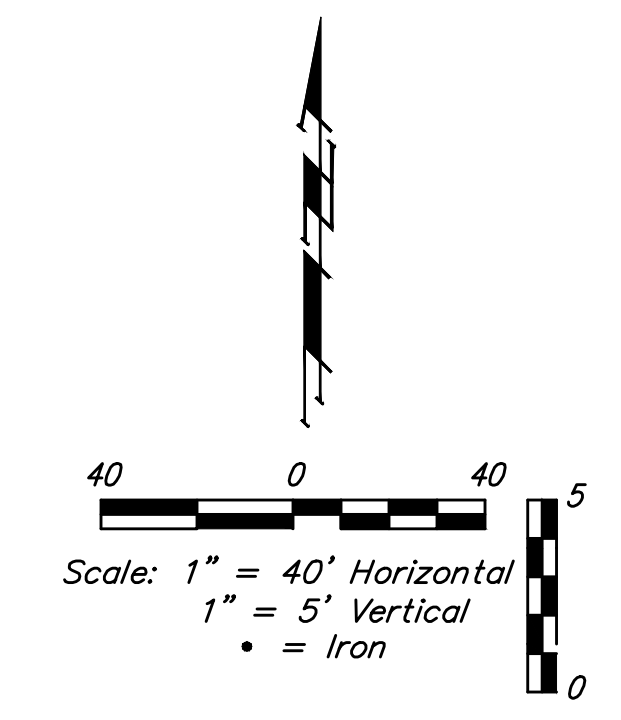
"□" on Top of Curb by Fire Hydrant. South of Concrete Drive at 2800 S. Rock Road.
 Elev. = 1379.84 NAVD88

SEWER SERVICE TABLE

NUMBER	TYPE	LOCATION			FOR INFORMATION ONLY	
		LOT	BLOCK	LINE	STATION/DIRECTION	APPROXIMATE LENGTH 4" PIPE
26-27	8" X 4" Tee	9	C	2	3+16.0/Rt.	4.7' 13'
27-28	8" X 4" Tee	8	C	2	3+96.0/Rt.	4.6' 13'
28-29	8" X 4" Tee	7	C	2	5+13.0/Rt.	2.9' 13'
29-30	8" X 4" Tee	6	C	2	6+75.8/Lt.	3.4' 10'

NOTE: Vertical Riser Pipe shall be extended to 2' minimum above ground water elevation and 4' maximum below proposed ground elevation.

Note: Partial Release
 Released for tap purposes only.
 Contractor: Apex Construction
 J. Wagner - City of Wichita, Field Project Engineer
 Release Date: 11/5/2018
 partial pdf: 11/5/2018 apr



		Rocky Ford 2nd Addition	
		LINE 2	
Sanitary Sewer Improvements		Baughman Company, P.A. 315 Ellis St. Wichita, KS 67211 P 316-262-7271 F 316-262-0149 ENGINEERING SURVEYING PLANNING LANDSCAPE ARCHITECTURE	
PROJECT NUMBER 468-85284	DESIGN DMV	DRAWN JAK	DATE 3/06/18
REVISIONS:	APPROVED	SCALE Noted	SHEET
		4 OF 17	