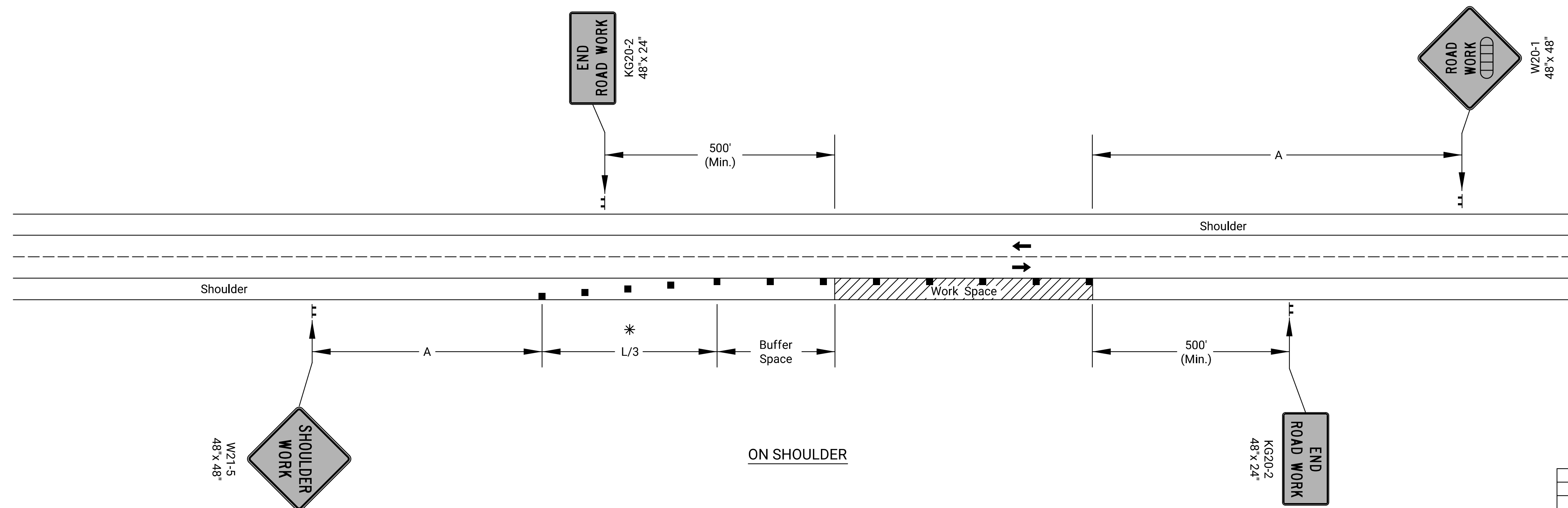


Notes:

No traffic control is required if the Work Space is located outside of the clear zone.

For operations of 60 minutes or less, all signs and channelizing devices may be eliminated if a vehicle with high-intensity rotating, flashing, oscillating, or strobe lights is used.



* Omit taper if paved shoulder is less than 8' wide.

- Channelizing Device
- Ahead, 1500 ft, or 1 Mile

3					
2					
1					
NO.	DATE	REVISIONS	BY	APP'D	
KANSAS DEPARTMENT OF TRANSPORTATION					
TRAFFIC CONTROL SHOULDER WORK UNDIVIDED ROADWAY					
TE720					
FHWA APPROVAL	06/01/15	APP'D	Kristina Erickson		
DESIGNED	L.E.R.	DETAILED	R.W.B.	QUANTITIES	TRACED
DESIGN CK.		DETAIL CK.	QUAN. CK.		TRACE CK.