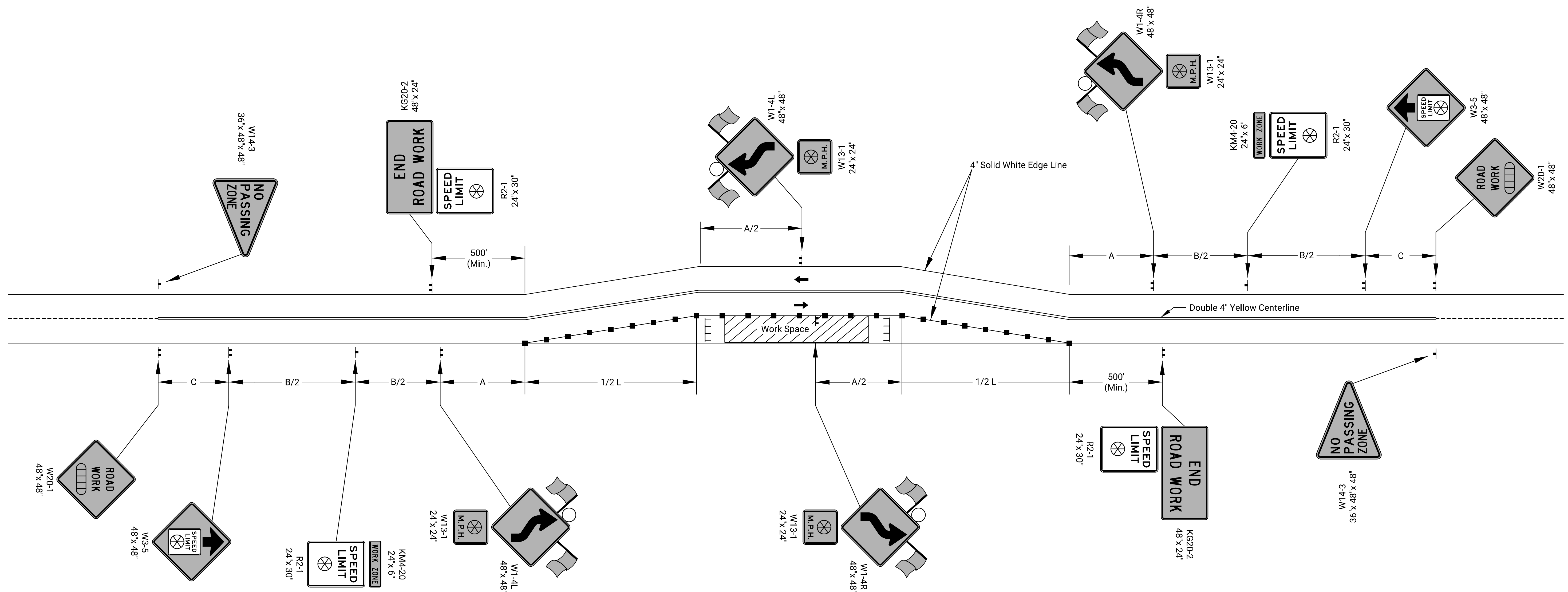


One W24-1 should be used per approach where the tangent distance between two reverse curves is less than 600 ft. If used, use in place of the first W1-4 and eliminate the second.



Drawn By : Road
 File : te724.dgn
 Plotted : 23-JUL-2019 11:23

- Channelizing Device
- ⊥ Type 3 Barricades
- ▨ Ahead, 1500 ft, or 1 Mile
- ⊗ Speed to be Determined by the Engineer
- Type "A" Low Intensity Warning Light

KANSAS DEPARTMENT OF TRANSPORTATION				
TRAFFIC CONTROL LANE SHIFT				
TE724				
NO.	DATE	REVISIONS	BY	APPD
3				
2				
1	03/13/18	W24-1 usage changed to Should	R.W.B.	E.G.K.
DESIGNED	R.W.B.	DETAILED	R.W.B.	QUANTITIES
DESIGN CK.	DETAIL CK.	QUAN. CK.	TRACE	CK.