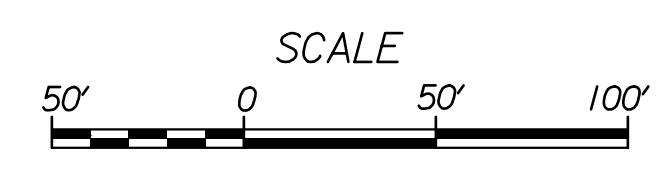
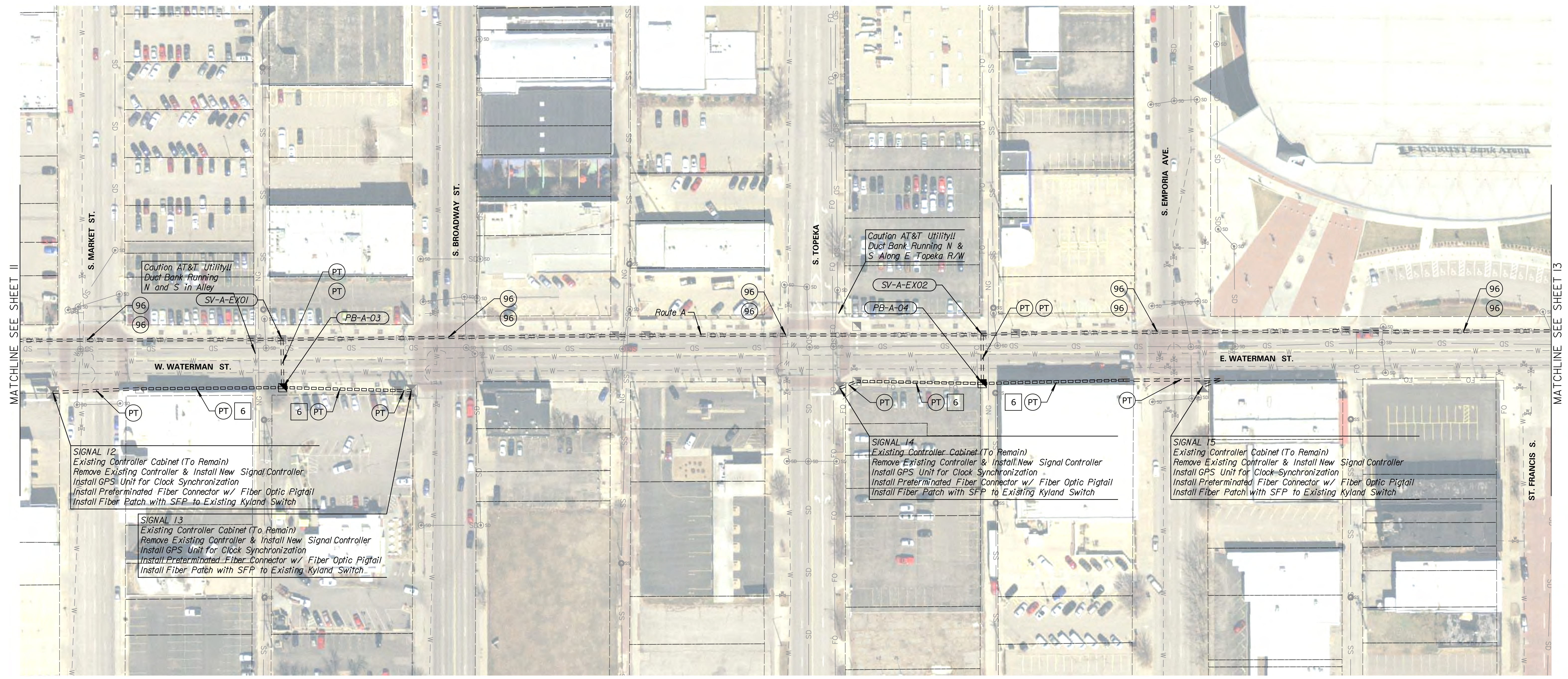


REFERENCES NOTED	DATE
REFERENCES CHECKED	



STATE	PROJECT NO.	YEAR	SHEET NO.	TOTAL SHEETS
KANSAS	87 N-0684-01	2019	12	109



Caution AT&T Utility!!
Duct Bank Running N and S in Alley

Caution AT&T Utility!!
Duct Bank Running N & S Along E Topeka R/W

SIGNAL 12
Existing Controller Cabinet (To Remain)
Remove Existing Controller & Install New Signal Controller
Install GPS Unit for Clock Synchronization
Install Preterminated Fiber Connector w/ Fiber Optic Pigtail
Install Fiber Patch with SFP to Existing Kyland Switch

SIGNAL 13
Existing Controller Cabinet (To Remain)
Remove Existing Controller & Install New Signal Controller
Install GPS Unit for Clock Synchronization
Install Preterminated Fiber Connector w/ Fiber Optic Pigtail
Install Fiber Patch with SFP to Existing Kyland Switch

SIGNAL 14
Existing Controller Cabinet (To Remain)
Remove Existing Controller & Install New Signal Controller
Install GPS Unit for Clock Synchronization
Install Preterminated Fiber Connector w/ Fiber Optic Pigtail
Install Fiber Patch with SFP to Existing Kyland Switch

SIGNAL 15
Existing Controller Cabinet (To Remain)
Remove Existing Controller & Install New Signal Controller
Install GPS Unit for Clock Synchronization
Install Preterminated Fiber Connector w/ Fiber Optic Pigtail
Install Fiber Patch with SFP to Existing Kyland Switch

NOTES:
DEVICE & CONDUIT SYMBOLOGY ON PLAN SHEET IS NOT SHOWN TO SCALE FOR PLAN CLARITY. DO NOT SCALE LOCATIONS FROM PLAN SHEET. EXISTING UTILITIES & STRUCTURES ON PLAN SHEET MAY DIFFER FROM FIELD CONDITIONS & SHALL BE VERIFIED PRIOR TO ANY EXCAVATION OR CONSTRUCTION ACTIVITIES.

FOR FIBER SCHEMATIC & SPLICING DETAILS, SEE SHEETS 52-64

KANSAS DEPARTMENT OF TRANSPORTATION
FIBER OPTIC CONDUIT
ROUTE A

Drawn By : Road
Plotted : 7/23/2019
File : c:\transystems\pw_local\transyscorp-pw\ccbankid0643930\C-FBR-M0A-105.dgn