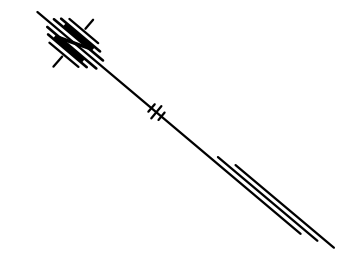
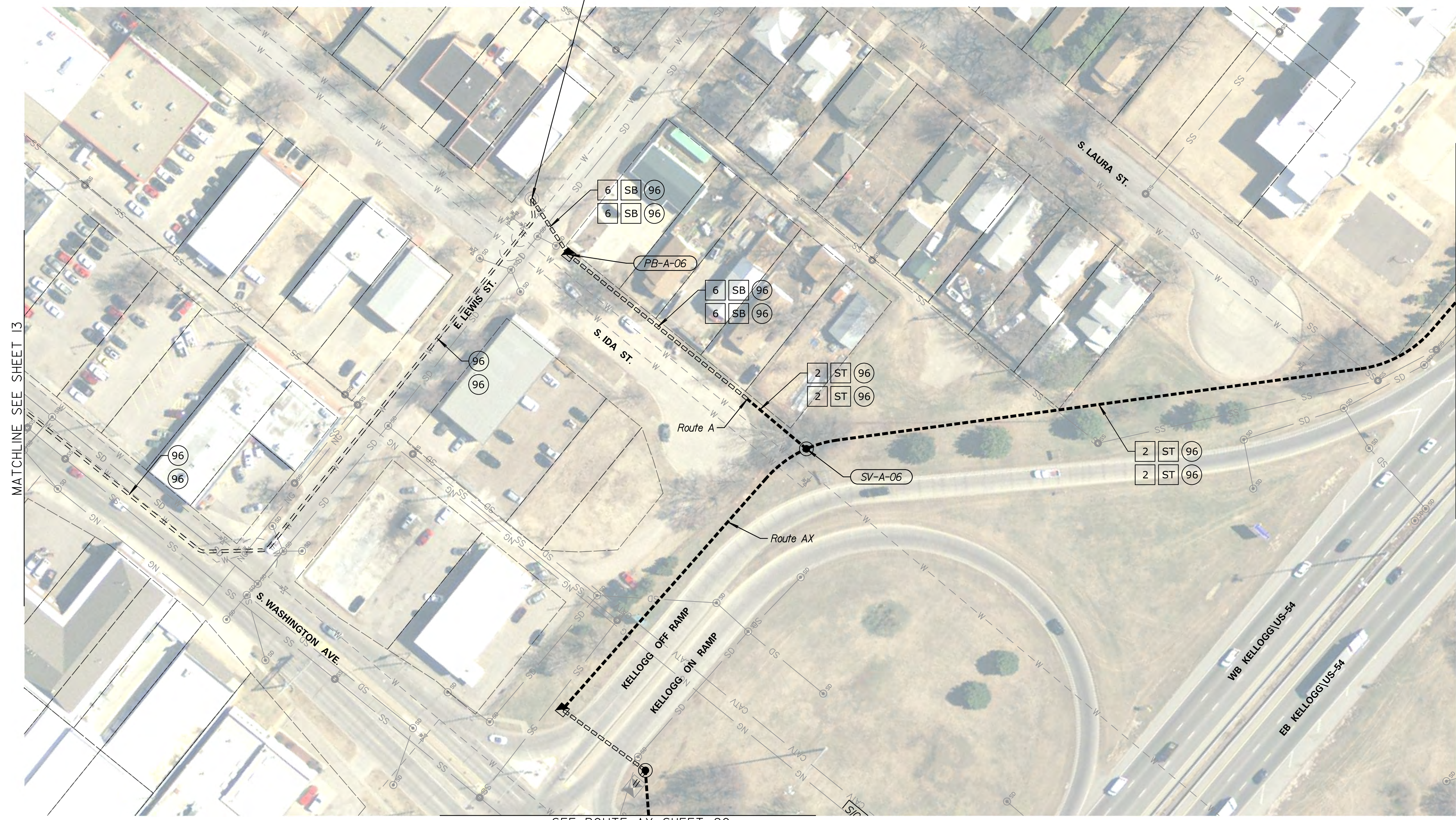




STATE	PROJECT NO.	YEAR	SHEET NO.	TOTAL SHEETS
KANSAS	87 N-0684-01	2019	14	109



Existing Splice Vault (To Remain)
Connect Proposed Conduit to
Splice Vault.



SEE ROUTE AX SHEET 20

DATE	BY

Drawn By : Road
 File : c:\transystems\pw_local\transyscorp-pw\cbbankaid0643930\C-FBR-M0A-107.dgn
 Plotted : 7/23/2019

NOTES:
 DEVICE & CONDUIT SYMBOLOGY ON PLAN SHEET IS NOT SHOWN TO SCALE FOR PLAN CLARITY. DO NOT SCALE LOCATIONS FROM PLAN SHEET. EXISTING UTILITIES & STRUCTURES ON PLAN SHEET MAY DIFFER FROM FIELD CONDITIONS & SHALL BE VERIFIED PRIOR TO ANY EXCAVATION OR CONSTRUCTION ACTIVITIES.
 FOR FIBER SCHEMATIC & SPLICING DETAILS, SEE SHEETS 52-64

KANSAS DEPARTMENT OF TRANSPORTATION
 FIBER OPTIC CONDUIT
 ROUTE A