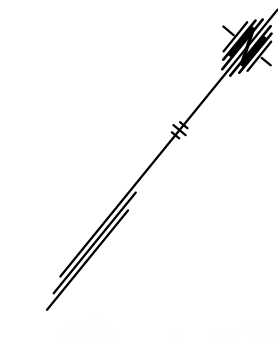


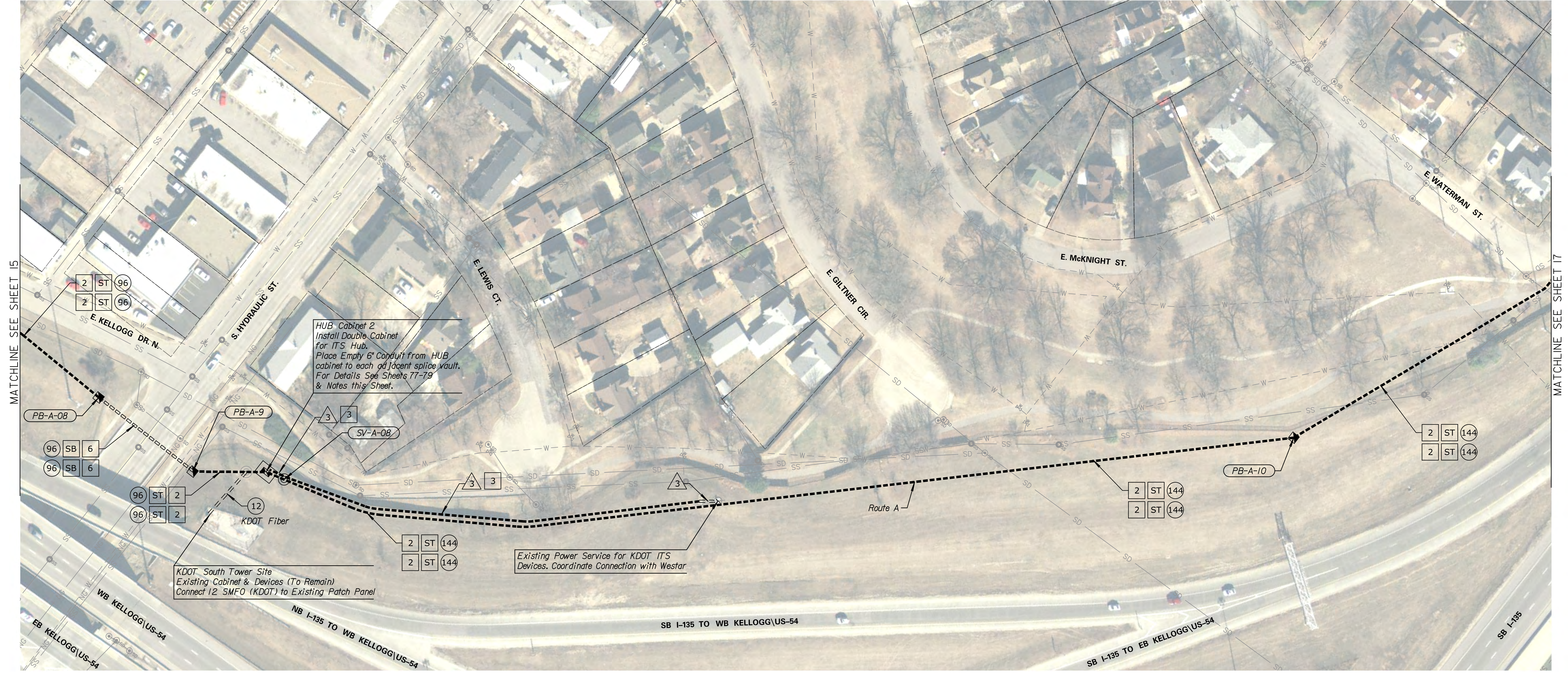


STATE	PROJECT NO.	YEAR	SHEET NO.	TOTAL SHEETS
KANSAS	87 N-0684-01	2019	16	109



DATE	BY

Drawn By : Road  
 File : c:\transystems\pw\_local\transyscorp-pw\ccbankid0643930\C-FBR-M0A-109.dgn



HUB Cabinet 2  
 Install Double Cabinet  
 for ITS Hub.  
 Place Empty 6" Conduit from HUB  
 cabinet to each adjacent splice vault.  
 For Details See Sheets 77-79  
 & Notes this Sheet.

KDOT South Tower Site  
 Existing Cabinet & Devices (To Remain)  
 Connect 12 SMFO (KDOT) to Existing Patch Panel

Existing Power Service for KDOT ITS  
 Devices. Coordinate Connection with Westar

NOTES:  
 DEVICE & CONDUIT SYMBOLY ON PLAN SHEET IS NOT SHOWN  
 TO SCALE FOR PLAN CLARITY. DO NOT SCALE LOCATIONS FROM  
 PLAN SHEET. EXISTING UTILITIES & STRUCTURES ON PLAN  
 SHEET MAY DIFFER FROM FIELD CONDITIONS & SHALL BE VERIFIED  
 PRIOR TO ANY EXCAVATION OR CONSTRUCTION ACTIVITIES.

FOR FIBER SCHEMATIC & SPLICING DETAILS, SEE SHEETS 52-64

ITS HUB CABINET 1 SHALL BE ALUMINUM.

AN EMPTY 6" CONDUIT SHALL BE PLACED BETWEEN HUB  
 CABINET AND ADJACENT SPLICE VAULTS. CONDUIT MAY  
 BE EITHER PVC OR HDPE, BUT SHALL BE PLUGGED AT  
 EITHER END & EQUIPPED WITH A PULL STRING.  
 CONDUIT IS SUBSIDIARY TO THE HUB CABINET.

KANSAS DEPARTMENT OF TRANSPORTATION  
 FIBER OPTIC CONDUIT  
 ROUTE A