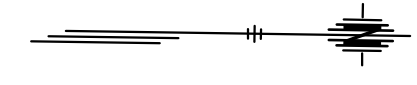


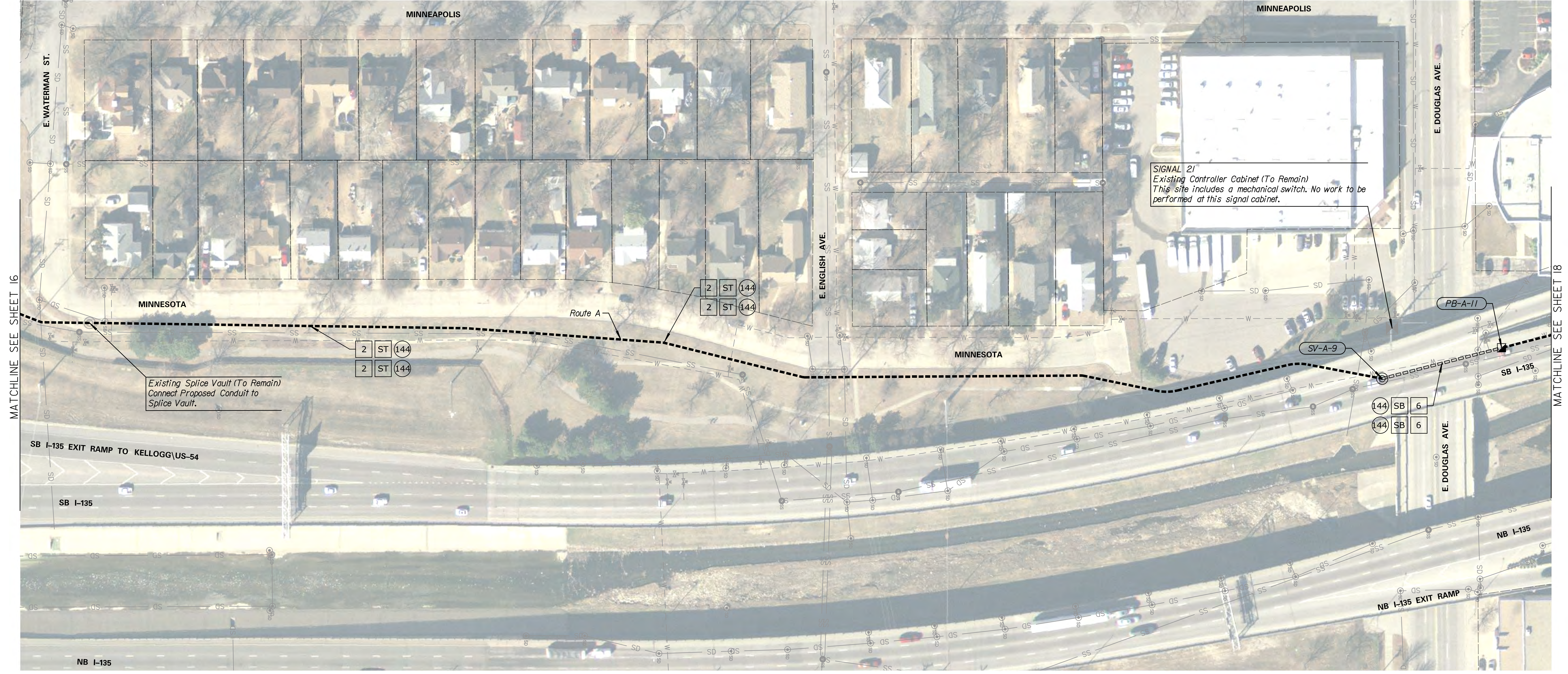


STATE	PROJECT NO.	YEAR	SHEET NO.	TOTAL SHEETS
KANSAS	87 N-0684-01	2019	17	109



DATE	BY

Drawn By : Road
 File : c:\transystems\pw_local\transcorp-pw\ccbankid0643930\C-FBR-M0A-110.dgn



Existing Splice Vault (To Remain)
 Connect Proposed Conduit to
 Splice Vault.

SIGNAL 21
 Existing Controller Cabinet (To Remain)
 This site includes a mechanical switch. No work to be
 performed at this signal cabinet.

NOTES:
 DEVICE & CONDUIT SYMBOLY ON PLAN SHEET IS NOT SHOWN
 TO SCALE FOR PLAN CLARITY. DO NOT SCALE LOCATIONS FROM
 PLAN SHEET. EXISTING UTILITIES & STRUCTURES ON PLAN
 SHEET MAY DIFFER FROM FIELD CONDITIONS & SHALL BE VERIFIED
 PRIOR TO ANY EXCAVATION OR CONSTRUCTION ACTIVITIES.

FOR FIBER SCHEMATIC & SPLICING DETAILS, SEE SHEETS 52-64

KANSAS DEPARTMENT OF TRANSPORTATION
 FIBER OPTIC CONDUIT
 ROUTE A