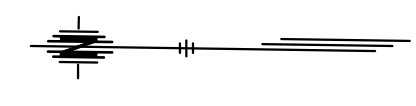




STATE	PROJECT NO.	YEAR	SHEET NO.	TOTAL SHEETS
KANSAS	87 N-0684-01	2019	22	109



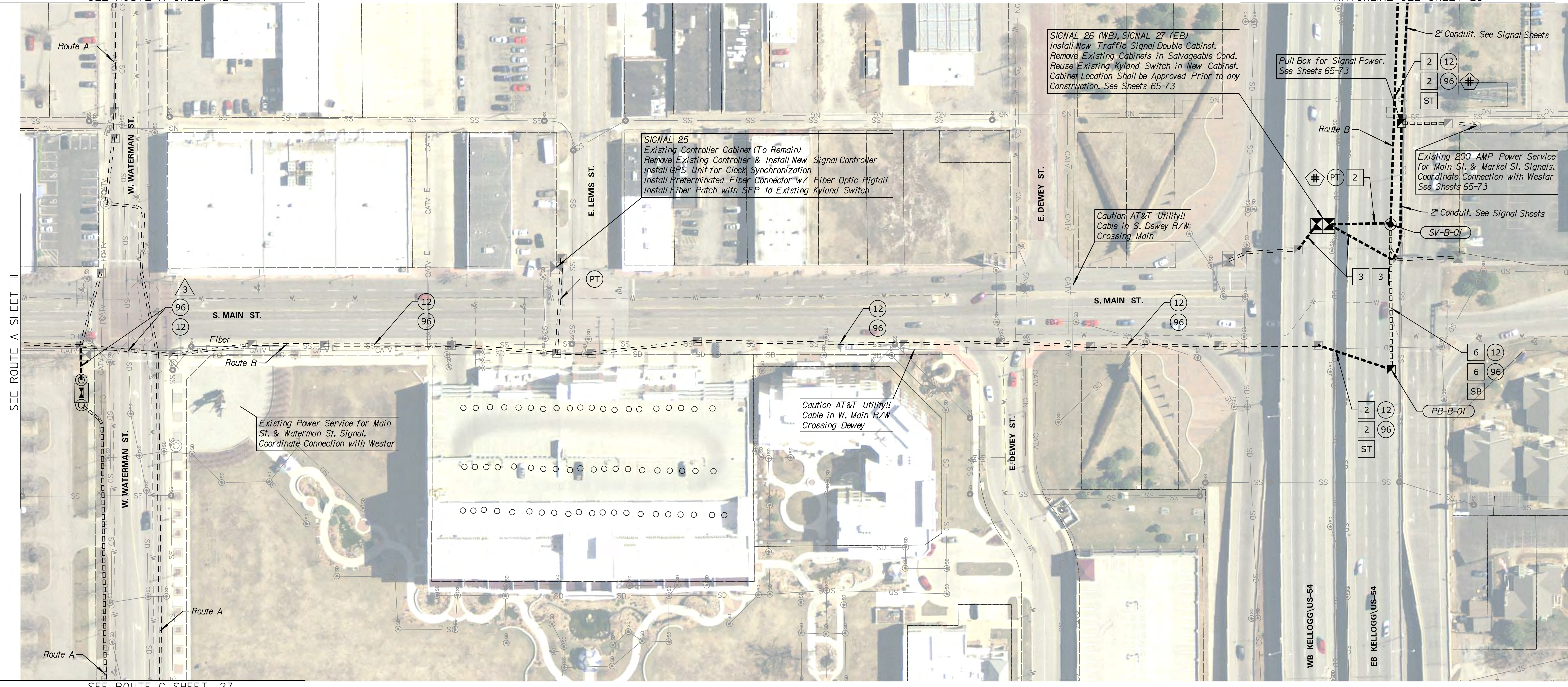
SEE ROUTE A SHEET 12

MATCHLINE SEE SHEET 23

DATE	BY

REFERENCES NOTED	REFERENCES CHECKED

Drawn By : Road  
 File : c:\transystems\pw\_local\transyscorp-pw1\ccbanka\d0643930\C-FBR-MOB-101.dgn  
 Plotted : 7/23/2019



SEE ROUTE A SHEET II

SEE ROUTE C SHEET 27

CAUTION!!! EXISTING CITY LIGHTING AND IRRIGATION LOCATED IN RIGHT OF WAY ADJACENT TO US-54 DOWNTOWN FLYOVER BRIDGE. CONTRACTOR SHALL VERIFY LOCATIONS PRIOR TO CONSTRUCTION. SEE NOTE 5 OF GENERAL NOTES FOR ADDITIONAL DETAILS.

NOTES:  
 DEVICE & CONDUIT SYMBOLY ON PLAN SHEET IS NOT SHOWN TO SCALE FOR PLAN CLARITY. DO NOT SCALE LOCATIONS FROM PLAN SHEET. EXISTING UTILITIES & STRUCTURES ON PLAN SHEET MAY DIFFER FROM FIELD CONDITIONS & SHALL BE VERIFIED PRIOR TO ANY EXCAVATION OR CONSTRUCTION ACTIVITIES.

FOR FIBER SCHEMATIC & SPLICING DETAILS, SEE SHEETS 52-64  
 FOR KELLOGG DR. INTERSECTION DETAILS, SEE SHEETS 65-73

KANSAS DEPARTMENT OF TRANSPORTATION  
 FIBER OPTIC CONDUIT  
 ROUTE B