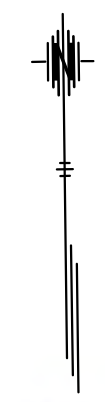


SCALE
50' 0 50' 100'

STATE	PROJECT NO.	YEAR	SHEET NO.	TOTAL SHEETS
KANSAS	87 N-0684-01	2019	23	109

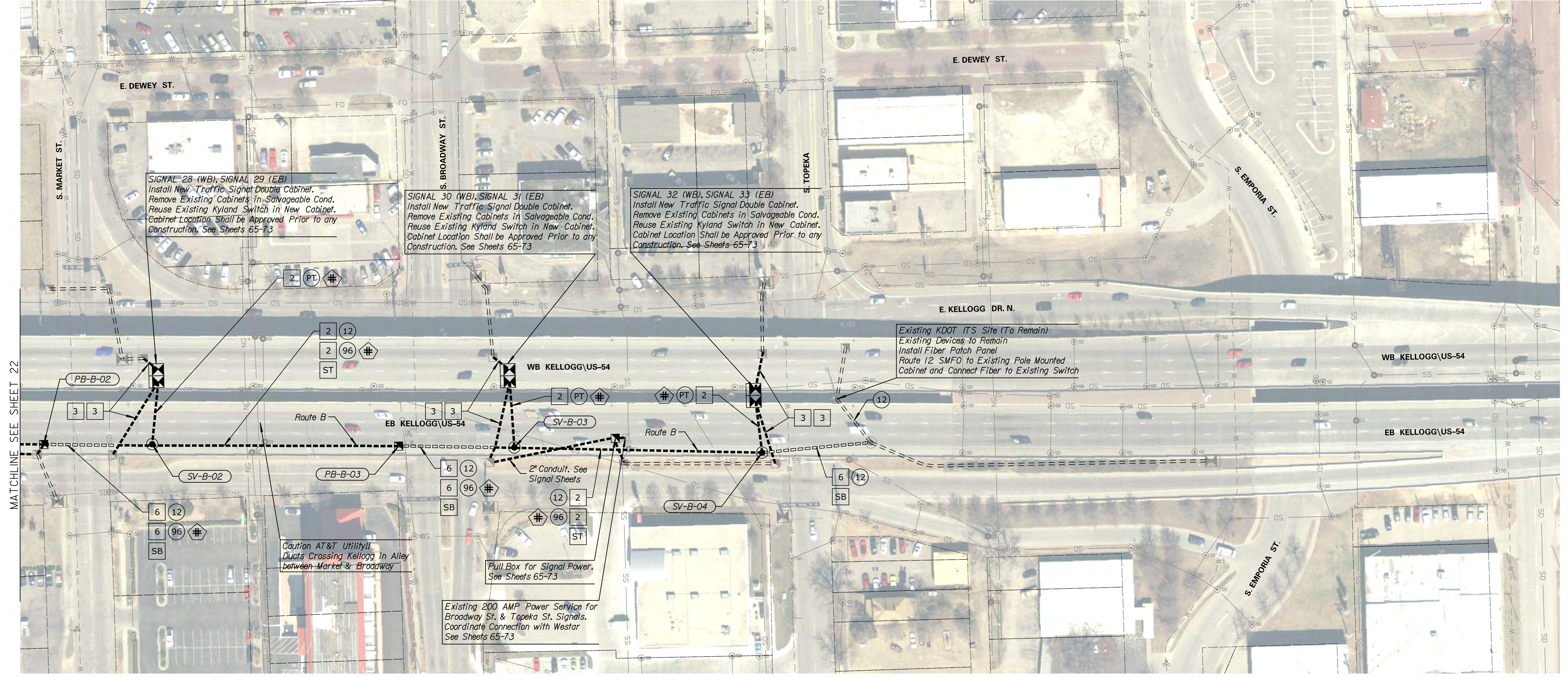


DATE

BY

REFERENCES NOTED

REFERENCES CHECKED



CAUTION!!! EXISTING CITY LIGHTING AND IRRIGATION LOCATED IN RIGHT OF WAY ADJACENT TO US-54 DOWNTOWN FLYOVER BRIDGE. CONTRACTOR SHALL VERIFY LOCATIONS PRIOR TO CONSTRUCTION. SEE NOTE 5 OF GENERAL NOTES FOR ADDITIONAL DETAILS.

NOTES:
DEVICE & CONDUIT SYMBOLY ON PLAN SHEET IS NOT SHOWN TO SCALE FOR PLAN CLARITY. DO NOT SCALE LOCATIONS FROM PLAN SHEET. EXISTING UTILITIES & STRUCTURES ON PLAN SHEET MAY DIFFER FROM FIELD CONDITIONS & SHALL BE VERIFIED PRIOR TO ANY EXCAVATION OR CONSTRUCTION ACTIVITIES.

FOR FIBER SCHEMATIC & SPLICING DETAILS, SEE SHEETS 52-64

FOR KELLOGG DR. INTERSECTION DETAILS, SEE SHEETS 65-73

KANSAS DEPARTMENT OF TRANSPORTATION
FIBER OPTIC CONDUIT
ROUTE B

Drawn By : Road
Plotted : 7/23/2019
File : c:\transystems\pw_local\transyscorp-pw\ccbankid0643930\C-FBR-MOB-102.dgn