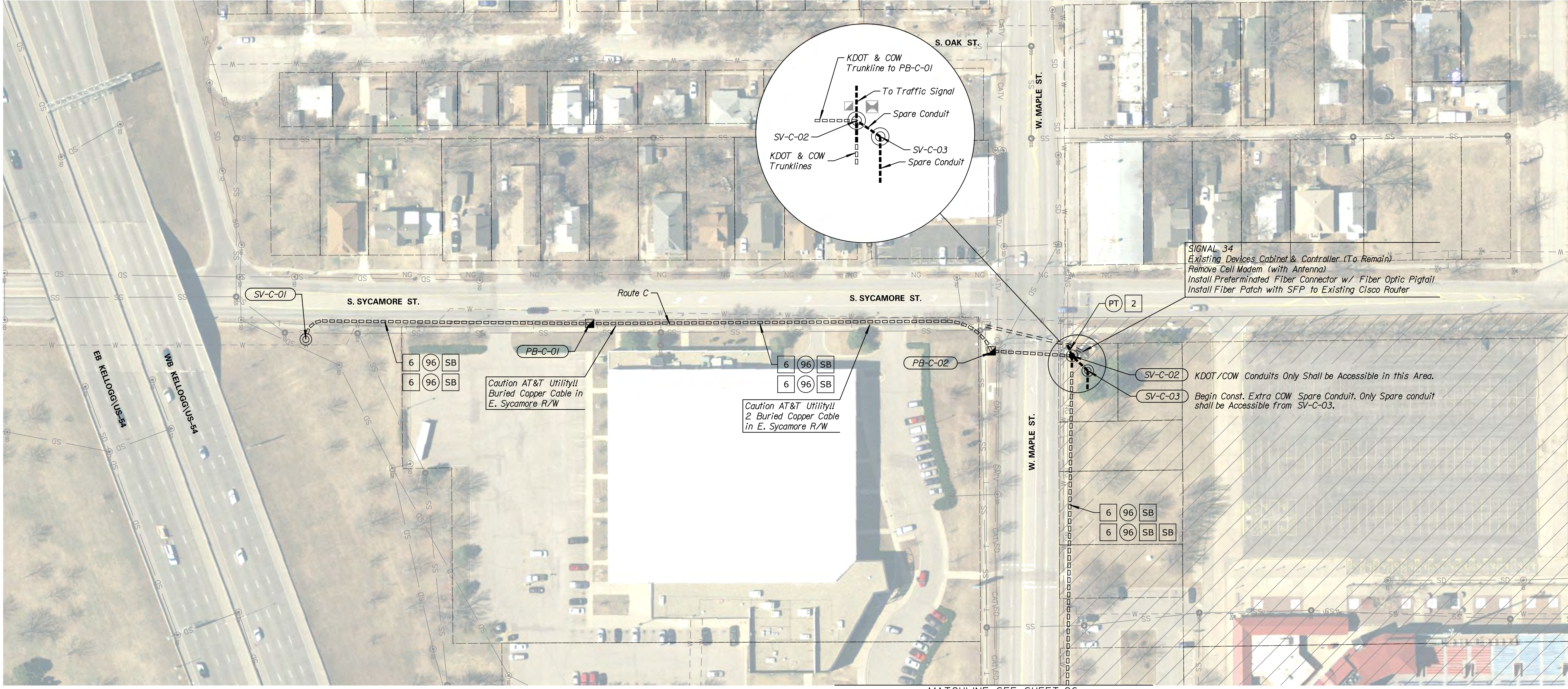




STATE	PROJECT NO.	YEAR	SHEET NO.	TOTAL SHEETS
KANSAS	87 N-0684-01	2019	25	109

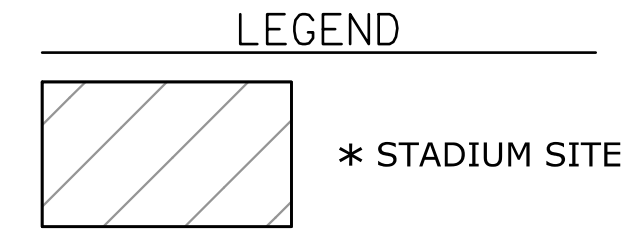
DATE	BY



**SIGNAL 34**  
 Existing Devices Cabinet & Controller (To Remain)  
 Remove Cell Modem (with Antenna)  
 Install Preterminated Fiber Connector w/ Fiber Optic Pigtail  
 Install Fiber Patch with SFP to Existing Cisco Router

SV-C-02 KDOT/COW Conduits Only Shall be Accessible in this Area.  
 SV-C-03 Begin Const. Extra COW Spare Conduit. Only Spare conduit shall be Accessible from SV-C-03.

Caution AT&T Utility!!  
 Buried Copper Cable in E. Sycamore R/W



\* NOTES:  
 STADIUM SITE UNDER CONST. BY OTHERS. CONTRACTOR SHALL COORDINATE WITH STADIUM CONTRACTOR FOR SITE ACCESS. UTILITIES IN THIS AREA MAY BE RELOCATED. CONTRACTOR SHALL CONDUCT SPECIAL UTILITY COORDINATION WITH UTILITIES REGARDING LOCATIONS AND RELOCATIONS OF UTILITIES. ALL WORK ASSOCIATED WITH THE COORDINATION OF THE STADIUM SITE SHALL BE SUSIDIARY TO ITEMS OF THE CONTRACT.

NOTES:  
 DEVICE & CONDUIT SYMBOLOGY ON PLAN SHEET IS NOT SHOWN TO SCALE FOR PLAN CLARITY. DO NOT SCALE LOCATIONS FROM PLAN SHEET. EXISTING UTILITIES & STRUCTURES ON PLAN SHEET MAY DIFFER FROM FIELD CONDITIONS & SHALL BE VERIFIED PRIOR TO ANY EXCAVATION OR CONSTRUCTION ACTIVITIES.  
 FOR FIBER SCHEMATIC & SPLICING DETAILS, SEE SHEETS 52-64

KANSAS DEPARTMENT OF TRANSPORTATION  
 FIBER OPTIC CONDUIT  
 ROUTE C

Drawn By : Road  
 Plotted : 7/23/2019  
 File : c:\transystems\pw\_local\transyscorp-pw\ccbankaid0643930\C-FBR-MOC-101.dgn