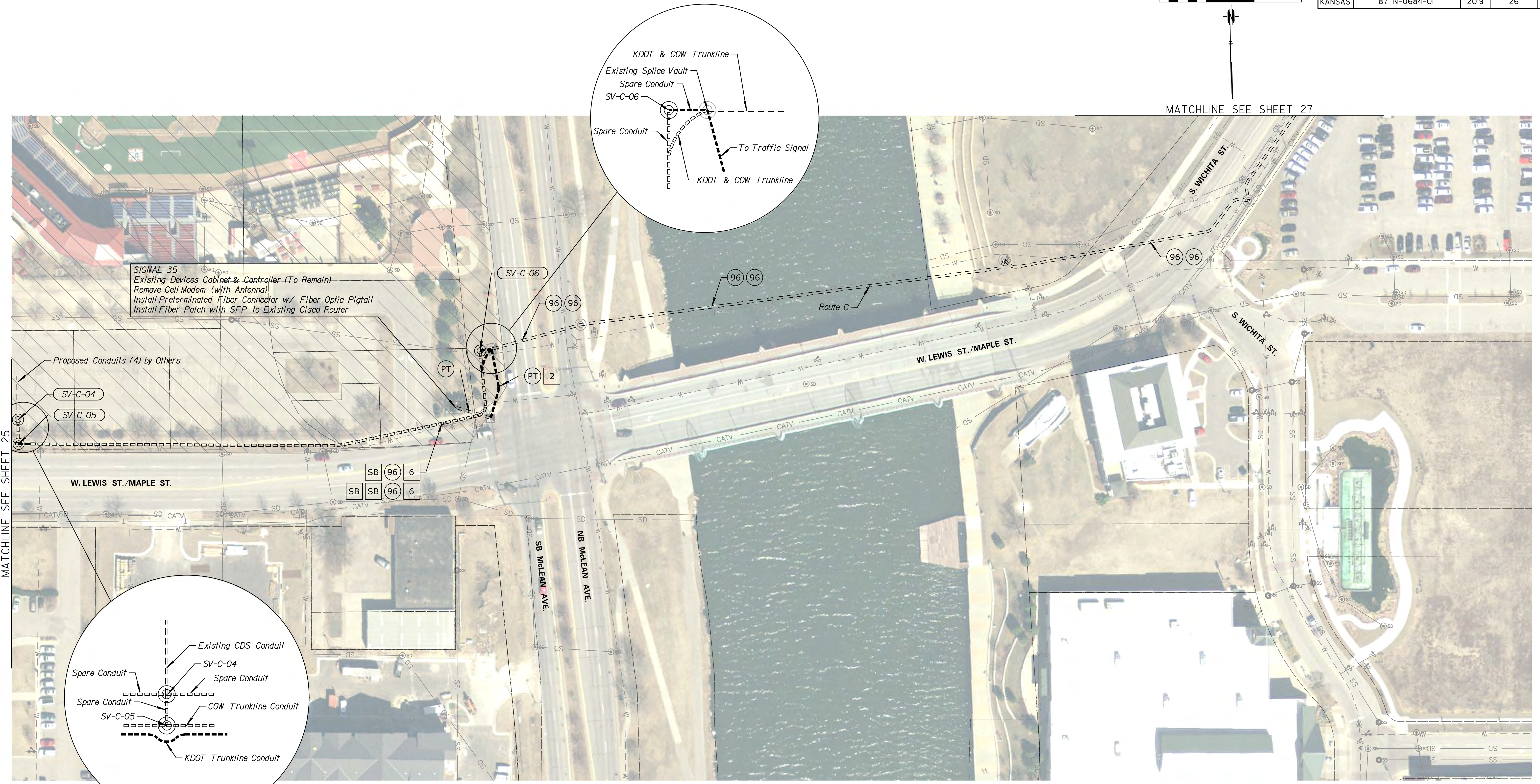


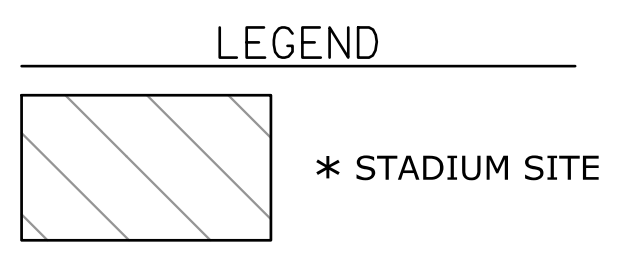
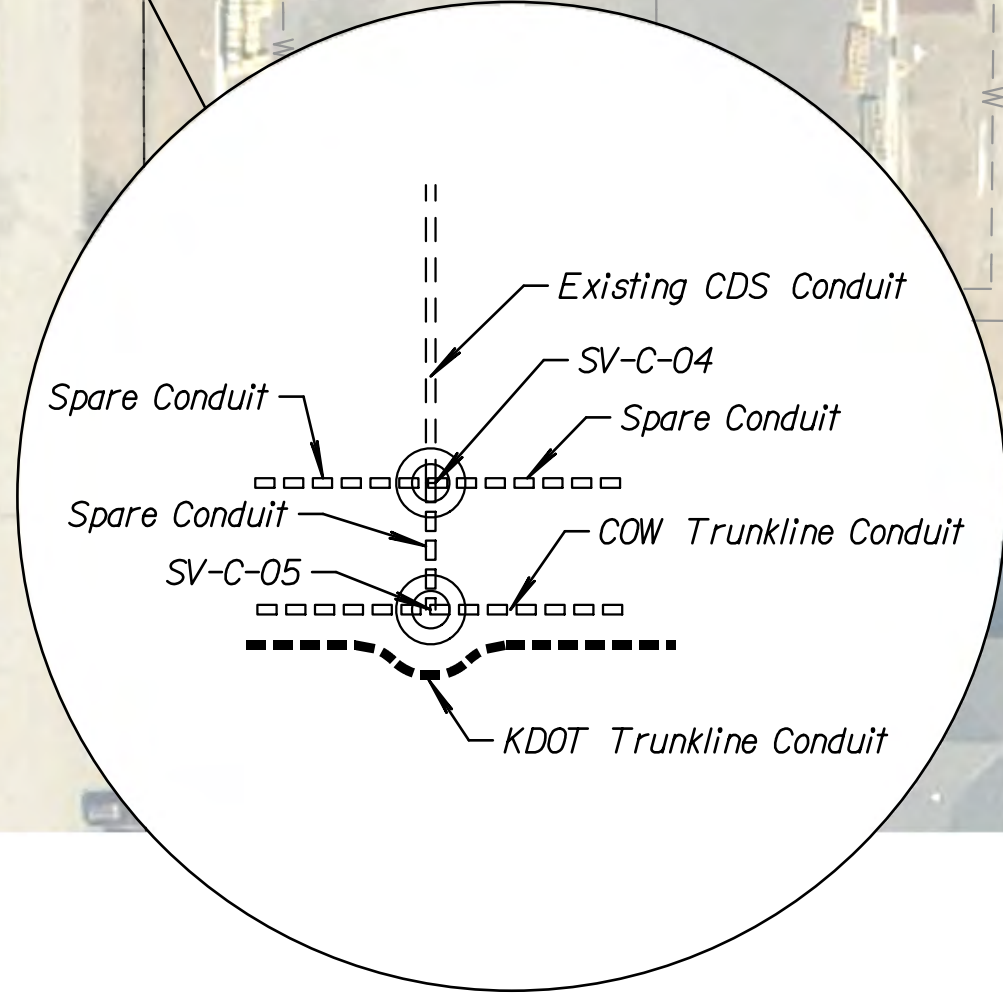
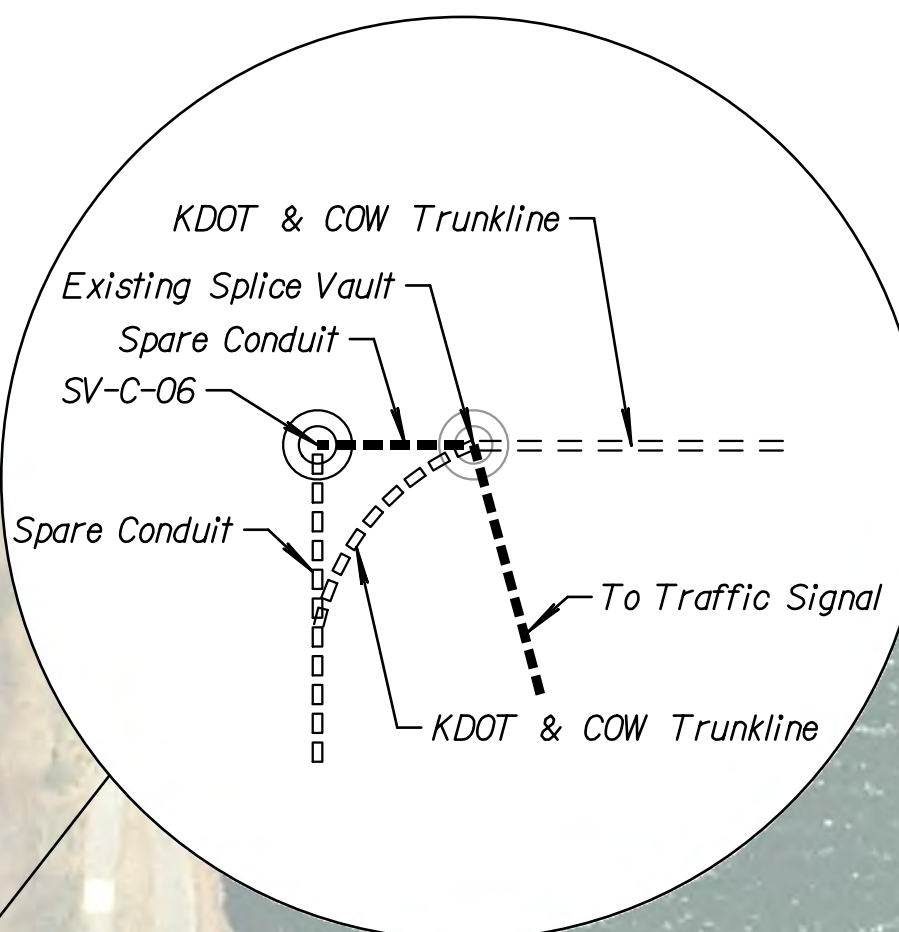
STATE	PROJECT NO.	YEAR	SHEET NO.	TOTAL SHEETS
KANSAS	87 N-0684-01	2019	26	109

DATE	BY

Drawn By : Road
 File : c:\transystems\pw_local\transyscorp-pw\ccbankaid0643930\C-FBR-MOC-102.dgn
 Plotted : 7/23/2019



SIGNAL 35
 Existing Devices Cabinet & Controller (To Remain)
 Remove Cell Modem (with Antenna)
 Install Preterminated Fiber Connector w/ Fiber Optic Pigtail
 Install Fiber Patch with SFP to Existing Cisco Router



* NOTES:
 STADIUM SITE UNDER CONST. BY OTHERS. CONTRACTOR SHALL COORDINATE WITH STADIUM CONTRACTOR FOR SITE ACCESS. UTILITIES IN THIS AREA MAY BE RELOCATED. CONTRACTOR SHALL CONDUCT SPECIAL UTILITY COORDINATION WITH UTILITIES REGARDING LOCATIONS AND RELOCATIONS OF UTILITIES. ALL WORK ASSOCIATED WITH THE COORDINATION OF THE STADIUM SITE SHALL BE SUSIDIARY TO ITEMS OF THE CONTRACT.

NOTES:
 DEVICE & CONDUIT SYMBOLGY ON PLAN SHEET IS NOT SHOWN TO SCALE FOR PLAN CLARITY. DO NOT SCALE LOCATIONS FROM PLAN SHEET. EXISTING UTILITIES & STRUCTURES ON PLAN SHEET MAY DIFFER FROM FIELD CONDITIONS & SHALL BE VERIFIED PRIOR TO ANY EXCAVATION OR CONSTRUCTION ACTIVITIES.
 FOR FIBER SCHEMATIC & SPLICING DETAILS, SEE SHEETS 52-64

KANSAS DEPARTMENT OF TRANSPORTATION
 FIBER OPTIC CONDUIT
 ROUTE C