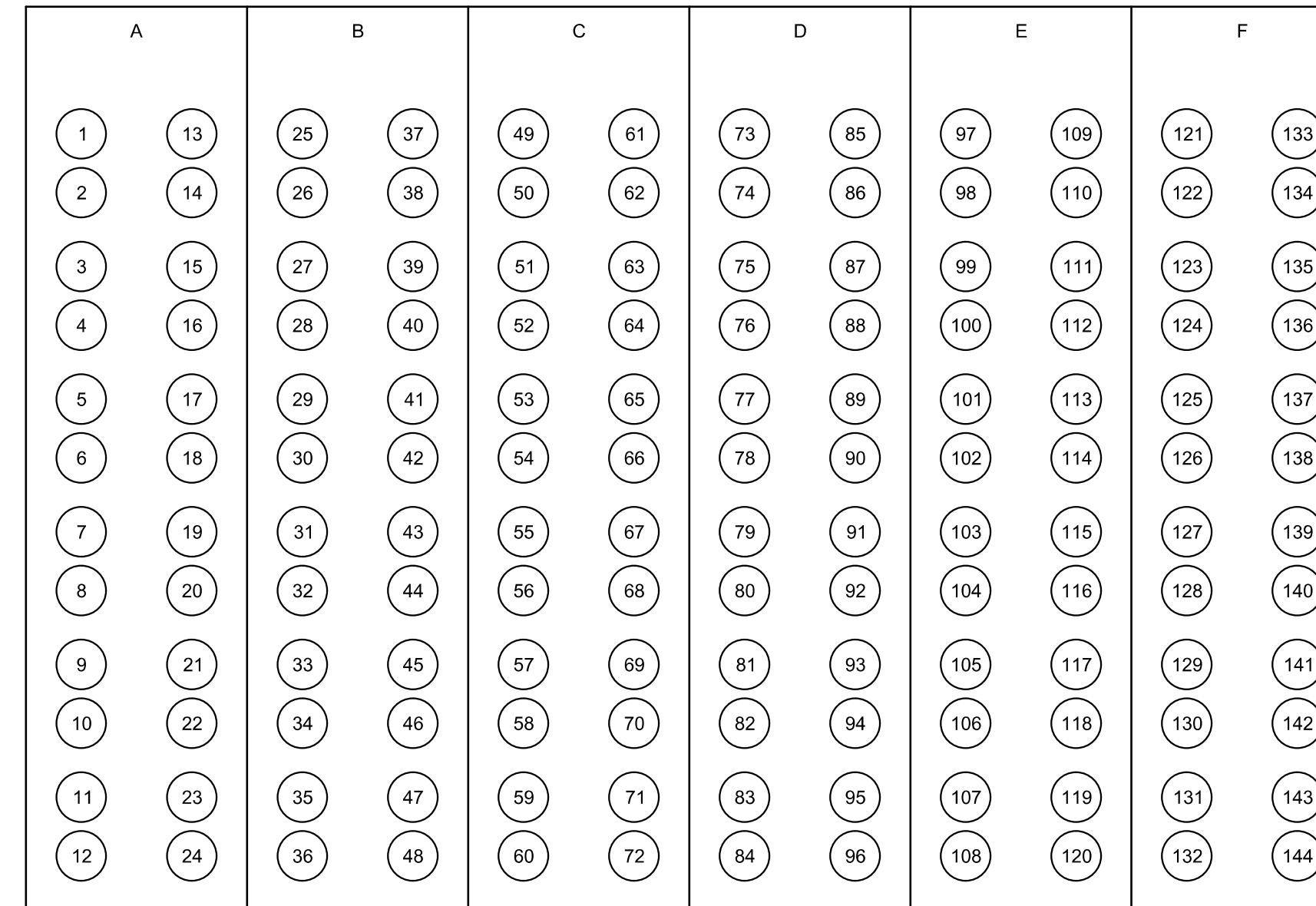


**NOTE:**

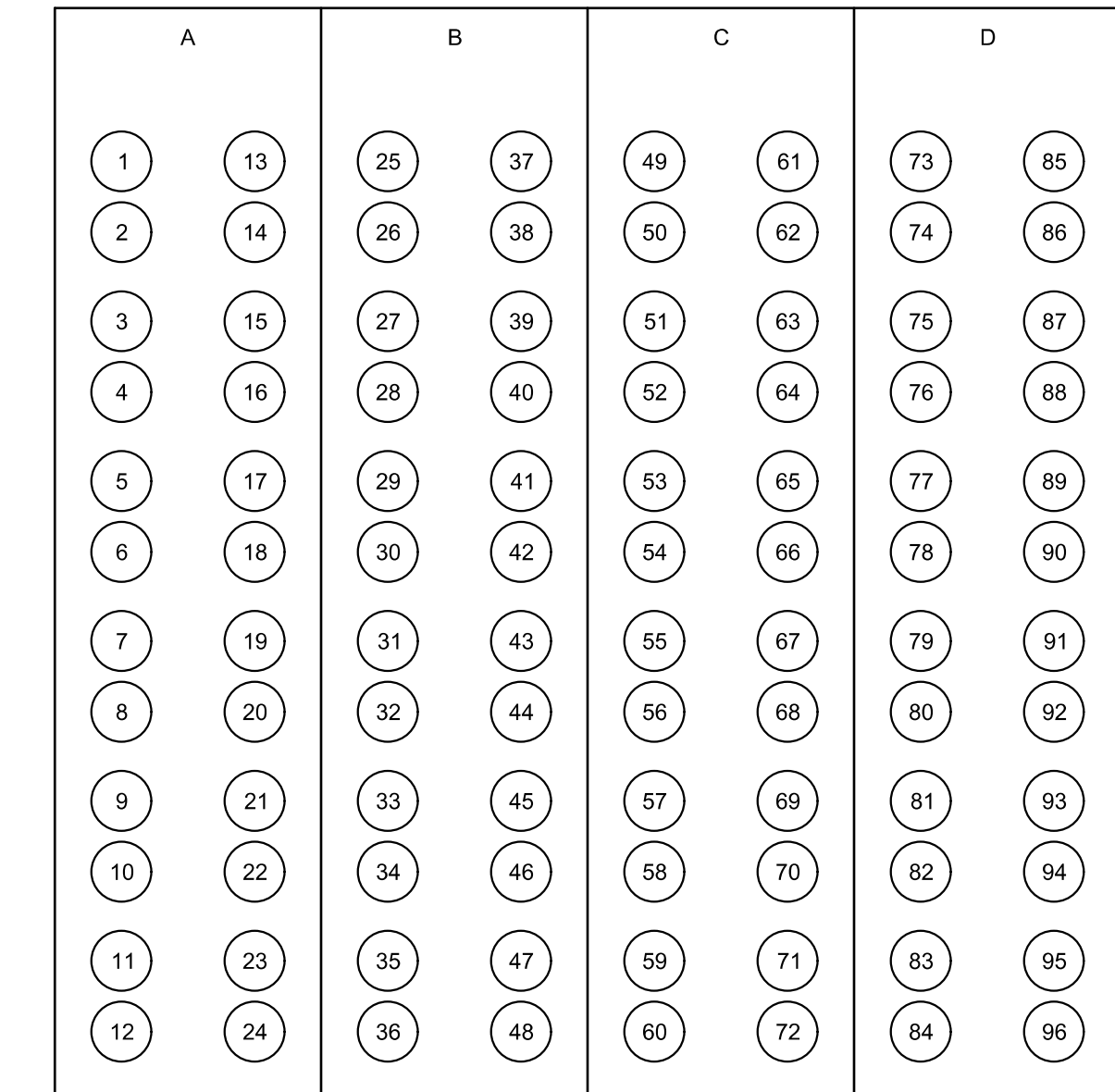
ACTUAL FIBER CONNECTIONS, SWITCH CONFIGURATION, AND PORT ASSIGNMENT SUBJECT TO CHANGE. KDOT AND CITY OF WICHITA NETWORK ENGINEER TO APPROVE FINAL FIBER CONNECTION PLANS. CONTRACTOR SHALL WORK WITH ENGINEER TO PROVIDE COMMUNICATION PATH FROM COW CITY HALL TO FIELD DEVICES.

THIS SHEET TO BE COMPLETED BY THE CONTRACTOR, INSPECTOR AND ENGINEER DURING CONSTRUCTION FOR FIELD DOCUMENTATION PURPOSES.

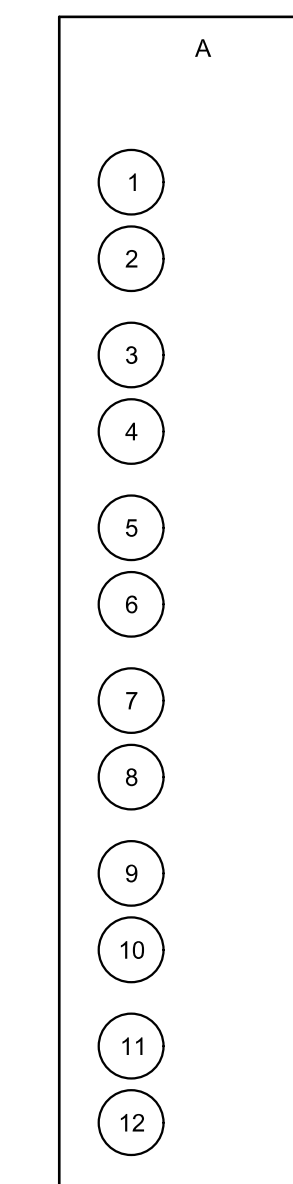
**KDOT 144 - ROUTE A (FROM CENT. POP / BULD. 6)**



**KDOT 96 - ROUTE A (TO HUB #1)**



**KDOT 12 - SOUTH TOWER**



ASSUMED 24 PATCHCABLES NEEDED (DUPLEX)

KANSAS DEPARTMENT OF TRANSPORTATION  
 HUB CABINET #2  
 KDOT  
 PATCH PANEL DETAILS

DATE	
BY	
REFERENCES NOTED	
REFERENCES CHECKED	