

STATE	PROJECT NO.	YEAR	SHEET NO.	TOTAL SHEETS
KANSAS	87 N-0684-01	2019	59	109

W < ROUTE F > E

END ROUTE A  
N < ROUTE A > S

SIGNAL 47  
CENTRAL & WASHINGTON

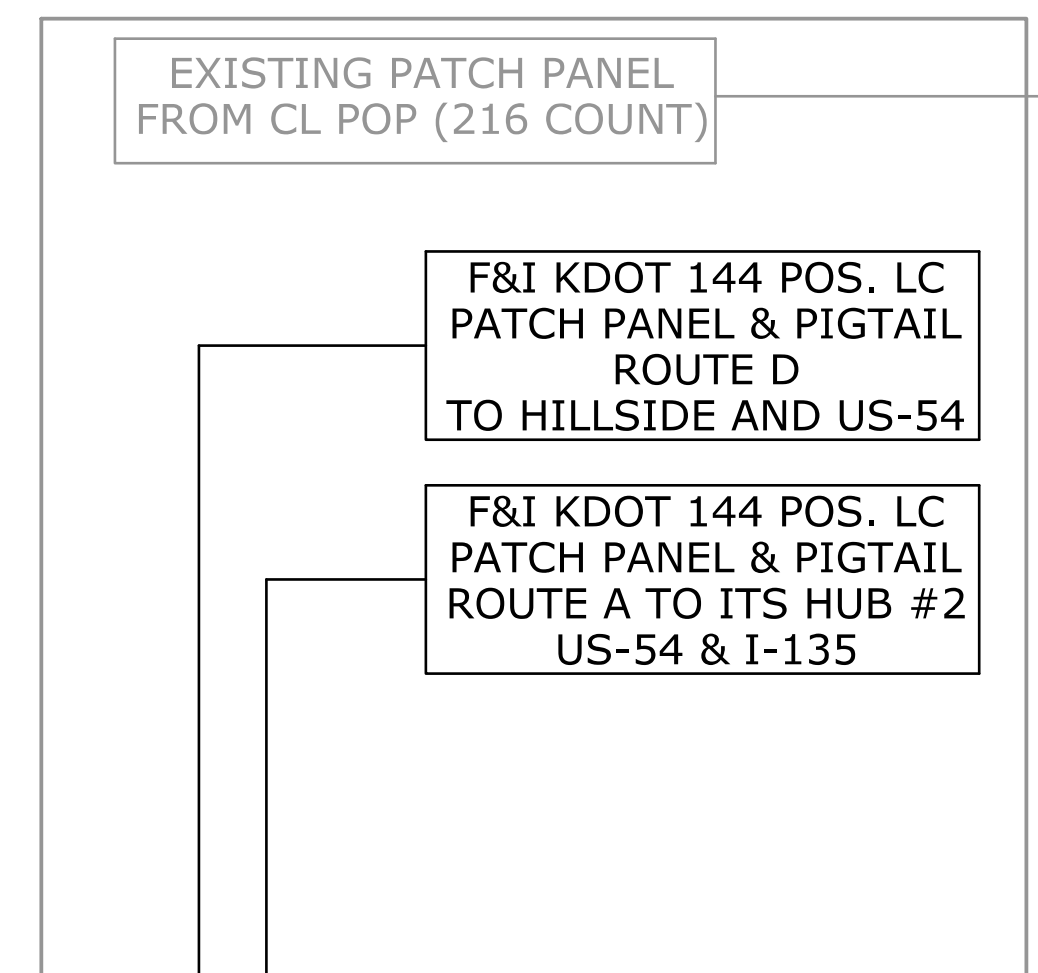
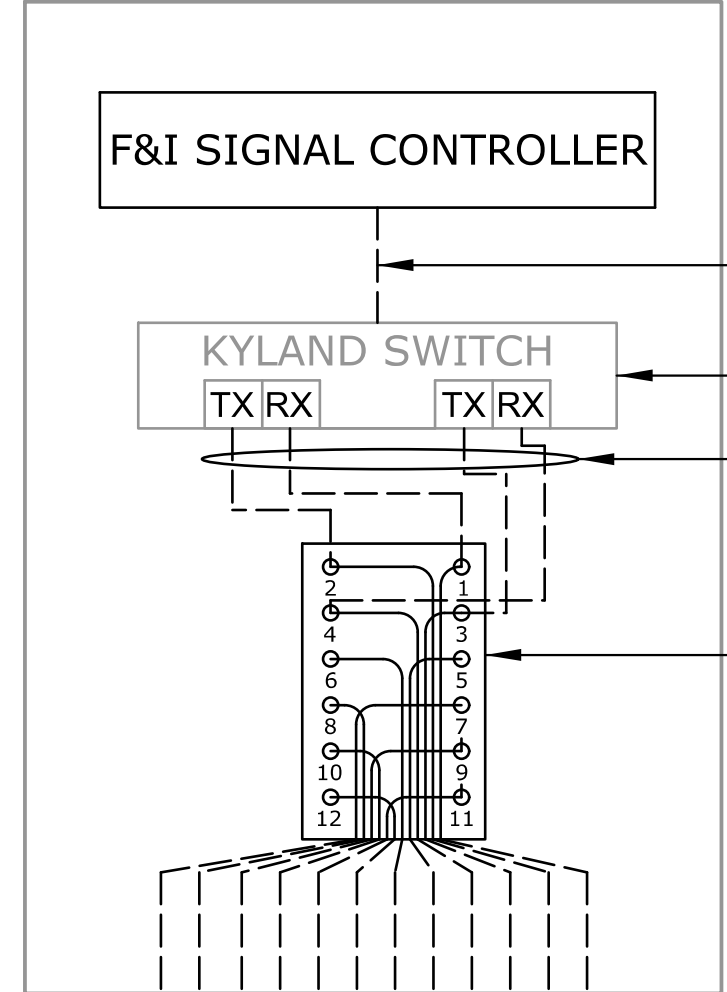
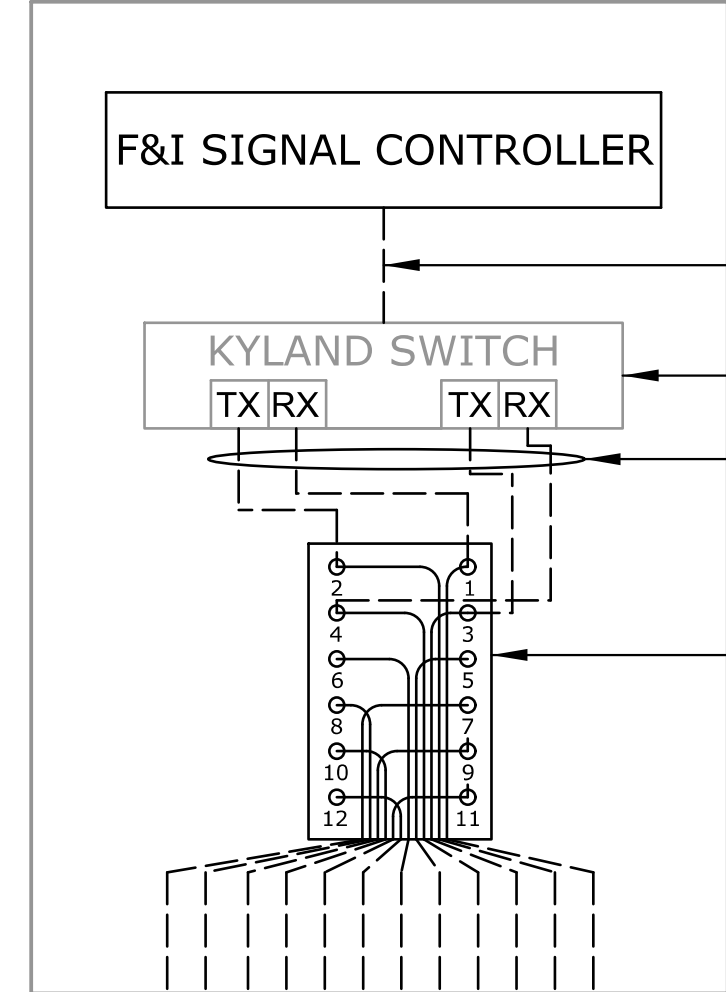
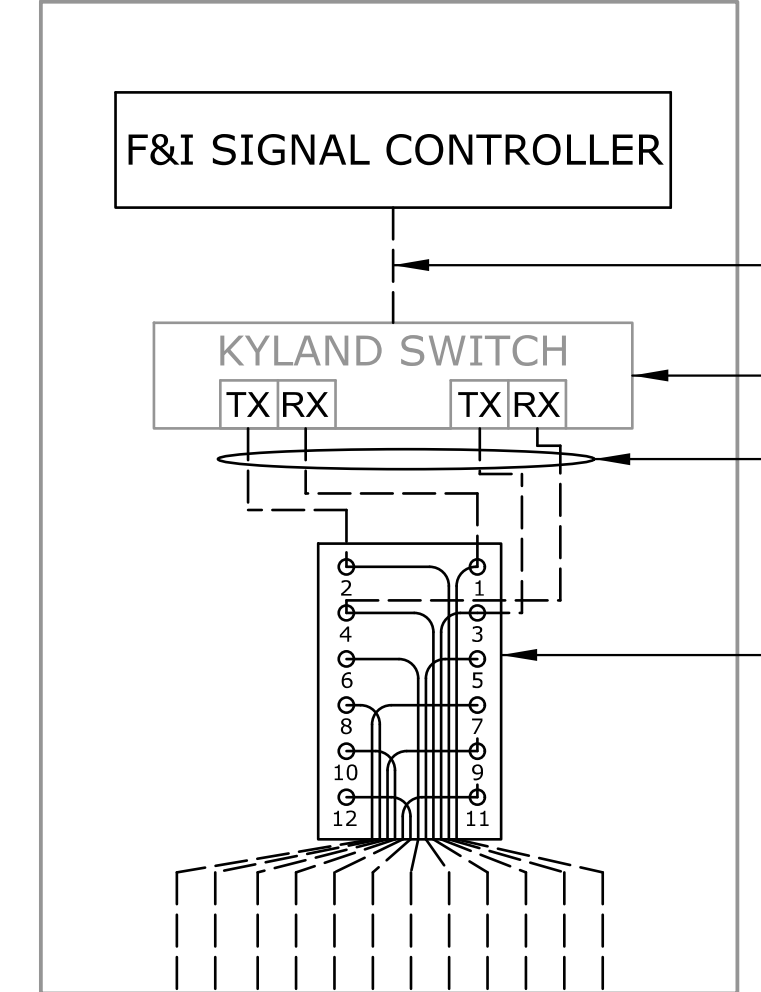
TYPICAL APPLICATION  
SIGNAL 48-49

SIGNAL 24  
I-135 & CENTRAL AVE. (ROUTE A)

BLDG 6  
EXISTING FIBER RACK  
CL POP BLDG.

DATE	BY

Drawn By : Road  
File : c:\transystems\pw\_local\transcorp-pw\1ccbankid0643930\C-ITS-FIBSCH-507.dgn



F&I 12 SMFO  
PRETERMINATED PIGTAIL

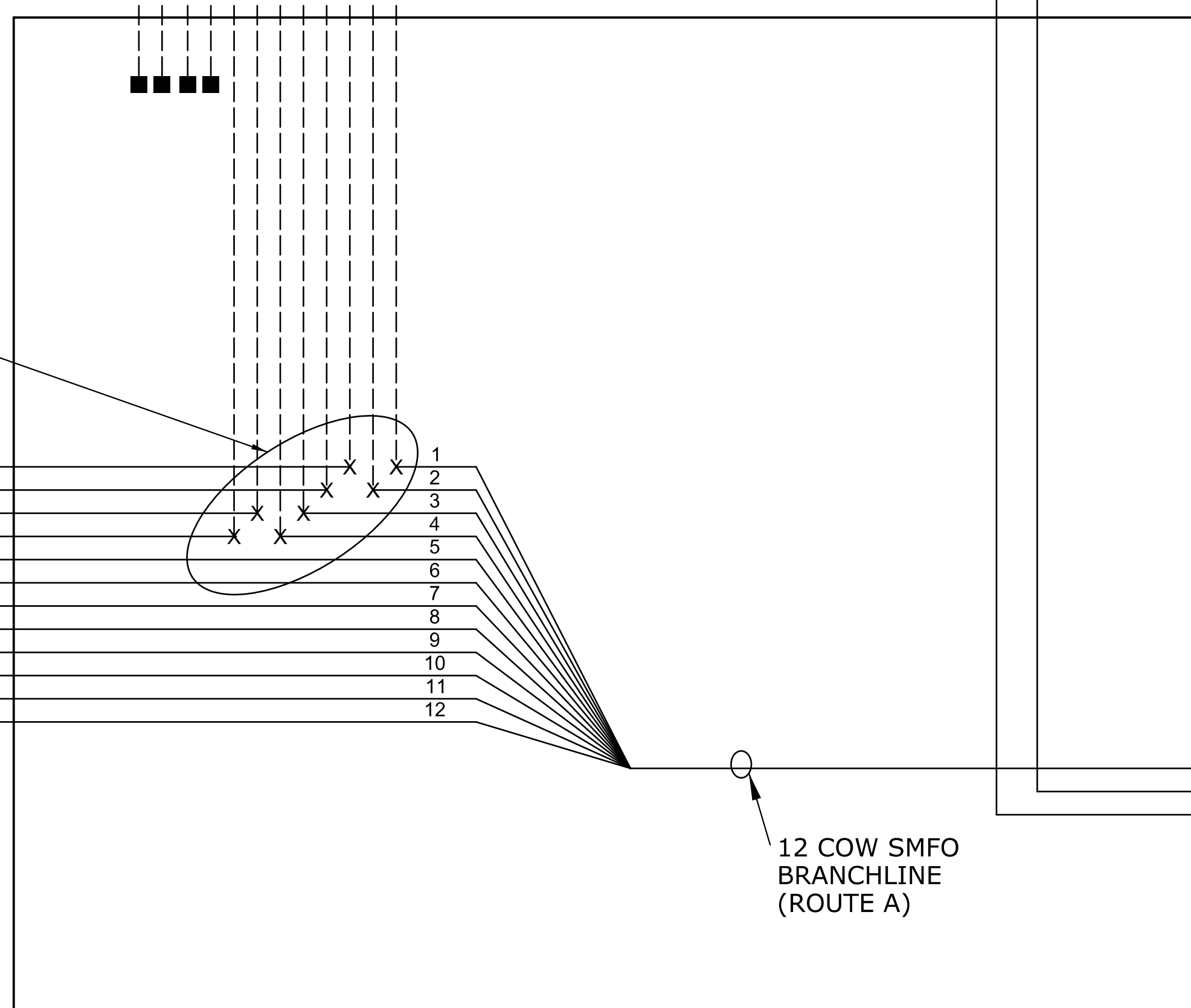
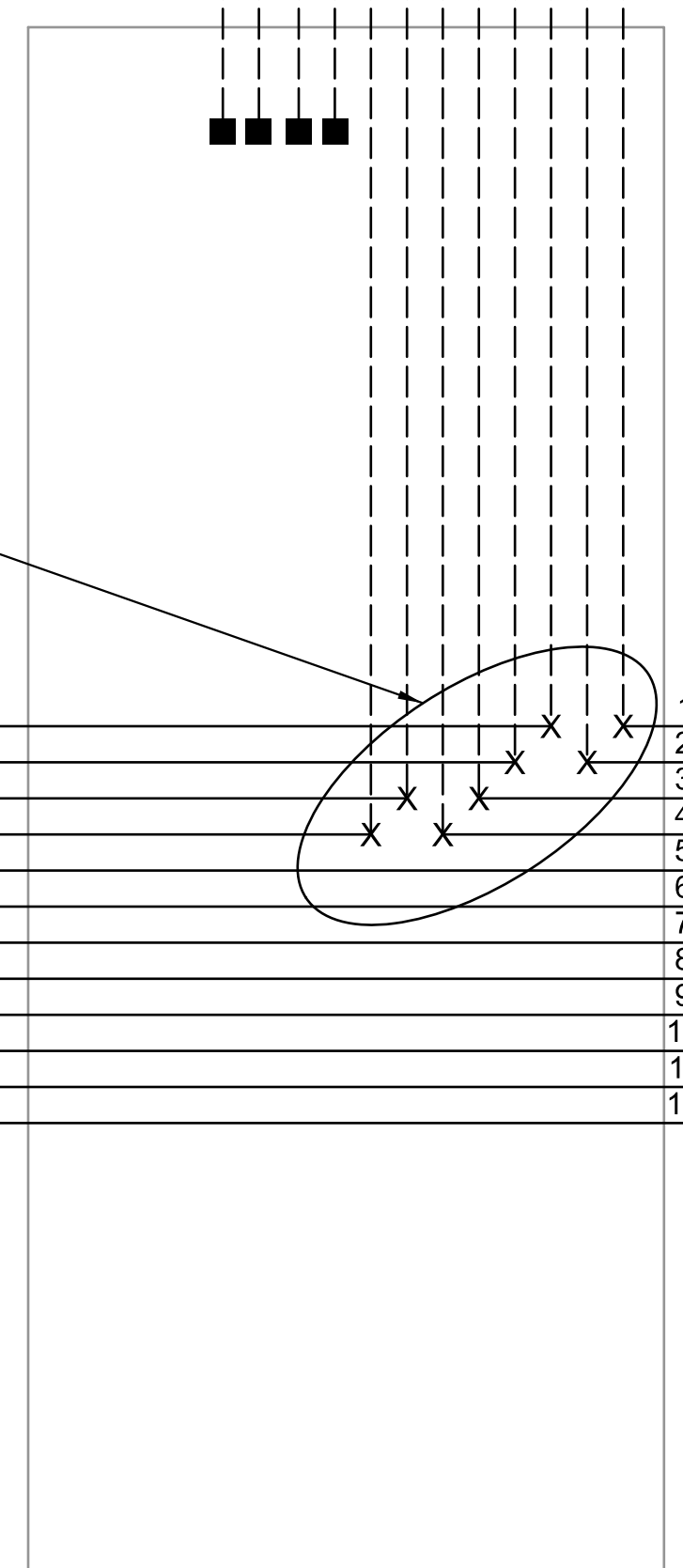
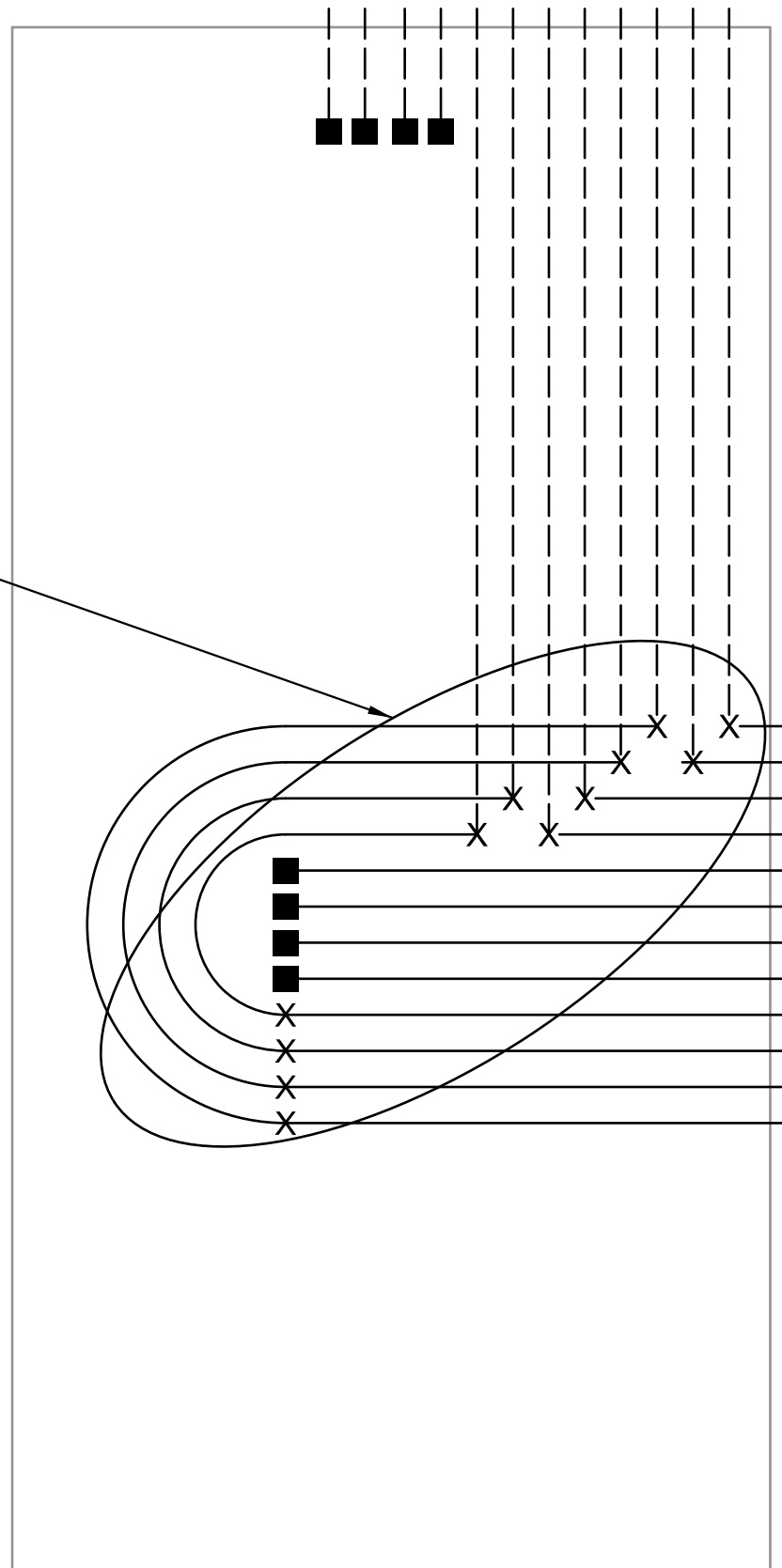
F&I 12 SMFO  
PRETERMINATED PIGTAIL

F&I 12 SMFO  
PRETERMINATED PIGTAIL

F&I SPLICE CLOSURE:  
SPlice FIBERS IN  
SMALL SPLICE CLOSURE  
(TYP.)

F&I SPLICE CLOSURE:  
SPlice FIBERS IN  
SMALL SPLICE CLOSURE  
(TYP.)

F&I SPLICE CLOSURE:  
SPlice FIBERS IN  
LARGE SPLICE CLOSURE  
(TYP.)



12 COW SMFO  
BRANCHLINE

12 COW SMFO  
BRANCHLINE  
(ROUTE F)

12 COW SMFO  
BRANCHLINE  
(ROUTE A)

12 COW SMFO  
BRANCHLINE (ROUTE A)

144 KDOT SMFO TRUNKLINE  
(FROM ROUTE D)

144 KDOT SMFO  
TRUNKLINE (TO HUB #2)

ROUTE A TRUNKLINE  
(SEE SHEET 58  
(FROM SOUTH))

EXISTING CONNECTION TO TMC  
VIA HUBDOCK

KANSAS DEPARTMENT OF TRANSPORTATION

ROUTE A & F  
FIBER OPTIC SCHEMATIC