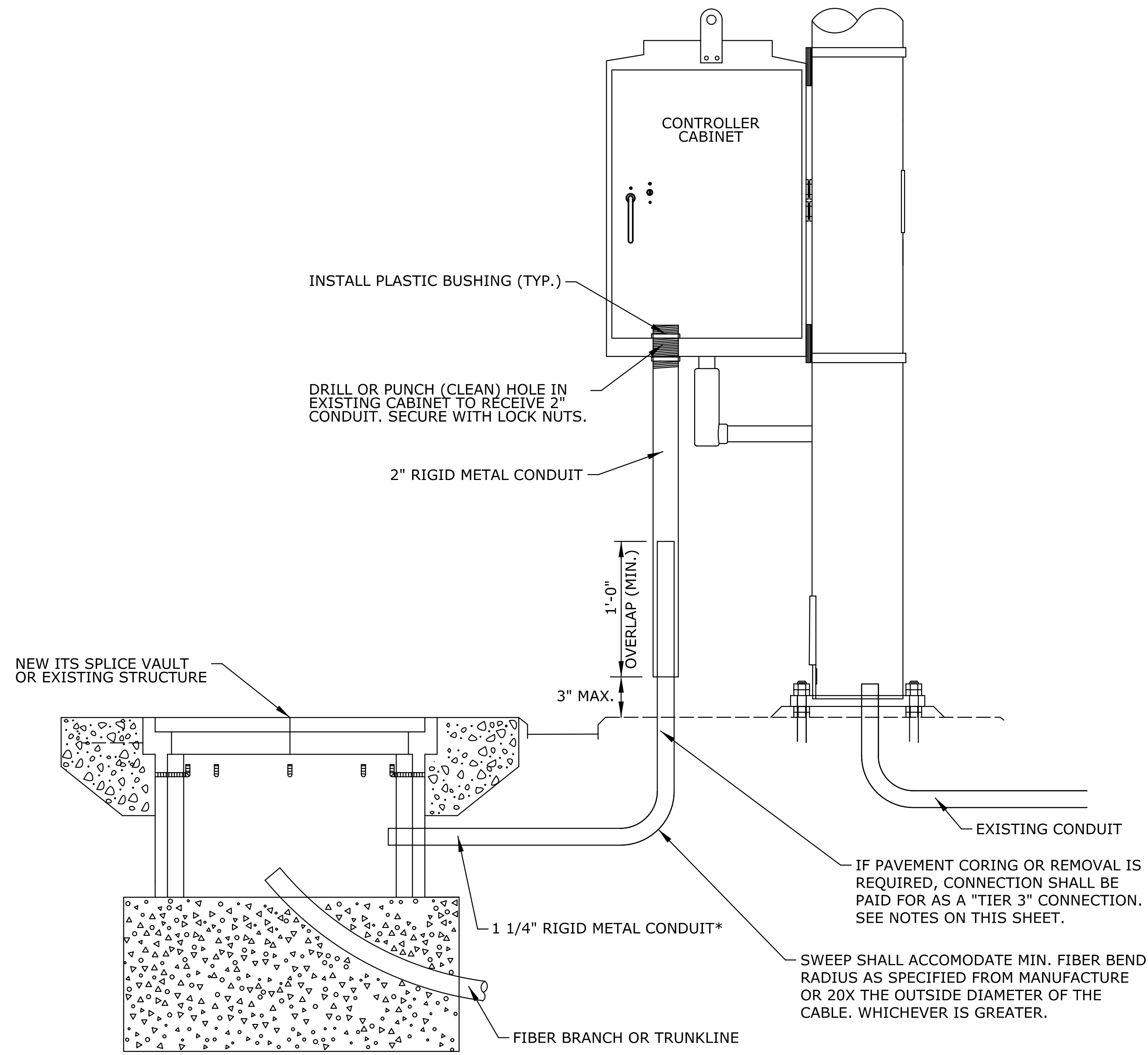


STATE	PROJECT NO.	YEAR	SHEET NO.	TOTAL SHEETS
KANSAS	87 N-0684-01	2019	74	109

DATE	
BY	
REFERENCES NOTED	
REFERENCES CHECKED	

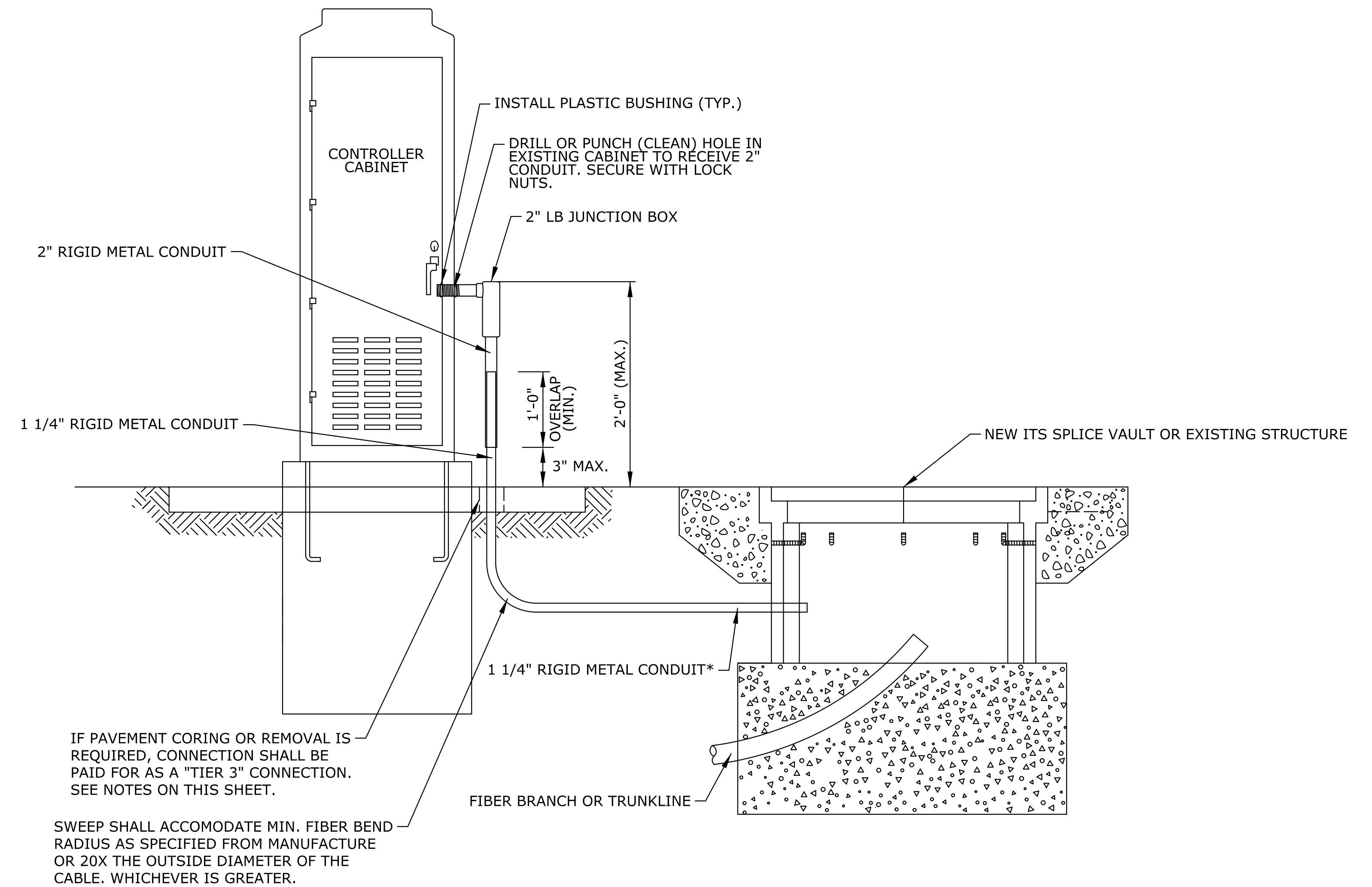


POLE MOUNTED CABINET TIER 2 & 3 CONNECTION DETAIL

*PVC OR HDPE MAY BE USED UNDERGROUND

GENERAL NOTES:

- CONDUIT SHALL ENTER EXISTING PAD MOUNTED CABINETS FROM THE SIDE.
- CONDUIT SHALL ENTER EXISTING POLE MOUNTED CABINETS FROM THE BOTTOM.
- SEAL AND WATERPROOF ALL CONDUIT ENTRANCES TO CABINET WITH 50 YEAR SILICONE CAULK. SEAL SHALL BE NEAT AND CLEAN.
- PROVIDE A PLASTIC BUSHING TO ALL METALLIC CONDUIT ENDS TO PROTECT ANY CABLES (ELECTRICAL OR FIBER) FROM ABRASION.
- ALL CONDUIT INSTALLED ABOVE GROUND SHALL BE RIGID METAL CONDUIT (RMC). WHERE RMC TRANSITIONS FROM ABOVE GROUND TO UNDERGROUND, RMC SHALL EXTEND A MINIMUM OF 18" BELOW SURFACE. PVC OR HDPE CONDUIT MAY BE USED UNDERGROUND.



PAD MOUNTED CABINET TIER 2 & 3 CONNECTION DETAIL

*PVC OR HDPE MAY BE USED UNDERGROUND

FOR PAD MOUNTED CABINETS, THE PRIMARY ENTRANCE FOR TIER 2 & 3 CONNECTIONS SHALL BE LOCATED IN THE LEFT REAR (FROM CABINET FRONT). IF THIS LOCATION CANNOT BE ACCOMMODATED, CONTRACTOR SHALL NOTIFY & WORK WITH THE ENGINEER TO FIND A SUITABLE ALTERNATIVE LOCATION.

MEASUREMENT & PAYMENT

1. PAYMENT FOR CONNECTION TO EXISTING CONTROLLER CABINETS AT THE CONTRACT UNIT PRICE IS FULL COMPENSATION FOR THE SPECIFIED WORK AND INCLUDES ALL MATERIALS, LABOR AND EQUIPMENT NEEDED TO COMPLETE THIS WORK.

2. CONNECTION TO EXISTING CONTROLLER CABINET SHALL BE MEASURED BY EACH AND SHALL BE SEPARATED INTO THREE (3) TIERS. CONTRACTOR SHALL REQUEST AND RECEIVE WRITTEN APPROVAL FROM ENGINEER PRIOR TO ADVANCING TO TIER 2 OR TIER 3 CONNECTIONS.

3. CONNECTION TIERS

TIER 1

CONTRACTOR IS ABLE TO UTILIZE EXISTING CONDUIT, JUNCTION BOXES, ETC. IN ORDER TO ADD CONNECTION INTO THE EXISTING CABINET. TIER 1 CONNECTIONS ARE CONSIDERED SUBSIDIARY TO OTHER ITEMS OF THE CONTRACT. NO ADDITIONAL PAYMENT FOR CONNECTIONS WILL BE MADE.

TIER 2

CONTRACTOR IS UNABLE TO UTILIZE EXISTING CONDUIT OR STRUCTURES TO ADD FIBER CONNECTION AND REQUIRES A NEW PENETRATION INTO THE EXISTING CABINET (SEE DETAILS THIS SHEET).

TIER 3

THIS IS THE SAME REQUIREMENT AS TIER 2 EXCEPT THAT ADDITIONAL PAVEMENT CORING OR REMOVAL IS REQUIRED TO PLACE CONDUIT UNDERGROUND. TIER 3 SHALL BE USED IF PAVEMENT CORING OR REMOVAL IS REQUIRED ON PAVEMENTS 2" OR GREATER IN THICKNESS. TIER 3 WILL BE PAID BY THE UNIT PRICE SHOWN IN THE CONTRACT DOCUMENTS REGARDLESS OF EXISTING PAVEMENT THICKNESS OR LIMITS OF PAVEMENT REMOVAL.

KANSAS DEPARTMENT OF TRANSPORTATION
SIGNAL CONTROLLER CABINET
CONNECTION DETAILS