

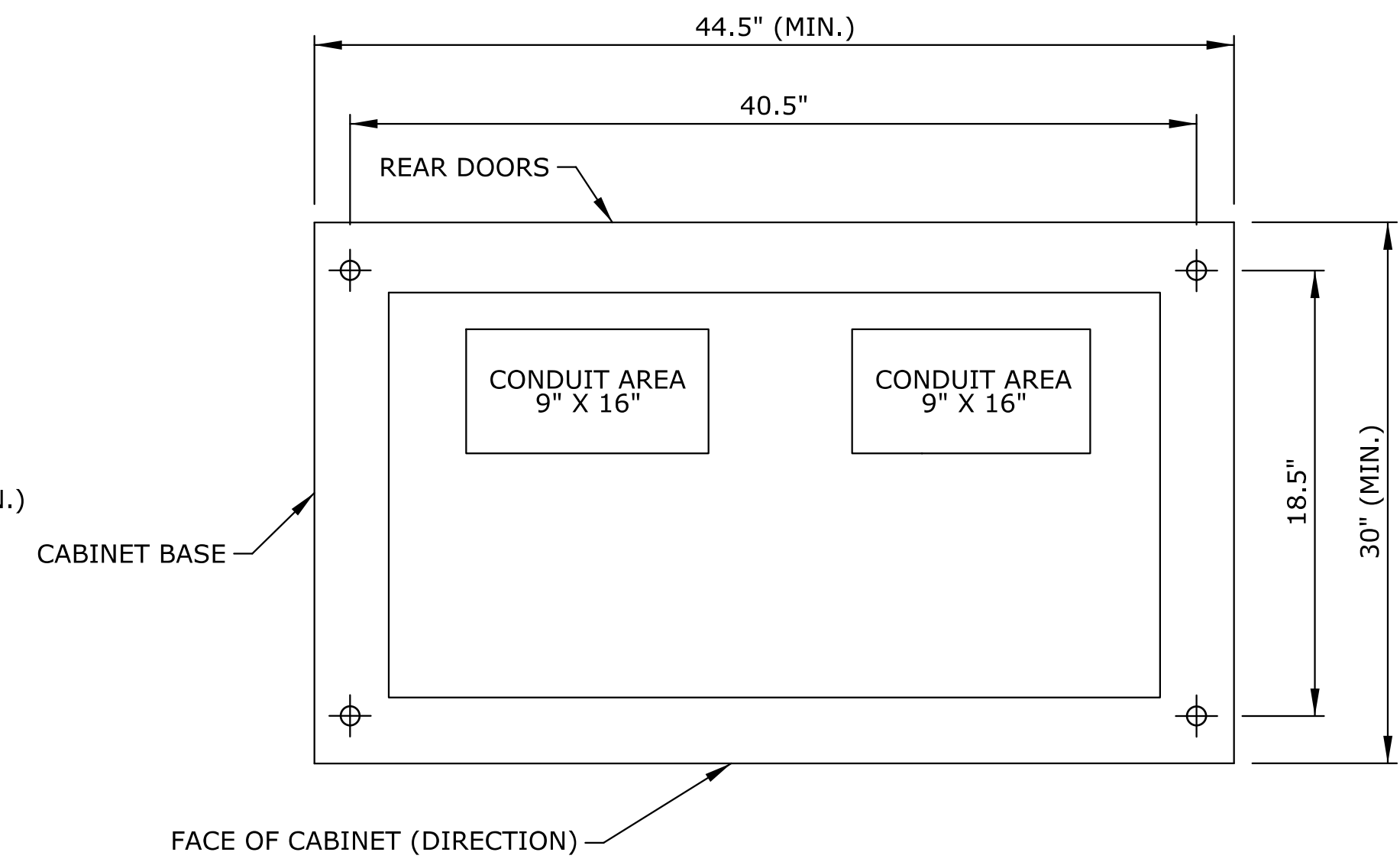
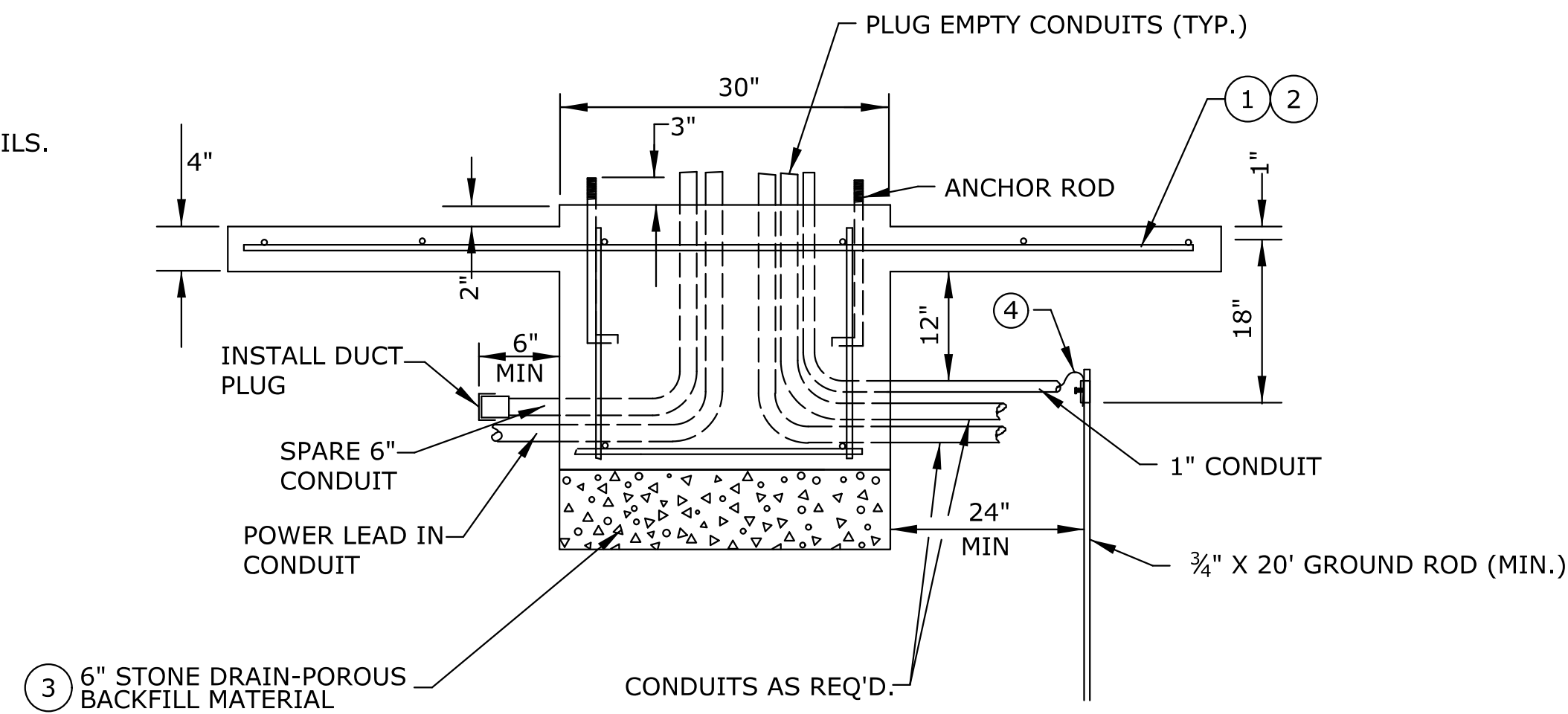
STATE	PROJECT NO.	YEAR	SHEET NO.	TOTAL SHEETS
KANSAS	87 N-0684-01	2019	79	109

CABINET FOUNDATION NOTES:

- ① ALL REINFORCING BAR USED IN THE CONSTRUCTION OF THE CABINET FOUNDATION SHALL BE NO. 4 BARS, EVENLY SPACED AT 12 IN SPACING, +/- 1.5 IN. SEE ITS-D06 FOR DETAILS.
- ② REBAR SHALL BE ADJUSTED TO ACCOMMODATE CONDUIT AND BOLLARDS.
- ③ STONE DRAIN MATERIAL SHALL CONFORM TO THE STANDARD SPECIFICATION.
- ④ MINIMUM NO. 4 COPPER GROUNDING CONDUCTOR FROM CABINET EQUIPMENT GROUND BUS TO GROUND ROD.
- ⑤ F&I 2 IN SPARE CONDUIT, STUB OUT 6 IN FROM FACE OF FOUNDATION. F&I DUCT PLUG.

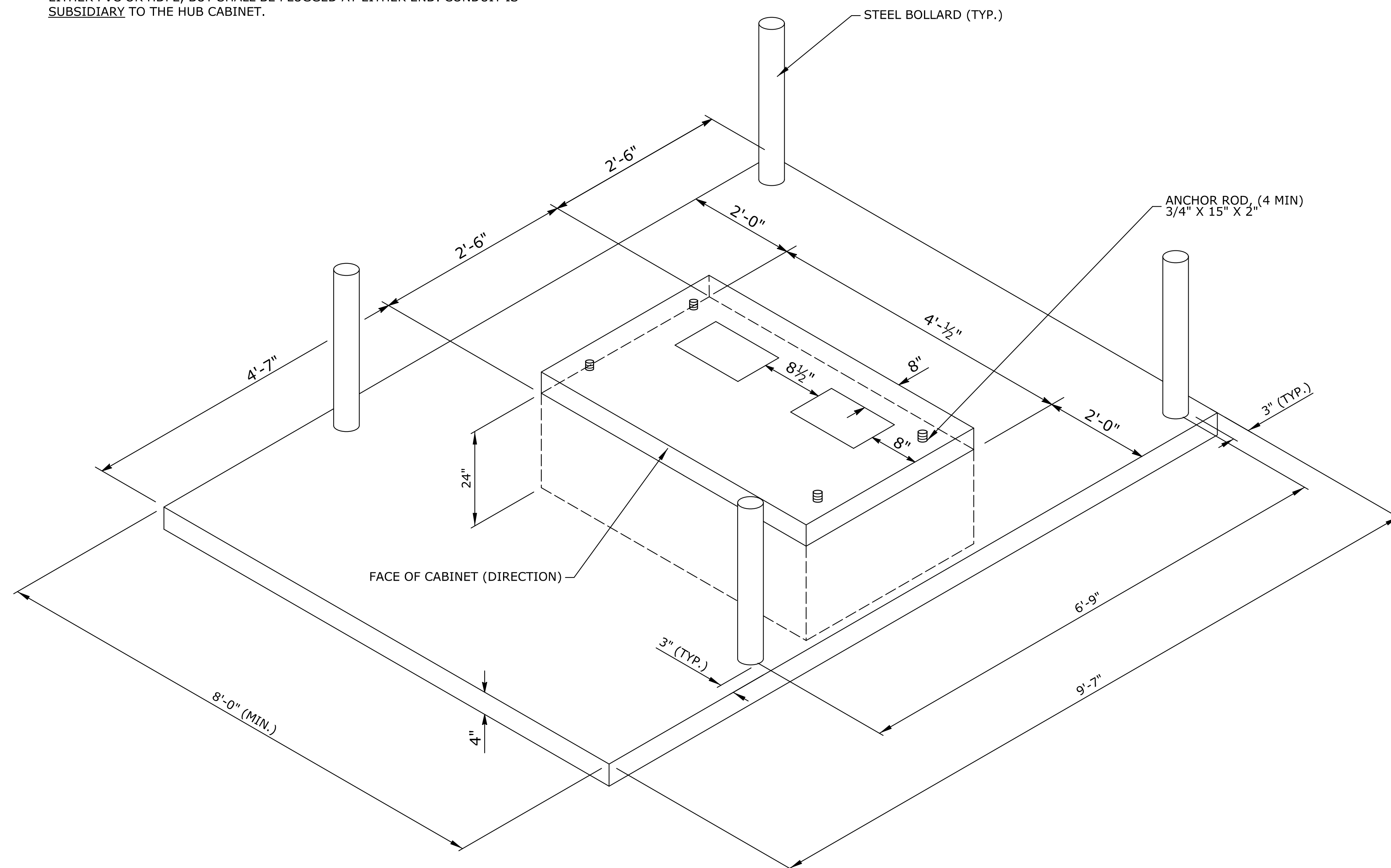
GENERAL NOTES:

1. BASE DIMENSIONS MAY VARY DEPENDING ON CABINET. CONTRACTOR SHALL VERIFY DIMENSIONS FROM CABINET MANUFACTURE PRIOR TO CONSTRUCTING BASE.
2. BOLLARDS SHALL SPACED SO THEY DO NOT INTERFERE WITH CABINET DOORS. THIS SHALL BE FIELD VERIFIED PRIOR TO CONSTRUCTION.
3. ON HUB CABINETS (NOT SIGNAL CABINETS), AN EMPTY 6" CONDUIT SHALL BE PLACED BETWEEN HUB CABINET AND ADJACENT SPLICE VAULTS. CONDUIT MAY BE EITHER PVC OR HDPE, BUT SHALL BE PLUGGED AT EITHER END. CONDUIT IS SUBSIDIARY TO THE HUB CABINET.

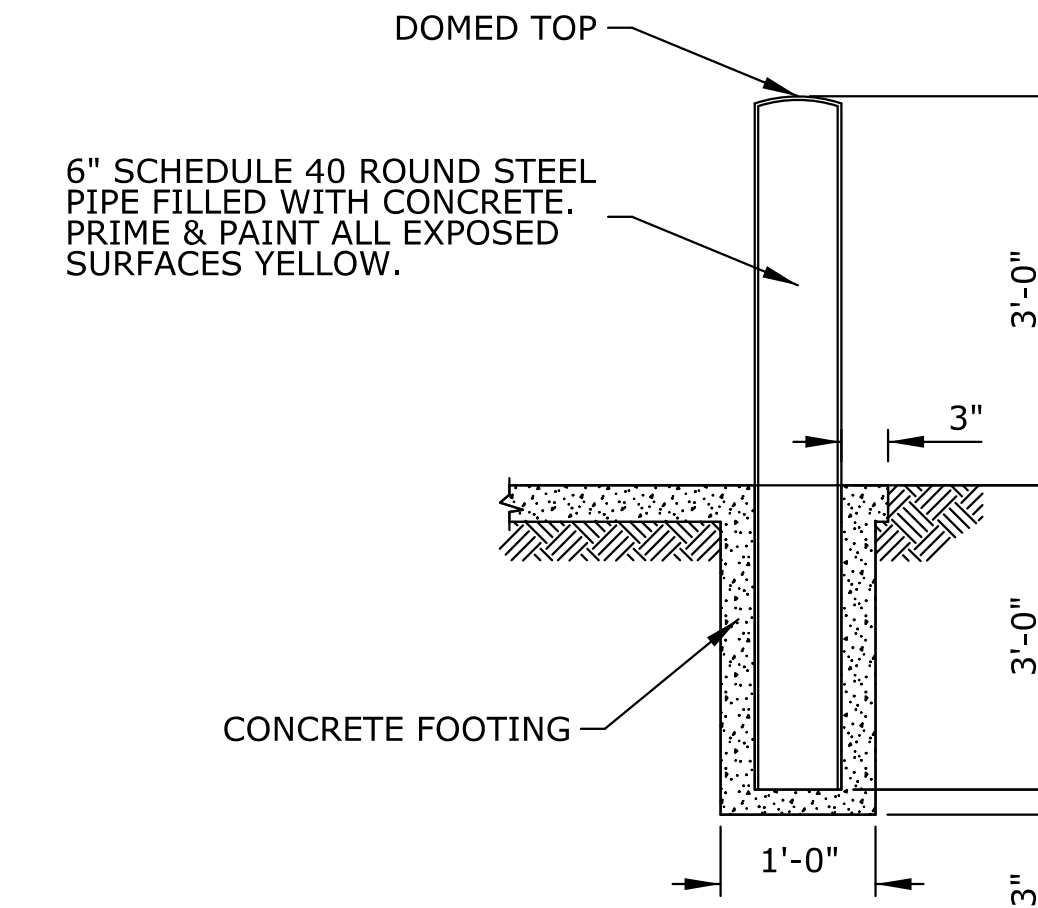


BASE PLAN

BASE DIMENSIONS MAY VARY DEPENDING ON CABINET. CONTRACTOR SHALL VERIFY DIMENSIONS FROM CABINET MANUFACTURE PRIOR TO CONSTRUCTING BASE.



FOUNDATION & PAD DETAILS



BOLLARD DETAIL

1. 6" SCHEDULE 40 ROUND STEEL PIPE FILLED WITH CONCRETE. PRIME & PAINT ALL EXPOSED SURFACES YELLOW. DOME TOP OF BOLLARD.
2. BOLLARDS SHALL SPACED SO THEY DO NOT INTERFERE WITH CABINET DOORS. THIS SHALL BE FIELD VERIFIED PRIOR TO CONSTRUCTION.
3. ALL WORK ASSOCIATED WITH INSTALLATION, CONSTRUCTION, & FABRICATION OF 6" STEEL BOLLARDS SHALL BE SUBSIDIARY TO THE BID ITEM "STEEL BOLLARD (6)". THIS SHALL INCLUDE ALL THE TIME, MATERIALS, & EQUIPMENT NECESSARY FOR INSTALLATION & FABRICATION WHETHER SPECIFICALLY MENTIONED OR NOT. CONCRETE FOOTING SHALL BE SUBSIDIARY TO "STEEL BOLLARD (6)".

KANSAS DEPARTMENT OF TRANSPORTATION
ITS DOUBLE CABINET
FOUNDATION DETAILS

DATE	BY	REFERENCES NOTED	REFERENCES CHECKED

Drawn By : Road
File : c:\transystems\pw_local\transyscorp-pw\ccbankaid0643930\C-DT-Double Cabinet Foundation.dgn
Plotted : 7/23/2019