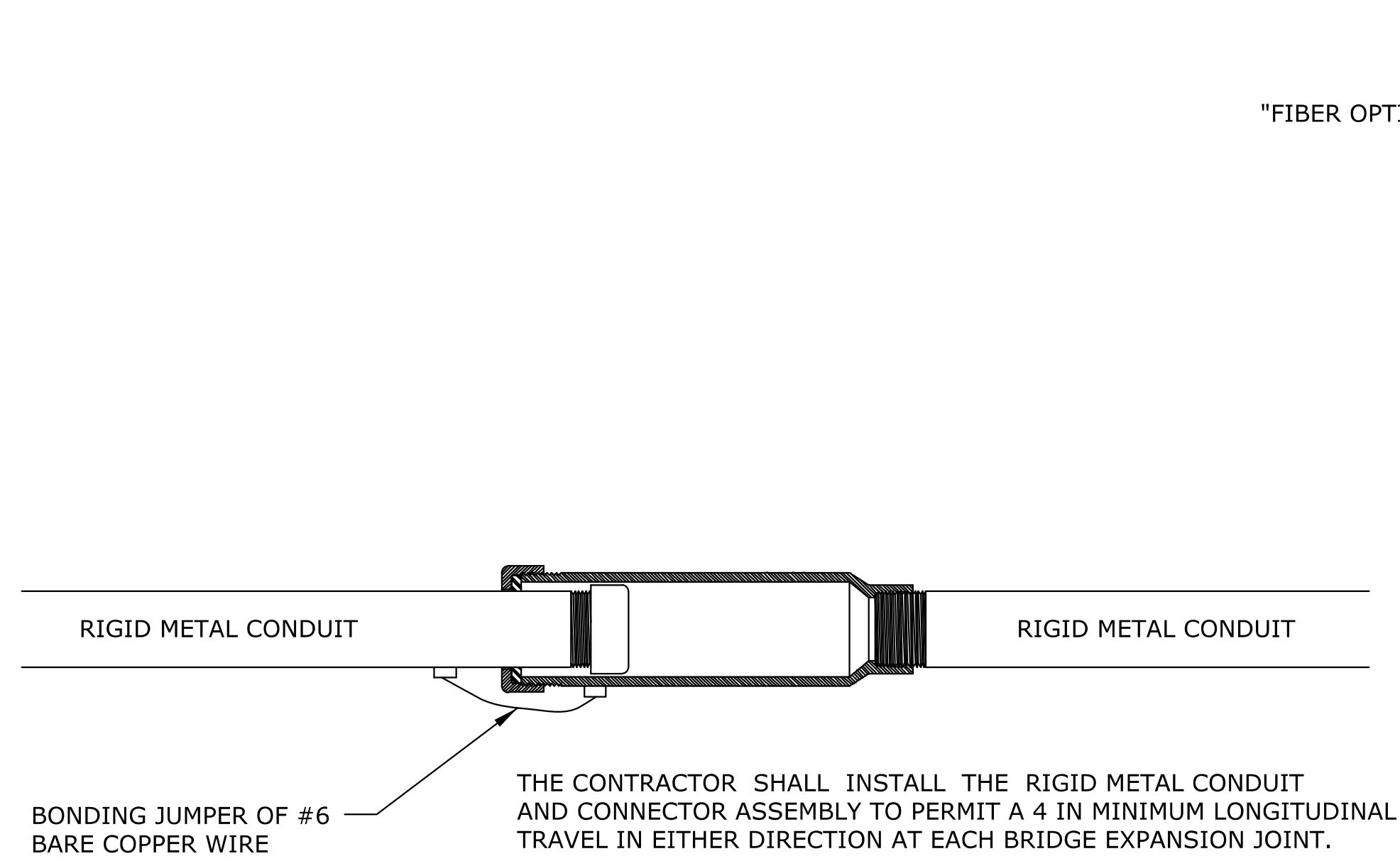
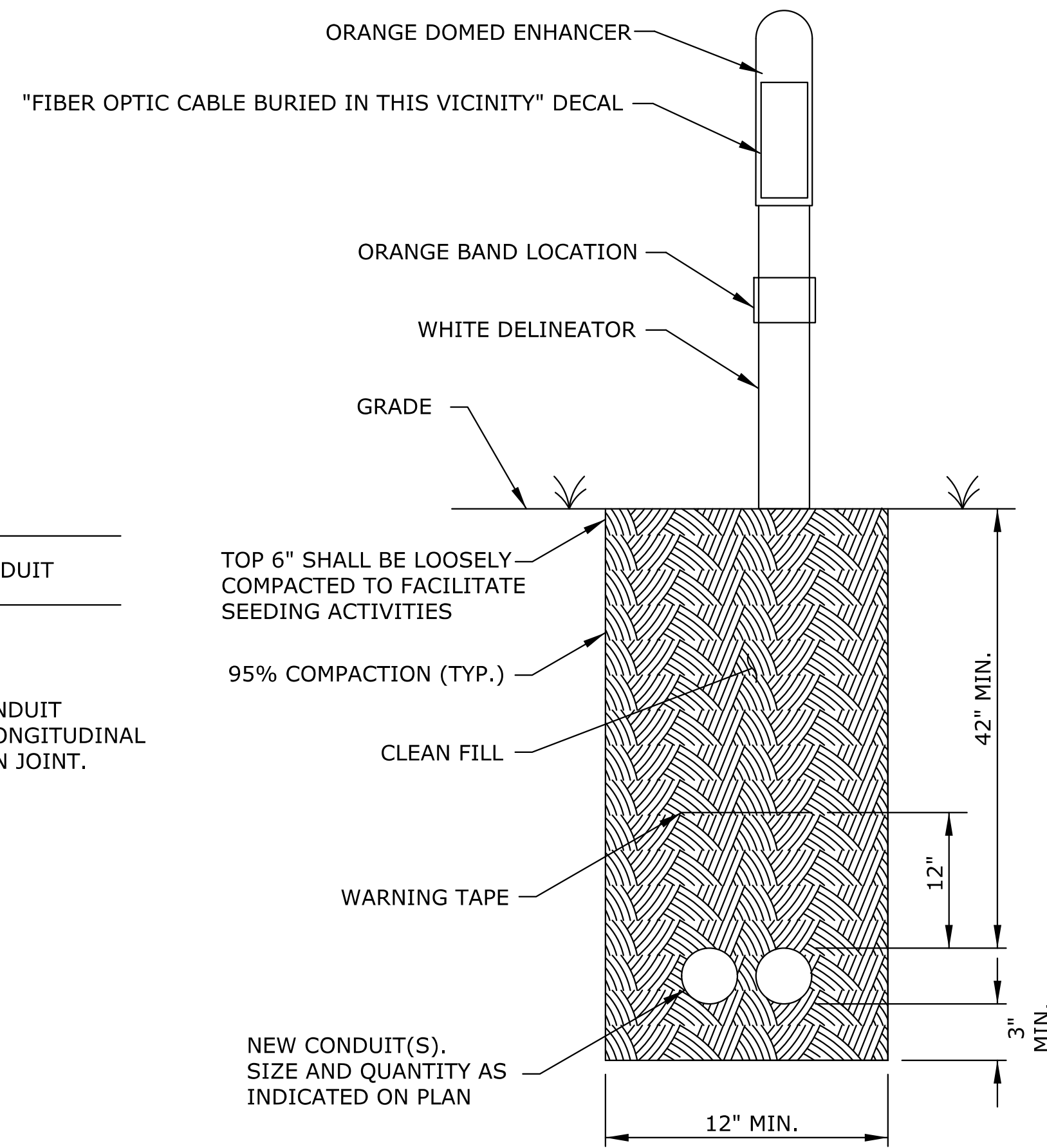


STATE	PROJECT NO.	YEAR	SHEET NO.	TOTAL SHEETS
KANSAS	87 N-0684-01	2019	82	109



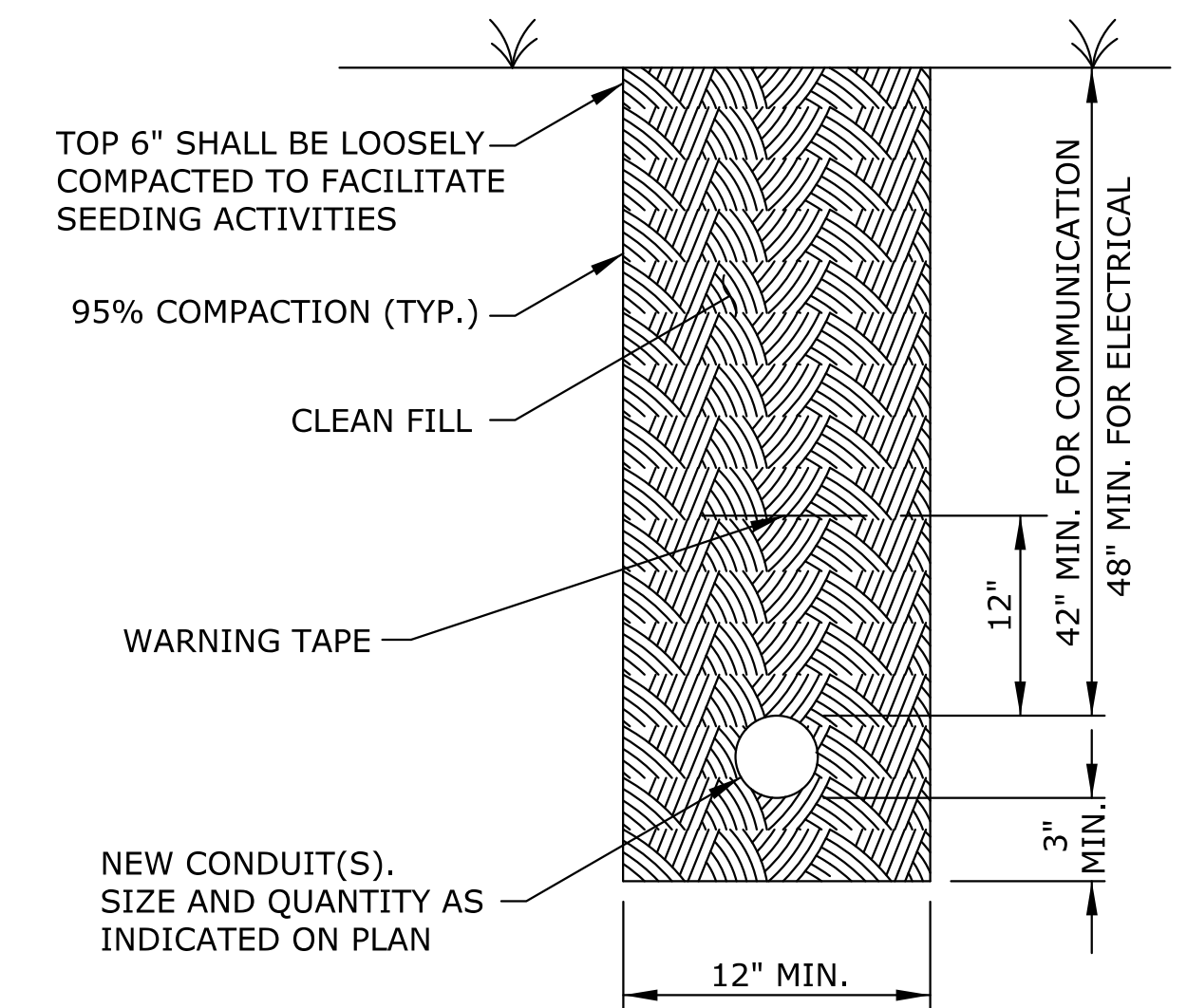
**EXPANSION FITTING**



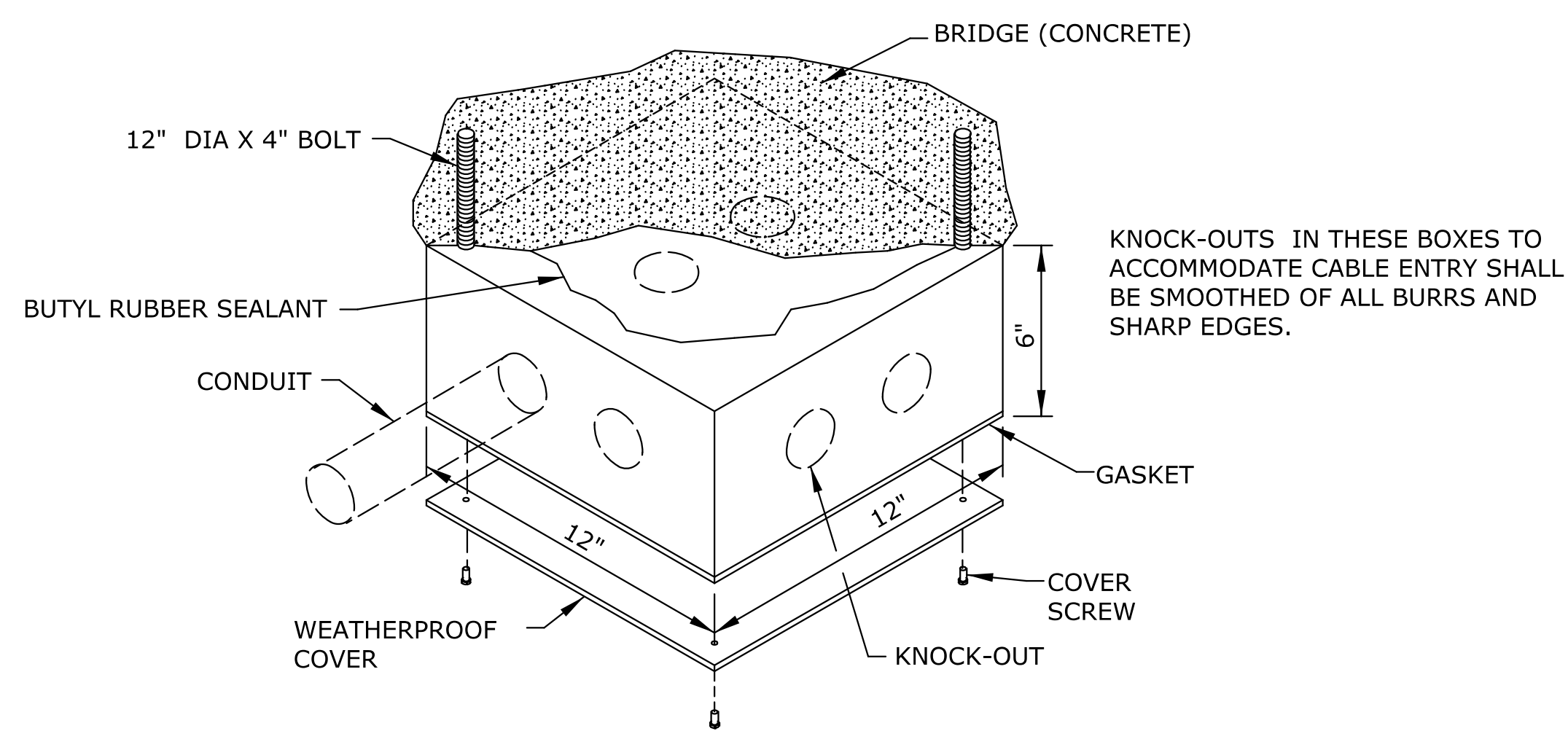
**FIBER OPTIC TRENCH DETAIL**

FIBER OPTIC CONDUIT MARKERS TO BE PLACED AT:

- BEGIN AND END OF BACKBONE/BRANCH CONDUIT RUNS OVER 100 FT
- EVERY 500 FT FOR BACKBONE/BRANCH CONDUIT RUNS ADJACENT TO R/W
- BEGIN AND END OF CONDUIT RUNS ON STRUCTURE
- AT SPLICE VAULTS (IF NOT A TERMINATION POINT ALREADY)
  - ADD 1 ORANGE BAND TO MARKER IF A SPLICE VAULT WITH SLACK COIL
  - ADD 2 ORANGE BANDS TO MARKER IF A SPLICE VAULT WITH SLACK COIL AND A SPLICE ENCLOSURE
  - ORANGE BAND SHALL BE 3" INDUSTRIAL TAPE OR APPROVED EQUAL

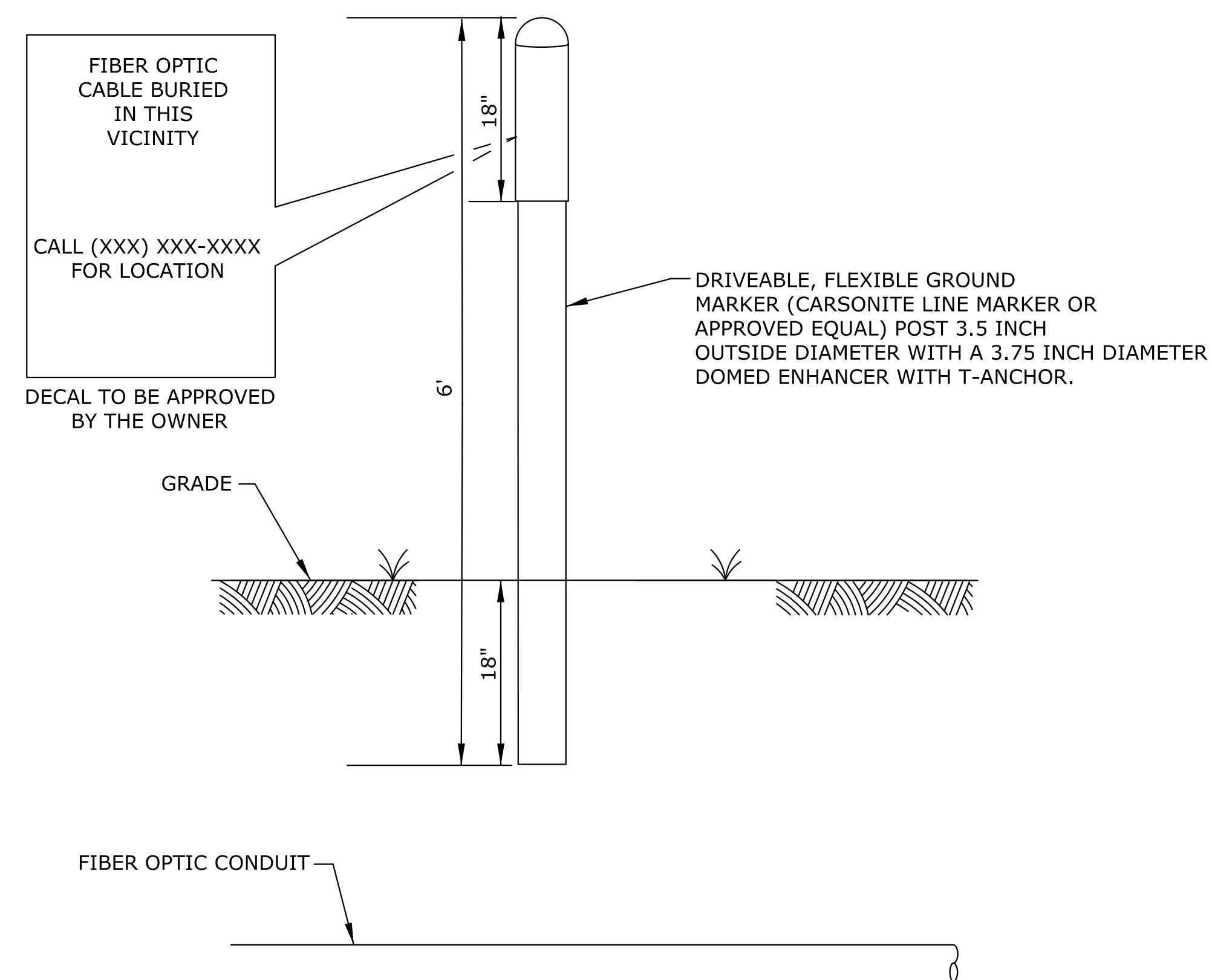


**TRENCH DETAIL (NON FIBER)**



THE JUNCTION BOX IS TO BE ATTACHED TO THE BRIDGE. THE CONTRACTOR SHALL DRILL TWO HOLES IN THE BOTTOM OF THE BOX AND BOLT THE JUNCTION BOX TO THE BRIDGE AT THE INSERTS PROVIDED. BOLTS SHALL BE 12 IN DIA. BY 4 IN LONG AND SHALL CONFORM TO ASTM A325. A WASHER SHALL BE INSTALLED BETWEEN THE BOLT HEAD AND BOTTOM OF THE BOX.

**ABOVE GROUND JUNCTION BOX**



**FIBER OPTIC CONDUIT ABOVE GROUND DELINEATOR DETAIL**

**GENERAL NOTES:**

- ALL UTILITY CROSSINGS UNDER ROADWAY SHOULD HAVE A MINIMUM OF 5 FT OF COVER BELOW CROWN GRADE OR 3 FT COVER BELOW DITCH GRADE.
- REFER TO THE KDOT UTILITY ACCOMMODATION POLICY FOR BRIDGE ATTACHMENT DETAILS.

NO.	DATE	REVISIONS	BY	APP'D
KANSAS DEPARTMENT OF TRANSPORTATION				
CONDUIT STRUCTURAL ATTACHMENT AND TRENCH DETAILS				
ITS-DIO VERSION DATE: 05-29-17				
DESIGNED	DESIGNED	QUANTITIES	TRACED	
DESIGN CK.	DETAIL CK.	QUAN. CK.	TRACE CK.	