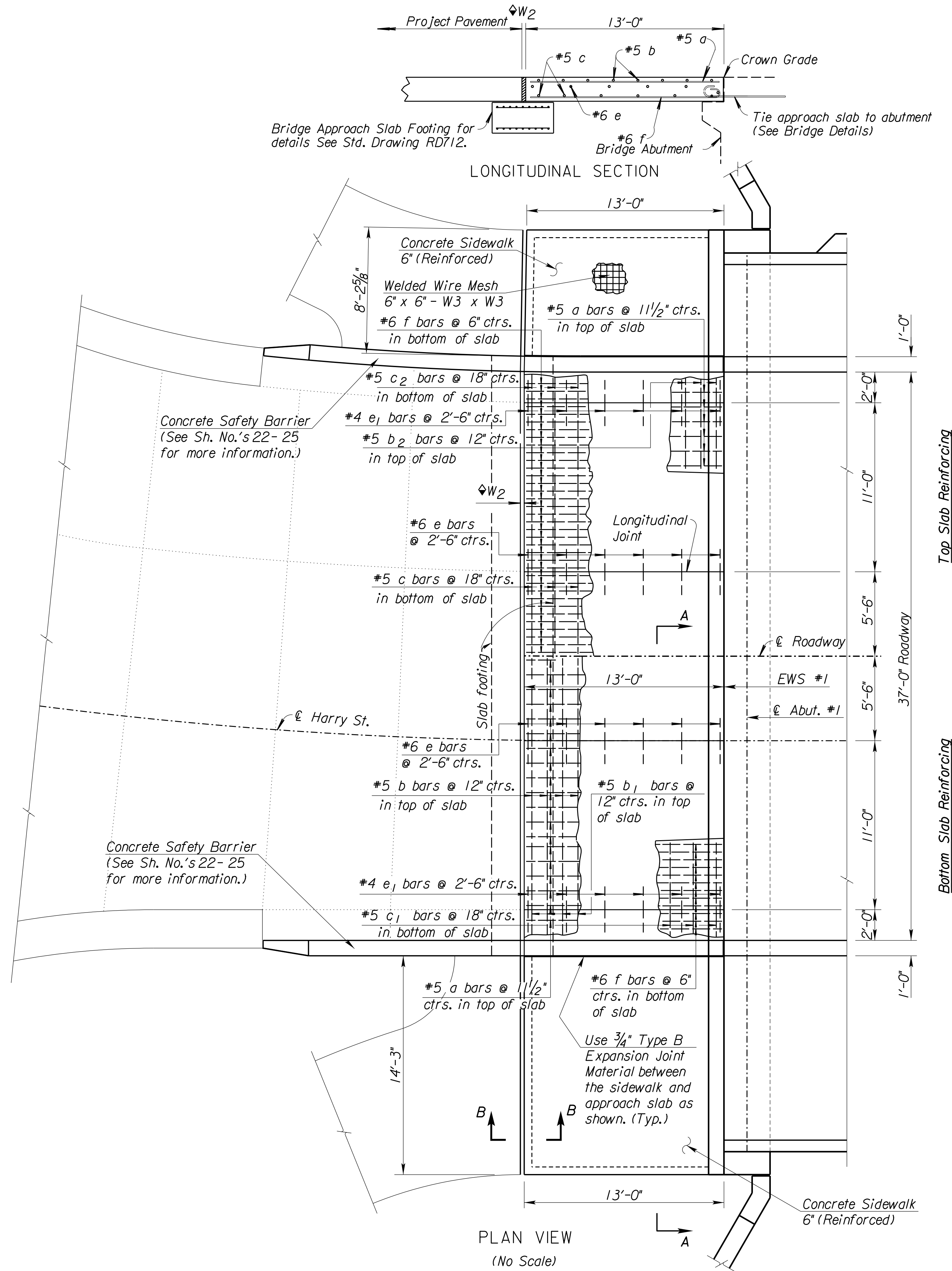


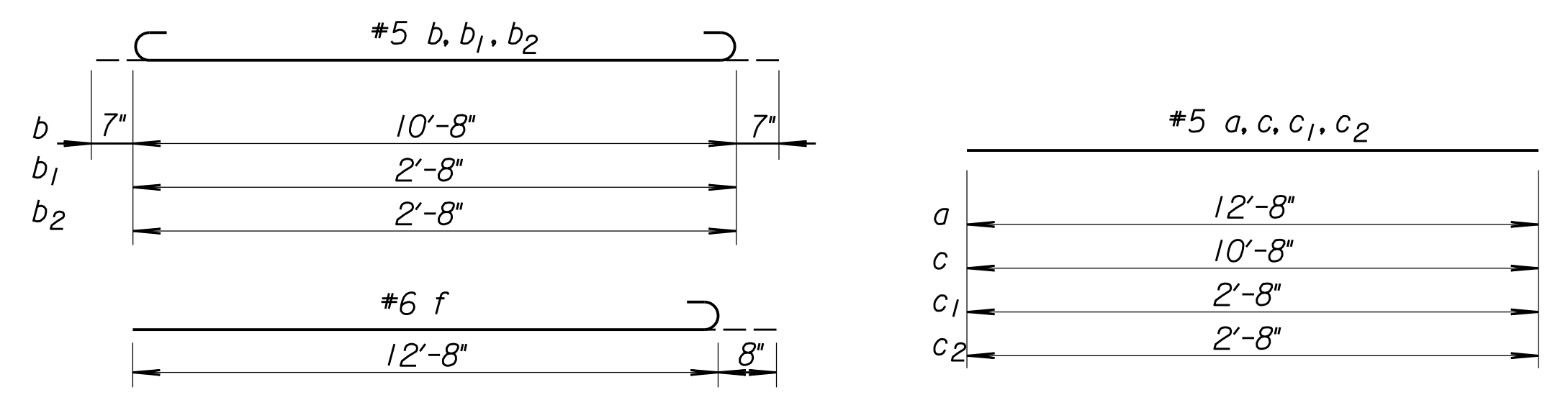
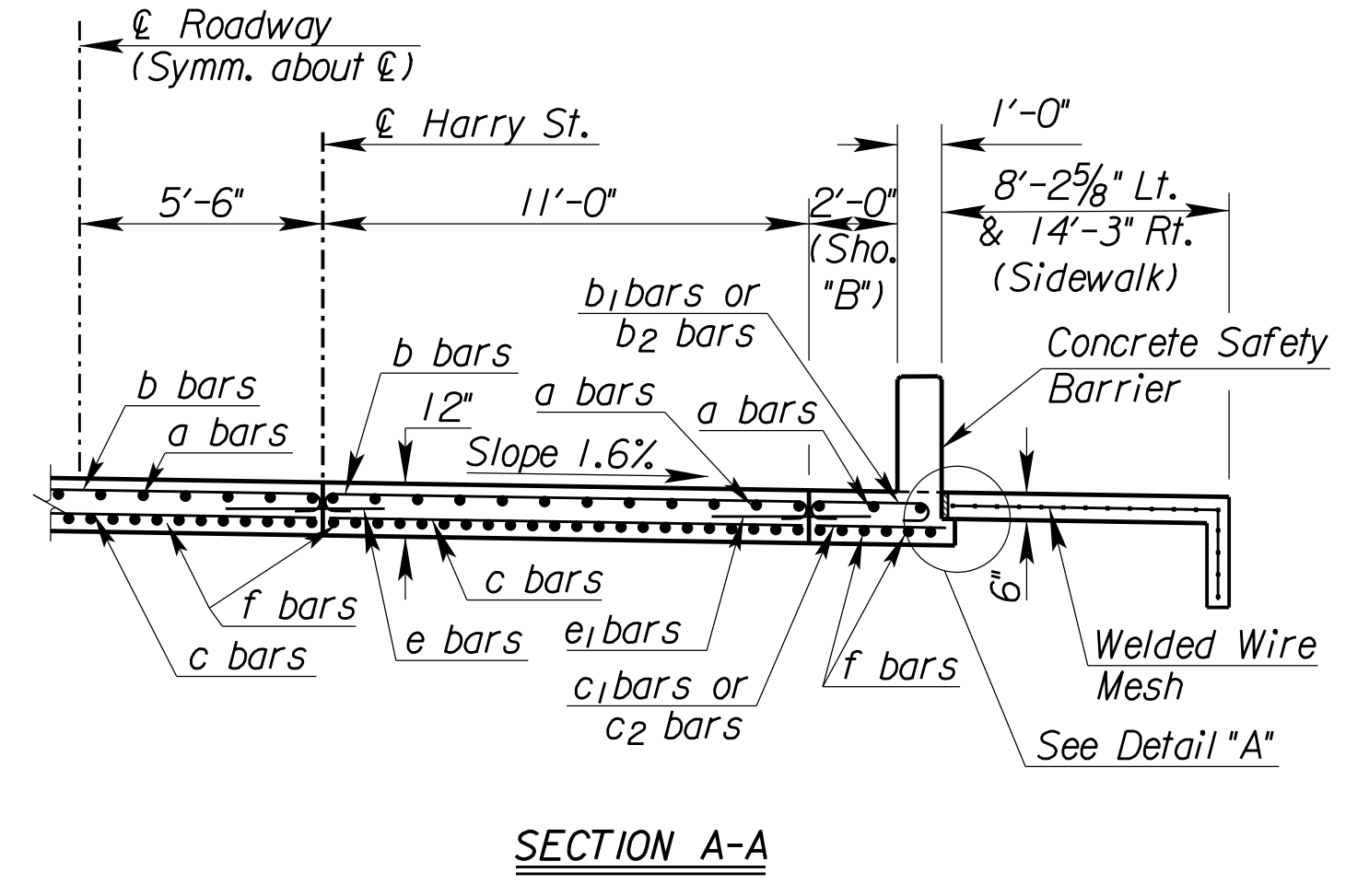
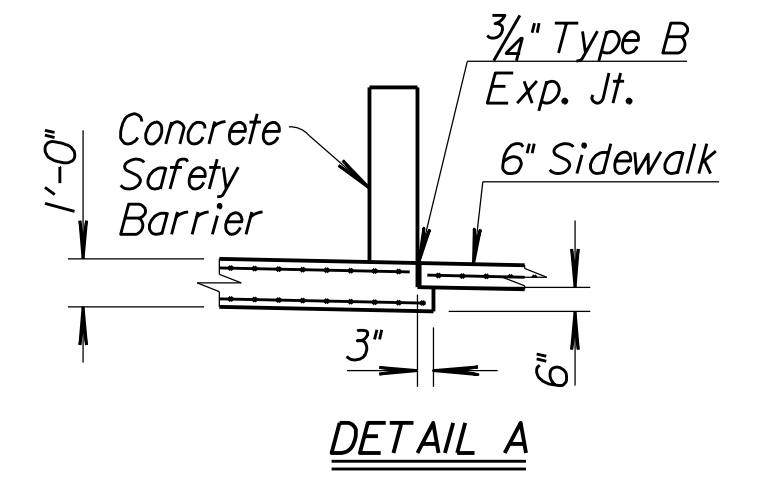
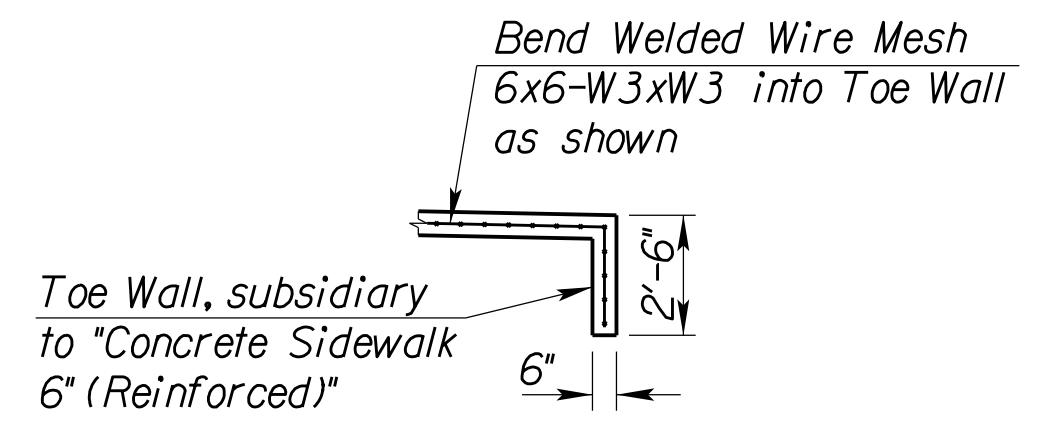
Plotted : 10/3/2019 2:11:45 PM File : T:\35838A-COW_HarryStBridge\Cadd\Sheets\Standards\KDOT\838APR01.dgn



∇ W₂ for Expansion Joint width and details See Standard Drawing RD712.

GENERAL NOTE

Concrete Bridge Approach shall be paid for as Sq. Yds. of Concrete Pavement (12" Unif.) (AE)(Br App) and includes all work and materials required to construct the approach slab as shown on this sheet. This does not include the Concrete Sidewalk 6" (Reinforced).
 All work and materials required for installation of expansion joints shall be subsidiary to this bid item.
 At the Contractor's option #4x3'-0" tie bars @ 15" centers may be substituted for the #6 e bars at 2'-6" centers.
 All reinforcing steel shall be epoxy coated.
 See Sh. #20 for details of joints, welded wire reinforcement, and edge curb.
 Standard reinforcing bar hooks in accordance with the latest ACI specifications shall be used throughout.



BILL OF MATERIALS										
Bar Schedule										
Bar No.	a	b	b ₁	b ₂	c	c ₁	c ₂	e	e ₁	f
Size	#5	#5	#5	#5	#5	#5	#5	#6	#4	#6
Length	12'-8"	1'-10"	3'-10"	3'-10"	10'-8"	2'-8"	2'-8"	3'-0"	3'-0"	13'-4"
Reinforcing Steel (Grade 60) (Epoxy Coated)										3,131 lbs.
Concrete Pavement (12" Unif.) (AE)(Br. App.)										56.3 Sq. Yds.
Concrete Sidewalk 6" (Reinforced)										290.1 Sq. Ft.
Expansion Joint Membrane Sealant										39.0 Lin. Ft.
Bridge Approach Slab Footing										11.6 Cu. Yds.

Note: Quantities listed for West approach slab only. See "Concrete Bridge Approach Pavement (East)" sheet for East approach slab quantities. Reinforcing steel, and joint lengths shown for information only.



HARRY STREET BRIDGE OVER ARKANSAS RIVER

CONCRETE BRIDGE APPROACH PAVEMENT (WEST)

STRUCTURE NO. 43040087630AR40

NO.	DATE	DESCRIPTION