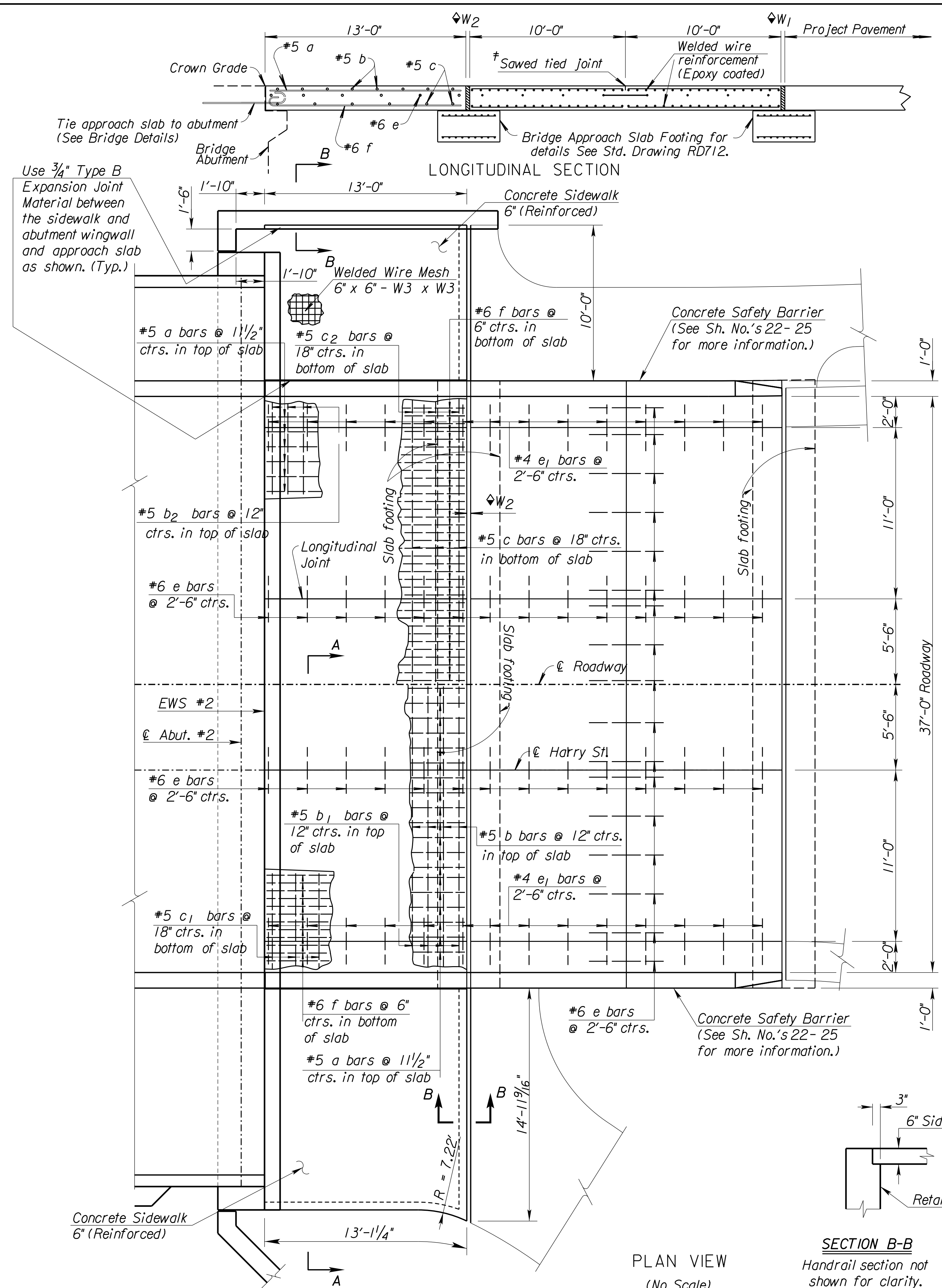


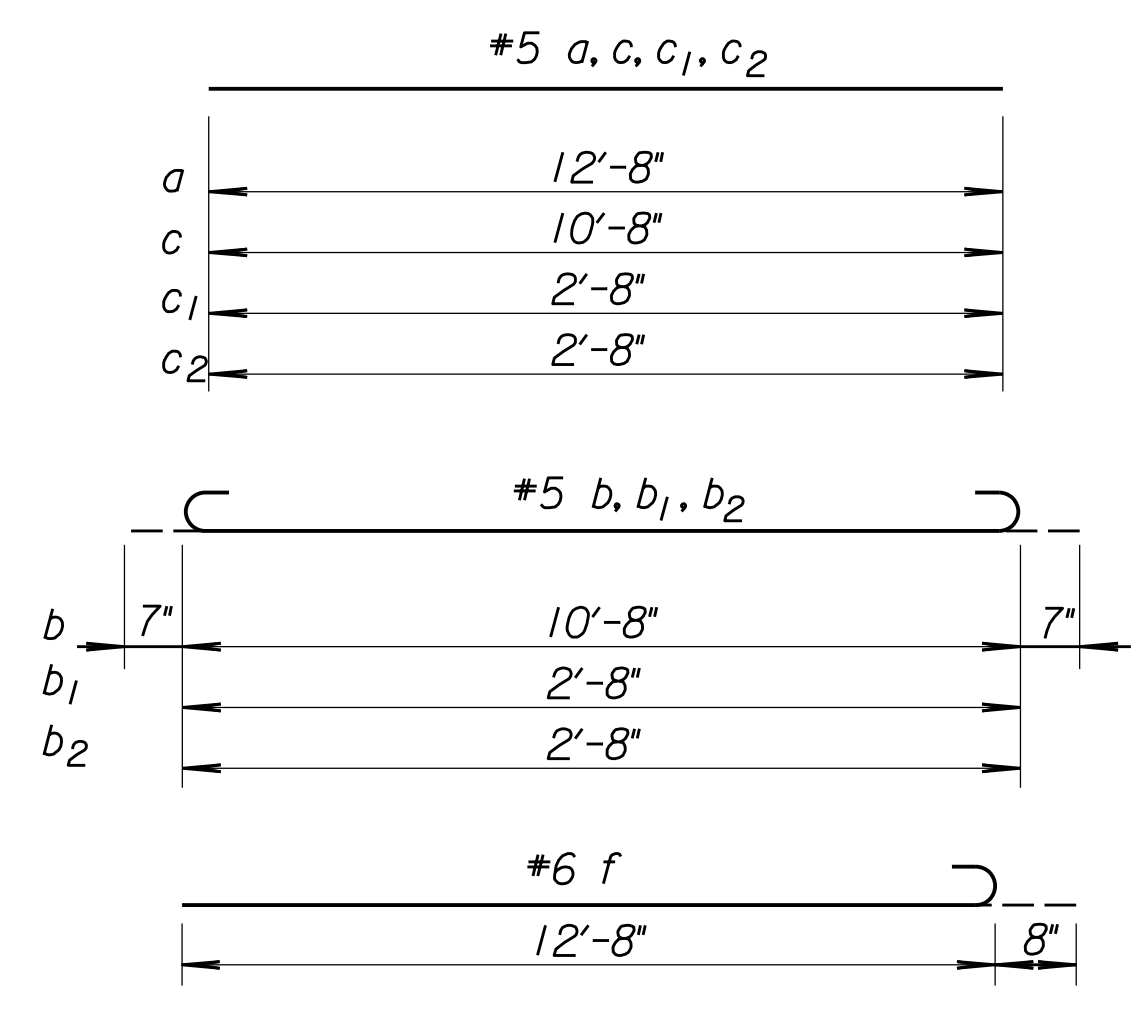
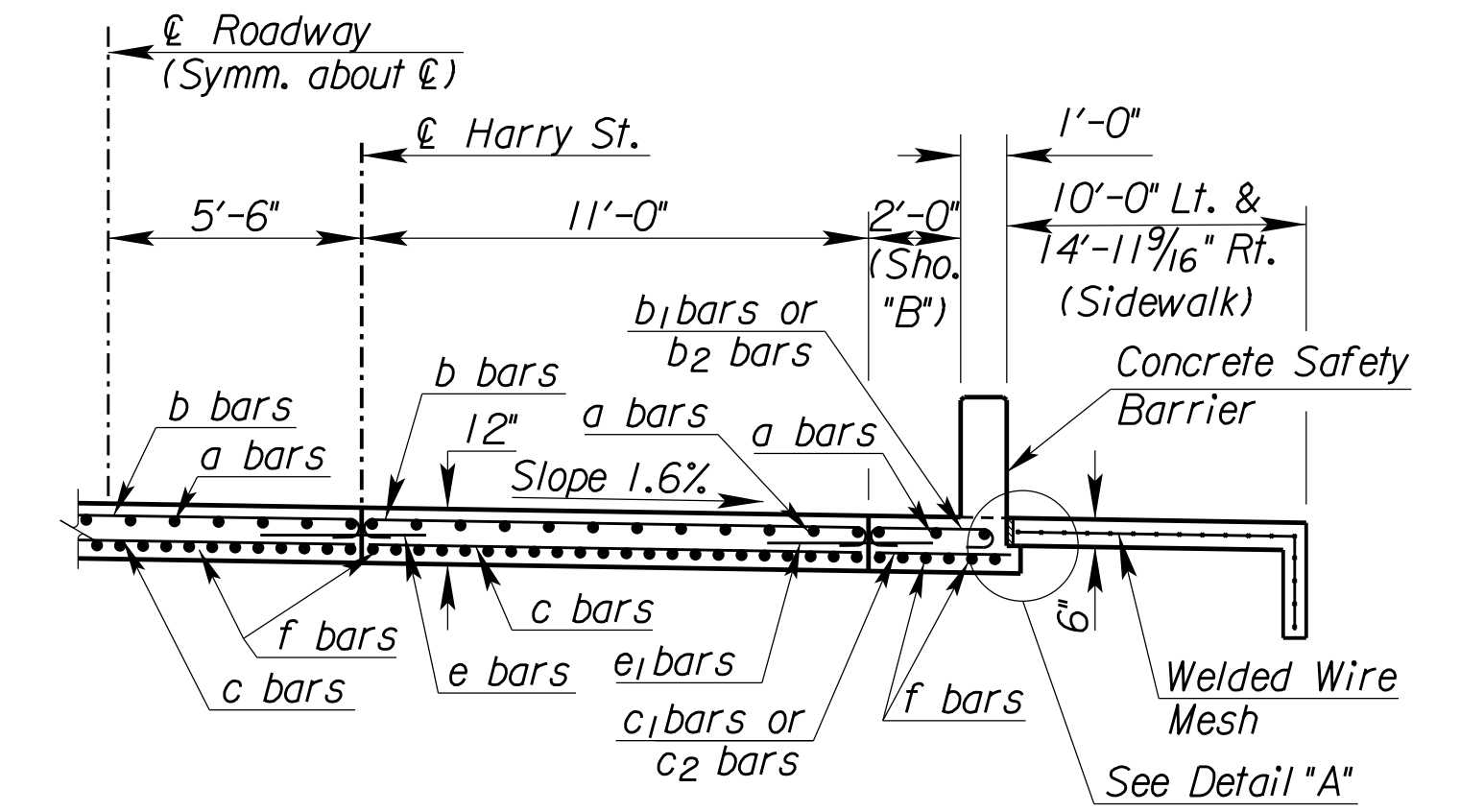
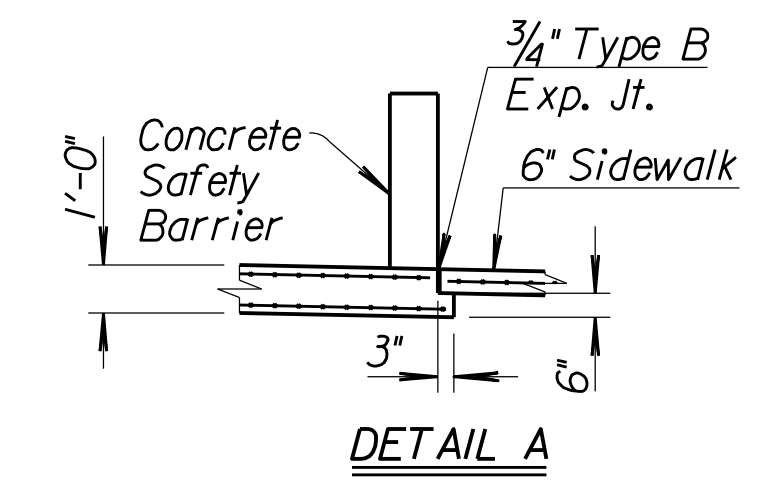
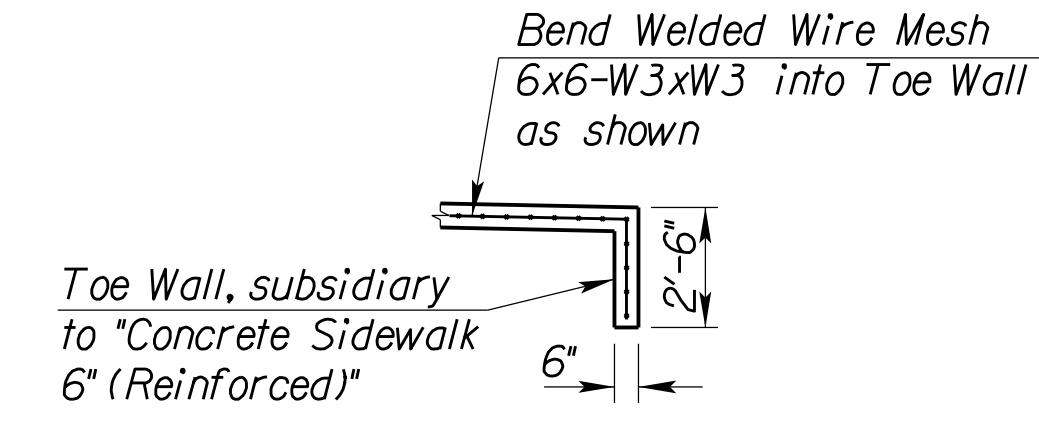
Plotted: 10/3/2019 2:11:49 PM File: T:\35838A-COW_HarryStreetBridge\Cadd\Sheets\Standards\KDOT\838APR02.dgn



W₁ and W₂ for Expansion/Pressure Relief Joint width and details See Standard Drawing RD712.
 † Contractor has the option of substituting a Tied Keyed Construction Joint.

GENERAL NOTE

Concrete Bridge Approach shall be paid for as Sq. Yds. of Concrete Pavement (12" Unif.)(AE) (Br App) and includes all work and materials required to construct the approach slab as shown on this sheet. This does not include the Concrete Sidewalk 6" (Reinforced).
 All work and materials required for installation of expansion joints and pressure shall be subsidiary to this bid item.
 At the Contractor's option #4x3'-0" tie bars @ 15" centers may be substituted for the #6 e bars at 2'-6" centers.
 All reinforcing steel shall be epoxy coated.
 See Sh. #20 for details of joints, welded wire reinforcement, and edge curb.
 Standard reinforcing bar hooks in accordance with the latest ACI specifications shall be used throughout.



BILL OF MATERIALS										
Bar Schedule										
Bar	a	b	b ₁	b ₂	c	c ₁	c ₂	e	e ₁	f
No.	42	39	13	13	27	9	9	45	28	78
Size	#5	#5	#5	#5	#5	#5	#5	#6	#4	#6
Length	12'-8"	11'-10"	3'-10"	3'-10"	10'-8"	2'-8"	2'-8"	3'-0"	3'-0"	13'-4"
Reinforcing Steel (Grade 60) (Epoxy Coated)	3,312 lbs.									
Concrete Pavement (12" Unif.)(AE)(Br. App.)	143.0 Sq. Yds.									
Concrete Sidewalk 6" (Reinforced)	317.1 Sq. Ft.									
Expansion Joint Membrane Sealant	39.0 Lin. Ft.									
Pressure Relief Joint Membrane Sealant	39.0 Lin. Ft.									
Bridge Approach Slab Footing	23.1 Cu. Yds.									

Note: Quantities listed for East approach slab only. See "Concrete Bridge Approach Pavement (West)" sheet for West approach slab quantities. Reinforcing steel and joint lengths shown for information only.

NO.	DATE	DESCRIPTION