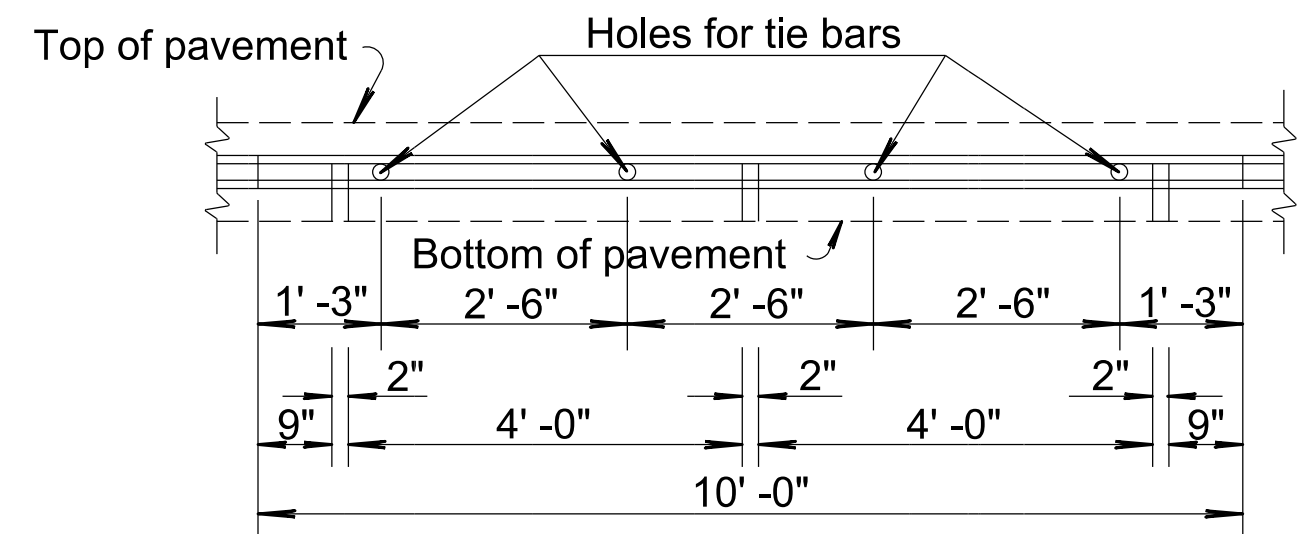
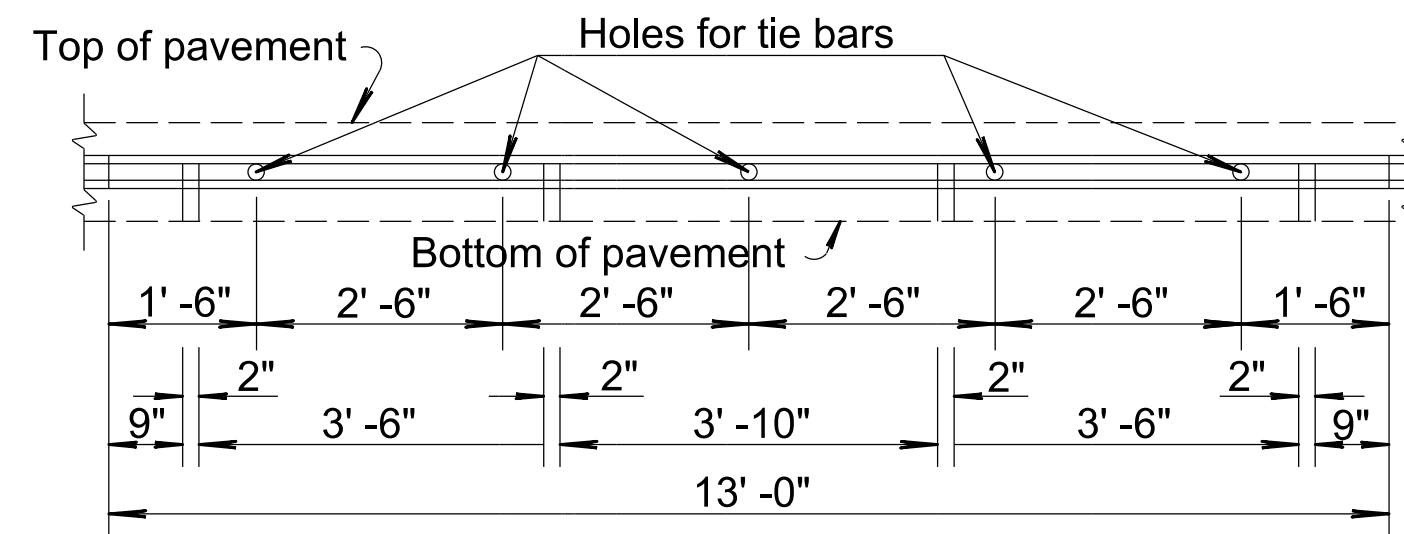


STATE	PROJECT NO.	YEAR	SHEET NO.	TOTAL SHEETS
KANSAS	472-85359	2019	20	135



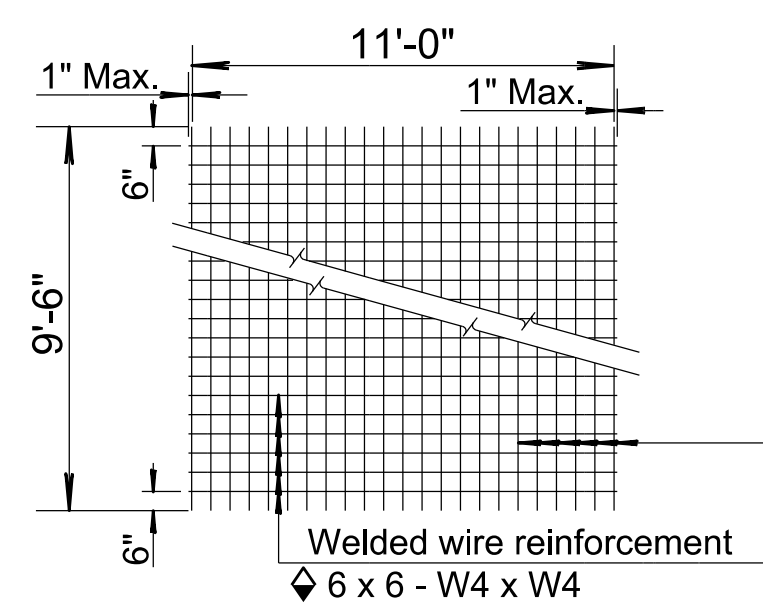
To be used only against forms. Shall not extend through contraction joints.

METAL STRIP FOR LONGITUDINAL CONSTRUCTION JOINT (10'-0")



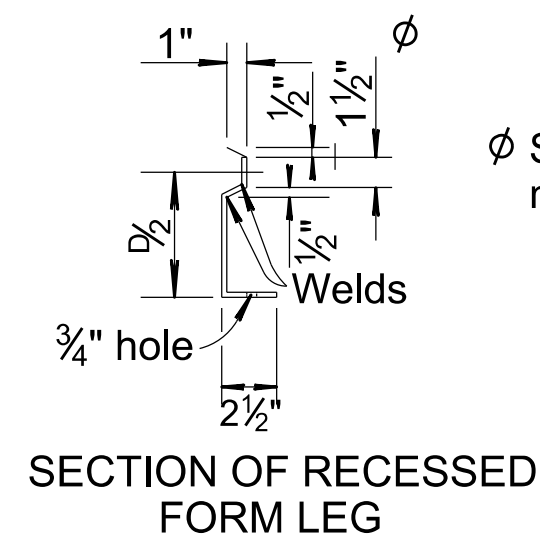
To be used only against forms. Shall not extend through contraction joints.

METAL STRIP FOR LONGITUDINAL CONSTRUCTION JOINT (13'-0")



TYPICAL SHEET OF WELDED WIRE REINFORCEMENT FOR SPECIAL BRIDGE APPROACH PAVEMENT

Note: Epoxy coated #3 bars longitudinally @ 12" ctrs. & #3 bars transversely @ 18" ctrs. may be substituted for each layer of epoxy coated welded wire reinforcement.

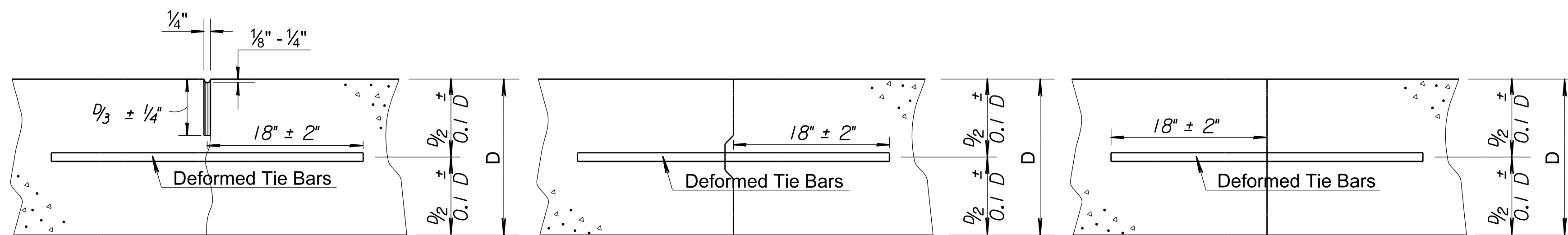


Ø Snap-in leg or other approved designs may be used in lieu of welded leg.



DETAIL OF LAP FOR WELDED WIRE REINFORCEMENT

The lap shall extend beyond the first transverse or bag wire of each sheet. The sheet shall be wired securely at the edges and at intervals not to exceed 2'-6" for the full width of the sheet. Approximate weight of welded wire reinforcement = 58 lbs. per 100 sq. ft. Other methods for fastening the sheets of welded wire reinforcement at the laps may be used with the approval of the Engineer.



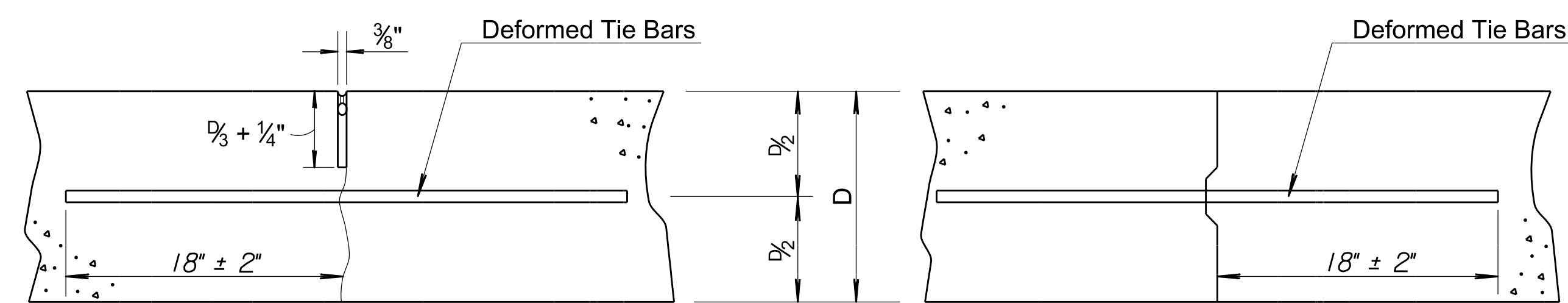
Tied Non-Keyed

Tied Keyed Construction

Tied Butt Construction

LONGITUDINAL JOINTS

Note: For longitudinal construction joints the contractor has the option of using either the keyed or butt type. Place deformed tie bars mid-depth of the shoulder.



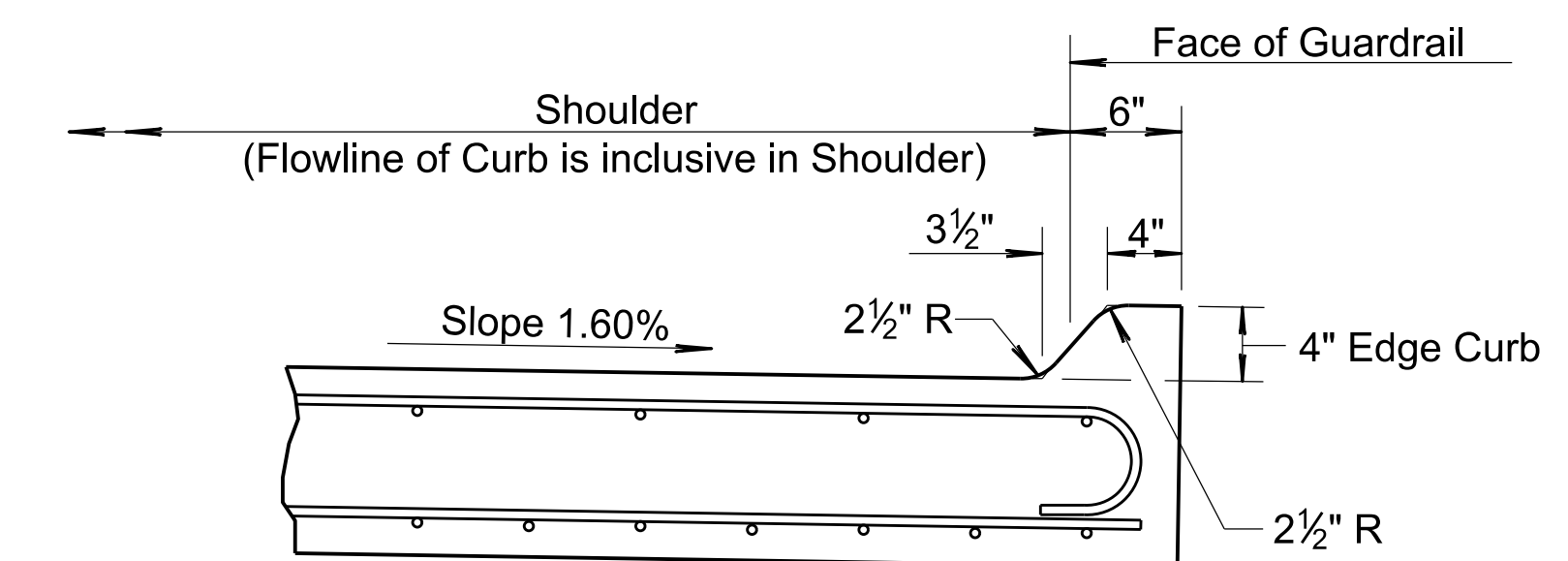
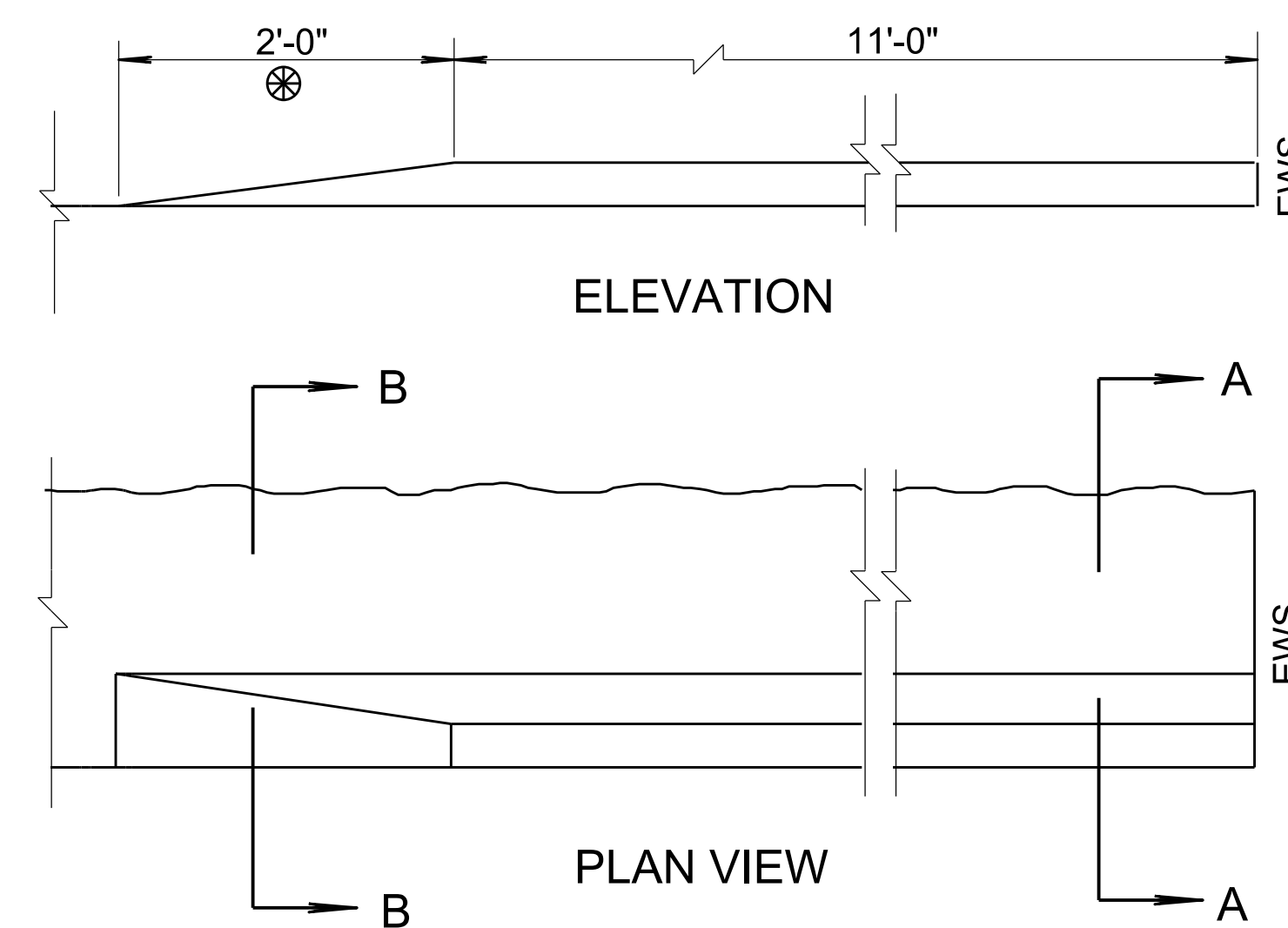
Monolithic Pour

Construction Joint

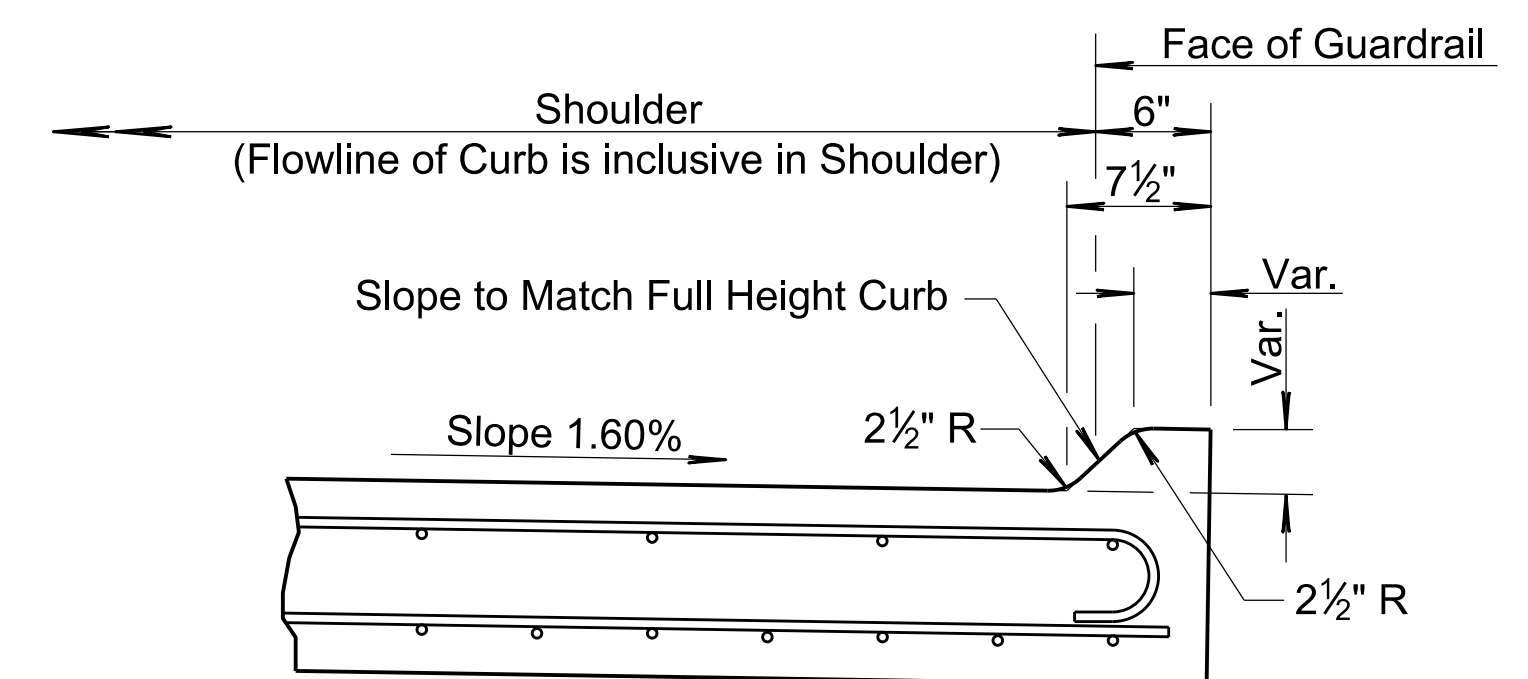
TRANSVERSE JOINTS

Note: A construction joint is required when the concrete placement has been interrupted for a substantial length of time or at the end of a day's placement.

⊗ No 4" Curb transition when adjacent to Flume Inlet.



SECTION A-A



SECTION B-B

13	5-17-13	Revised Note, Longitudinal Joints	S.W.K.	J.O.B.
12	5-14-09	Pres. Relief Jt. to RD712/lie bar lab.	S.W.K.	J.O.B.
11	10-23-08	Revised Sec. A-A and Sec. B-B	S.W.K.	J.O.B.
10	10-3-07	Add. manufacturer jt. size recom'd.	S.W.K.	J.O.B.
NO.	DATE	REVISIONS	BY	APPD

KANSAS DEPARTMENT OF TRANSPORTATION

MISCELLANEOUS DETAILS FOR CONCRETE BRIDGE APPROACH PAVEMENT

RD711		APPD, James O. Brewer	
DESIGNED	10-23-13	QUANTITIES	TRACED Bowser
DESIGN CK.	DETAIL CK.	QUAN. CK.	TRACE CK. King

Drawn By: Plotted: 10/3/2019 File: T:\35838A-COW_HarryS\Bridg\cadd\Sheets\Standards\KDOT\1838RD711.dgn