

Plotted : 10/3/2019 2:12:16 PM File : T:\35838A-COW_HarrySBridge\Cadd\Sheets\Drainage\838SWPLN01.dgn

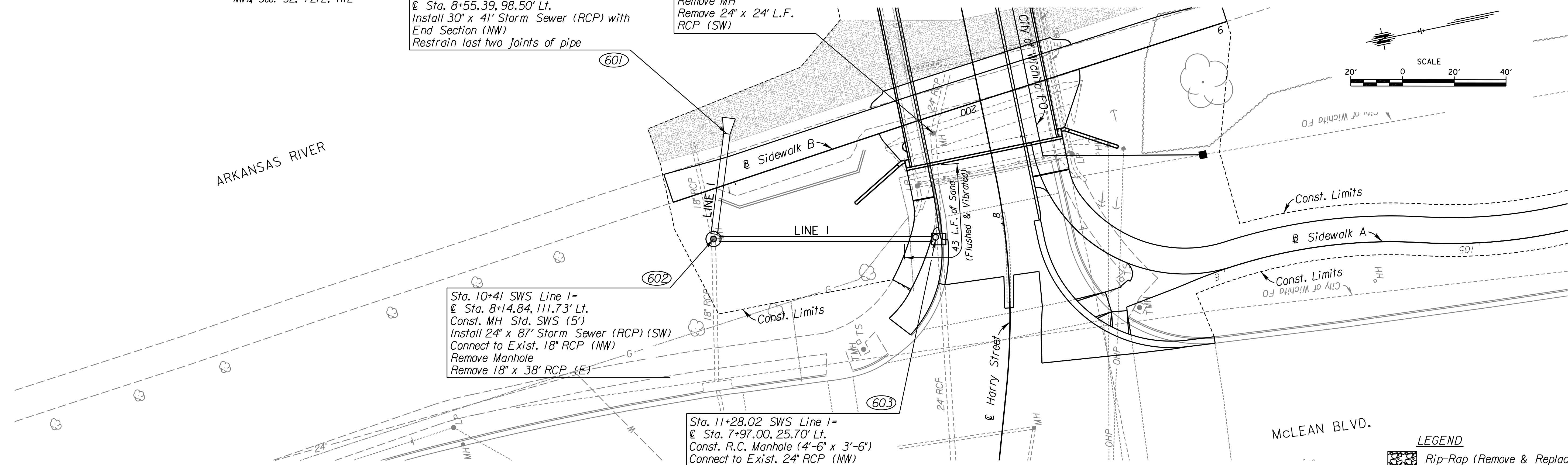
NW¼ Sec. 32, T27E, R1E

Sta. 10+00 SWS Line 1=
 @ Sta. 8+55.39, 98.50' Lt.
 Install 30" x 41' Storm Sewer (RCP) with
 End Section (NW)
 Restrain last two joints of pipe

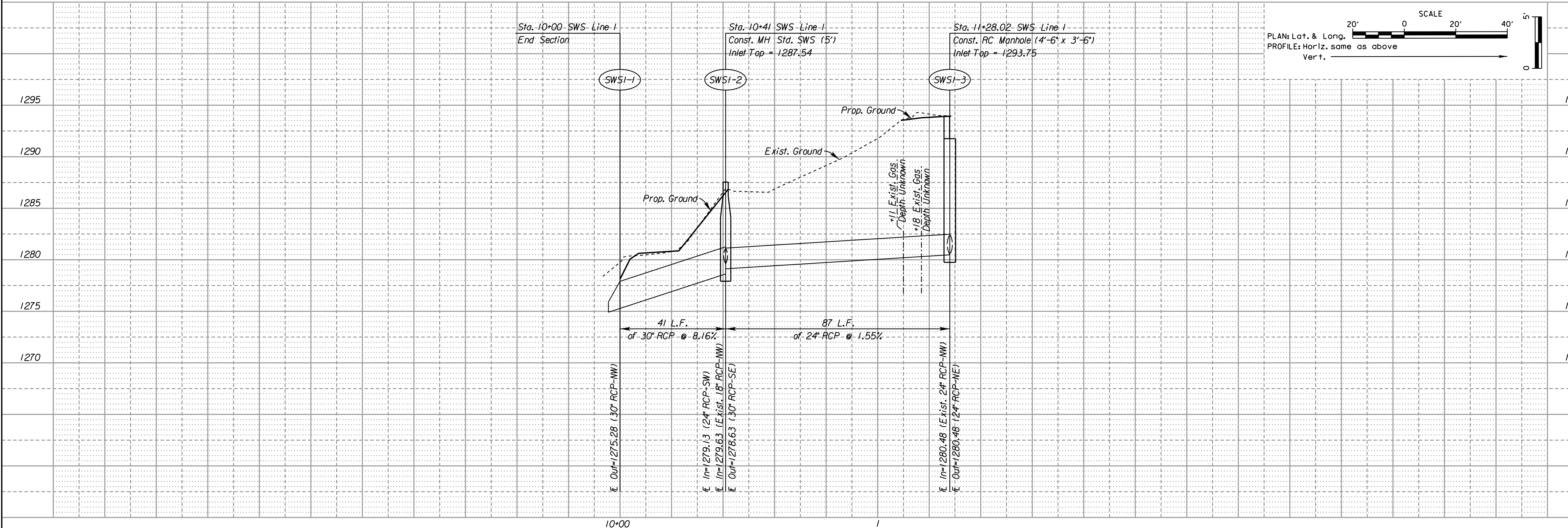
@ Sta. 8+39.63, 20.41' Lt.
 Remove MH
 Remove 24" x 24' L.F.
 RCP (SW)

Sta. 10+41 SWS Line 1=
 @ Sta. 8+14.84, 111.73' Lt.
 Const. MH Std. SWS (5')
 Install 24" x 87' Storm Sewer (RCP) (SW)
 Connect to Exist. 18" RCP (NW)
 Remove Manhole
 Remove 18" x 38' RCP (E)

Sta. 11+28.02 SWS Line 1=
 @ Sta. 7+97.00, 25.70' Lt.
 Const. R.C. Manhole (4'-6" x 3'-6")
 Connect to Exist. 24" RCP (NW)
 Remove 24" x 41' RCP (SE)



LEGEND
 Rip-Rap (Remove & Replace)
 Rip-Rap, Light Stone (18")



SCALE
 PLAN: Lat. & Long.
 PROFILE: Horiz. same as above
 Vert. 1" = 5'



**HARRY STREET BRIDGE
 OVER ARKANSAS RIVER
 STORM WATER SEWER
 LINE 1**

NO.	DATE	DESCRIPTION

PROJ NO: 35838B
 SCALE: AS NOTED
 DATE: .
 DESIGNED BY: .
 DRAWN BY: .
 CHECKED BY: .
 YEAR: 2019
 SHEET NO
 26
 SHEET 26 OF 135