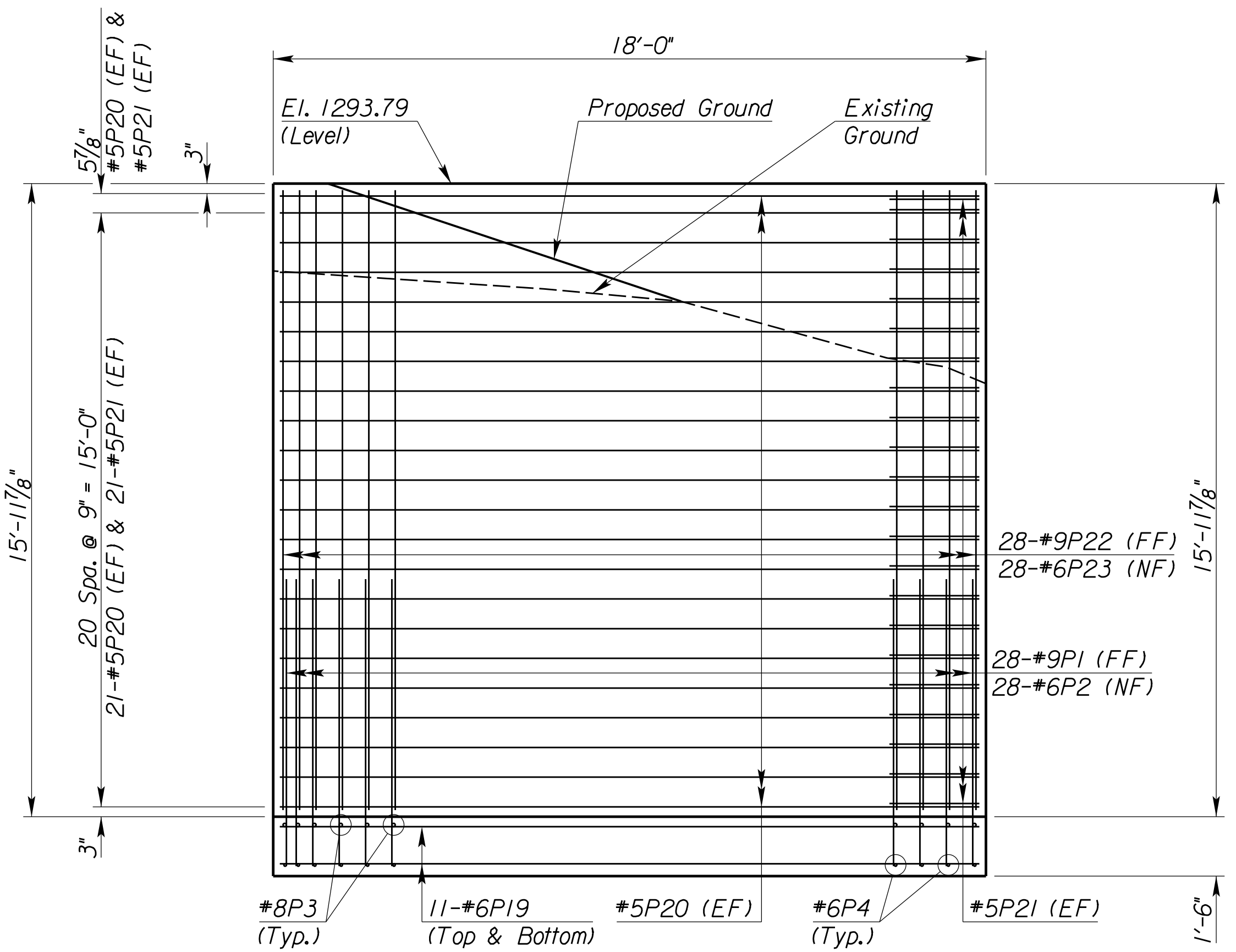
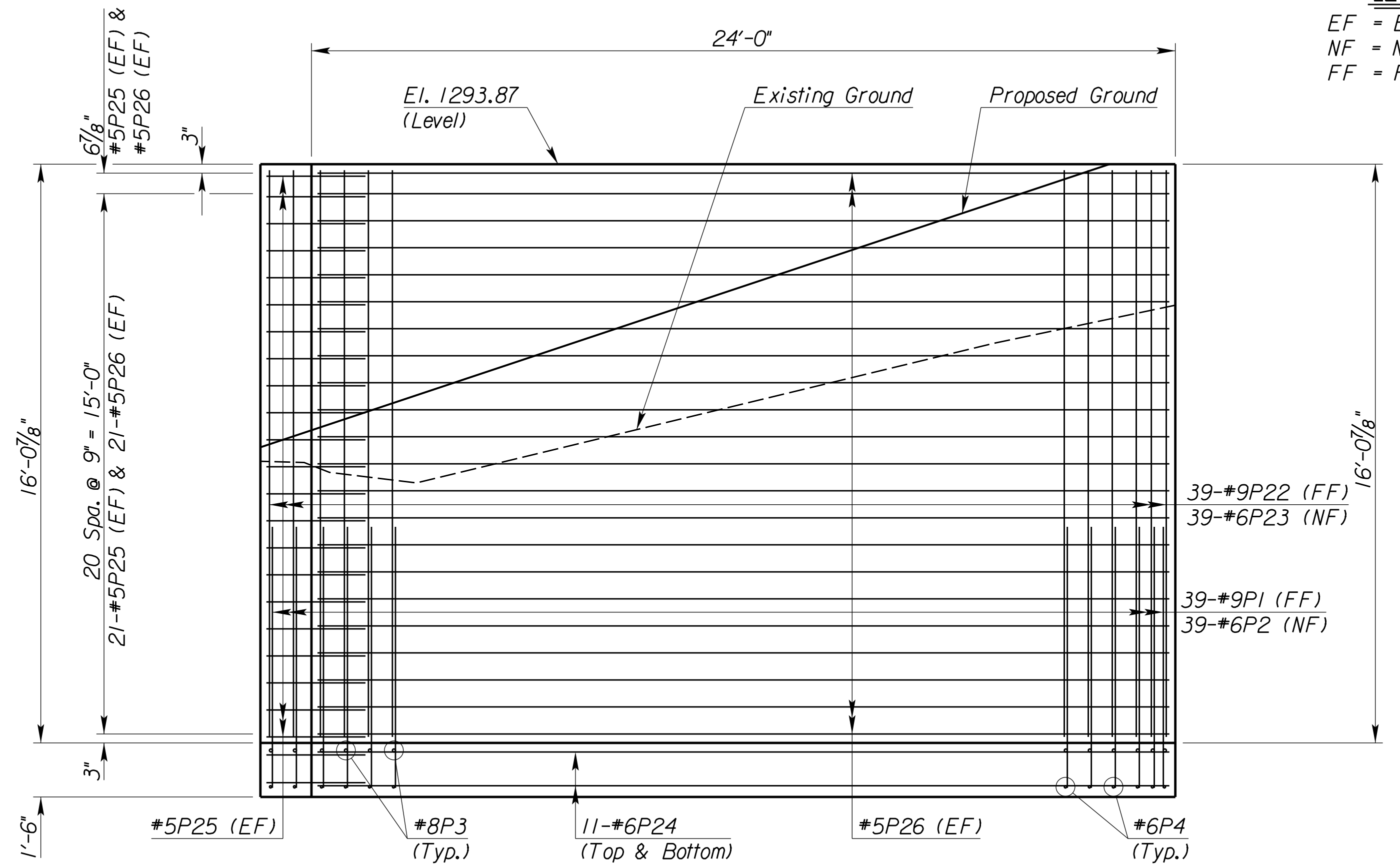


Plotted: 10/3/2019 2:13:05 PM File: T:\35838A-COW_HarryStreetBridge\Cadd\Sheets\Structures\338WALL02.dgn



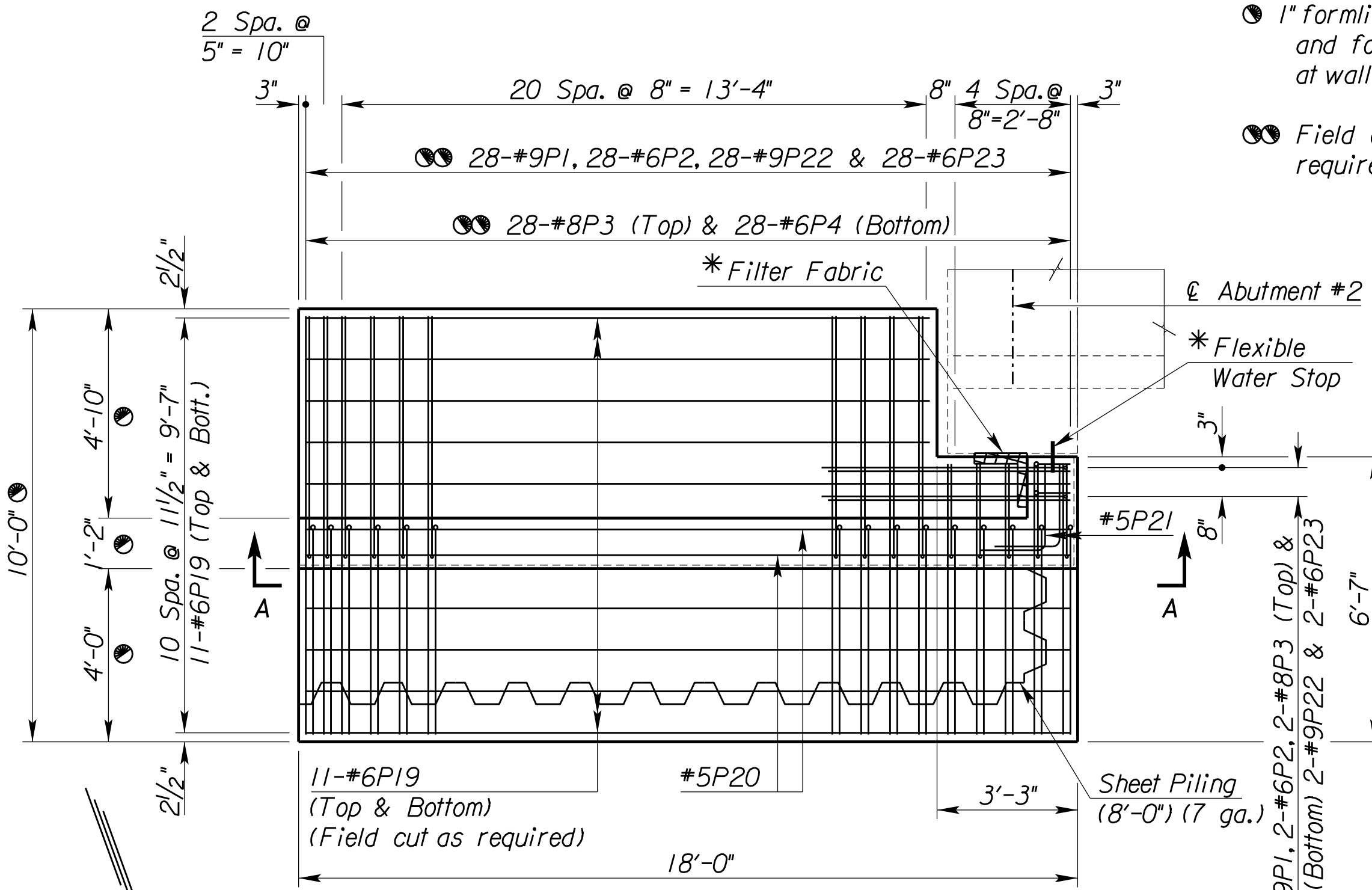
VIEW A-A



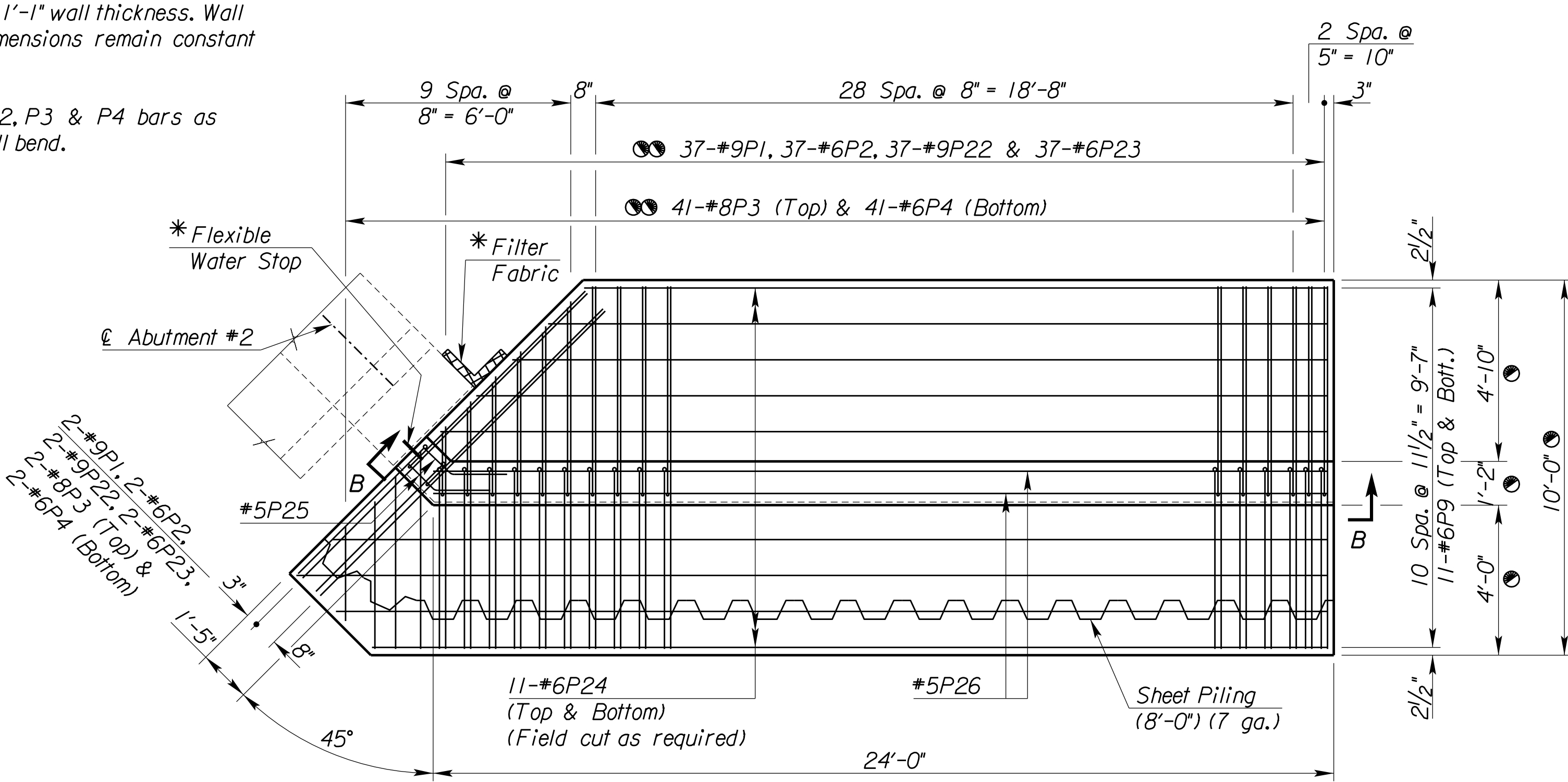
VIEW B-B

LEGEND
 EF = Each Face
 NF = Near Face
 FF = Far Face

NOTES:
 Proposed and Existing Ground lines are in front of wall.
 1" formliner and 1'-1" wall thickness. Wall and footing dimensions remain constant at wall bend.
 Field cut P1, P2, P3 & P4 bars as required at wall bend.



PLAN
(Northeast Corner)



PLAN
(Southeast Corner)

*Flexible Water Stop & Filter Fabric shall be subsidiary to the bid item "Abutment Aggregate Drain".



HARRY STREET BRIDGE OVER ARKANSAS RIVER
RETAINING WALL DETAILS III
STRUCTURE NO. 43040087630AR40

NO.	DATE	DESCRIPTION

PROJ NO: 35838B
 SCALE: AS NOTED
 DATE: --
 DESIGNED BY: --
 DRAWN BY: --
 CHECKED BY: --
 YEAR: 2019
 SHEET NO 38
 SHEET 38 OF 135