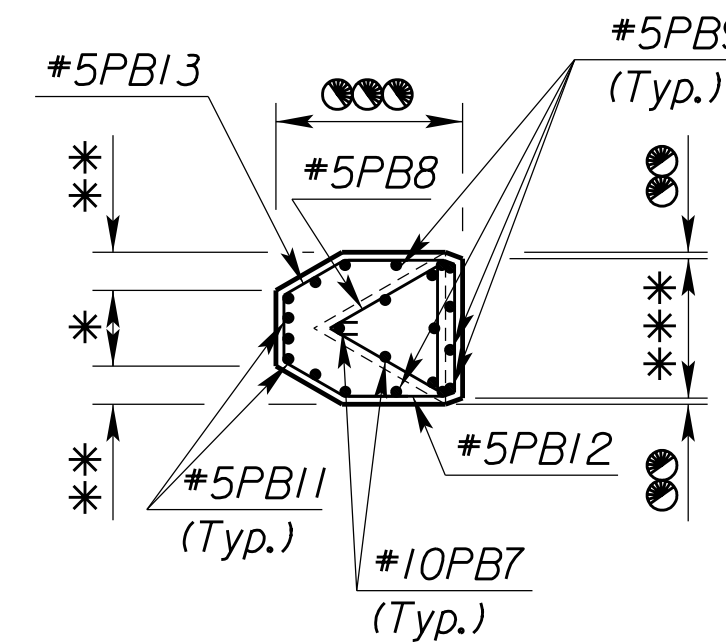
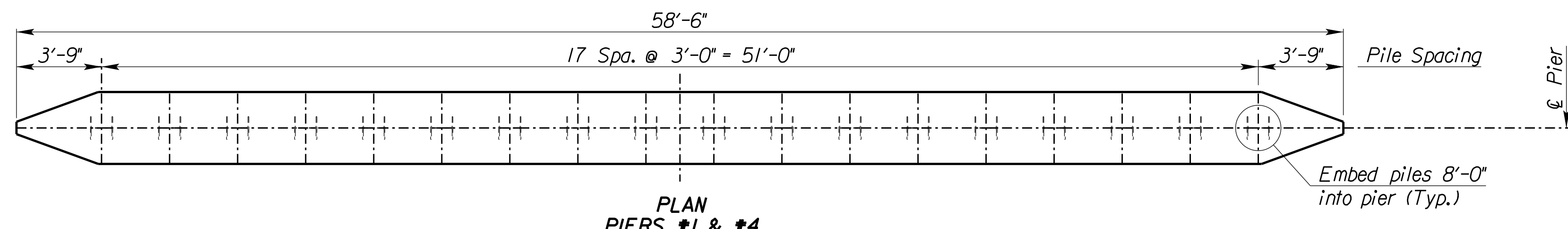
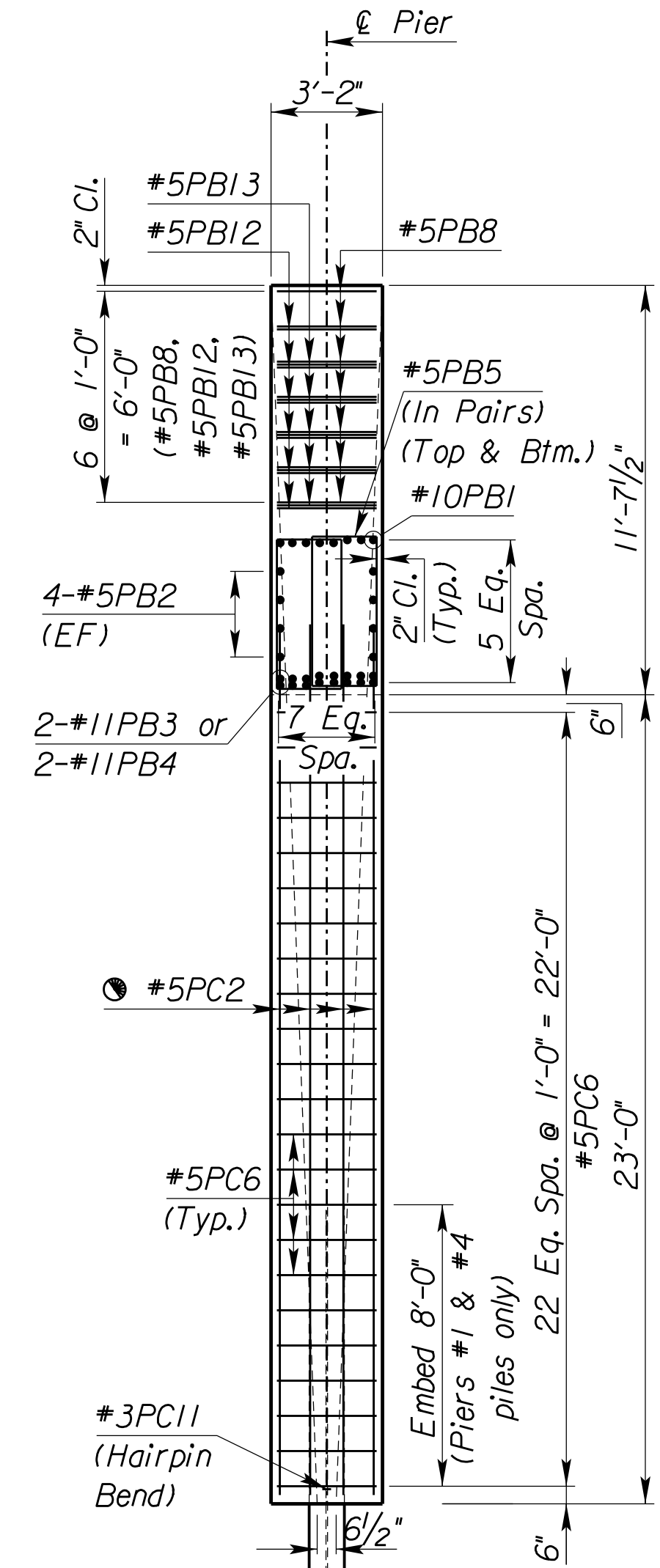
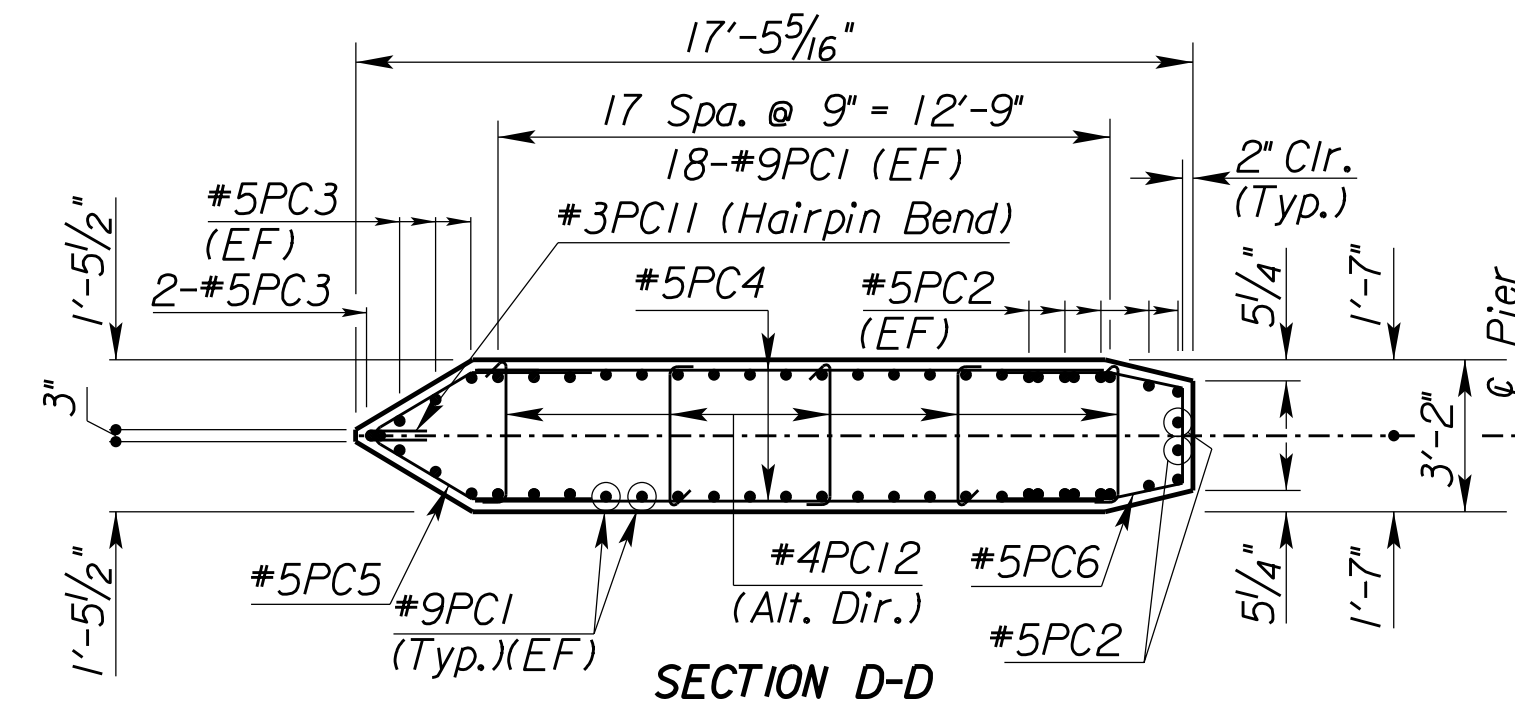
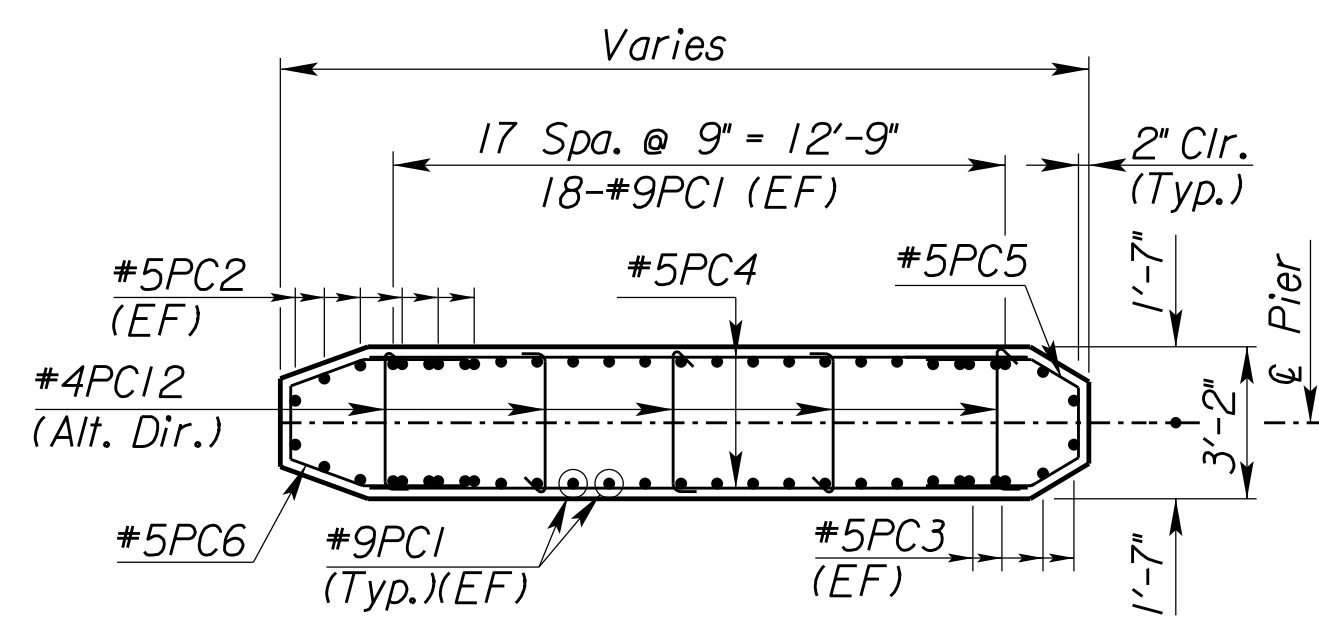
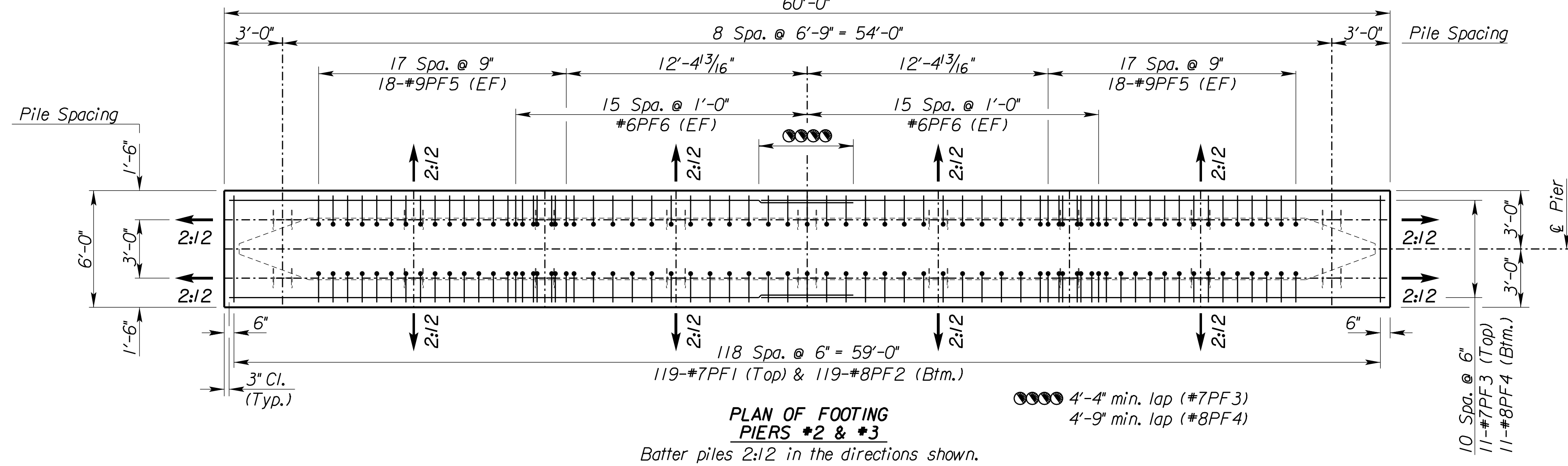


NO.	DATE	DESCRIPTION

PROJ NO:	35838B
SCALE:	AS NOTED
DATE:	
DESIGNED BY:	
DRAWN BY:	
CHECKED BY:	
YEAR:	2019
SHEET NO	57
SHEET	57 OF 135



- * Varies (3'-2" max. & 0" min.)
- ** Varies (1'-7" max. & 0" min.)
- *** Varies (2'-7 1/16" min. & 3'-2" max.)
- Varies (3 3/16" max. & 0" min.)
- Varies (5'-05#8" max. & 2'-9" min.)

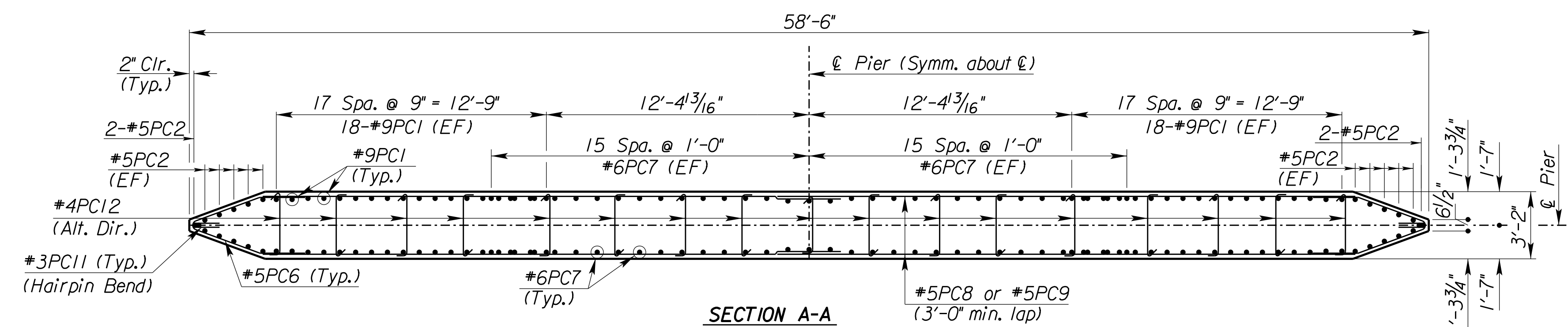
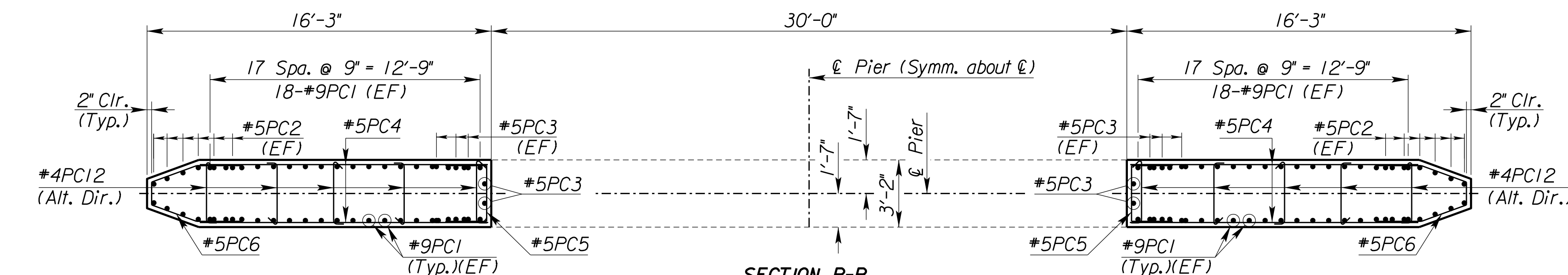


LEGEND
 EF = Each Face
 NF = Near Face
 FF = Far Face
 → = Batter only these piles
 2:1 in direction shown
 ○ = See this sheet for section views.

See "Pier Details I" for Pier dimensions.

NOTE: #5PC2 and #5PC3 bars are spaced 1'-0" max. horizontally around the perimeter of the pier formwork.

SECTION J-J
 Piers #1 & #4 shown. (Piers #2 & #3 similar)
 Main column reinforcing and footing reinforcing not shown for clarity.



Plotted : 10/3/2019 2:14:28 PM File : T:\35838A-COW_HarryStreetBridge\Cadd\Sheets\Structures\35838PIER03.dgn