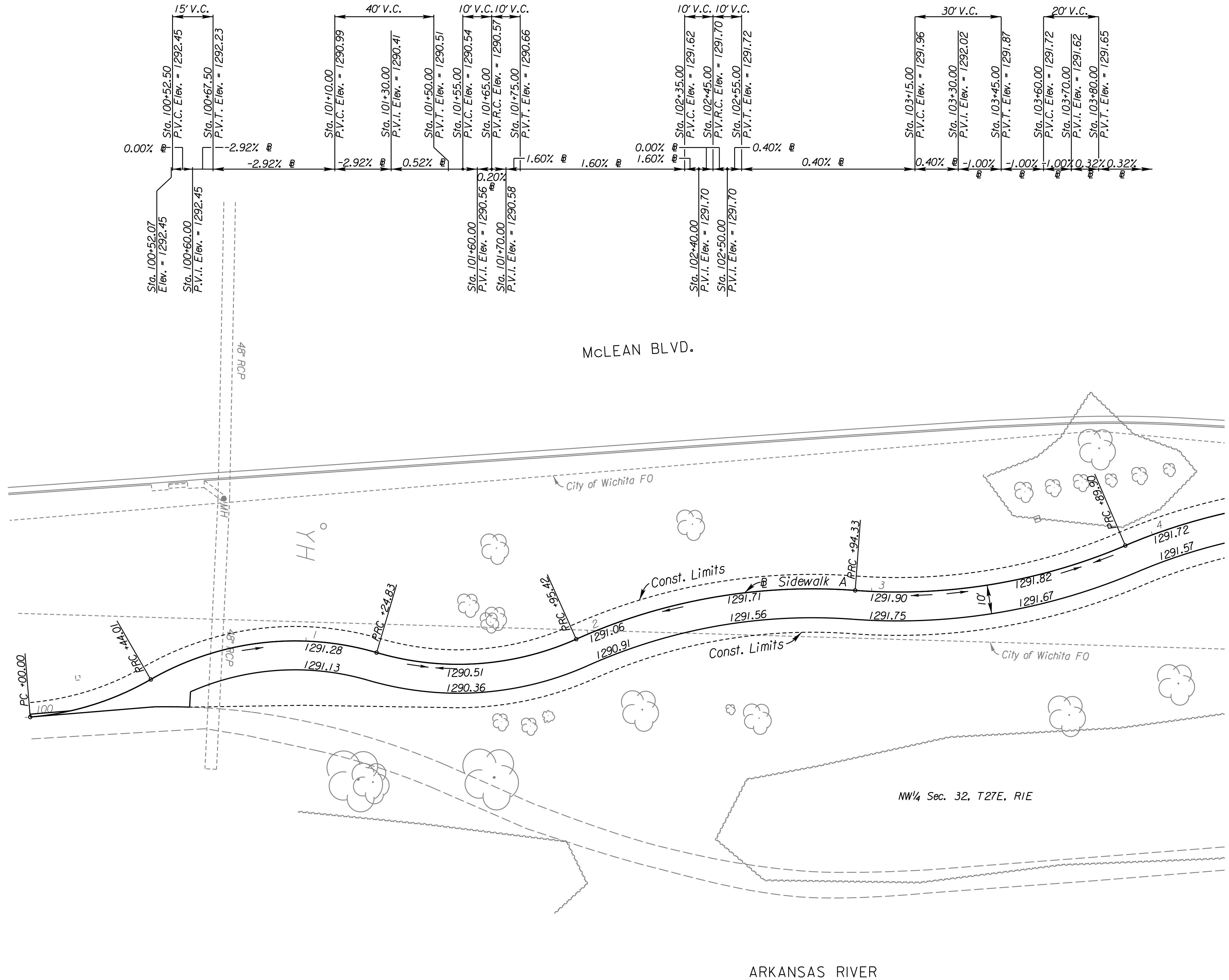


**HARRY STREET BRIDGE  
OVER ARKANSAS RIVER**  
**SIDEWALK A  
STA. 100+00 TO STA. 104+00**

- 402 CURVE DATA**  
P.I. Sta. 100+22.37 (Bk.) = 100+21.64 (Ahd.)  
Δ = 25°13'03" (Lt.) T = 22.37'  
D = 57°17'45" L = 44.01'  
R = 100.00' E = 2.47'
- 404 CURVE DATA**  
P.I. Sta. 100+86.77 (Bk.) = 100+82.07 (Ahd.)  
Δ = 46°18'07" (Rt.) T = 42.76'  
D = 57°17'45" L = 80.82'  
R = 100.00' E = 8.76'
- 406 CURVE DATA**  
P.I. Sta. 101+61.67 (Bk.) = 101+58.58 (Ahd.)  
Δ = 40°26'57" (Lt.) T = 36.84'  
D = 57°17'45" L = 70.59'  
R = 100.00' E = 6.57'
- 408 CURVE DATA**  
P.I. Sta. 102+45.91 (Bk.) = 102+43.84 (Ahd.)  
Δ = 28°20'05" (Rt.) T = 50.49'  
D = 28°38'52" L = 98.91'  
R = 200.00' E = 6.27'
- 410 CURVE DATA**  
P.I. Sta. 103+43.04 (Bk.) = 103+41.19 (Ahd.)  
Δ = 27°22'42" (Lt.) T = 48.71'  
D = 28°38'52" L = 95.57'  
R = 200.00' E = 5.85'



SE Cor. Sec. 29, T27S, R1E  
N 1,677,895.44 E 1,349,575.57  
1. Found 1/2" Iron in Thimble in the Harry  
& Broadway Intersection

SW Cor. Sec. 29, T27S, R1E  
N 1,678,450.74 E 1,644,563.77  
1. Found 1/2" Iron in Thimble in the Harry & Seneca Intersection

- LEGEND**
- Pavement Removal
  - Bridge Removal
  - Curb & Gutter Removal
  - Sidewalk Removal
  - Rip-Rap (Remove & Replace)
  - Rip-Rap, Light Stone (18")

- UTILITIES**
- Communication AT&T
  - City Fiber Optic City of Wichita
  - Stormwater Sewer City of Wichita
  - Water City of Wichita

NO.	DATE	DESCRIPTION

PROJ NO:	35838B
SCALE:	AS NOTED
DATE:	-
DESIGNED BY:	-
DRAWN BY:	-
CHECKED BY:	-
YEAR:	2019
SHEET NO	8
SHEET	8 OF 135