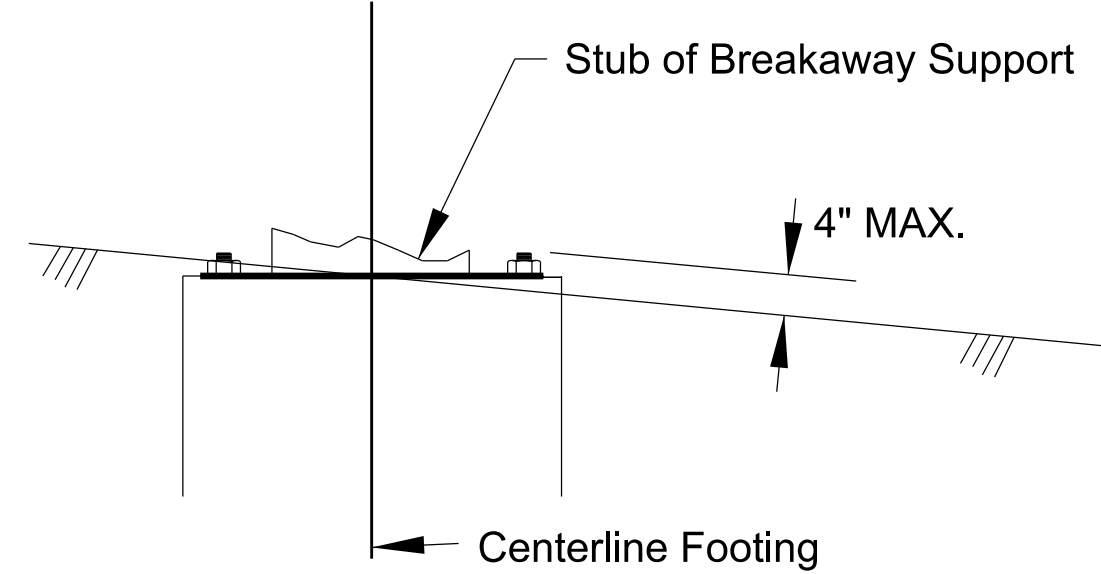


STATE	PROJECT NO.	YEAR	SHEET NO.	TOTAL SHEETS
KANSAS	472-85359	2019	96	135

**GROUNDING NOTE:**

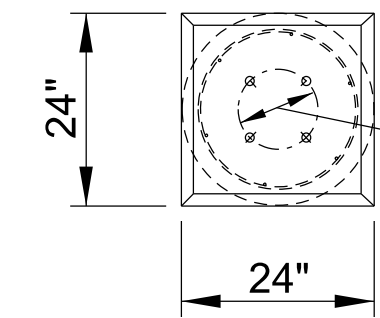
Light standards shall be grounded by means of a No.6 AWG solid bare copper ground wire bolted to the inside of the light standard shaft with a 1½" (inch) grounding nut. Ground wire shall be connected to the copperclad ground rod by means of a ground rod clamp with an exothermic connection.

The 4" (inch) maximum is a requirement of the breakaway criteria in the 2013 Edition of the AASHTO Publication, Standard Specifications for Structural Supports for the Highway Signs, Luminaries and Traffic Signals, and KDOT Special Provision 744.

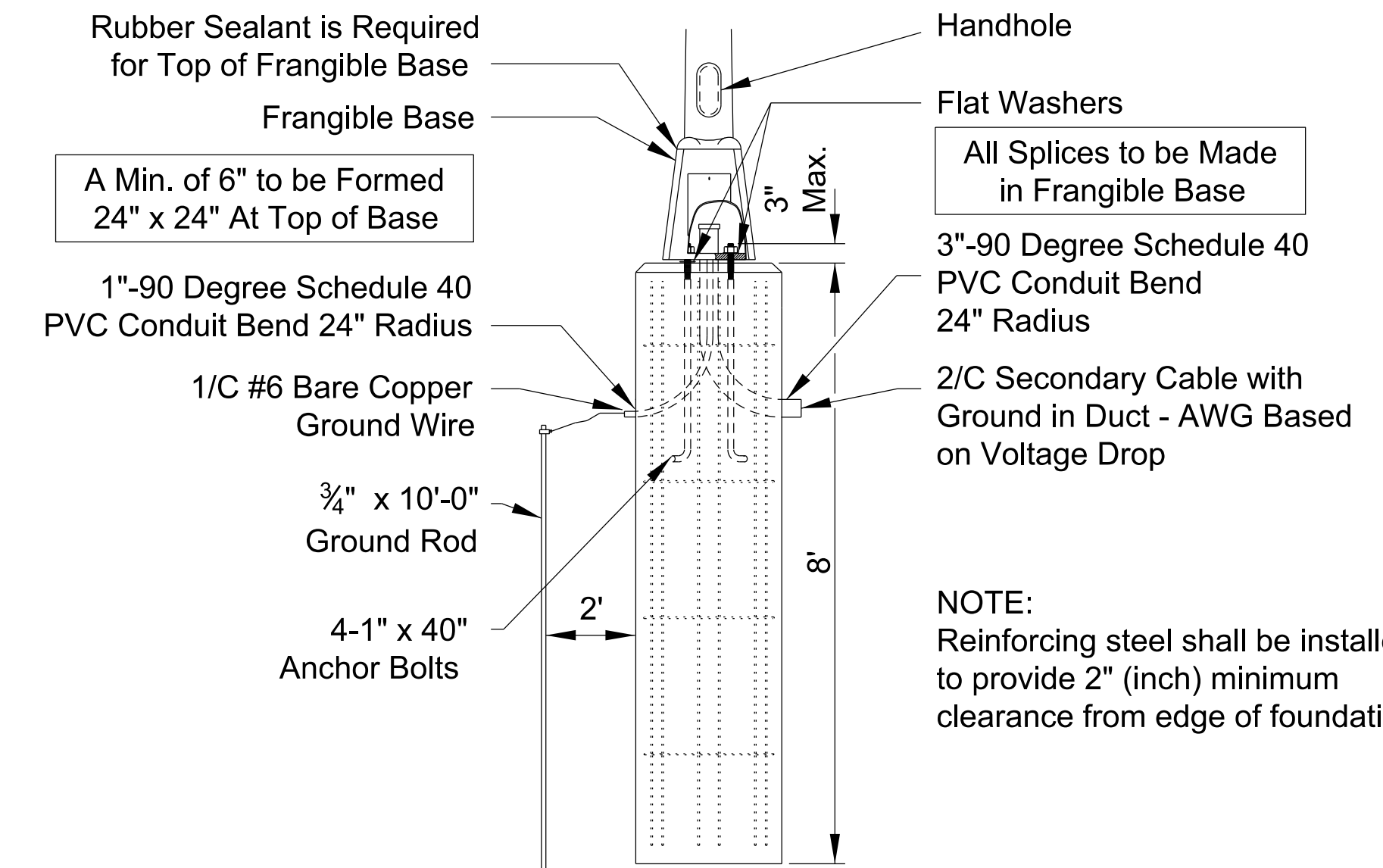


**BREAKAWAY SUPPORT STUB CLEARANCE DIAGRAM**

**NOTE:**  
The foundation shall be installed to meet the breakaway support stub clearance of 4" (inch) maximum, to include anchor bolts.



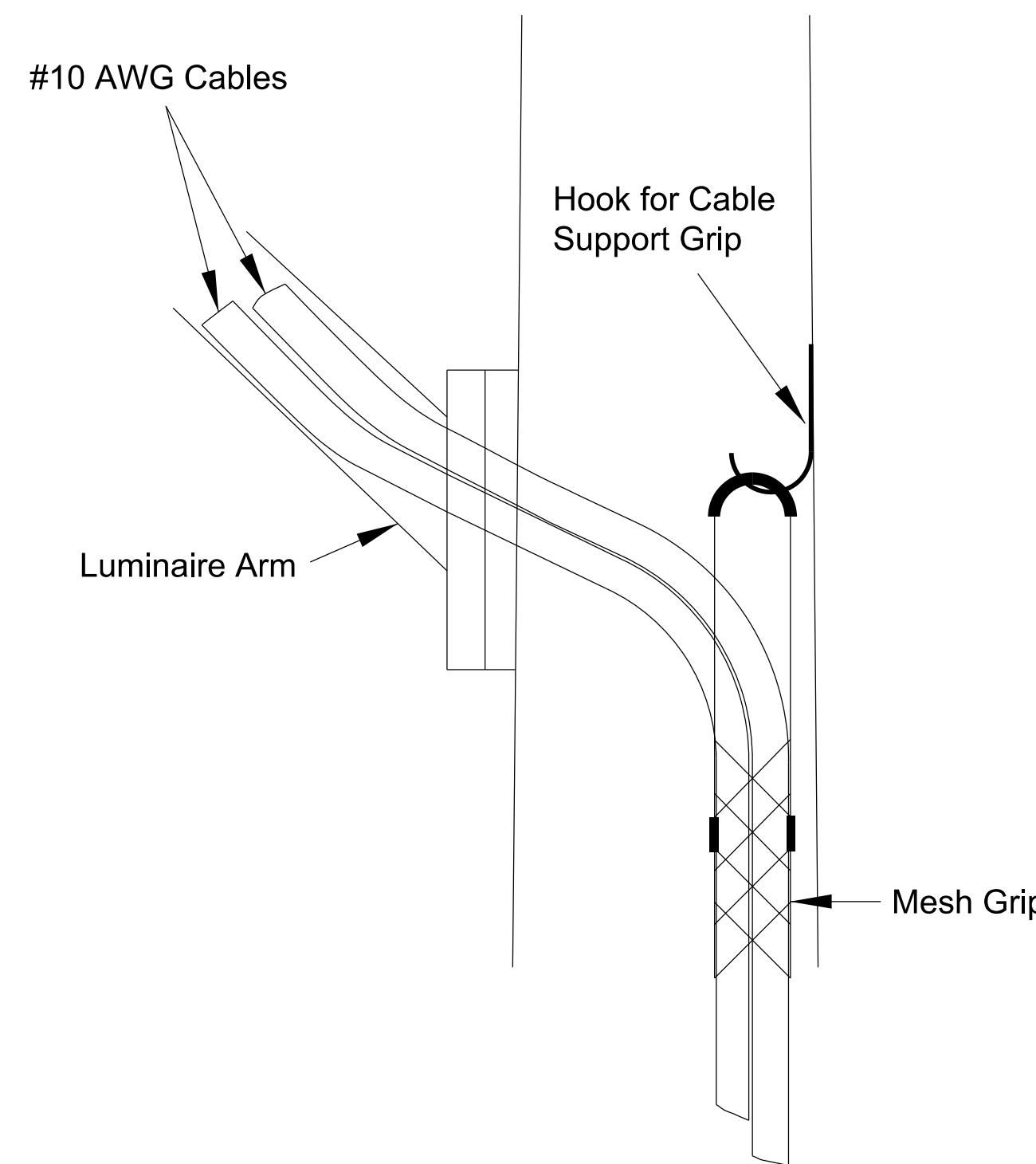
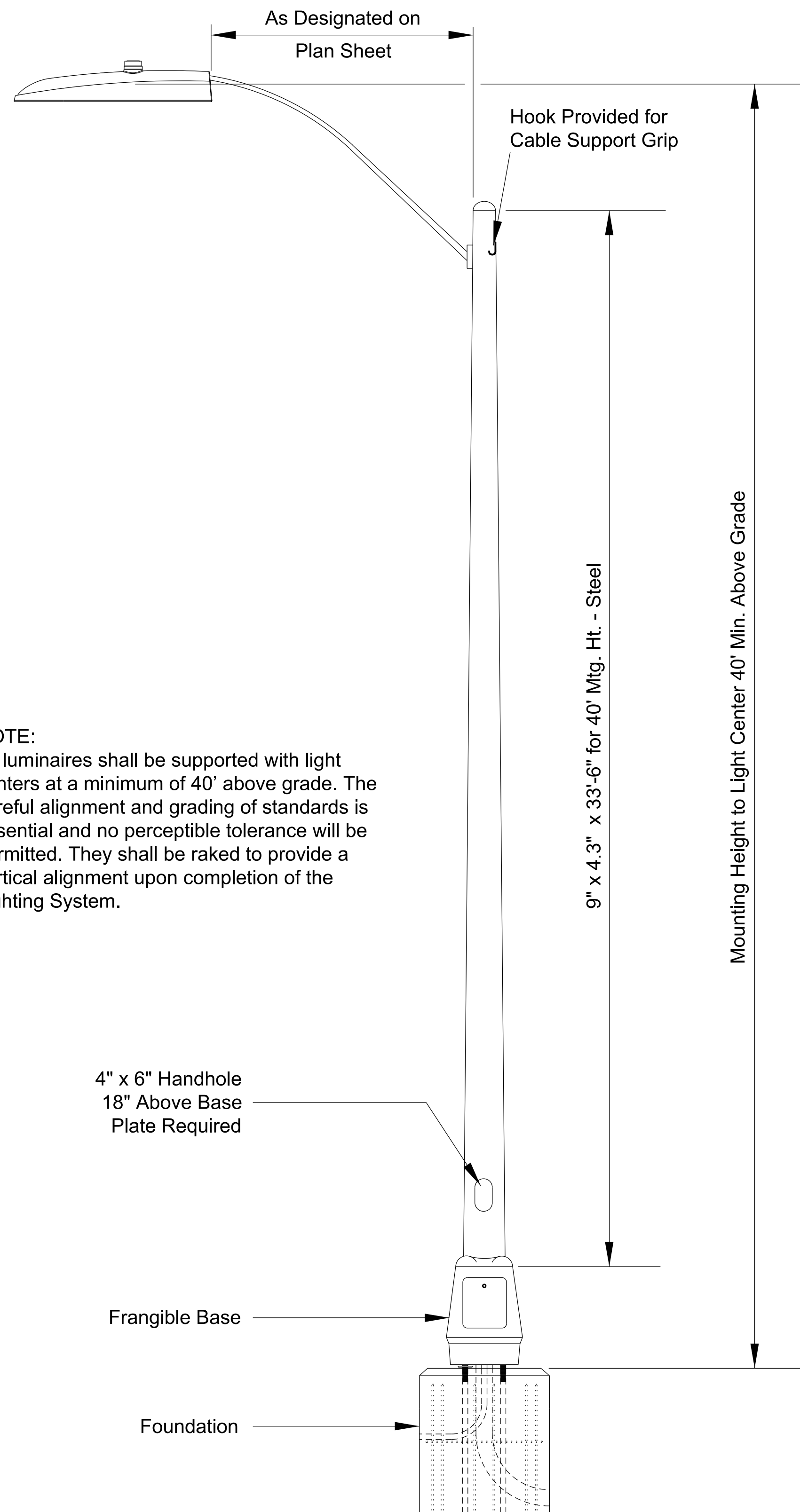
**TOP VIEW FOUNDATION**



**FOUNDATION DETAIL**

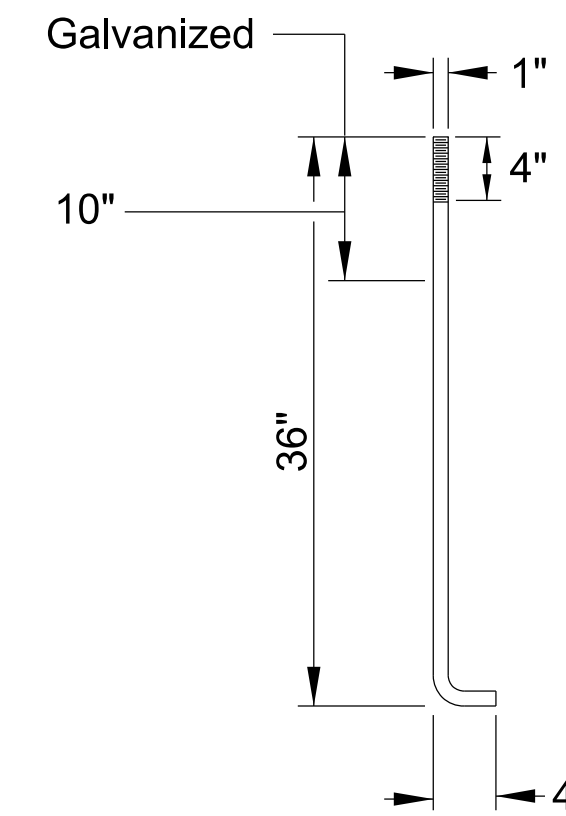
**NOTE:**

All luminaires shall be supported with light centers at a minimum of 40' above grade. The careful alignment and grading of standards is essential and no perceptible tolerance will be permitted. They shall be raked to provide a vertical alignment upon completion of the Lighting System.

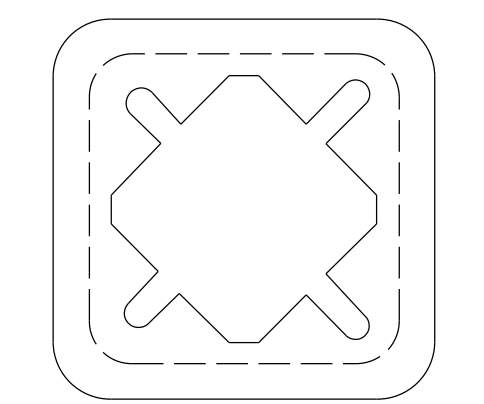


**CABLE SUPPORT GRIP**

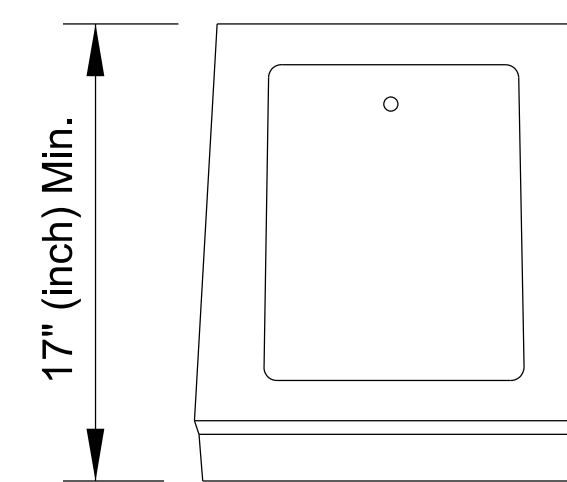
**NOTE:**  
The cable support grip shall be installed on the hook supplied within the light pole as shown above.



**ANCHOR BOLT DETAIL**

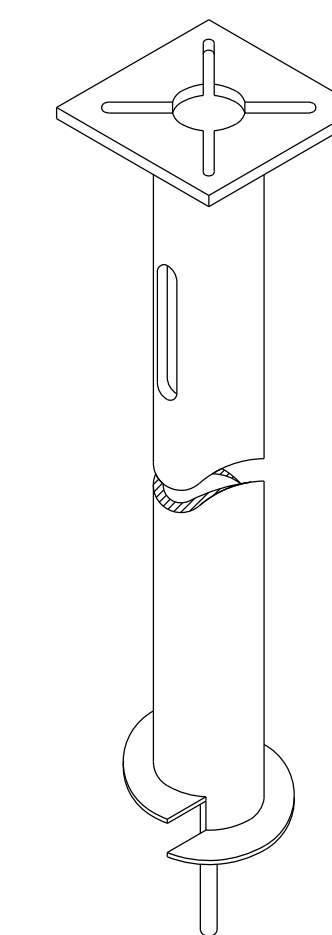


**TOP AND BOTTOM VIEW**



**SIDE VIEW FRANGIBLE BASE**

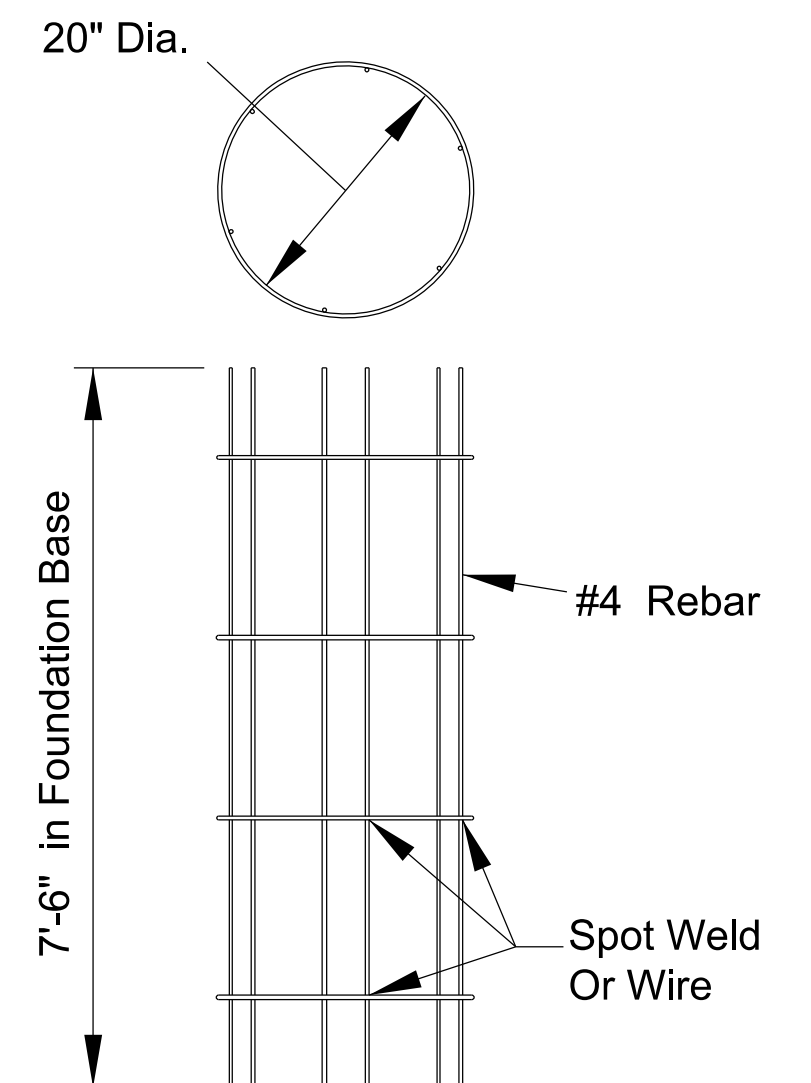
\* **NOTE:**  
The frangible base must accommodate up to a 15" (inch) bottom bolt circle.



**SCREW-IN BASE**

**NOTE:**

Due to soil conditions in all or part of the following counties, Screw-In Light Pole Foundations may only be used for Roadway Lighting upon approval by the Kansas Department of Transportation Bureau of Transportation Safety & Technology: Bourbon, Crawford, Cherokee, Labette, Meade, Clark, Comanche, Kiowa, Barber, Harper, and Kingman. Screw-In foundations shall not be installed in District One.



**REBAR DETAIL**

NO.	DATE	REVISIONS	BY	APPD
3	9/14/18	Changed Luminaire to LED Style	J.P.	C.P.A.
2	1/16/18	Removed Aluminum Standard	J.P.	C.P.A.
1	12/28/11	Chg'd Foundation Detail to show 1" PVC Cond	C.E.	B.D.G.

**KANSAS DEPARTMENT OF TRANSPORTATION**

**ROADWAY LIGHTING DETAILS**

TE201	DESIGNED	C.E.	DATE	09/25/2018	APPD	Brian D. Gover
	DESIGNED	C.E.	QUANTITIES	TRACED		
	DESIGN CK.	B.D.G.	DETAIL CK.	B.D.G.	QUAN. CK.	TRACE CK.

Plotted : \$\$SYTIME\$\$  
File : \$\$KDOTGRP\$\$

Drawn By :  
File : \$\$DGN\$PEC\$\$