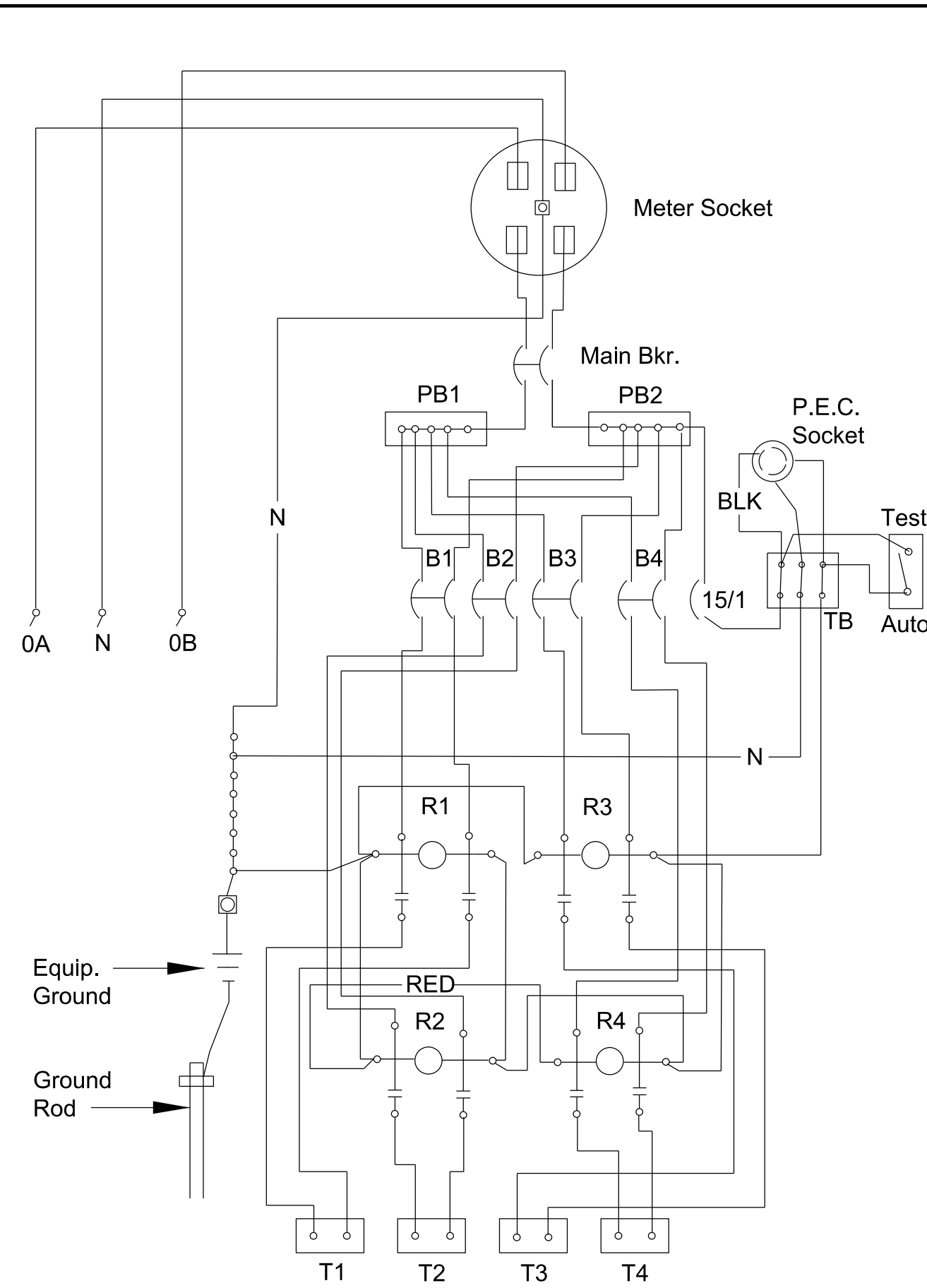
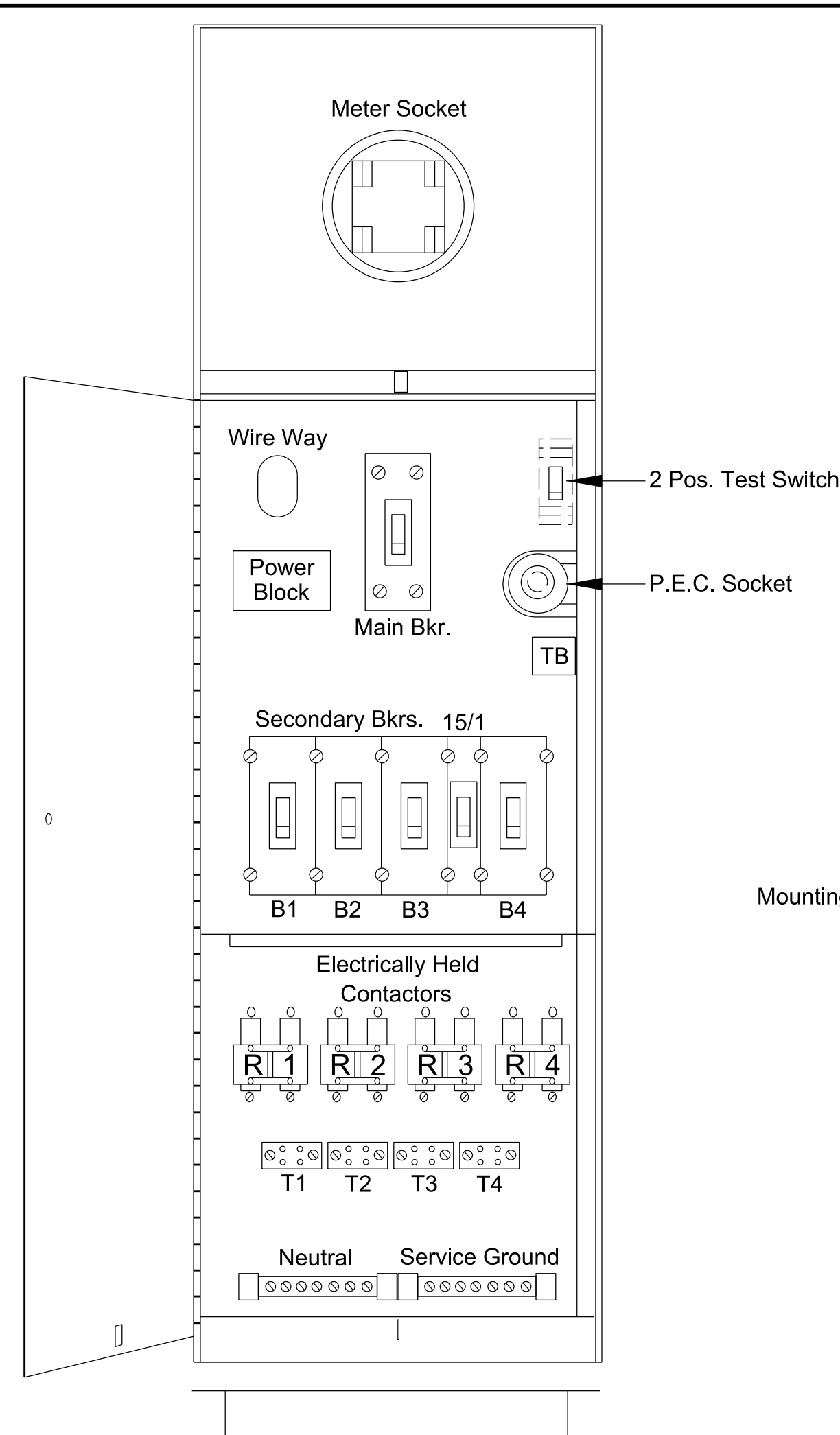


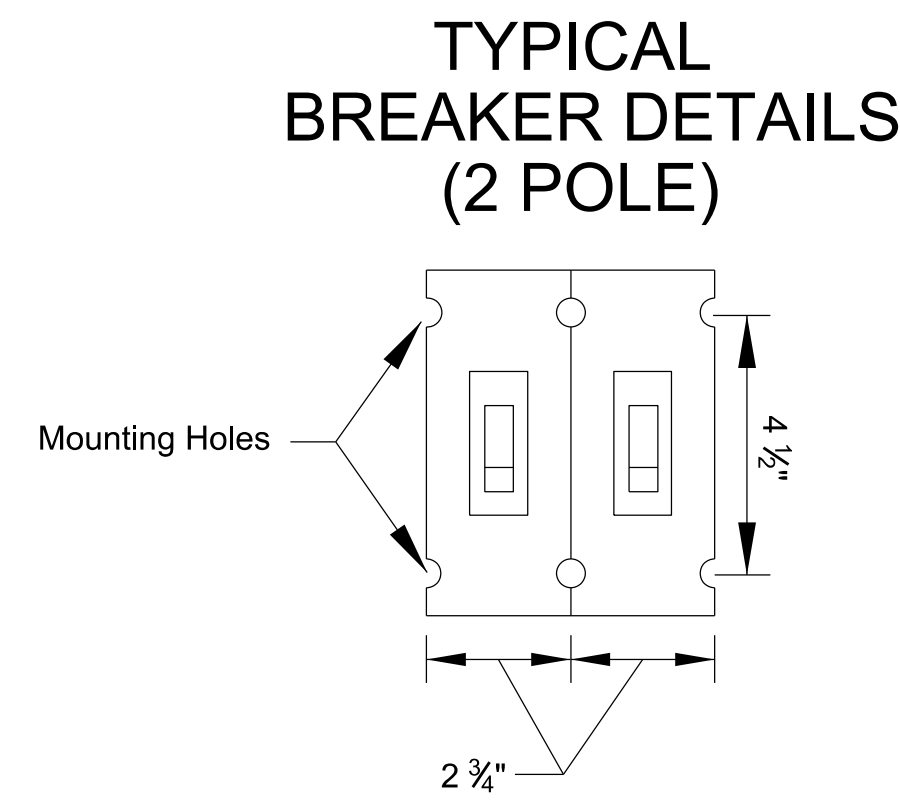
STATE	PROJECT NO.	YEAR	SHEET NO.	TOTAL SHEETS
KANSAS	472-85359	2019	97	135



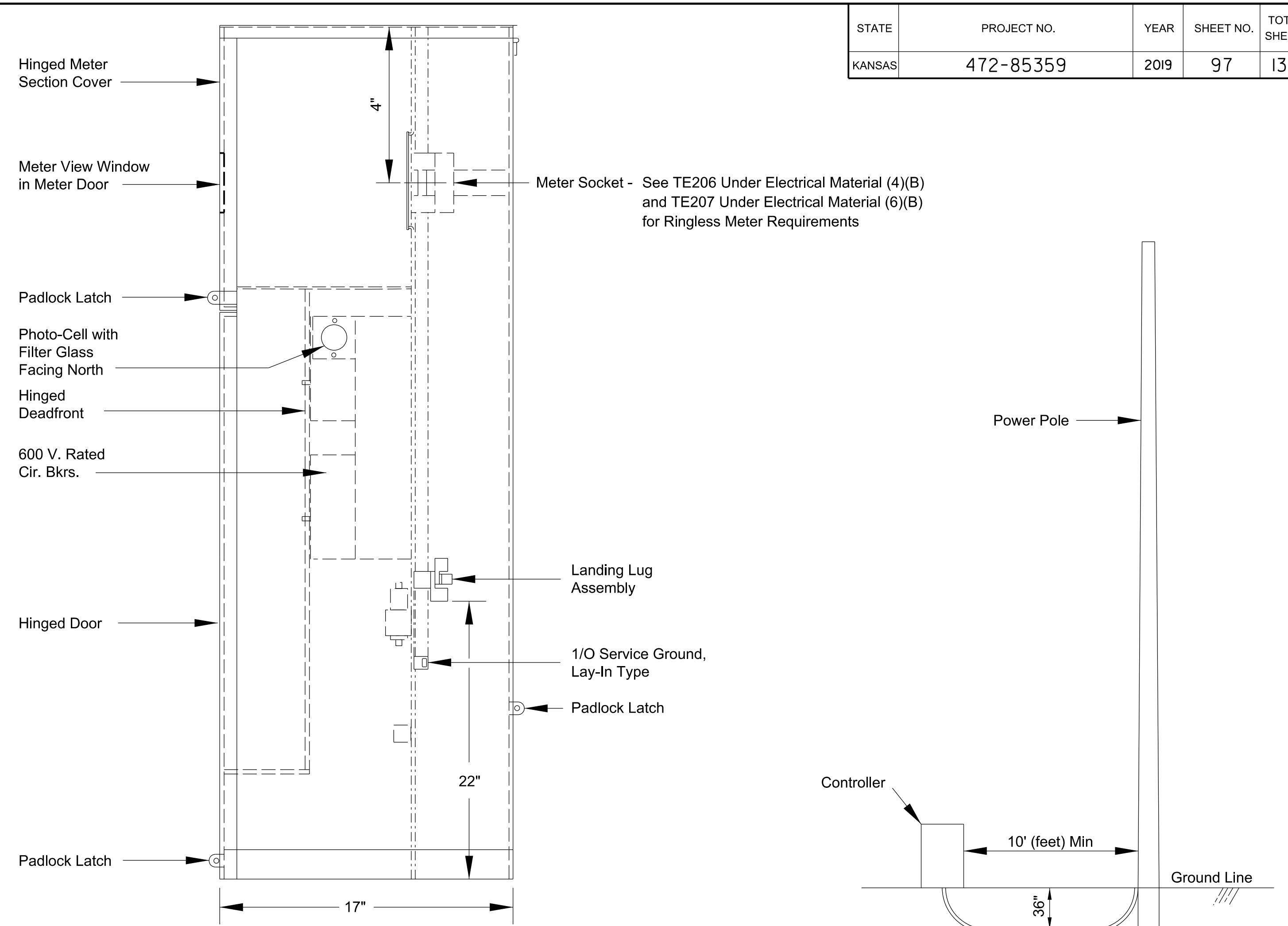
WIRING DIAGRAM



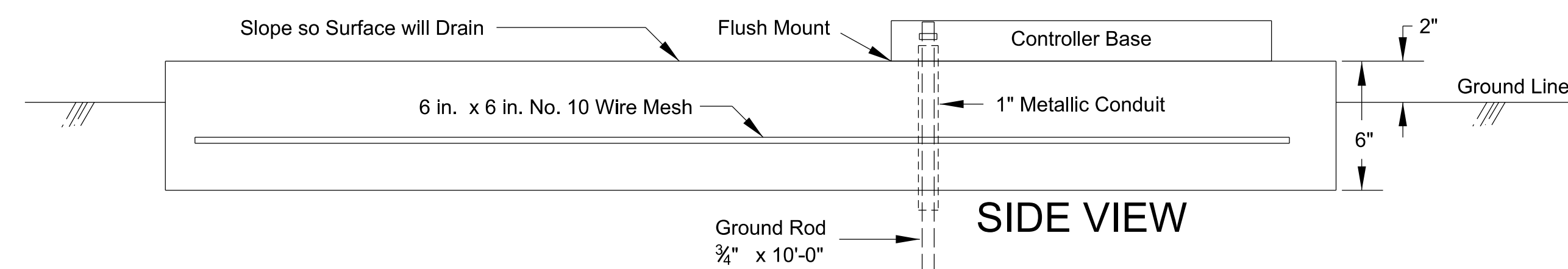
FRONT VIEW



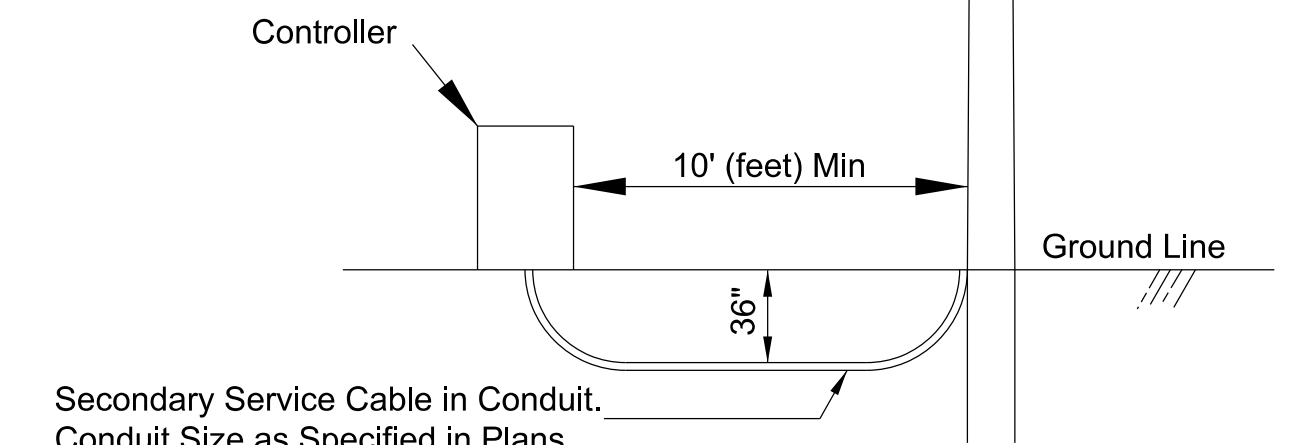
TYPICAL BREAKER DETAILS (2 POLE)



SIDE VIEW



NOTE:
Ground rod shall extend 2" (inch) above the concrete pad inside of controller base.



POWER ARRANGEMENT

NOTE:
The duct for secondary cable shall extend 1" (inch) past the end of the conduit bend.

All conduit to extend 1" (inch) min. above concrete surface.

Pad dimensions shall be adjusted accordingly for the width of the controller to be installed.

Power arrangement shall meet the local utility company specifications.

NOTES:

The controller cabinet shall be constructed of 5052 alloy aluminum 0.125" (inch) thick. The cabinet shall be of clean cut design having no sharp edges, corners or projections.

The controller shall increase in size with the number of circuits.

The customer door shall be hinged the full length of the door and have suitable means of holding the door in the fully open position.

The dead front door shall be hinged and have 3/4 turn clips or other suitable means of locking.

Service entrance in back of controller shall have a hinged or a lift off cover with pad lock provisions.

The secondary breaker for the photo-cell circuit shall be 277 volt, 15 amp single pole.

The wiring from PB1 and PB2 to T1 through T4 shall be No. 6 AWG THW.

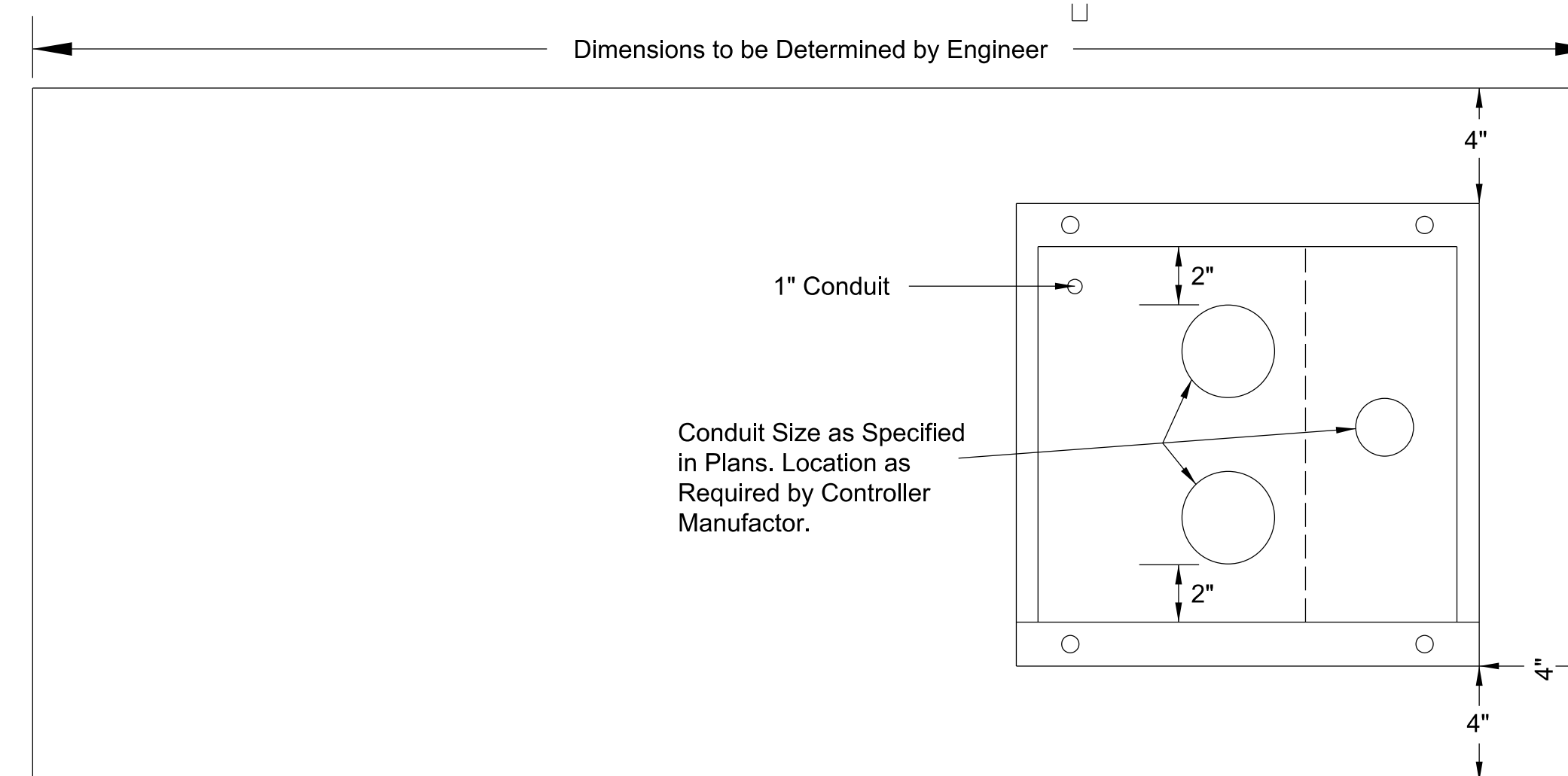
The wiring for the load and line side of the main breaker shall be the same size with the wire.

The wiring for the photo electric control circuit shall be No. 12 AWG THW.

All wiring and wiring methods shall comply with the most current national electric code standards. Any changes to these standards shall be approved by the authority having jurisdiction.

SEE PLAN SHEET

Main Breaker	Amp
Secondary Breaker	Amp
Circuit No. 1	Amp
Circuit No. 2	Amp
Circuit No. 3	Amp
Circuit No. 4	Amp
Electrically Held Contactors	Amp
Circuit No. 1	Amp
Circuit No. 2	Amp
Circuit No. 3	Amp
Circuit No. 4	Amp



TOP VIEW

Plotted : \$\$YTIME\$\$
File : \$\$KDOTGRP\$\$

Drawn By :
File : \$\$DGN\$PEC\$\$

3	01/16/18	Added N Facing/Chg TE Std Loc Side View	J.P.	C.P.A.
2	01/05/15	Added See Meter Options on TE206 & TE207	C.E.	B.D.G.
1	12/28/11	Add SEE PLAN SHEET, Chg'd TopView/Pwer Argm	C.E.	B.D.G.
NO.	DATE	REVISIONS	BY	APPD

KANSAS DEPARTMENT OF TRANSPORTATION				
TYPICAL CONTROLLER DETAILS				
TE202				
FHWA APPROVAL	03/21/2018	APPD	Brian D. Gower	
DESIGNED	C.E.	DETAILED	C.E.	QUANTITIES
DESIGN CK.	B.D.G.	DETAIL CK.	B.D.G.	QUAN. CK.
			TRACED	TRACE CK.