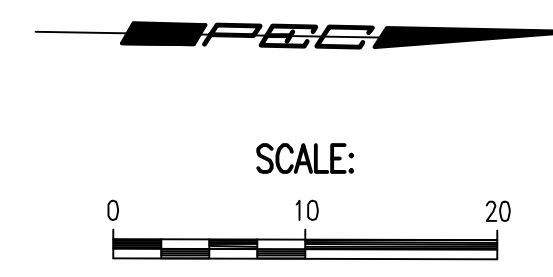
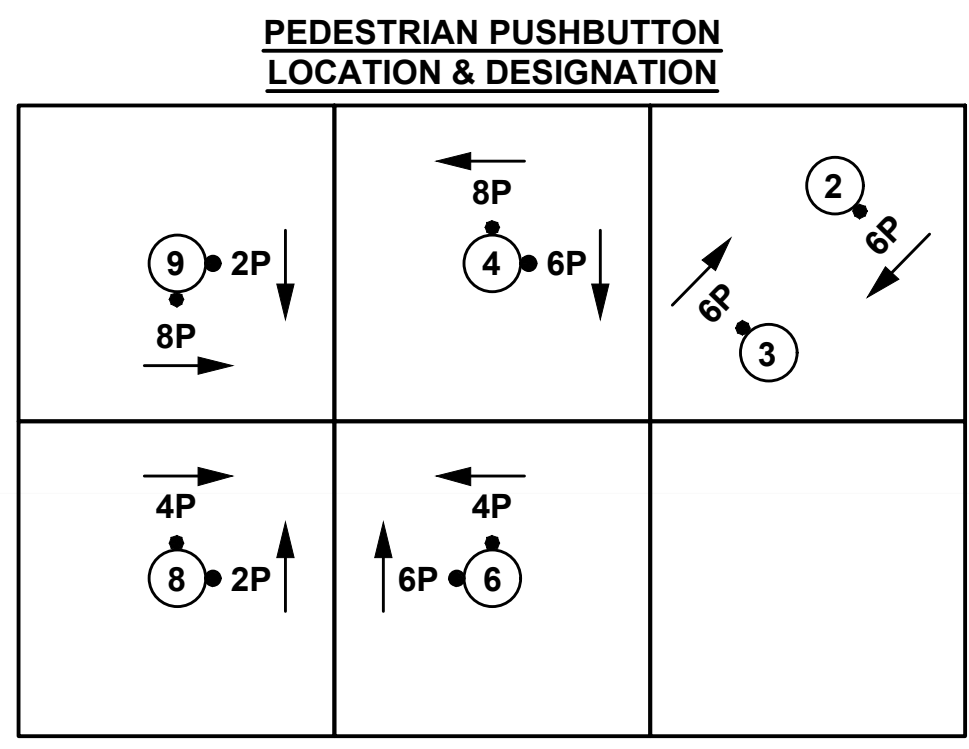
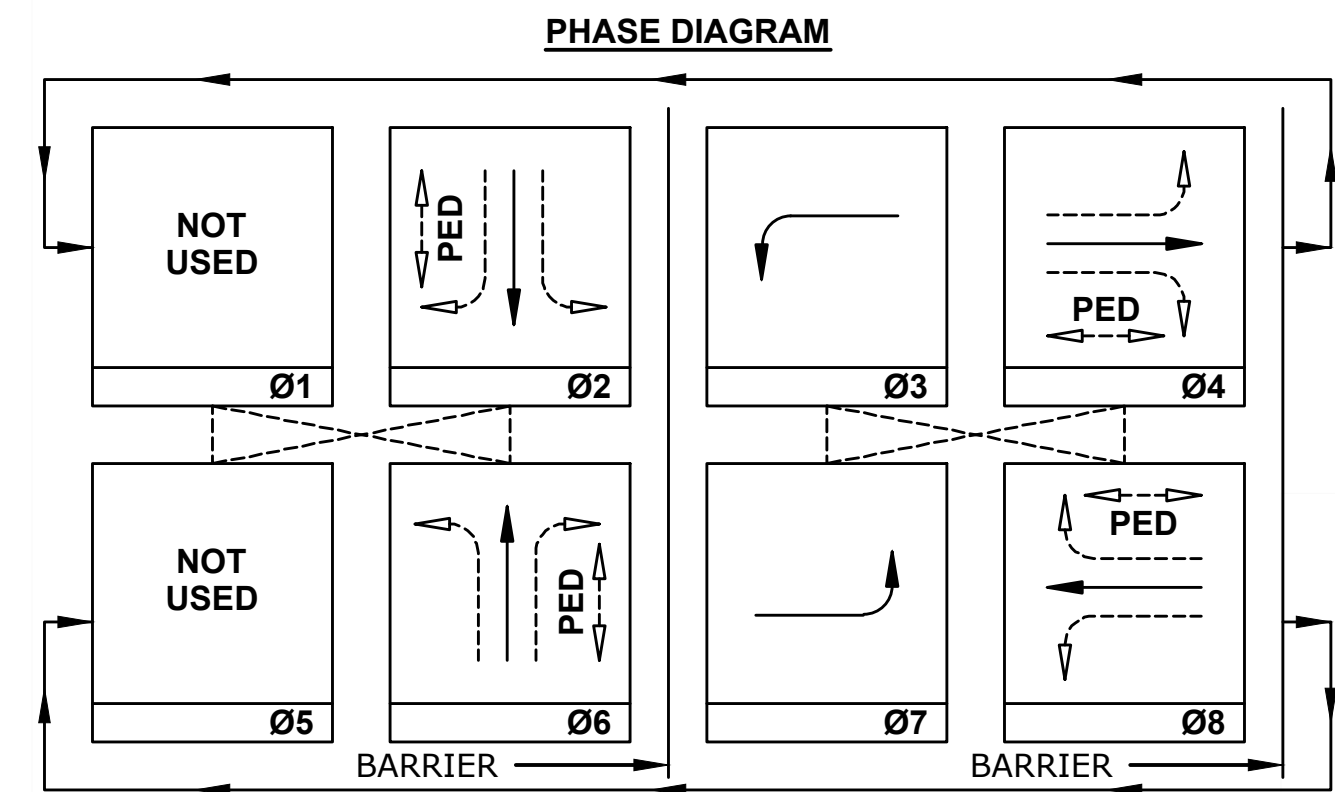




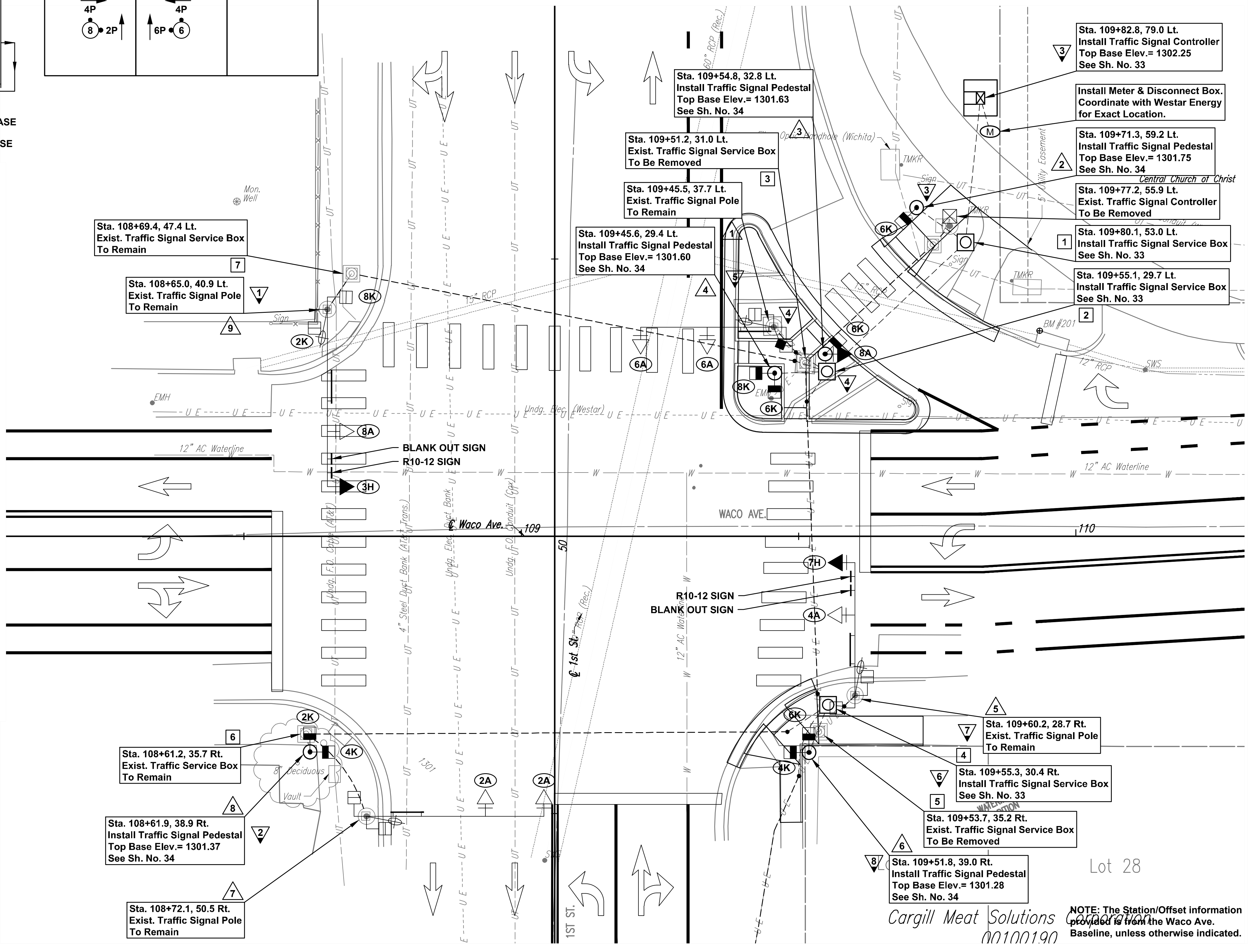
PAVING IMPROVEMENTS
WACO AVENUE FROM DOUGLAS TO CENTRAL
GARY JANZEN, P.E. - CITY ENGINEER
CITY OF WICHITA PROJECT NO. 472-85496



NOTE:
 DASHED LINES CONNECTING PHASES DENOTE NON-CONFLICTING SIGNAL PHASES THAT CAN OCCUR CONCURRENTLY.

MOVEMENTS
 — PROTECTED PHASE
 - - - PERMITTED PHASE

- TRAFFIC SIGNAL CONSTRUCTION NOTES**
- Contractor shall remove outer existing "A" Traffic Signal Head from existing Traffic Signal Pole #9. Contractor shall install new "H" Traffic Signal Head, R10-12 Sign, Blank-out R3-2 Sign and APS Pushbutton Units on existing Traffic Signal Pole #9.
 - Contractor shall install new Traffic Signal Pedestal #8 with APS Pushbutton Units. Contractor shall relocate existing Pedestrian Signal Heads #2K and #4K from existing Traffic Signal Pole #7 and relocate to new Traffic Signal Pedestal #8.
 - Contractor shall construct new Traffic Signal Controller Pad and install new Traffic Signal Controller. Contractor shall remove the existing Pole Mounted Controller, Pedestal Pole and foundation.
 - Contractor shall remove existing traffic signal cables and existing Traffic Service Box #3. Contractor shall extend existing conduits to new Traffic Service Box #2.
 - Contractor shall install new Traffic Signal Pedestal #4 with APS Pushbutton Units. Contractor shall relocate existing Pedestrian Signal Heads #6K and #8K from existing Traffic Signal Pole #1 and relocate to new Traffic Signal Pedestal #4.
 - Contractor shall remove existing traffic signal cables and existing Traffic Service Box #5. Contractor shall extend existing conduits to new Traffic Service Box #4.
 - Contractor shall remove outer existing "A" Traffic Signal Head from existing Traffic Signal Pole #5. Contractor shall install new "H" Traffic Signal Head, R10-12 Sign and Blank-out R3-2 Sign on existing Traffic Signal Pole #5.
 - Contractor shall install new Traffic Signal Pedestal #6 with APS Pushbutton Units. Contractor shall relocate existing Pedestrian Signal Heads #4K and #8K from existing Traffic Signal Pole #5 and relocate to new Traffic Signal Pedestal #6.



Cargill Meat Solutions
 00100190
 NOTE: The Station/Offset information provided from the Waco Ave. Baseline, unless otherwise indicated.

Saved 6/7/2019 9:30:54 AM by SAC
 Plot Scale: 1:1 7-3-2019 1:42:21 PM by CARLOS PEREZ
 U:\Wichita-Civil\2018\187042-006\Mun\Trans\Drawings\187042-006-20C-WACO & FIRST TS PLAN

Issue:	
JOB NO.	187042-006
DATE	JUNE 2019
PM	BMM
DESIGNED BY	RJS, SAC
DRAWN BY	CP, BJS
CHECKED BY	BMM