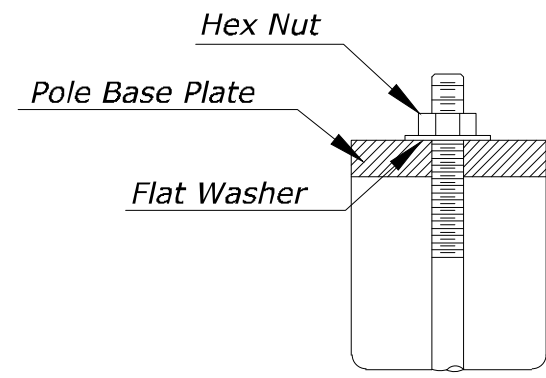
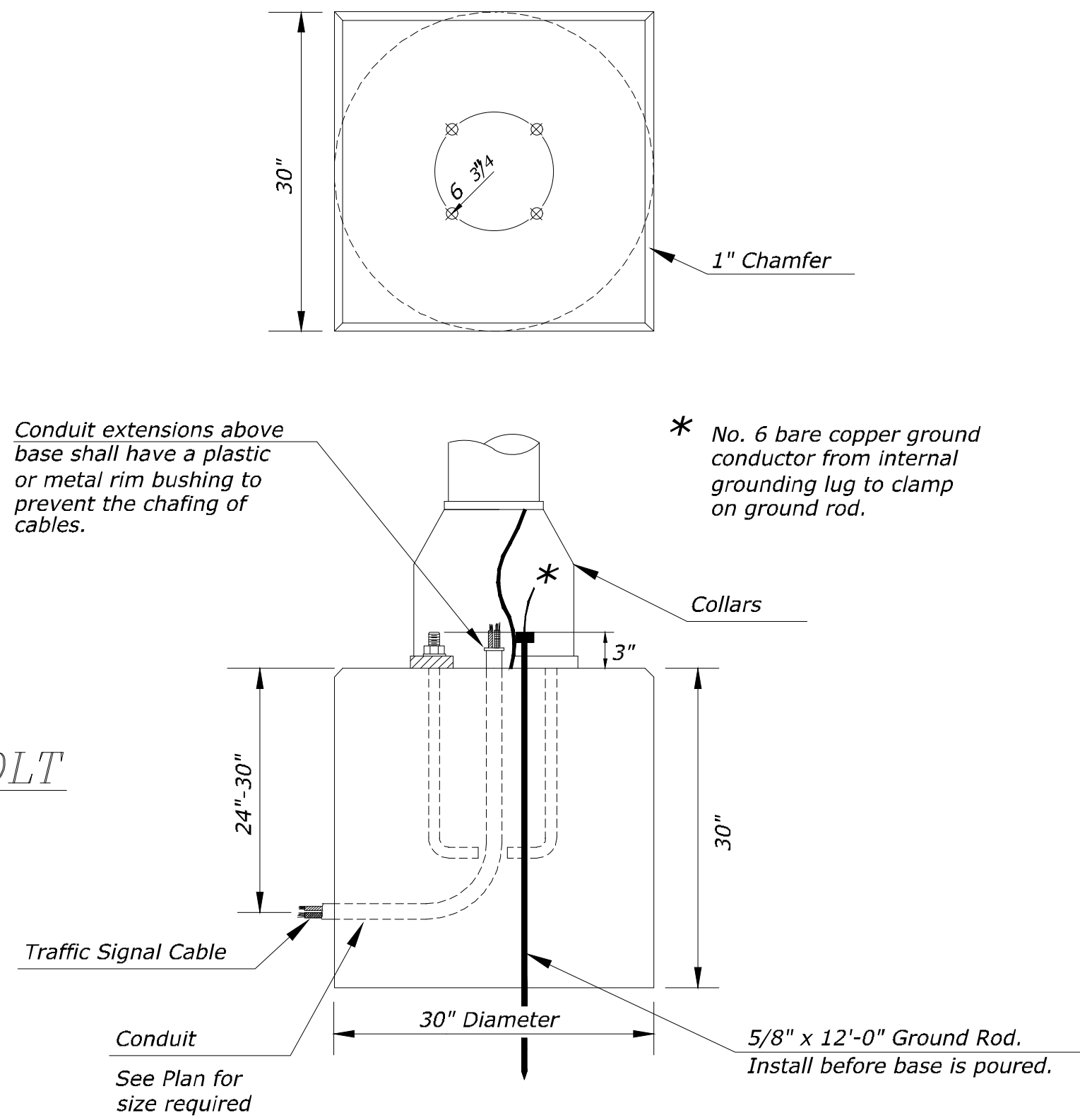


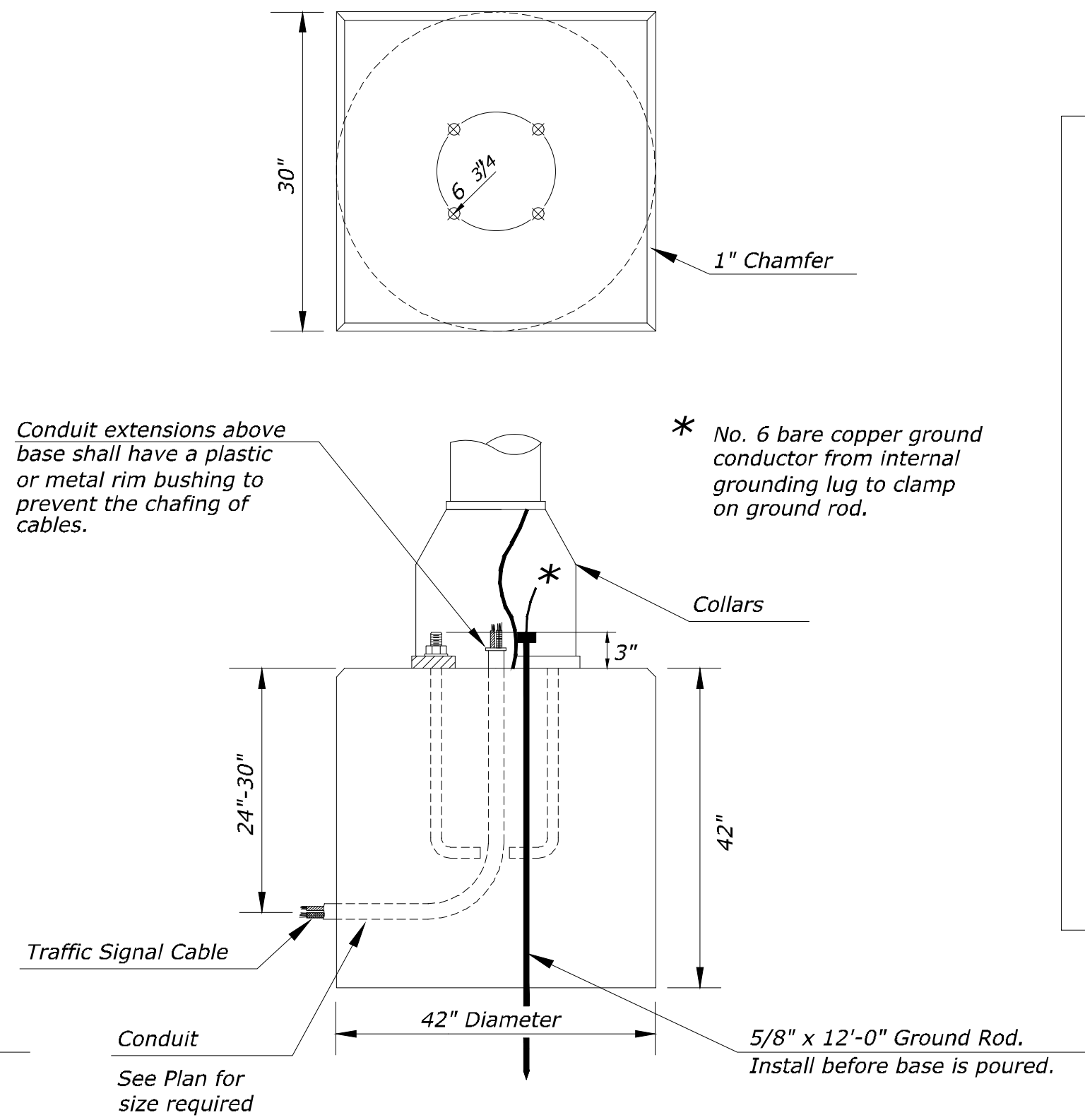
Use Keystone "No-Weld Number 1 Anti-Seize Compound" on all bolts & nuts.



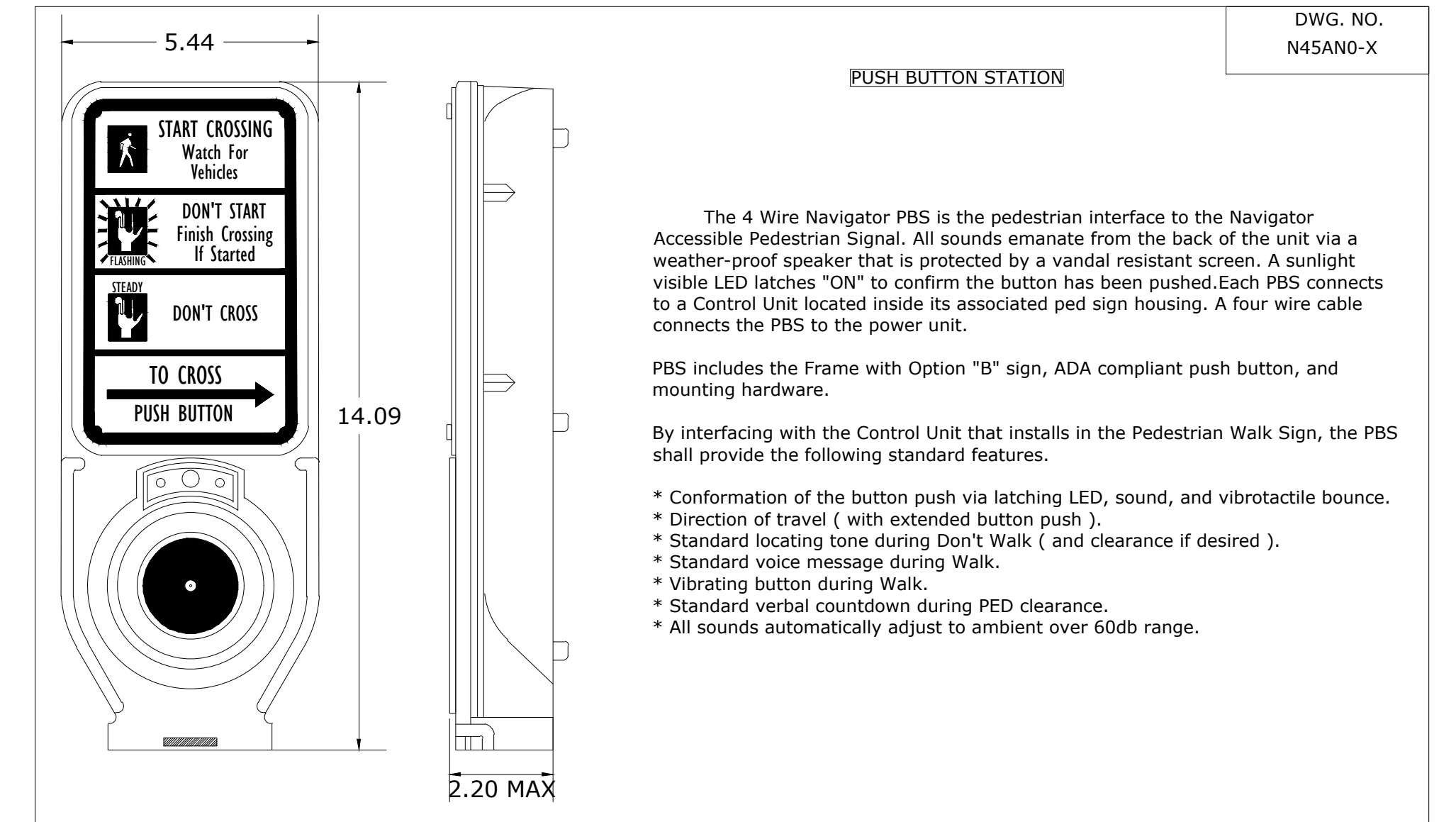
ANCHOR BOLT  
DETAIL



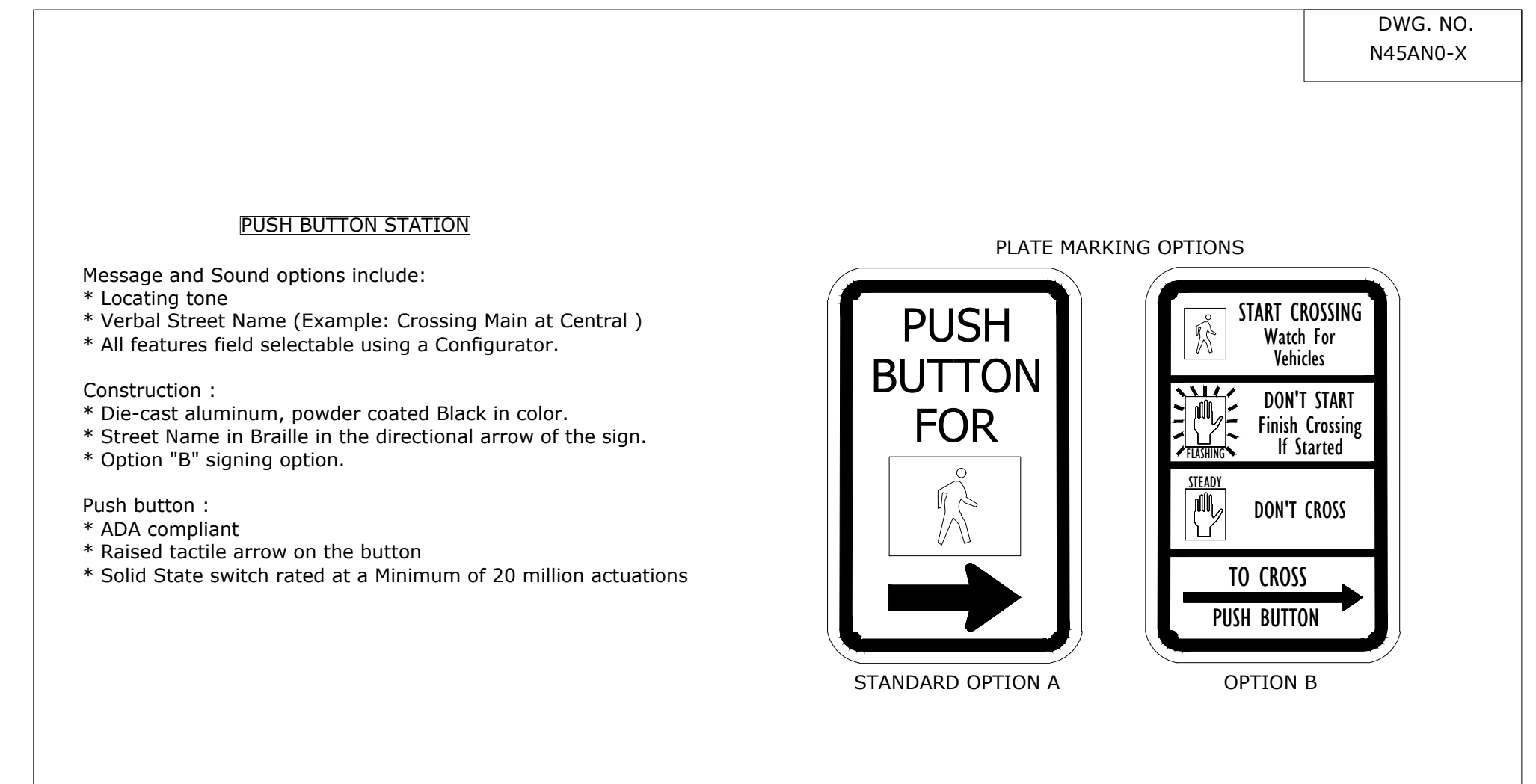
CONCRETE BASE-A DETAIL



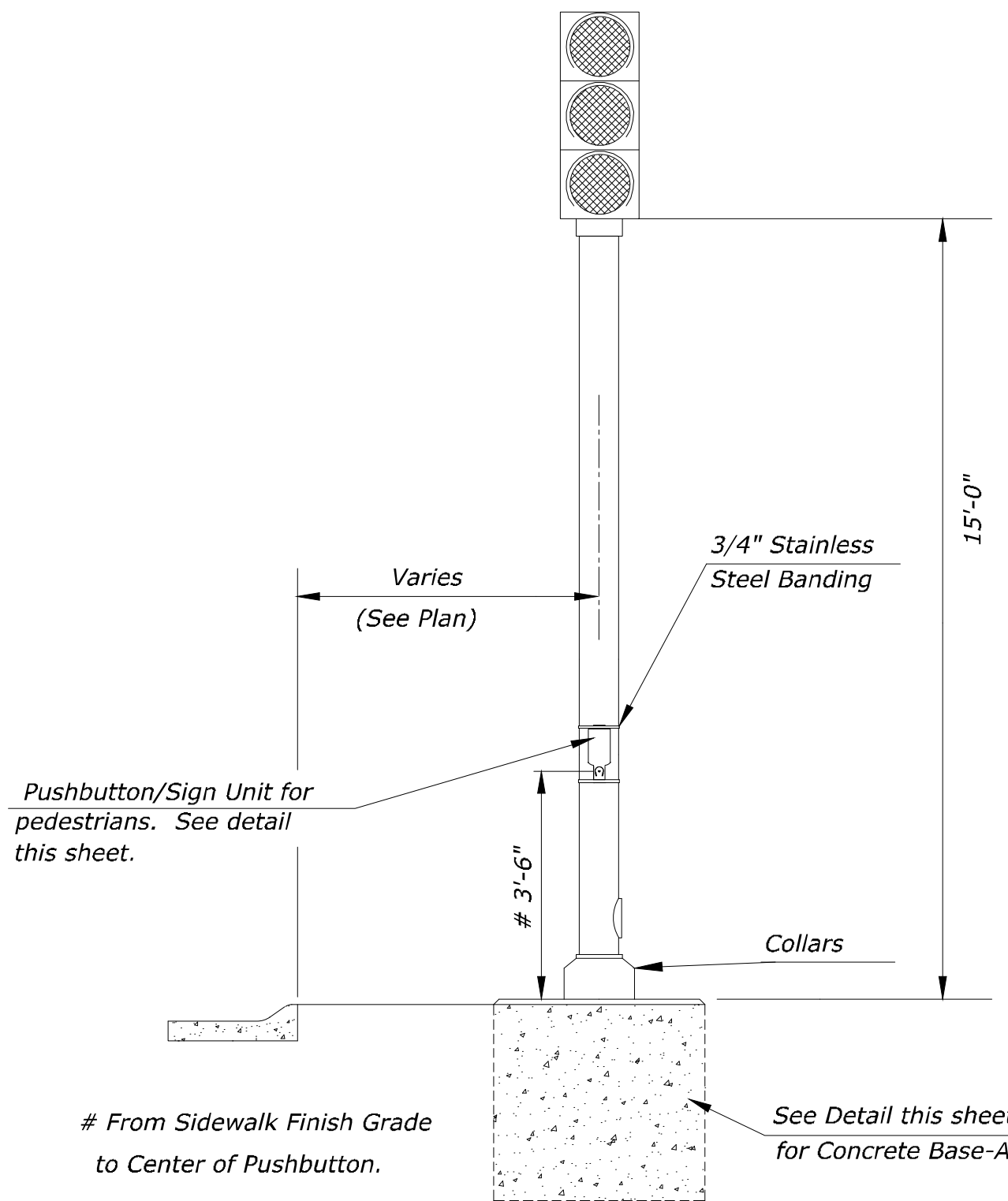
CONCRETE BASE-B DETAIL FOR  
TRAFFIC SIGNAL PEDESTAL  
WITH CONTROLLER CABINET



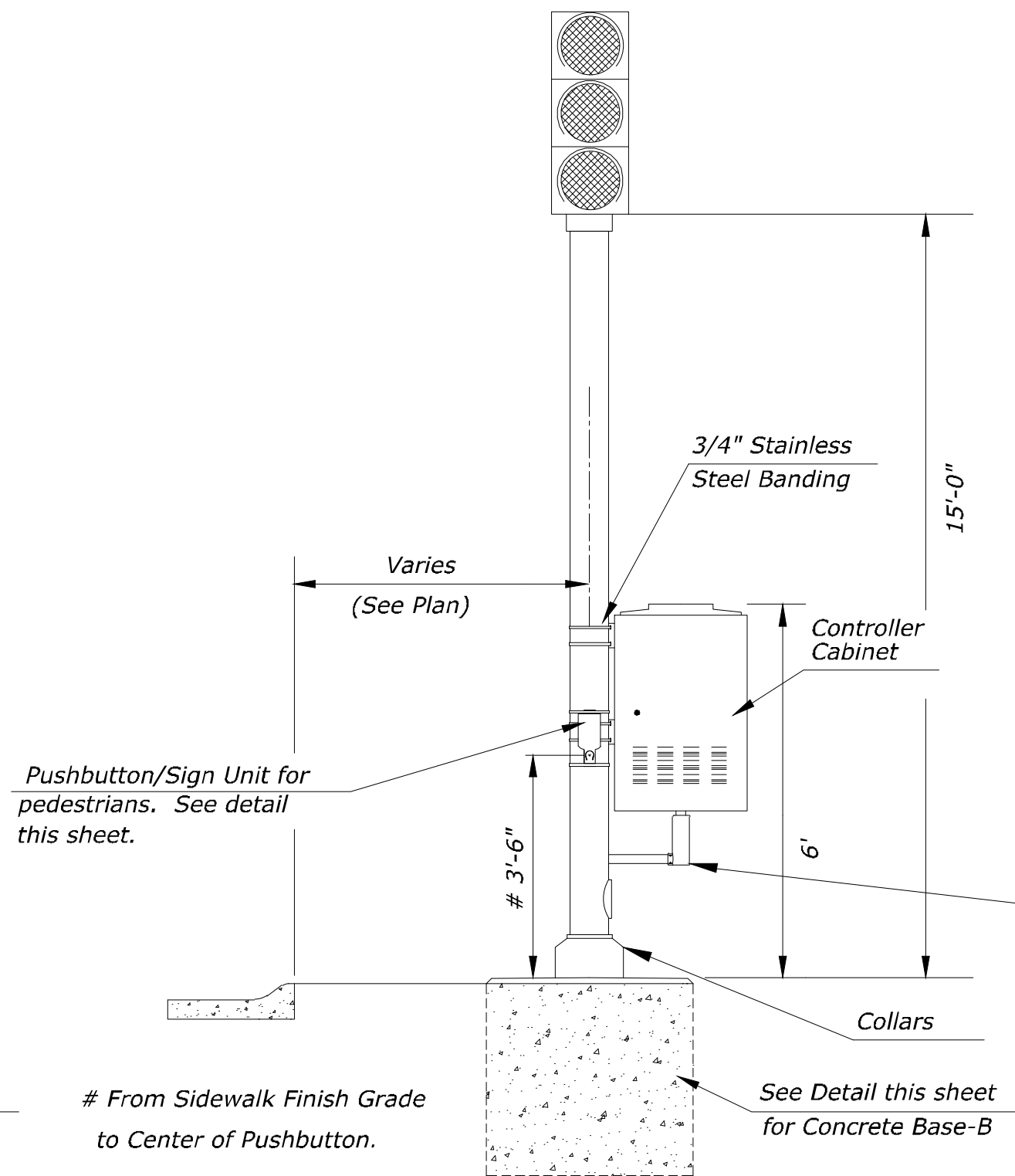
PEDESTRIAN PUSHBUTTON/SIGN  
UNIT DETAIL



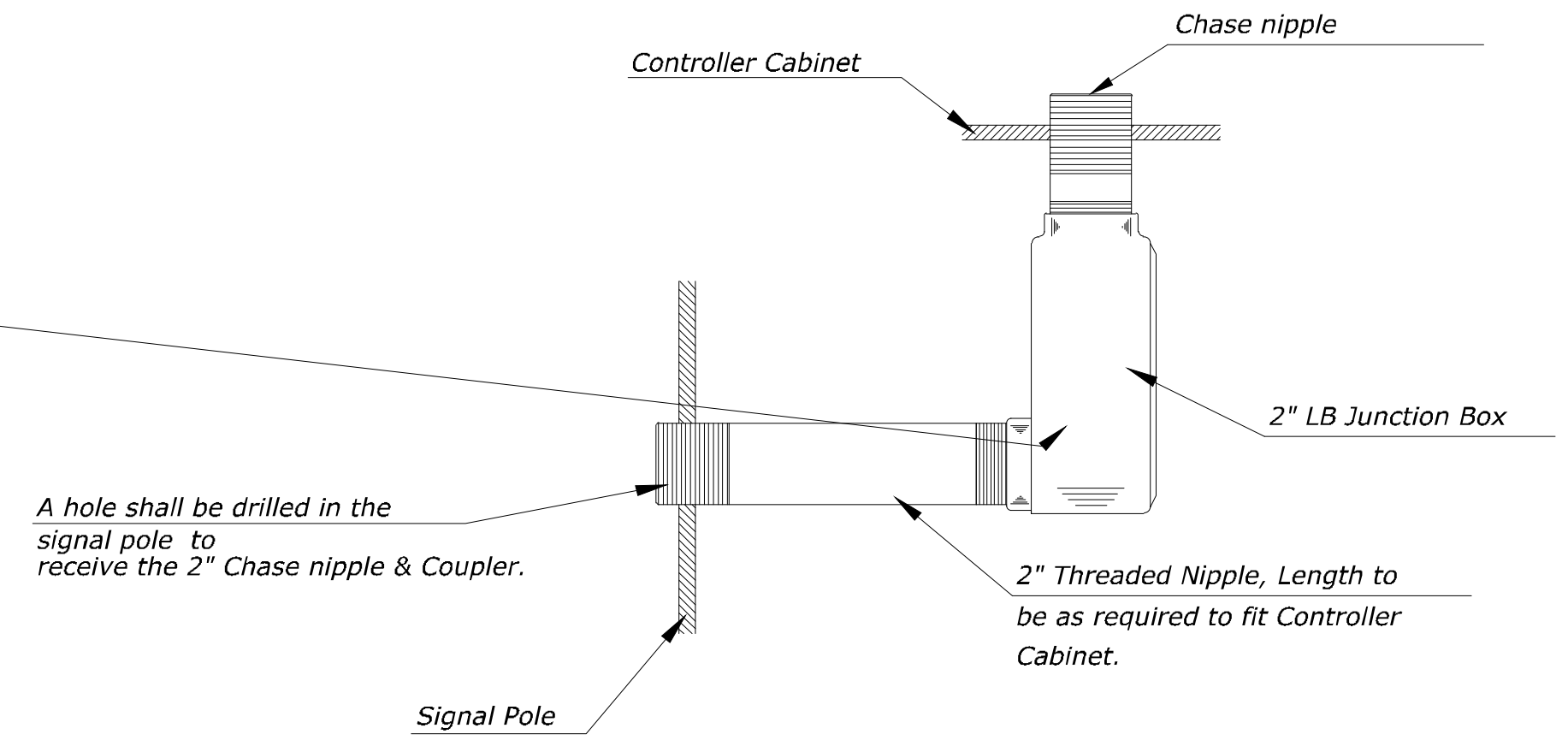
Sheet: 06-04-2019 5:05:32 PM by CP  
 Plot Scale: 1:1 07-03-2019 1:46:11 PM by BEJ  
 U:\Wichita-Civil\2018\187042\Drawings\187042-006-34C-TR-112 Sig Ped with ADA push button



TRAFFIC SIGNAL PEDESTAL



TRAFFIC SIGNAL PEDESTAL  
WITH CONTROLLER CABINET



REVISD: AUGUST 2014

**SIGNAL PEDESTAL & BASE WITH ADA PUSH BUTTON**

TRAFFIC ENGINEER  
**BRIAN A. COON P.E.**

PROJECT NUMBER 472-85496	OCA NUMBER 707150	DATE
CITY ENGINEER'S OFFICE CITY HALL - SEVENTH FLOOR 455 NORTH MAIN STREET WICHITA, KANSAS 67202-1620 (316) 268-4501		SHEET <b>34 of 48</b>