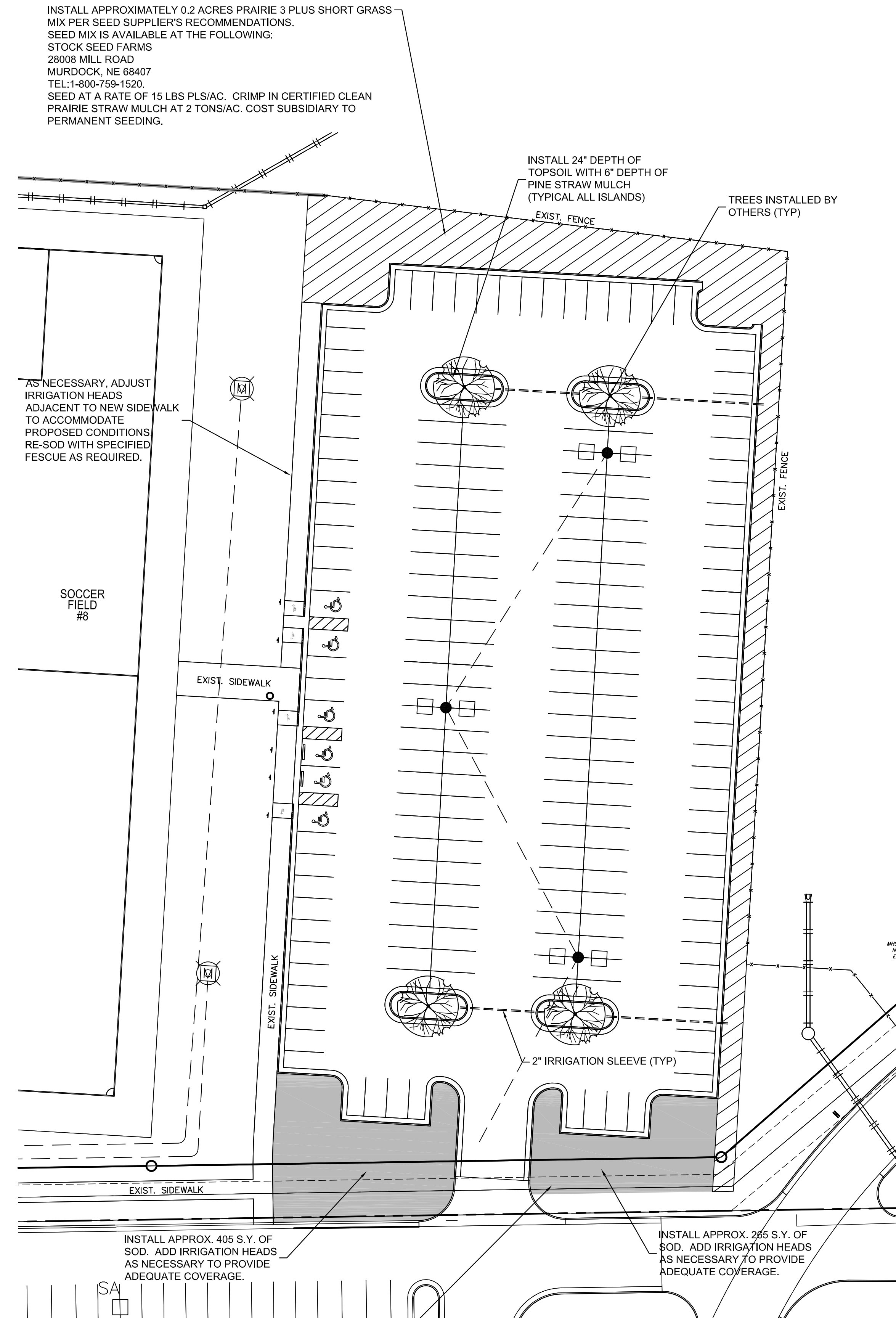


LANDSCAPE NOTES

- LANDSCAPE CONTRACTOR IS TO VERIFY THE LOCATION OF ALL UNDERGROUND UTILITIES (INCLUDING THOSE INDICATED ON THE PLAN) PRIOR TO INSTALLATION OF PLANT MATERIAL. UTILITIES CAN BE FLAGGED BY CALLING 811, OR 1-800-344-7233, OR ONLINE AT www.kansasonecall.com. DAMAGE TO UTILITIES SHALL BE AVOIDED DURING THE COURSE OF WORK. THE LANDSCAPE CONTRACTOR IS RESPONSIBLE FOR REPAIRING ANY AND ALL DAMAGE TO UTILITIES, STRUCTURES, SITE APPURTENANCES, ETC. WHICH OCCUR AS A RESULT OF THE LANDSCAPE CONSTRUCTION.
- WATER REQUIRED FOR LANDSCAPE OPERATIONS SHALL BE PROVIDED BY THE CONTRACTOR. IF COORDINATED WITH THE CITY OF WICHITA PROJECT REPRESENTATIVE, THE EXISTING IRRIGATION CAN BE USED. IF IRRIGATION SYSTEM WILL NOT PROVIDE ADEQUATE COVERAGE THEN CONTRACTOR SHALL ARRANGE FOR TEMPORARY METERED WATER OR AN ALTERNATE METHOD FOR WATERING.
- INSTALL 6" MINIMUM DEPTH OF PINE STRAW MULCH IN ALL PLANTING BED AREAS AND WITHIN A 3' DIAMETER CIRCLE AROUND ALL TREES PLANTED IN LAWN AREAS. SUBMIT 1 CU/FT SAMPLE FOR APPROVAL. PULL MULCH AWAY FROM TREE TRUNKS WITHIN 3" OF TRUNK.
- EXISTING IRRIGATION SYSTEM SHALL BE MODIFIED TO ACCOMMODATE PROPOSED CONDITIONS.
- AREAS DENOTED AS 'SOD' SHALL BE PLANTED WITH THE FOLLOWING GRASS TYPE:
SOD:
FESCUE/BLUE TURF MIXTURE, OBTAINABLE FROM CRANMER GRASS FARM, INC., 6121 N. 119TH, MAIZE, KANSAS 67101, PH# (316) 722-7230 OR APPROVED EQUAL
- SOD AREAS SHALL BE INSTALLED AS FOLLOWS: AFTER FINAL GRADE IS ESTABLISHED AND ALL SOIL AREAS DRAIN AS INTENDED, AND ALL SURFACE IRREGULARITIES HAVE BEEN REMOVED, THOROUGHLY PREPARE SODBED BY TILLING TO A MINIMUM DEPTH OF 3" AND HARROWING. ROLL SOD FOLLOWING LAYING FOR GOOD SOD/SOIL CONTACT AND KEEP IN A MOIST (BUT NOT SATURATED) CONDITION FOR FIRST TWO WEEKS TO PROMOTE GOOD ROOTING. FERTILIZE WITH 1 LB. ACTUAL NITROGEN PER 1,000 S.F. AT TIME OF PLANTING.
- ALL PLANTS SHALL CONFORM TO ANSI Z60.1 FOR SIZE AND QUALITY STANDARDS.
- ALL PLANTS ARE SUBJECT TO THE APPROVAL OF THE LANDSCAPE ARCHITECT BEFORE, DURING, AND AFTER INSTALLATION. REJECTED PLANTS SHALL BE REMOVED IMMEDIATELY.
- ALL LANDSCAPE PLANTS SHALL BE GUARANTEED FOR ONE YEAR FOLLOWING INITIAL ACCEPTANCE. DEAD OR DEFICIENT PLANTINGS SHALL BE ACCEPTABLY REPLACED, IN PROPER PLANTING SEASON, ONE TIME AT NO COST TO THE OWNER. SOD AREAS MAY BE FINAL ACCEPTED AT TIME OF COMPLETION OF ESTABLISHMENT WITH NO FURTHER GUARANTEE REQUIRED.
- TOPSOIL FOR PARKING ISLANDS SHALL BE A MINIMUM OF TWENTY-FOUR INCHES (24") DEPTH. SOD AREAS SHALL BE SIX INCH (6") MINIMUM TOPSOIL DEPTH.
- PROPOSED TREES SHALL BE PROVIDED BY THE CITY OF WICHITA. CONTACT INFORMATION BELOW:
CRAIG BEAVER
TREE MAINTENANCE INSPECTOR
CITY OF WICHITA
TEL: 316.337.9181



PAVING, LANDSCAPE, AND LIGHTING
STRYKER SPORTS
WICHITA, KANSAS



©2019 MKEC Engineering All Rights Reserved
www.mkec.com
These drawings and their contents, including, but not limited to, all concepts, designs, & ideas are the exclusive property of MKEC Engineering (MKEC), and may not be used or reproduced in any way without the express consent of MKEC.

LANDSCAPE PLAN & DETAILS

PROJECT NO.	1701010567	
DATE	OCT. 16, 2019	
SCALE	1" = 30'	
DESIGNED	RKO	
DRAWN	RKO	
CHECKED	MAB	
NO.	REVISION	DATE
0	IFC	10-16-19