

GENERAL NOTES:

1. Contractor will be required to provide notice to utility companies a minimum of seventy-two (72) hours prior to any excavation, as follows:

Kansas One-Call 687-2470

The Contractor must notify the following in case of an emergency:

- Cox Communications 262-4270
- Kansas Gas Service 1-888-482-4950
- Westar Energy 383-8650
- Aquila Energy 1-800-303-0357
- AT&T 268-2245
- City of Wichita Water Dept. 268-4563
- City of Wichita Sewer Maint. 268-4024
- City of Wichita Storm Sewer Maint. 268-4090
- City of Wichita Traffic Maint. 268-4034
- Conoco Phillips Pipeline Co. 1-877-267-2290
- Southern Star Pipeline Co. 529-6600
- Kinder-Morgan Pipeline Co. 1-888-844-5658

2. Utility service lines, poles, valve boxes, meters, and etcetera are to be adjusted as necessary by others prior to construction unless the plans specifically call for their adjustment by the Contractor or unless the plans specifically identify a utility to be adjusted by its owner during construction. Existing utilities and their location, as shown on the plans, represent the best information obtainable for design. The Contractor will be required to work around existing utilities within the right-of-way which do not conflict with proposed construction.

3. Rubble from the removal of miscellaneous structures and excess excavation which is to be wasted shall be disposed of on sites to be provided by the Contractor. These sites shall be approved by the Engineer as to suitability, appearance and site location. Locations, in the opinion of the Engineer, that will leave an unsightly appearance will not be approved. All disposal sites must be approved by the Kansas Department of Health and Environment. Material either stockpiled or disposed of in a flood plain would require a Kansas State Board of Agriculture permit. Any material dumped in waters of the United States or wetlands is subject to U.S. Corps. of Engineers permitting regulations. Any material buried or stockpiled beyond approved construction limits would require additional archaeological investigations unless buried in a previously approved borrow location.

4. Trees and shrubs in public right-of-way which are in direct conflict with proposed new construction shall be removed by the Contractor with the Engineer's approval. Trees and shrubs which are not in direct conflict with proposed new construction shall be saved and protected from damage.

5. The Contractor shall give all property owners and/or tenants of developed property abutting the construction of this project a minimum of ten (10) days notice prior to start of construction.

6. The Contractor shall be responsible for preserving property irons. The Contractor will be required to re-establish any property irons which are damaged or destroyed by his construction operations. Such irons shall be re-established by a licensed land surveyor in accordance with state laws.

7. All existing and proposed erosion control measures including silt fencing, erosion control mat, straw bales, inlet barriers, and const. entrance shall be maintained throughout construction by the contractor until project is accepted by the City of Wichita. The on-site engineer shall complete weekly reports on the status of erosion control measures. The contractor shall be required to comply with maintenance and/or replacement of erosion control measures as determined by the on-site engineer until project is accepted by City of Wichita. Maintenance and/or replacement of erosion control measures to be paid by L.S. bid item "Maintain Existing BMP's."

8. All excess excavation shall remain on-site and shall be stockpiled or spread at a location determined by the Engineer.

10. Site Clearing and Site Restoration shall include all site preparation and complete removal of trees, shrubs, and any other items in R/W and adjacent areas as necessary for construction. It shall also include saw cuts and removals approved finish grading, and seeding of all disturbed areas due to construction per accompanying specifications.

11. All of Res. "D" & Res. "F" above the water surface and Res. "E" disturbed by construction shall be seeded and mulched as follows:
SEED -- Kansas Premium Fescue Blend; 8#/1000 Sq. Ft.
Rye grass (PLS); 3#/1000 Sq. Ft. and
FERTILIZER -- 12-24-12 Ratio at 350 Lbs./Ac.
MULCH -- 2 Tons Prairie Hay / Acre - where E.C. Mat not specified.

All other disturbed areas are to be seeded as follows:
SEED -- Rye grass (PLS)--5#/1000 Sq. Ft.

All costs associated with seeding including mobilization, preparation of ground, seeding, fertilizing, mulching, etc. shall be included in the L.S. bid item "Seeding".
An additional bid item for "Seeding, Temporary" has been included and may be used at the discretion of the Design Engineer. Temporary seed shall be Annual Rye at of 5 Lbs./1000 Sq. Ft. unless otherwise noted and shall be planted when permanent seed or sod cannot be used due to seasonal limitations.

12. The Developer for this project is Kevin Mullen
8100 E. 22nd St N, Bldg 1000, Wichita, KS 67226
PH# (316) 684-7300
Email Kevin@ritchidevelopment.com

STORMWATER DRAIN IMPROVEMENTS to serve THE RANCH 2ND ADDITION

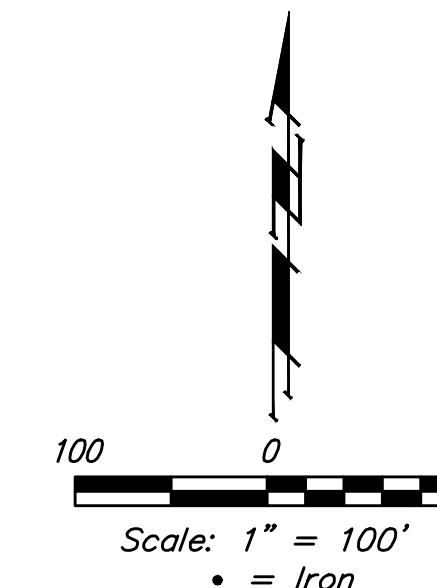
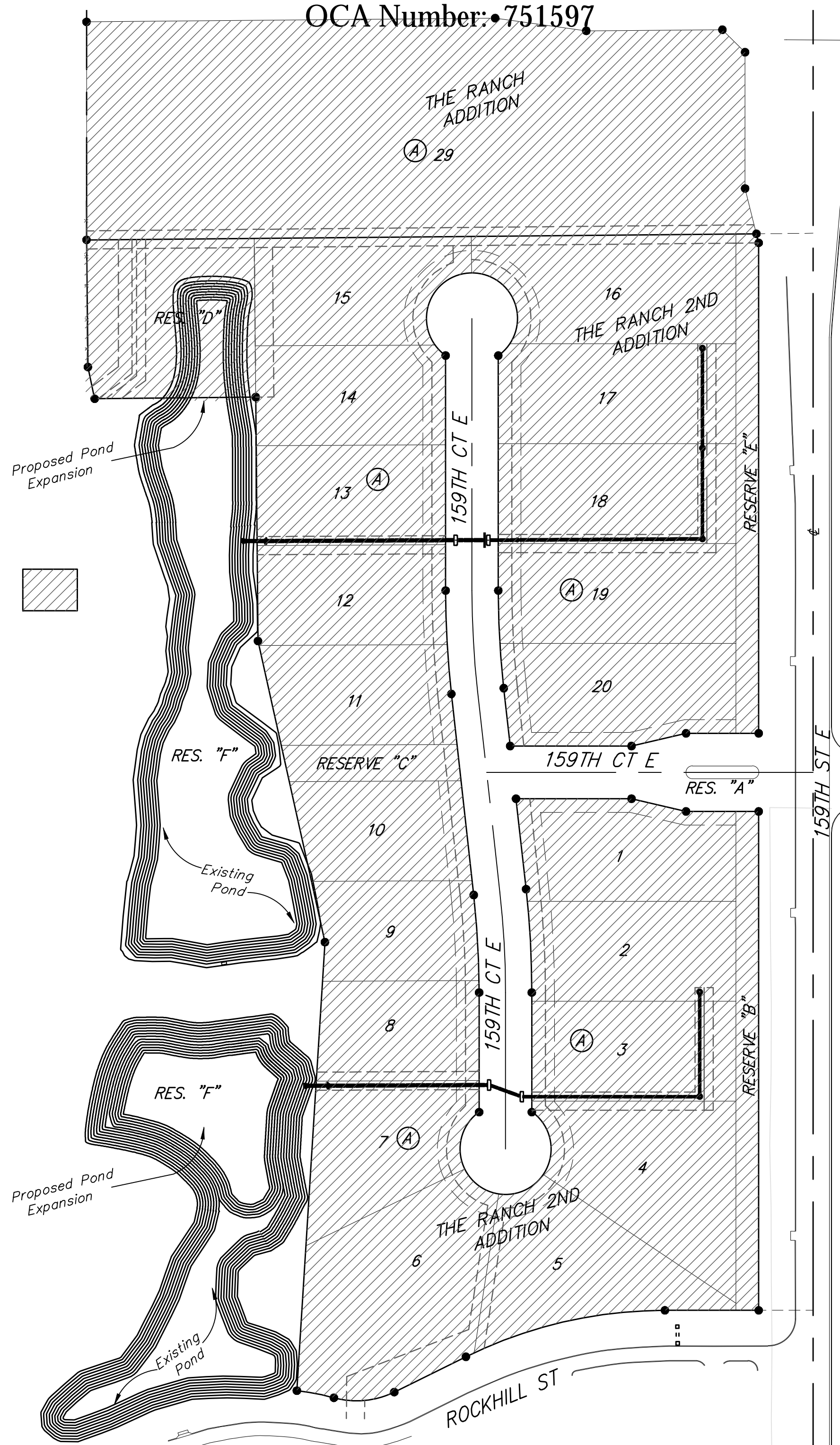
CITY OF WICHITA, KANSAS

Gary Janzen, P.E. City Engineer

Project Number:

468-2019-085432

OCA Number: 751597



BENCHMARKS

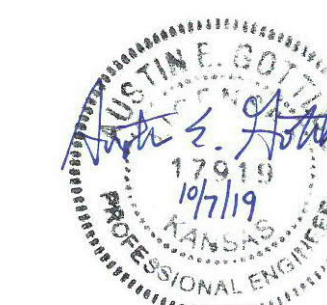
SHEET INDEX

Title Sheet	1
Line 1	2-3
Line 2	4-5
Mass Grading / Erosion Control	6-7
North Pond Plan	8
South Pond Plan	9
Erosion Control BMP Details	10-14
Mass Grading Typical Section	15
Std. Type 1A Curb Inlet Detail	16
Backyard Inlet Detail	17
Frame and Cover Details	18
Coordinate Sheet	19
Copy of Plat	20

Construction Sequence:

1. Sanitary Sewer by Other Contract
2. SWD Grading & Storm Sewer by This Contract
3. Water Project by Other Contract
4. Paving by Other Contract

Geotechnical Report Available.
Contact Design Engineer.



BENEFIT DISTRICT



Stormwater Certification:

New Development or Redevelopment

Stormwater Permit # SW 2014-0055

NOI Permit # S-AR94-1560

These construction plans were prepared in accordance with the current Stormwater management Regulations as set forth in the City of Wichita's Stormwater Management Ordinance 16.32 and the policies/guidelines presented in the Wichita/Sedgwick County Stormwater Manual.

Site Area (Acres) = 17.4 ac.

Disturbed Area (Acres) = 13.0 ac.

Water Quality Treatment: Wet Ponds

Downstream Channel Protection: Wet Ponds

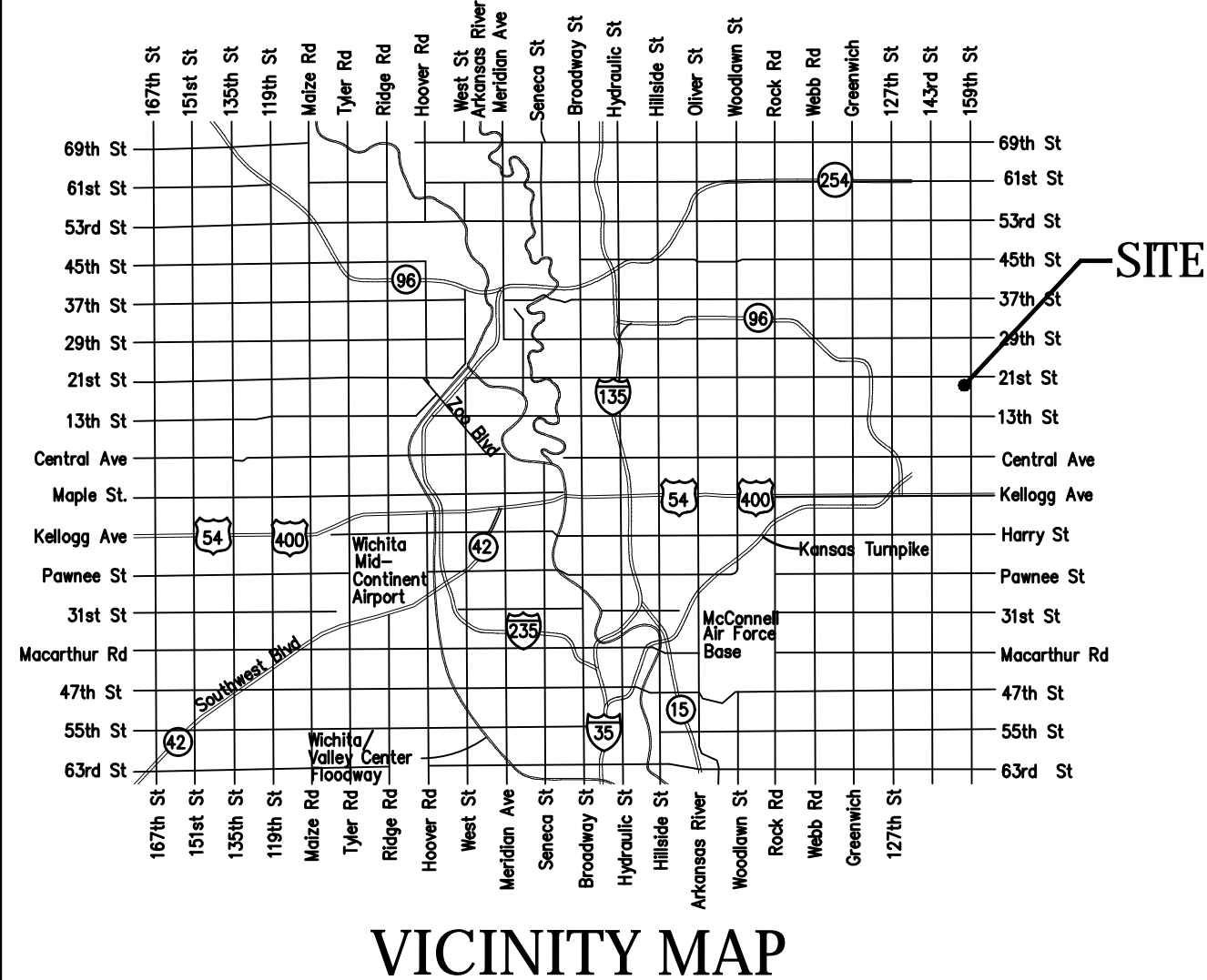
Detention: Wet Ponds

The BMP used for this development is Wet Ponds

EARTH WORK TOTALS (Unadjusted)

Project Totals	C.Y. EXCAVATION	C.Y. FILL
	27,700	34,660

No Contractor Borrow will be required. Earthwork Quantities reflect the best available topography. The Contractor shall satisfy himself with the earthwork quantities as bid for L.S. bid item "Grading, Mass" prior to bidding. No additional payments or change orders for earthwork will be accepted.



Baughman

Baughman Company, P.A. 315 Ellis St. Wichita, KS 67211 P 316-262-7271 F 316-262-0148
ENGINEERING | SURVEYING | PLANNING | LANDSCAPE ARCHITECTURE