

BENCHMARKS:
 #1: "X" CUT CHISELED ON CURB INLET, 8.9' S. & 27.5' W. OF THE NW COR., LOT 22, BLOCK 1, QUAIL CROSSING ADDITION, PHASE 2, 22.3' EAST OF @ N. 159TH ST. E. ELEV. = 1370.15 (NAVD88)
 #2: "X" CUT CHISELED ON CURB INLET, 13.2' S. & 60.1' E. OF THE NE COR., LOT 2, BLOCK A, THE RANCH 2ND ADDITION, 24.9' WEST OF @ N. 159TH ST. E. ELEV. = 1369.05 (NAVD88)

Sta. 0+00.0, Line 1
 Begin Construction of 24" RCP w/ End Section and 36.0 S.Y. of Light Stone Rip-Rap as Indicated. Contractor to restrain End Section and two last sections of pipe per City Specs. Top Elev. = 1356.60

POND DATA:
 STATIC POOL ELEVATION: 1356.5
 EXISTING BOTTOM ELEVATION: 1348.5
 PROPOSED BOTTOM ELEVATION: 1339.0
 100-YR ELEVATION: 1360.4

Existing pond slopes have been constructed with 12" clay liner (top 6" treated with Bentonite) and 6" of protective material over liner. Remove material and replace liner with newly Bentonite treated pond liner.

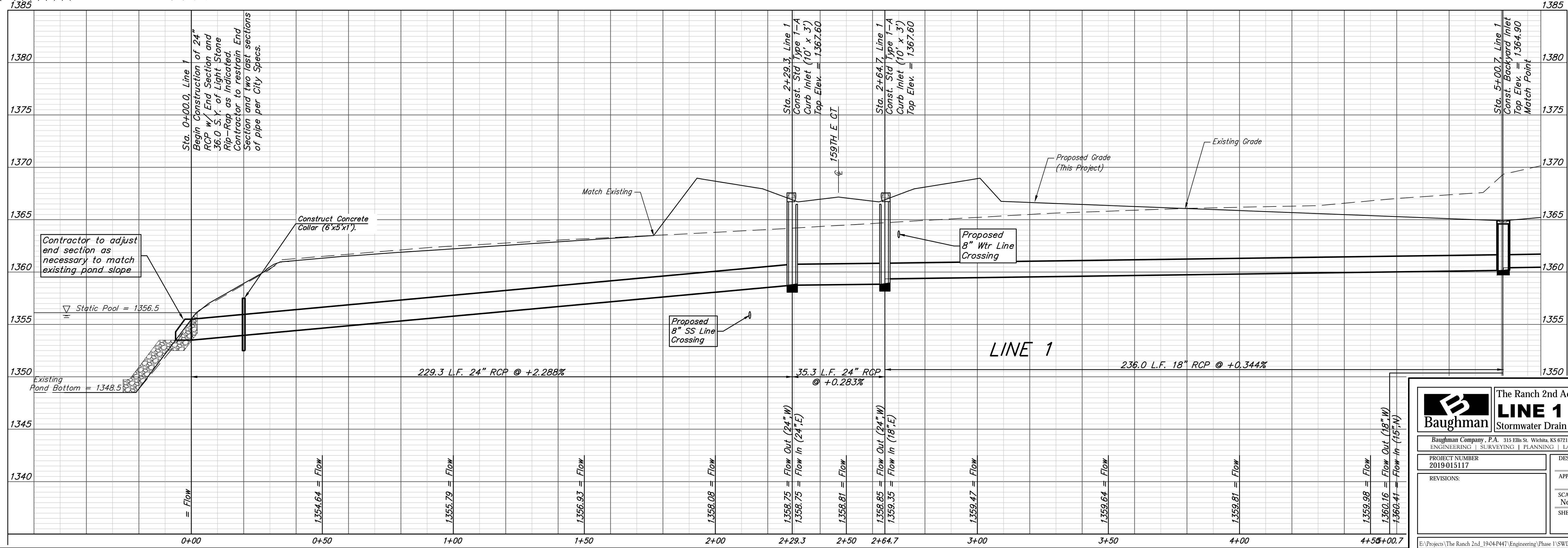
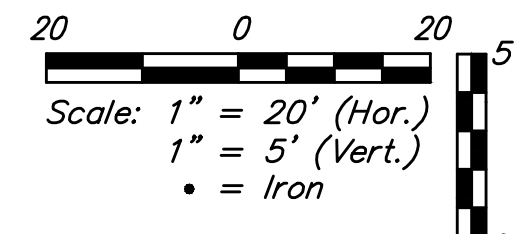
Existing trees which are in direct conflict with proposed new construction shall be removed by the Contractor ONLY with approval of the Engineer. Trees not in direct conflict with proposed new construction shall remain and be protected from damage. Cost shall be included in bid item "Site Clearing"

Sta. 2+29.3 of Sta. 2+64.7
 Install 35.3 L.F. Sand Backfill per City Specifications.

Sta. 2+29.3, Line 1
 Const. Std Type 1-A Curb Inlet (10' x 3')
 Top Elev. = 1367.60

Sta. 2+64.7, Line 1
 Const. Std Type 1-A Curb Inlet (10' x 3')
 Top Elev. = 1367.60

Sta. 5+00.7, Line 1
 Const. Backyard Inlet
 Top Elev. = 1364.90
 Match Point



Baughman The Ranch 2nd Addition
LINE 1
 Stormwater Drain Improvements

Baughman Company, P.A. 315 Ellis St. Wichita, KS 67211 P 316-262-7271 F 316-262-0149
 ENGINEERING | SURVEYING | PLANNING | LANDSCAPE ARCHITECTURE

PROJECT NUMBER: 2019-015117
 DESIGN: AEG
 DRAWN: HW
 APPROVED: [Signature]
 DATE: 10/07/19

REVISIONS:

SCALE: Noted
 SHEET: 2 OF 20