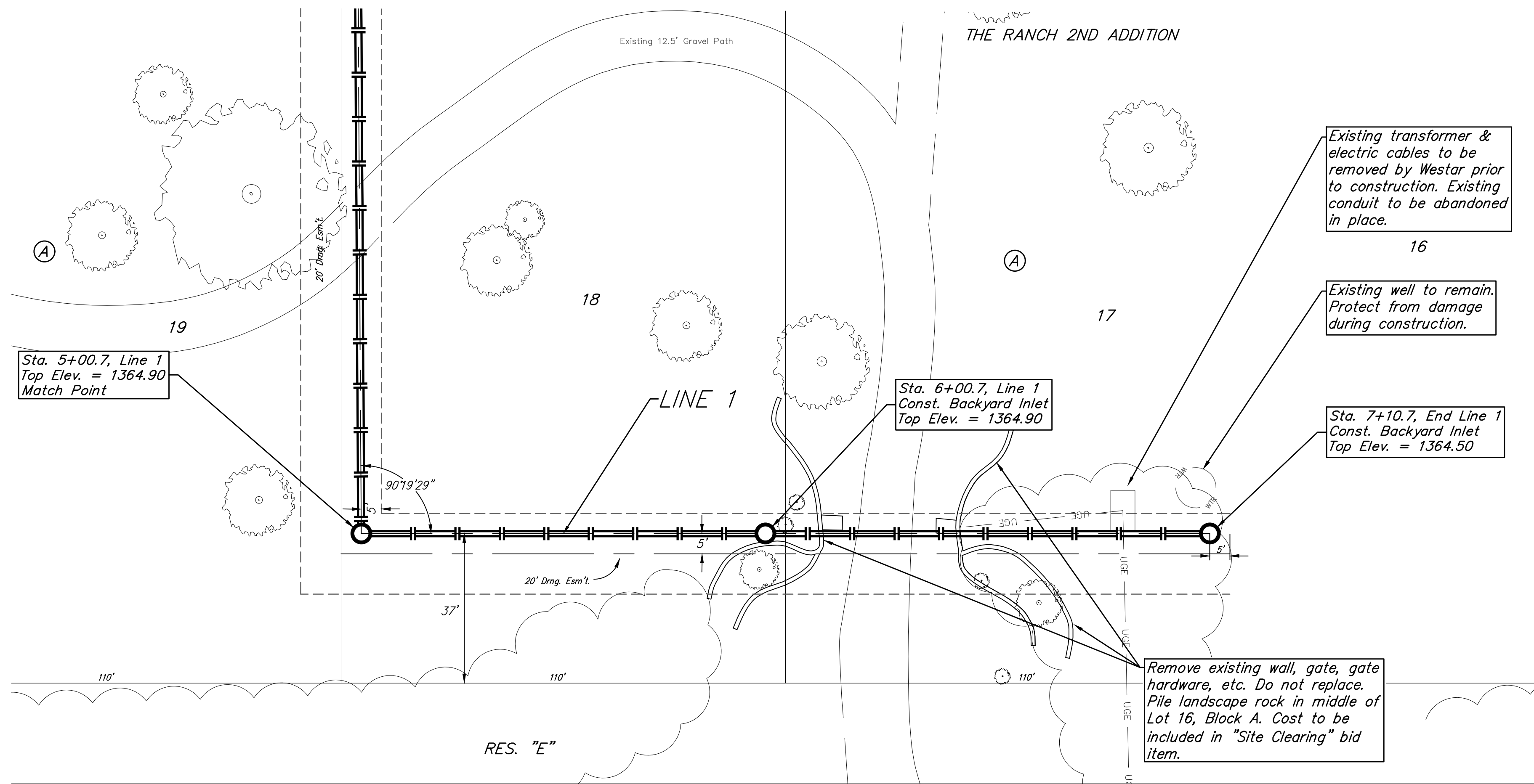
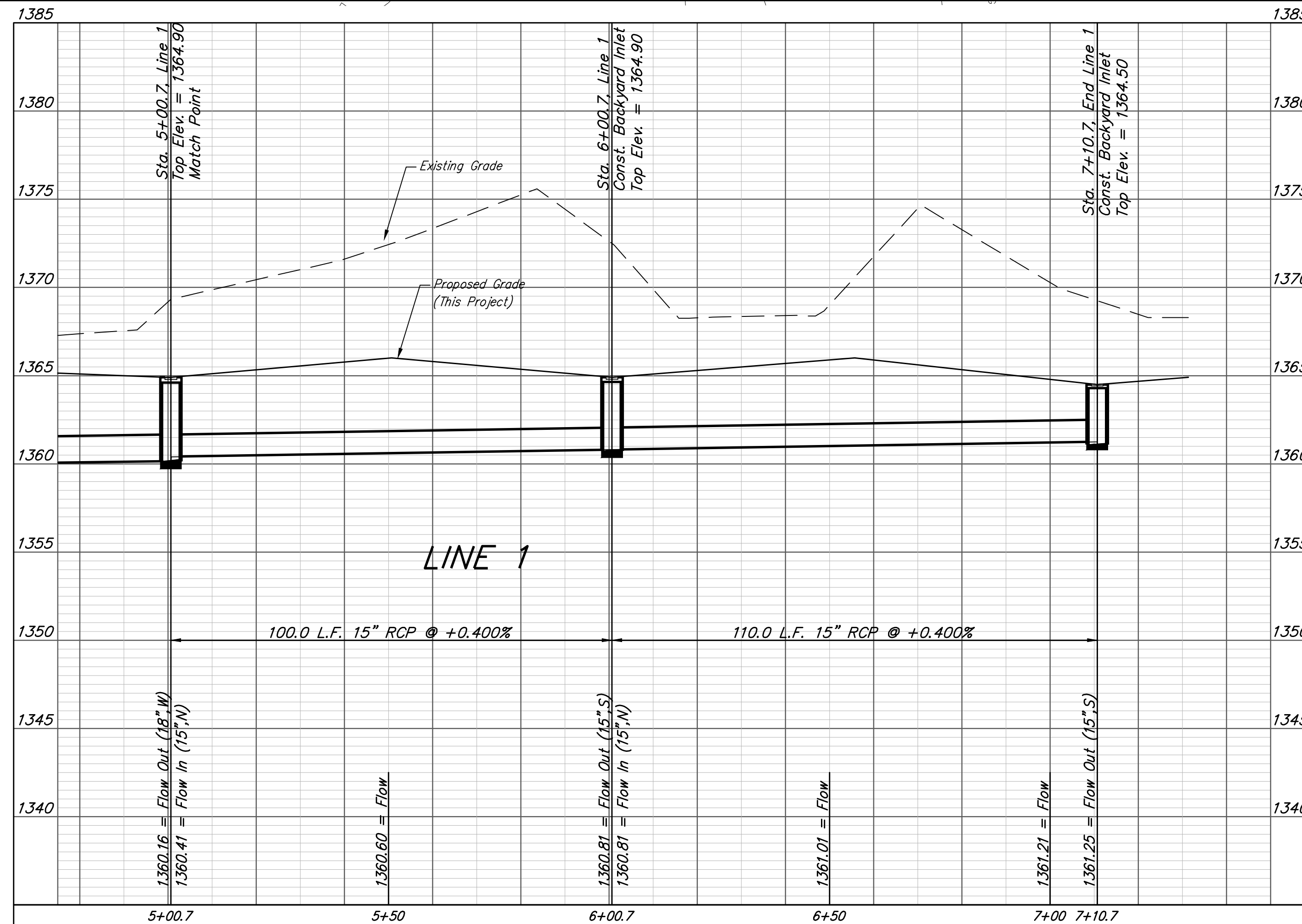
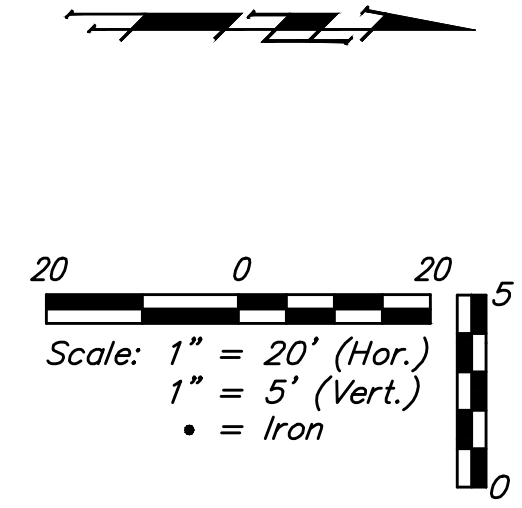


BENCHMARKS:
 #1: "X" CUT CHISELED ON CURB INLET,
 8.9' S. & 27.5' W. OF THE NW COR., LOT
 22, BLOCK 1, QUAIL CROSSING ADDITION,
 PHASE 2, 22.3' EAST OF @ N. 159TH ST. E.
 ELEV. = 1370.15 (NAVD88)

#2: "X" CUT CHISELED ON CURB INLET,
 13.2' S. & 60.1' E. OF THE NE COR., LOT
 2, BLOCK A, THE RANCH 2ND ADDITION,
 24.9' WEST OF @ N. 159TH ST. E.
 ELEV. = 1369.05 (NAVD88)



Existing trees which are in direct conflict with proposed new construction shall be removed by the Contractor ONLY with approval of the Engineer. Trees not in direct conflict with proposed new construction shall remain and be protected from damage. Cost shall be included in bid item "Site Clearing"



	The Ranch 2nd Addition	
	LINE 1	
Stormwater Drain Improvements		
<small>Baughman Company, P.A. 315 Ellis St. Wichita, KS 67211 P 316-262-7271 F 316-262-0149 ENGINEERING SURVEYING PLANNING LANDSCAPE ARCHITECTURE</small>		
PROJECT NUMBER 2019-015117	DESIGN AEG	DRAWN HW
REVISIONS:	APPROVED	DATE 10/07/19
	SCALE Noted	SHEET
	3 OF 20	