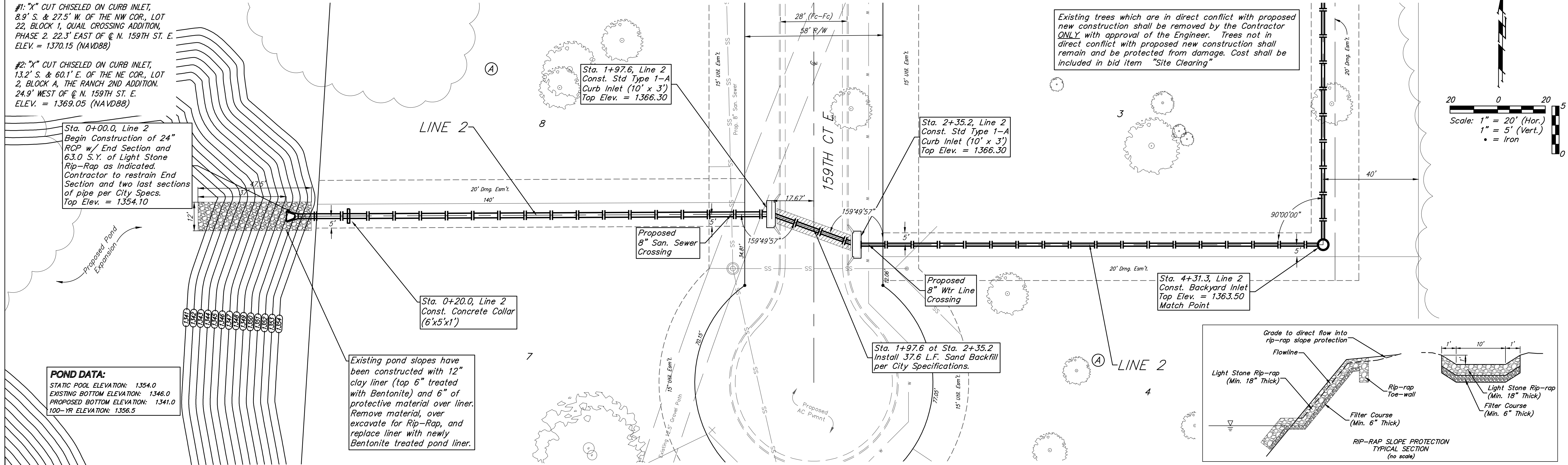


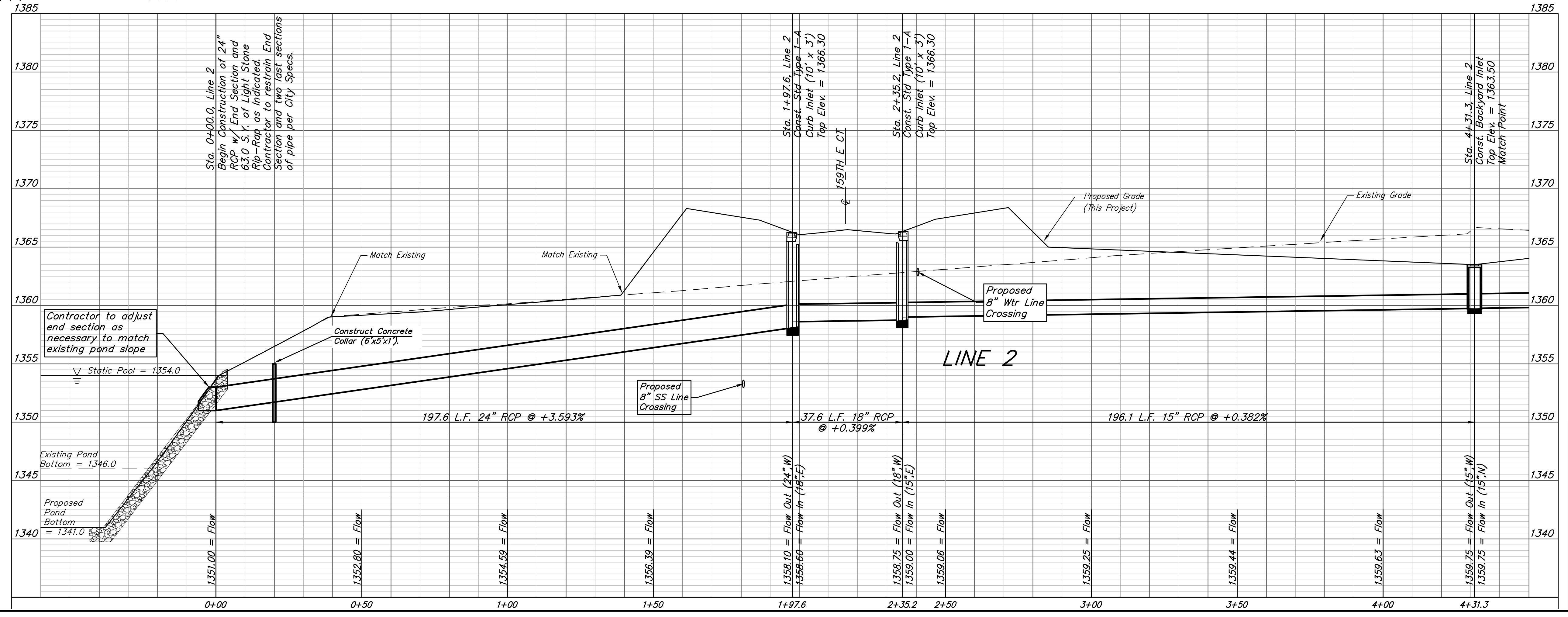
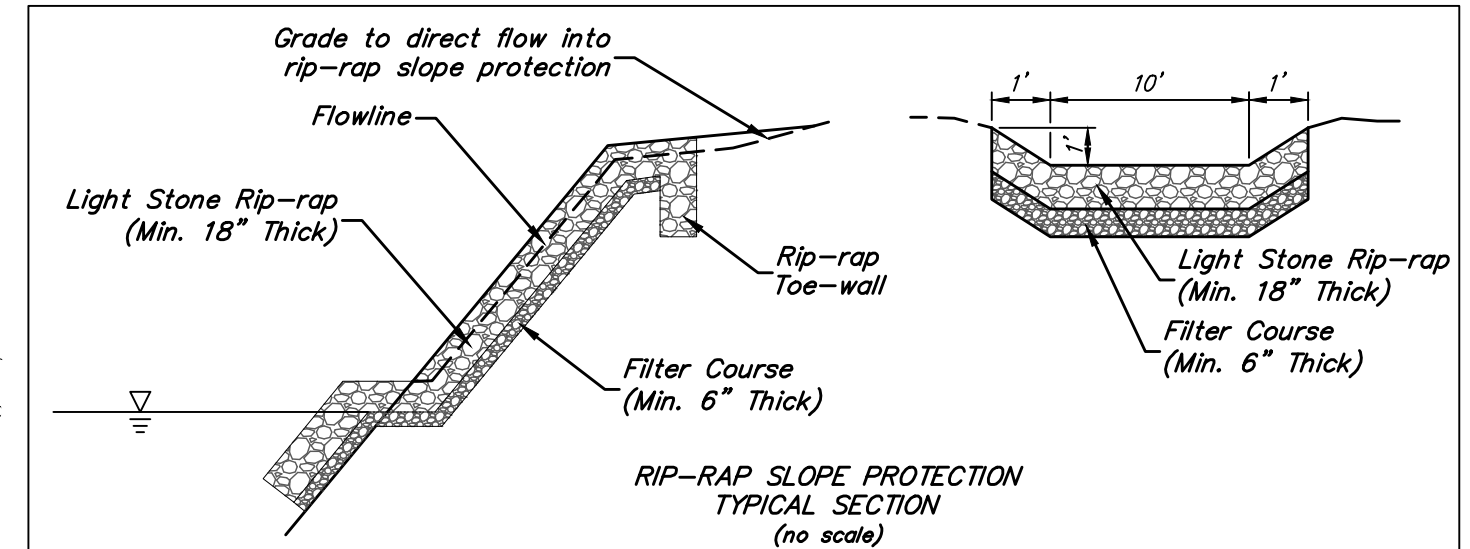
BENCHMARKS:
 #1: "X" CUT CHISELED ON CURB INLET,
 8.9' S. & 27.5' W. OF THE NW COR., LOT
 22, BLOCK 1, QUAIL CROSSING ADDITION,
 PHASE 2, 22.3' EAST OF @ N. 159TH ST. E.
 ELEV. = 1370.15 (NAVD88)
 #2: "X" CUT CHISELED ON CURB INLET,
 13.2' S. & 60.1' E. OF THE NE COR., LOT
 2, BLOCK A, THE RANCH 2ND ADDITION,
 24.9' WEST OF @ N. 159TH ST. E.
 ELEV. = 1369.05 (NAVD88)

THE RANCH 2ND ADDITION



POND DATA:
 STATIC POOL ELEVATION: 1354.0
 EXISTING BOTTOM ELEVATION: 1346.0
 PROPOSED BOTTOM ELEVATION: 1341.0
 100-YR ELEVATION: 1356.5

Existing pond slopes have been constructed with 12" clay liner (top 6" treated with Bentonite) and 6" of protective material over liner. Remove material, over excavate for Rip-Rap, and replace liner with newly Bentonite treated pond liner.



		The Ranch 2nd Addition	
		LINE 2	
		Stormwater Drain Improvements	
<small>Baughman Company, P.A. 315 Ellis St. Wichita, KS 67211 P 316-262-7271 F 316-262-0149 ENGINEERING SURVEYING PLANNING LANDSCAPE ARCHITECTURE</small>			
PROJECT NUMBER 2019-015117	DESIGN AEG	DRAWN HW	DATE 10/07/19
REVISIONS:	APPROVED	SCALE Noted	SHEET
		4 OF 20	

E:\Projects\The Ranch 2nd_1904\PH47\Engineering\Phase 1\SWD\SWS PLANS.dwg