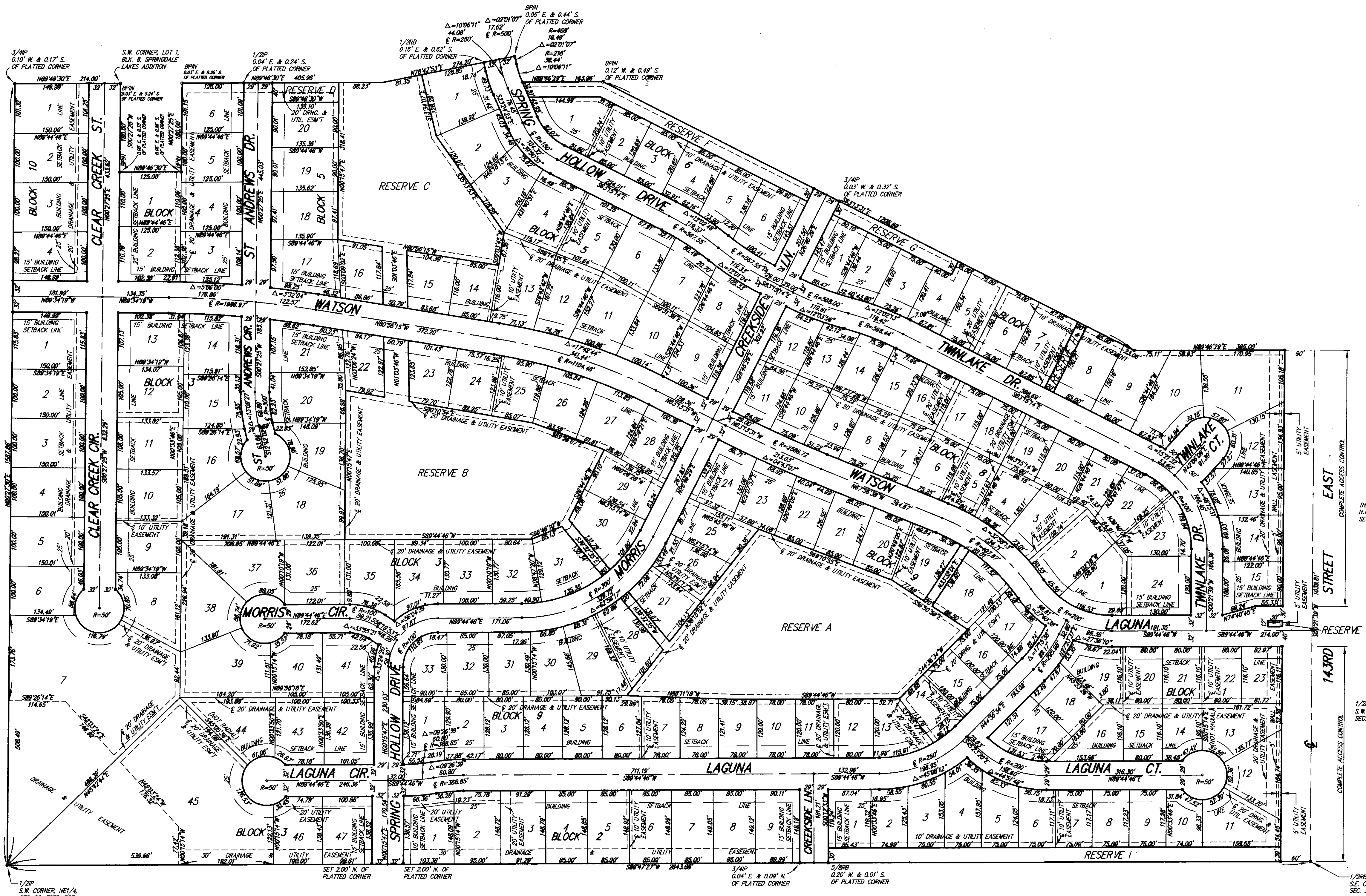


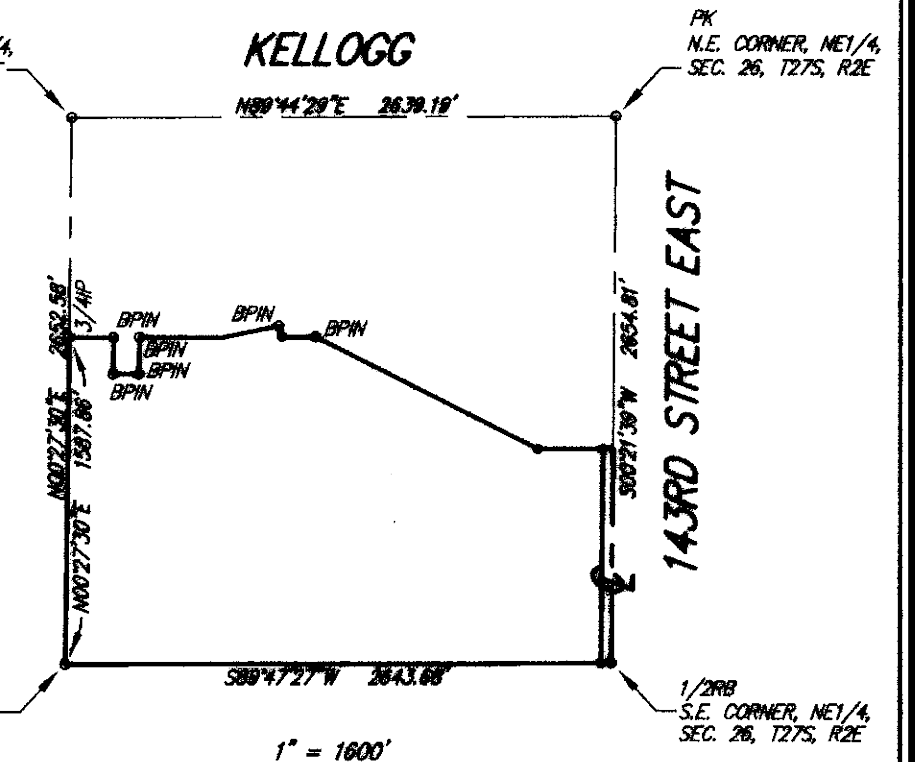
CLEAR CREEK ADDITION

Wichita, Sedgwick County, Kansas

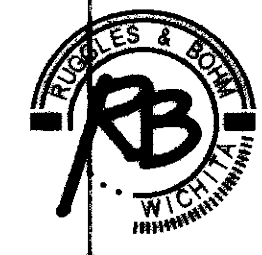


- SURVEY MARKER LEGEND**
- THIMBLE = 5/8" REBAR IN THIMBLE (FOUND)
 - 1/2"IP = 1/2" IRON PIPE (FOUND)
 - 3/4"IP = 3/4" IRON PIPE (FOUND)
 - 5/8"IP = 5/8" REBAR (FOUND)
 - BPM = 5/8" REBAR W/ BAUGHMAN CAP (FOUND)
 - PK = PK NAIL W/ MARK WASHER (FOUND)
 - = 5/8" REBAR W/ RAD CAP (SET)

BENCH MARK: R.R. SPINE WEST FACE POWER POLE 30 FEET WEST OF THE S.E. CORNER, SEC 16, T27S, R2E ELEV. = 1314.00 NGVD



SHEET 2 OF 2



Ruggles & Bohm, P.A.
 Engineering, Surveying, Land Planning
 924 North Main (316) 264-8008
 Wichita, Kansas 67203 (316) 264-4621 fax
 www.rtkansas.com E-mail: info@rtkansas.com

DWG FILE: 2266P-W.C. PROJECT NO. 02K02286P APRIL 9, 2003

GARVER
 © 2018 GARVER, L.L.C.
 THIS DOCUMENT, ALONG WITH THE IDEAS AND DESIGNS CONVEYED HEREIN, SHALL BE CONSIDERED INSTRUMENTS OF PROFESSIONAL SERVICE AND ARE PROPERTY OF GARVER, L.L.C. ANY USE, REPRODUCTION, OR DISTRIBUTION OF THIS DOCUMENT, ALONG WITH THE IDEAS AND DESIGN CONTAINED HEREIN, IS PROHIBITED UNLESS AUTHORIZED IN WRITING BY GARVER, L.L.C. OR EXPLICITLY ALLOWED IN THE GOVERNING PROFESSIONAL SERVICES AGREEMENT FOR THIS WORK.

8535 E. 21st Street N.
 Wichita, KS 67206
 (316) 264-8008



REV.	DATE	DESCRIPTION

CITY OF WICHITA
 WICHITA, KANSAS
CLEAR CREEK
 ADD. PLAT
 PHASE 5 - WATER

CLEAR CREEK ADD. PLAT

JOB NO.: 18267009
 DATE: SEPT. 2019
 DESIGNED BY: .
 DRAWN BY: .

BAR IS ONE INCH ON ORIGINAL DRAWING
 IF NOT ONE INCH ON THIS SHEET, ADJUST SCALES ACCORDINGLY.
 DRAWING NUMBER

Files: I:\2018\18267009 - clear_creek_ph 5 engineering\Drawings\CAD\18267009-PLATS.dwg. Last Save: 10/23/2019 3:24 PM. Last saved by: DRStandrich. Label plotted by: Glover, Eric J. Plot Style: ---. Plot Scale: 1:2,500. Plot Date: 10/25/2019 12:06 PM. Plotter used: None.