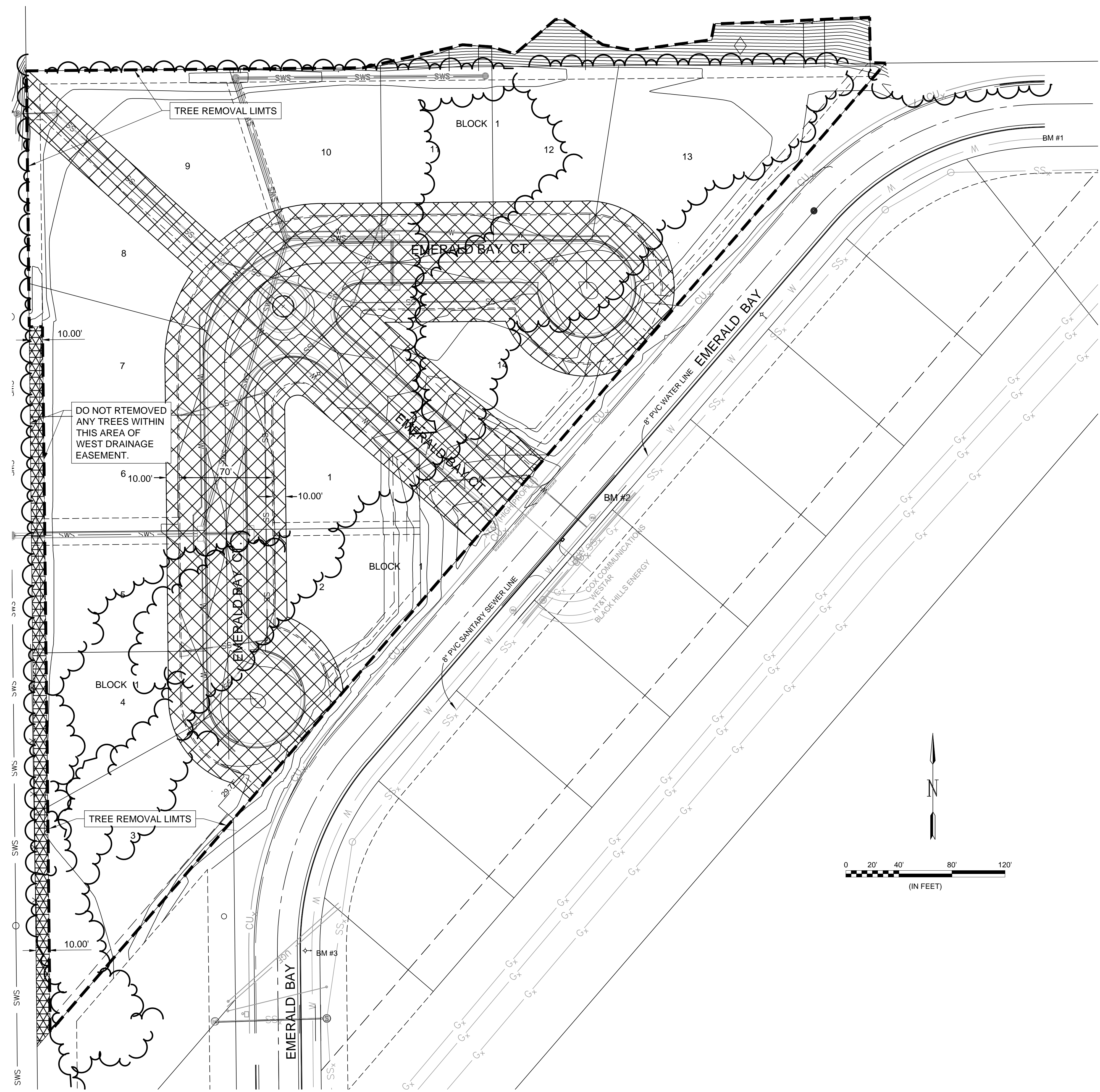

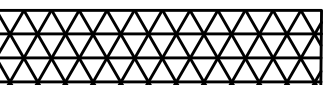



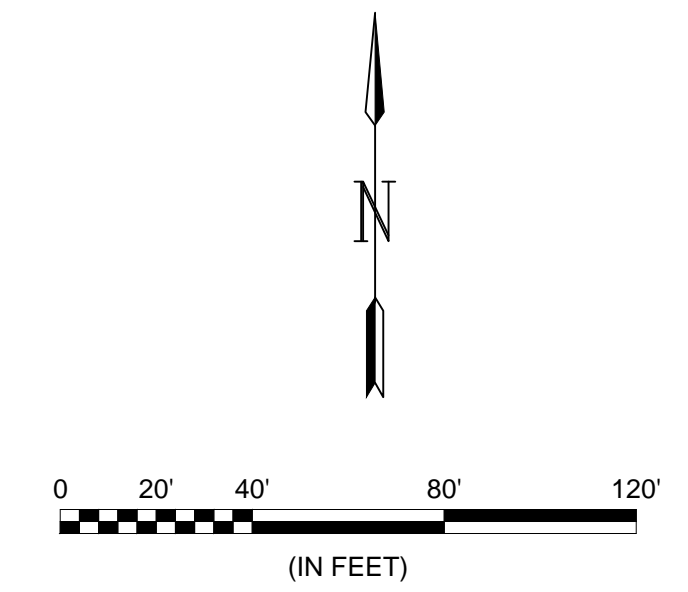
File: L:\2019\19T41004 - Emerald Bay 5th Add Ph 1\Drawings\CSD\19T41004-EROSION CONTROL.dwg Last Save: 10/15/2019 1:16 PM Last saved by: DRStandrich
 Last plotted by: Standrich, Darryl R. Plot Style: --- Plot Scale: 1:2.5849 Plot Date: 10/15/2019 1:19 PM Plotter used: None



DO NOT REMOVE ANY TREES WITHIN THIS AREA OF WEST DRAINAGE EASEMENT.

LEGEND


-  ALL TREES WITHIN AREA SHOWN TO BE REMOVED WITH THE SANITARY SEWER PROJECT.
-  NO TREES WITHIN THIS AREA OF THE WEST DRAINAGE EASEMENT SHALL BE REMOVED.
-  ALL REMAINING TREES WITHIN MARKED AREA SHALL BE REMOVED WITH THIS PAVING PROJECT. SEE SHEET 3 FOR BURN PILE LOCATION.
- ALL TREE REMOVAL AND DISPOSAL ARE SUBSIDIARY TO THE BID ITEM "SITE CLEARING."




© 2019 GARVER, LLC
 THIS DOCUMENT, ALONG WITH THE IDEAS AND DESIGNS CONVEYED HEREIN, SHALL BE CONSIDERED INSTRUMENTS OF PROFESSIONAL SERVICE AND ARE PROPERTY OF GARVER, LLC. ANY USE, REPRODUCTION, OR DISTRIBUTION OF THIS DOCUMENT, ALONG WITH THE IDEAS AND DESIGN CONTAINED HEREIN, IS PROHIBITED UNLESS AUTHORIZED IN WRITING BY GARVER, LLC OR EXPLICITLY ALLOWED IN THE GOVERNING PROFESSIONAL SERVICES AGREEMENT FOR THIS WORK.

8535 E. 21st St. N.
 Suite 130
 Wichita, KS 67206
 (316) 264-8008

REV.	DATE	DESCRIPTION	BY



CITY OF WICHITA
 WICHITA, KANSAS

EMERALD BAY 5th ADD.
 PHASE 1 - PAVING

SITE CLEARING

JOB NO.: 19T41004
 DATE: OCT. 2019
 DESIGNED BY: EJJ
 DRAWN BY: DRS

BAR IS ONE INCH ON ORIGINAL DRAWING
 IF NOT ONE INCH ON THIS SHEET, ADJUST SCALES ACCORDINGLY.

DRAWING NUMBER

SHEET NUMBER **2** OF **39**