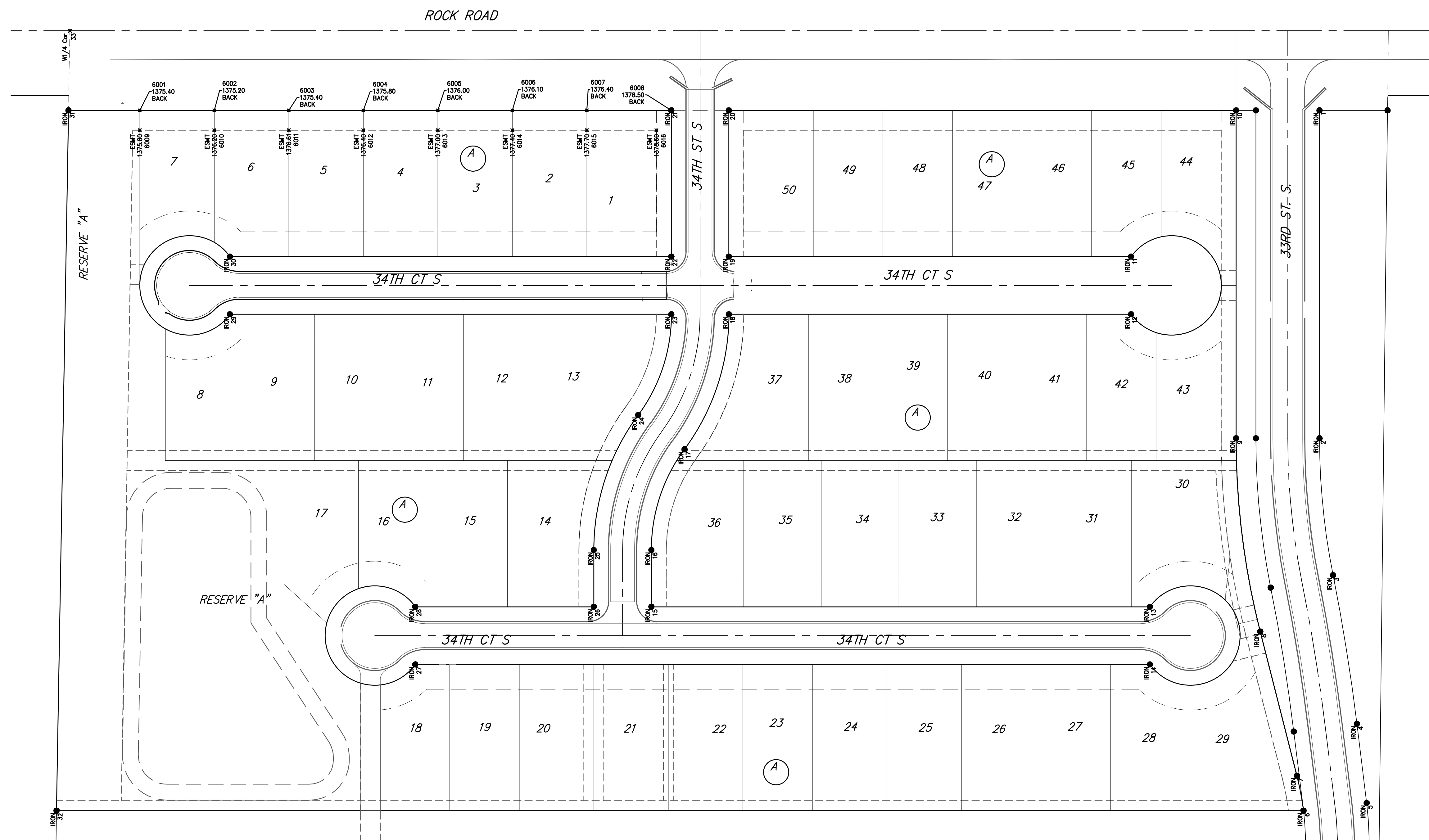
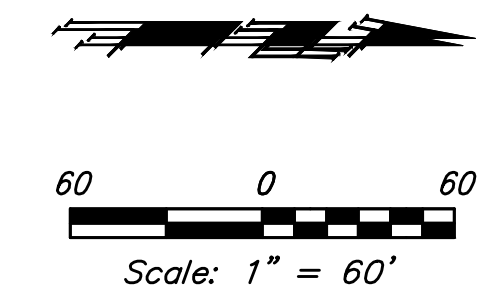


BENCHMARKS:
BM #1: "□" on Fence Footing under warning US Air Force Installation Sign West of Rock Road, 400' N. of W 1/2 Cor. Elev. = 1377.45 NAVD88

BM #2: Cross cut in top of curb West end of southwest curb return, 34th & 34th Ct. (Lots 1-13, Block A) Elev. = 1379.36 NAVD88

BM #3: Cross cut in top of curb North end of north curb return, 34th & 34th Ct. (Lots 22-36, Block A) Elev. = 1377.16 NAVD88



Control Points			
Point #	Northing	Easting	Description
1	21,257.89	10,080.00	IRON
2	21,257.89	10,410.11	IRON
3	21,271.48	10,547.88	IRON
4	21,295.54	10,697.55	IRON
9	21,173.89	10,410.11	IRON
10	21,173.89	10,080.00	IRON
20	20,663.39	10,080.00	IRON
21	20,605.39	10,080.00	IRON
22	20,605.39	10,227.25	IRON
23	20,605.39	10,285.25	IRON
24	20,572.05	10,386.70	IRON
30	20,161.12	10,227.25	IRON

Easement Grading				
Point #	Northing	Easting	Elevation	Description
6001	20,070.3903	10,079.9999	1375.40	BACK
6002	20,145.3903	10,079.9999	1375.20	BACK
6003	20,220.3903	10,079.9998	1375.40	BACK
6004	20,295.3903	10,079.9998	1375.80	BACK
6005	20,370.3903	10,079.9997	1376.00	BACK
6006	20,445.3903	10,079.9996	1376.10	BACK
6007	20,520.3903	10,079.9996	1376.40	BACK
6008	20,605.3903	10,079.9995	1378.50	BACK
6009	20,070.3903	10,099.9999	1375.80	ESMT
6010	20,145.3903	10,099.9999	1376.20	ESMT
6011	20,220.3903	10,099.9998	1376.61	ESMT
6012	20,295.3903	10,099.9998	1376.40	ESMT
6013	20,370.3903	10,099.9997	1377.00	ESMT
6014	20,445.3903	10,099.9996	1377.40	ESMT
6015	20,520.3903	10,099.9996	1377.70	ESMT
6016	20,590.3903	10,099.9995	1378.60	ESMT

Rocky Ford Addition - Phase 2A

COORDINATES

Street Improvements

Baughman Company, P.A. 315 Ellis St. Wichita, KS 67211 P 316-262-7271 F 316-262-0149
 ENGINEERING | SURVEYING | PLANNING | LANDSCAPE ARCHITECTURE

PROJECT NUMBER 472-2019-085558	DESIGN AEG	DRAWN JAK
REVISIONS:	APPROVED	DATE 10/23/19
	SCALE Noted	SHEET 15 OF 16