

AS-BUILT
10/15/2019 5:11:19 PM

Issue	Date	By	Description
0	1-28-2019	KLH	ISSUE FOR CONSTRUCTION
1	1-30-2019	KLH	REVISED PER CITY COMMENTS

Drawn By: _____ Date: 1/30/2019
Checked By: _____ Issue No. 1



Client: **WELCOME HOME**
5111 S. Meridian
Wichita, KS 67217

Client: **SOUTHBOROUGH ESTATES PHASE 2**

SITE PLAN

WICHITA, KANSAS

Sheet No. **SS101**

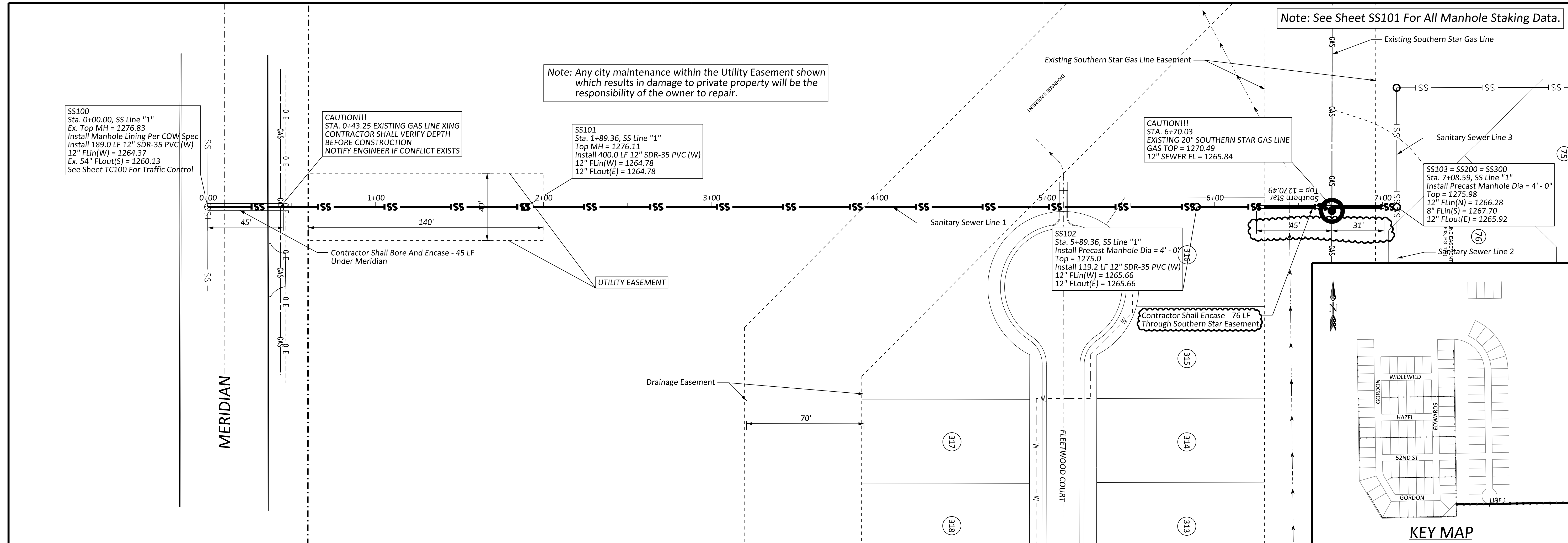
Project No. **2129**

SANITARY SEWER STAKING POINTS

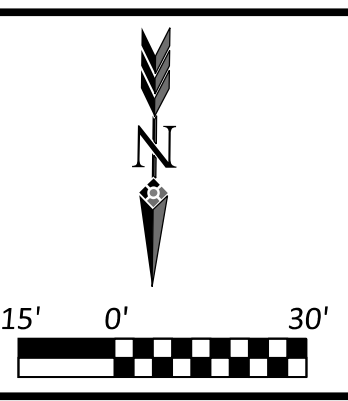
Point	Northing	Easting	Description
SS100	1653753.4000	1639558.4800	EX. MANHOLE MERIDIAN
SS101	1653750.7000	1639369.1400	MANHOLE
SS102	1653744.9996	1638969.1806	MANHOLE
SS103	1653743.3004	1638849.9601	MANHOLE
SS200	1653743.3004	1638849.9601	SS102
SS201	1653907.3786	1638847.2120	MANHOLE
SS202	1654043.6095	1638844.9303	MANHOLE
SS203	1654147.3449	1638843.1929	MANHOLE
SS204	1654142.3210	1638543.2350	MANHOLE
SS205	1654137.7995	1638273.2728	MANHOLE
SS206	1654380.1312	1638269.2141	MANHOLE
SS300	1653743.3004	1638849.9601	SS200
SS301	1653672.4115	1638851.1474	MANHOLE
SS302	1653665.0119	1638409.3453	MANHOLE
SS303	1653813.1771	1638320.4491	MANHOLE
SS400	1654147.3449	1638843.1929	SS204
SS401	1654387.3113	1638839.1737	MANHOLE
SS402	1654662.2727	1638834.5685	MANHOLE
SS500	1653907.3786	1638847.2120	SS201
SS501	1653900.9312	1638462.2660	MANHOLE
SS600	1654387.3113	1638839.1737	SS401
SS601	1654380.8639	1638454.2277	MANHOLE
SS700	1654137.7995	1638273.2728	SS205
SS701	1653960.1901	1638276.2476	MANHOLE
SS800	1654626.7500	1638262.8100	EX. MANHOLE
SS801	1654470.0805	1638265.4340	MANHOLE

CONTROL POINTS

Point	Northing	Easting	Elevation	Description
1	1655230.0550	1638260.0150	1275.3050	REBAR NO CAP
2	1654330.2930	1638260.8510	1273.5610	REBAR NO CAP
3	1654914.3330	1639225.2350	1277.5140	REBAR NO CAP
4	1653034.5060	1638310.4940	1273.6450	REBAR NO CAP
5	1653048.2130	1638897.3890	1274.1910	REBAR NO CAP
10	1655044.9380	1638795.0340	1275.6750	UNKNOWN



Note: See Sheet SS101 For All Manhole Staking Data.



Issue	Date	By	Description
0	1-28-2019	KLH	ISSUE FOR CONSTRUCTION
1	1-30-2019	KLH	REVISED PER CITY COMMENTS
2	3-07-2019	KLH	ADDED ENCASUREMENT THROUGH SOUTHERN STAR EASEMENT

Drawn By:
 Checked By:
 Date: 3/7/2019
 Issue No. 2

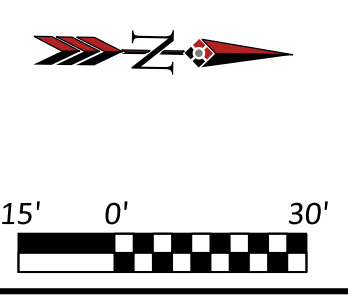


Client: **WELCOME HOME**
5111 S. Meridian,
Wichita, KS 67217

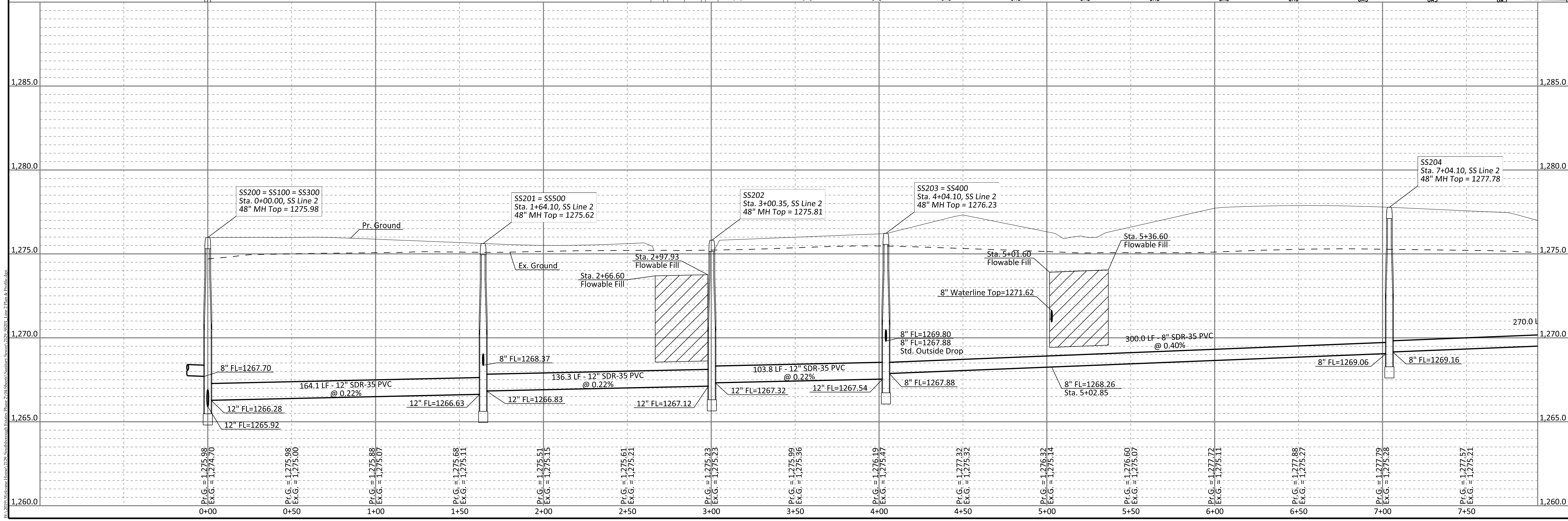
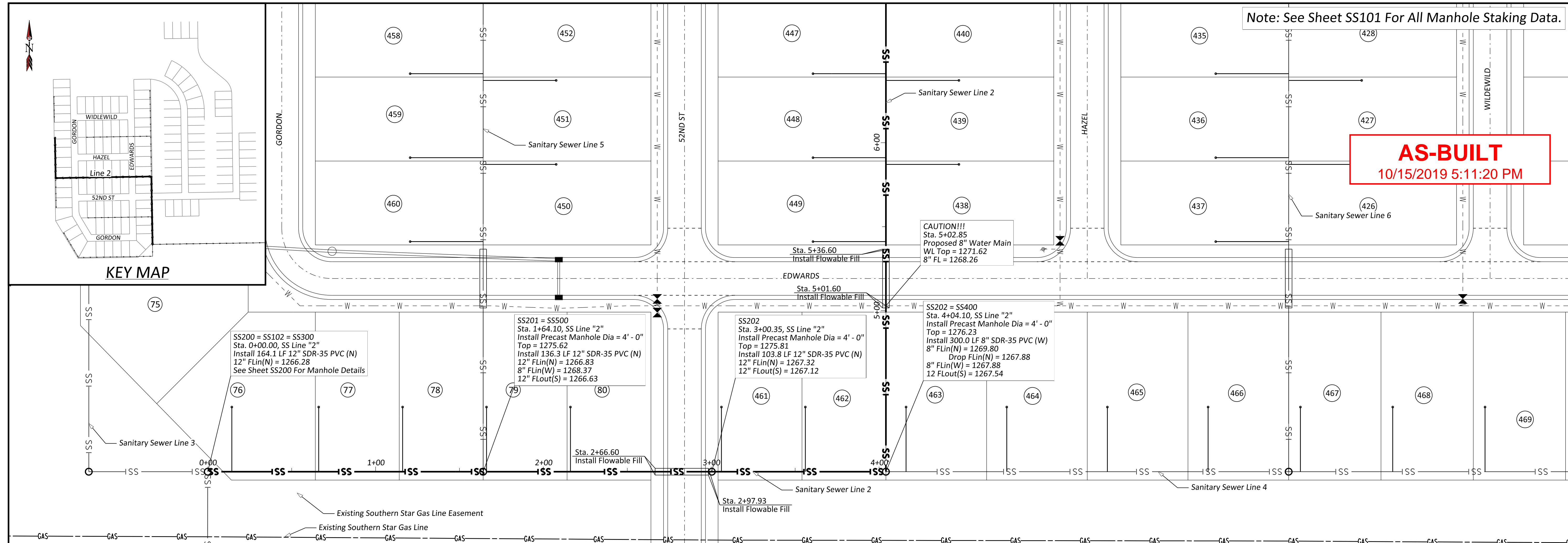
SOUTHBOROUGH ESTATES PHASE 2
SANITARY SEWER LINE "1" PLAN & PROFILE
WICHITA, KANSAS

Sheet No. **SS200**
Project No. **2129**

Note: See Sheet SS101 For All Manhole Staking Data.



AS-BUILT
10/15/2019 5:11:20 PM



Issue	Date	By	Description
0	1-28-2019	KLH	ISSUE FOR CONSTRUCTION
1	1-30-2019	KLH	REVISED PER CITY COMMENTS

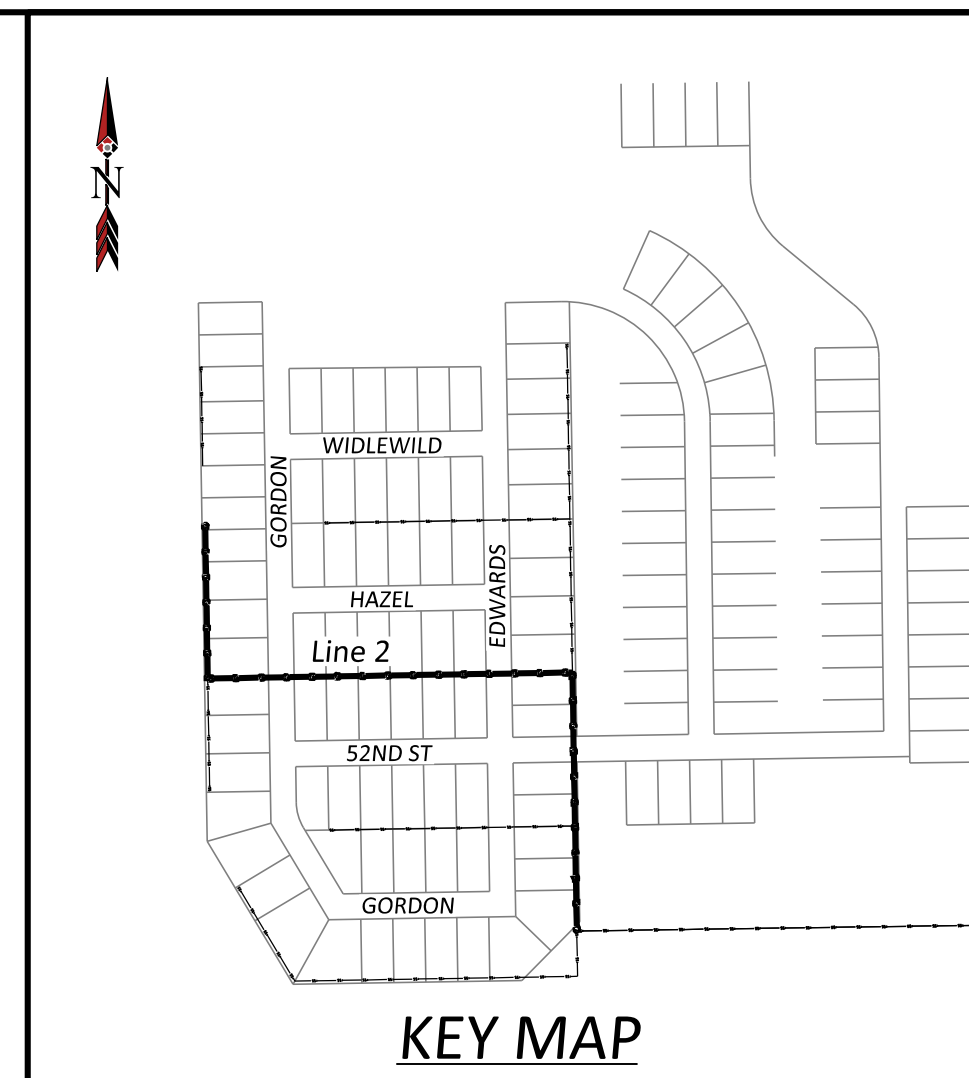
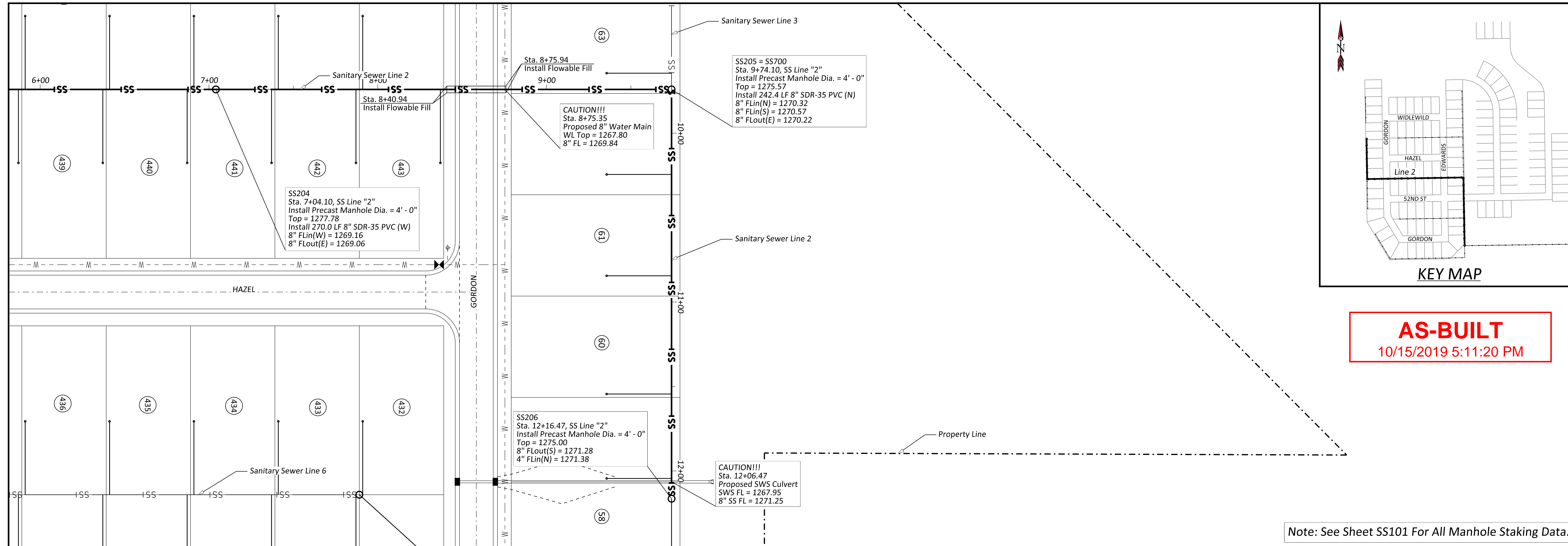
Drawn By: _____ Date: 1/30/2019
 Checked By: _____ Issue No. 1

ASCM Engineering Consultants
 202 E. Woodside Ave., P.O. Box 452 | Andover, KS 66002
 P: (913) 960-9955 | F: (913) 960-9951 | www.ascm.com

Client: **WELCOME HOME**
 5111 S. Meridian,
 Wichita, KS 67217

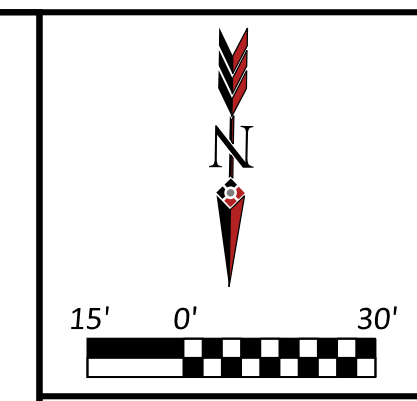
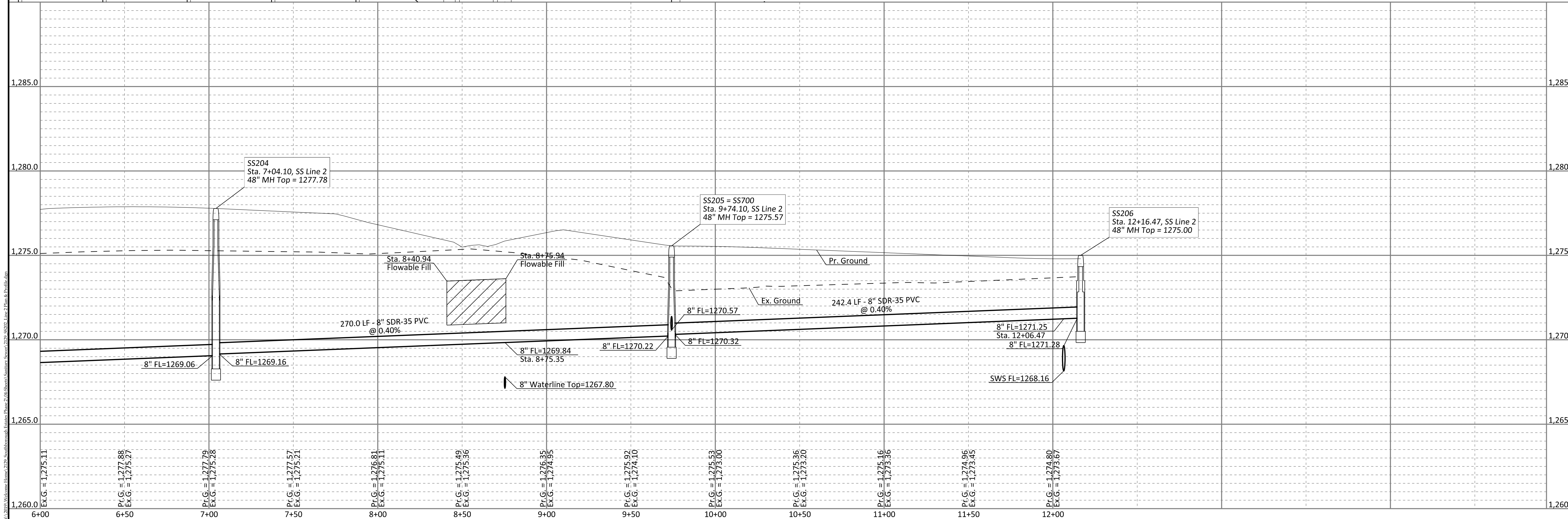
SOUTHBOROUGH ESTATES PHASE 2
SANITARY SEWER LINE "2"
PLAN & PROFILE
 WICHITA, KANSAS

Sheet No. **SS201**
 Project No. **2129**



AS-BUILT
10/15/2019 5:11:20 PM

Note: See Sheet SS101 For All Manhole Staking Data.



Issue	Date	By	Description
0	1-28-2019	KLH	ISSUE FOR CONSTRUCTION
1	1-30-2019	KLH	REVISED PER CITY COMMENTS

Drawn By: _____ Date: 1/30/2019
Checked By: _____ Issue No. 1

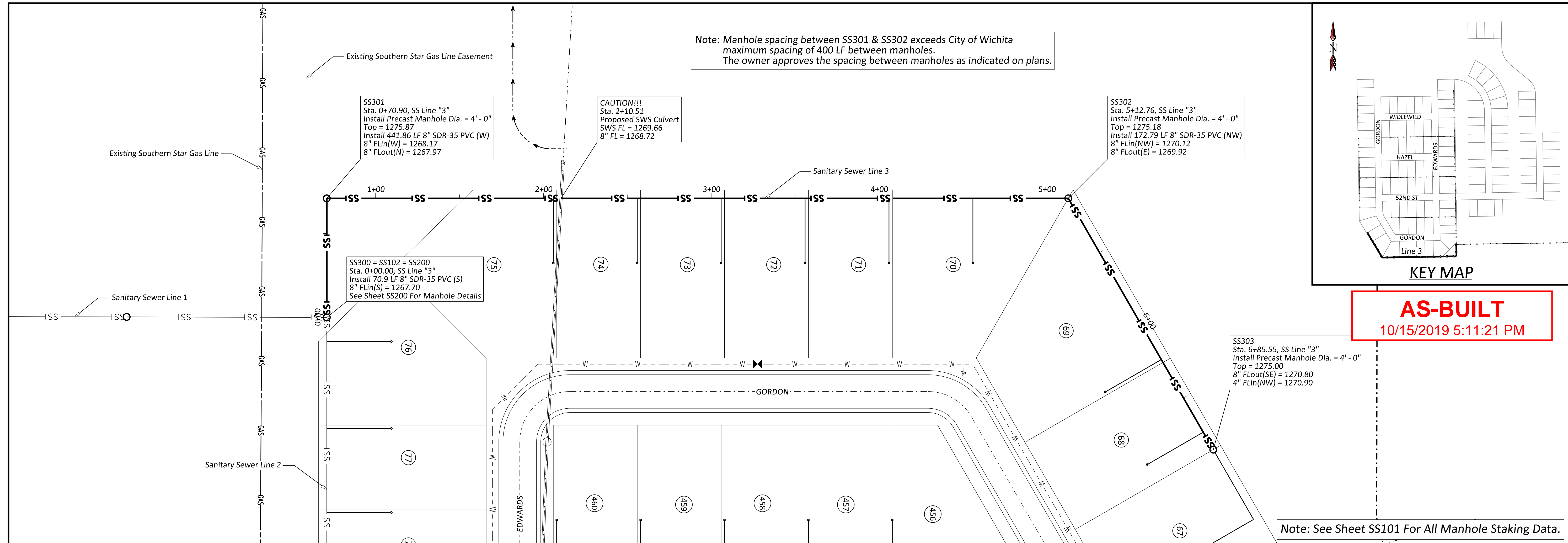


Client:
WELCOME HOME
5111 S. Meridian,
Wichita, KS 67217

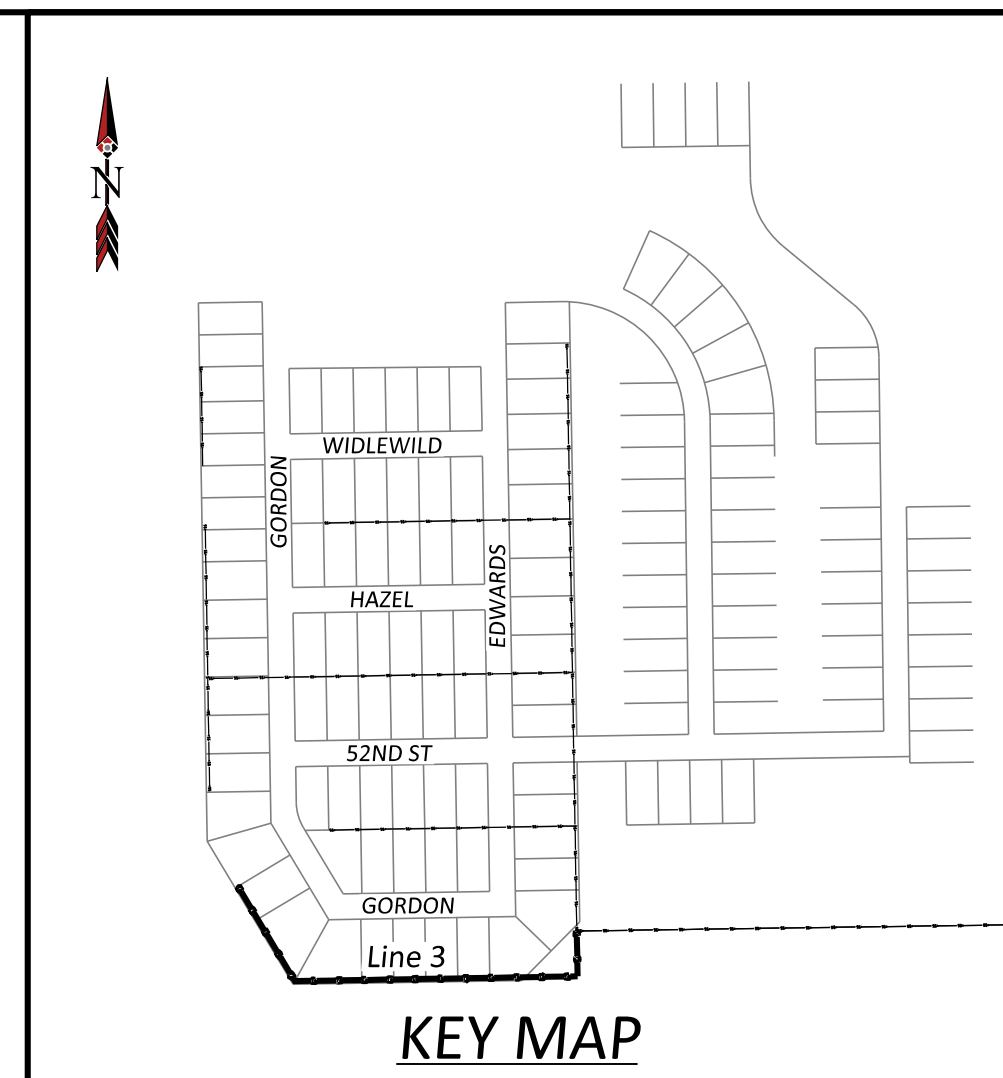
SOUTHBOROUGH ESTATES PHASE 2
**SANITARY SEWER
LINE "2"
PLAN & PROFILE**
WICHITA, KANSAS

Sheet No.
SS202

Project No.
2129

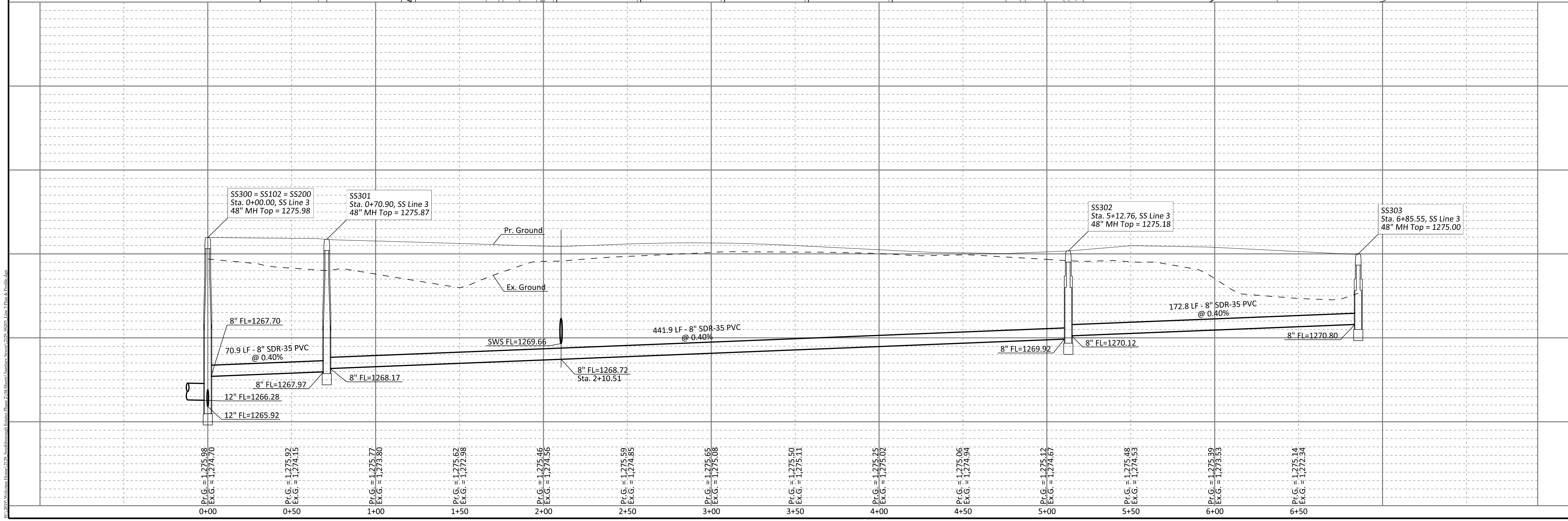


Note: Manhole spacing between SS301 & SS302 exceeds City of Wichita maximum spacing of 400 LF between manholes. The owner approves the spacing between manholes as indicated on plans.



AS-BUILT
10/15/2019 5:11:21 PM

Note: See Sheet SS101 For All Manhole Staking Data.







Issue	Date	By	Description
0	1-28-2019	KLH	ISSUE FOR CONSTRUCTION
1	1-30-2019	KLH	REVISED PER CITY COMMENTS

Drawn By: _____ Date: 1/30/2019
Checked By: _____ Issue No. 1

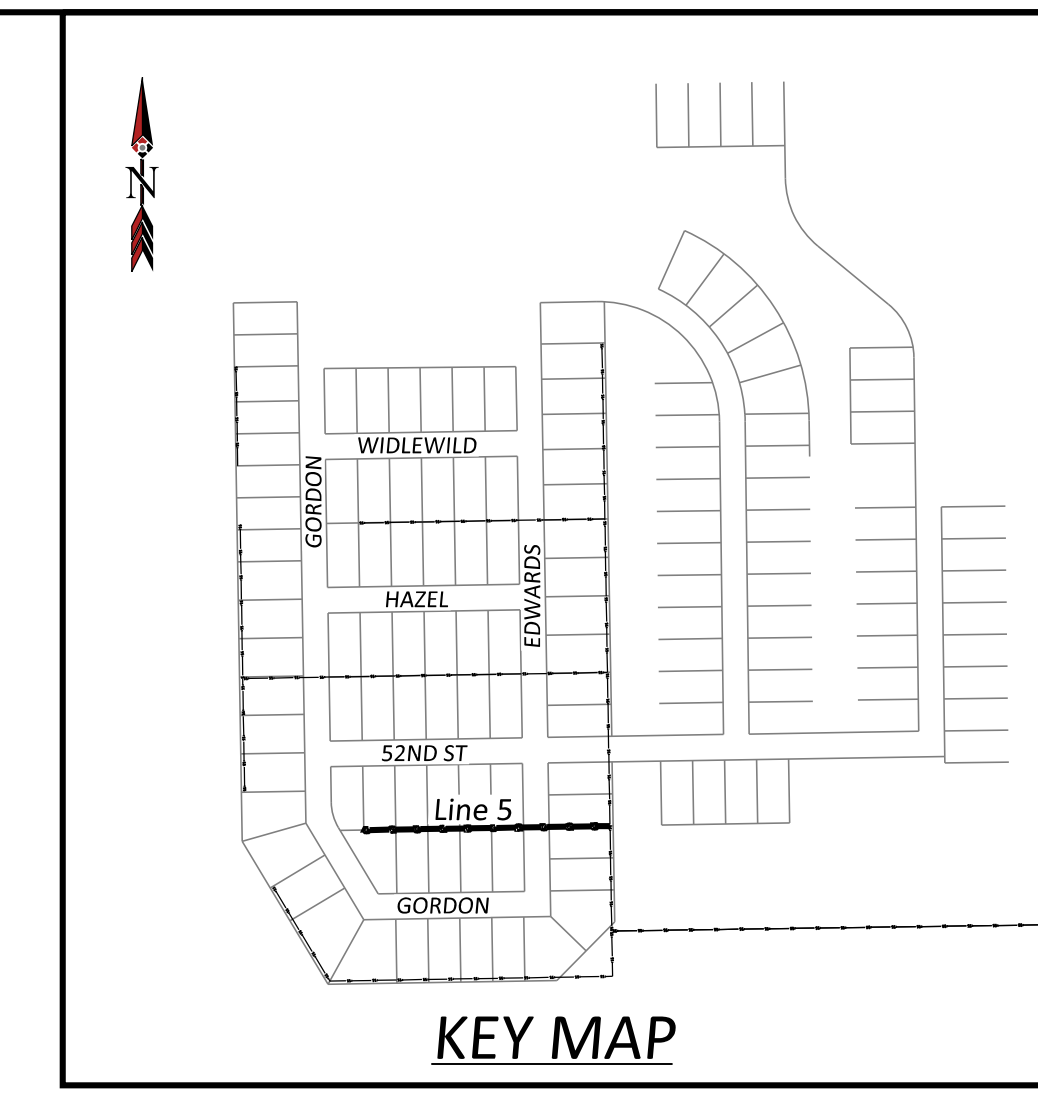
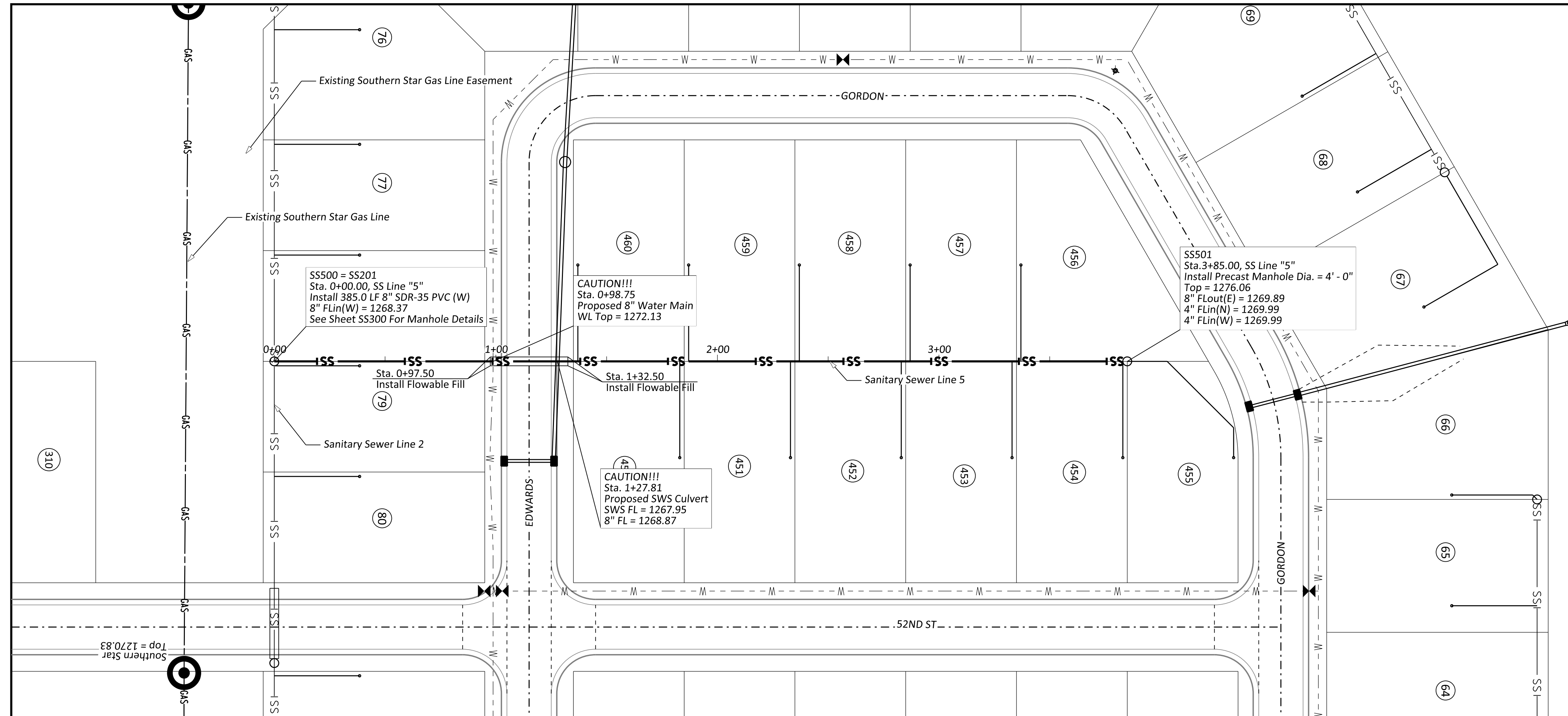


282 E. Woodland Ave., 110, Box 452 | Andover, KS 67202
P: (316) 936-6995 | F: (316) 286-9951 | www.asm-inc.com

Client: **WELCOME HOME**
5111 S. Meridian,
Wichita, KS 67217

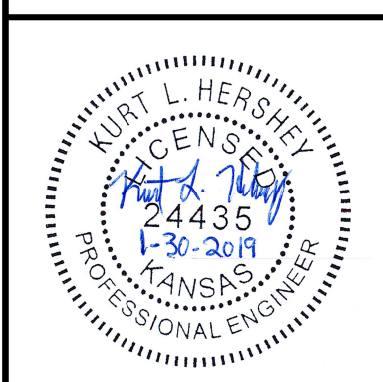
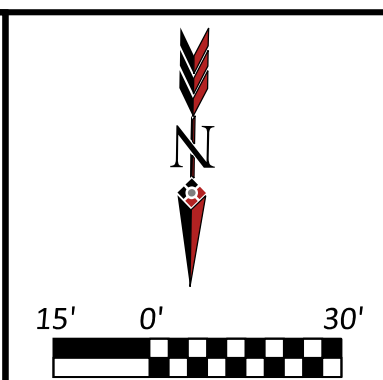
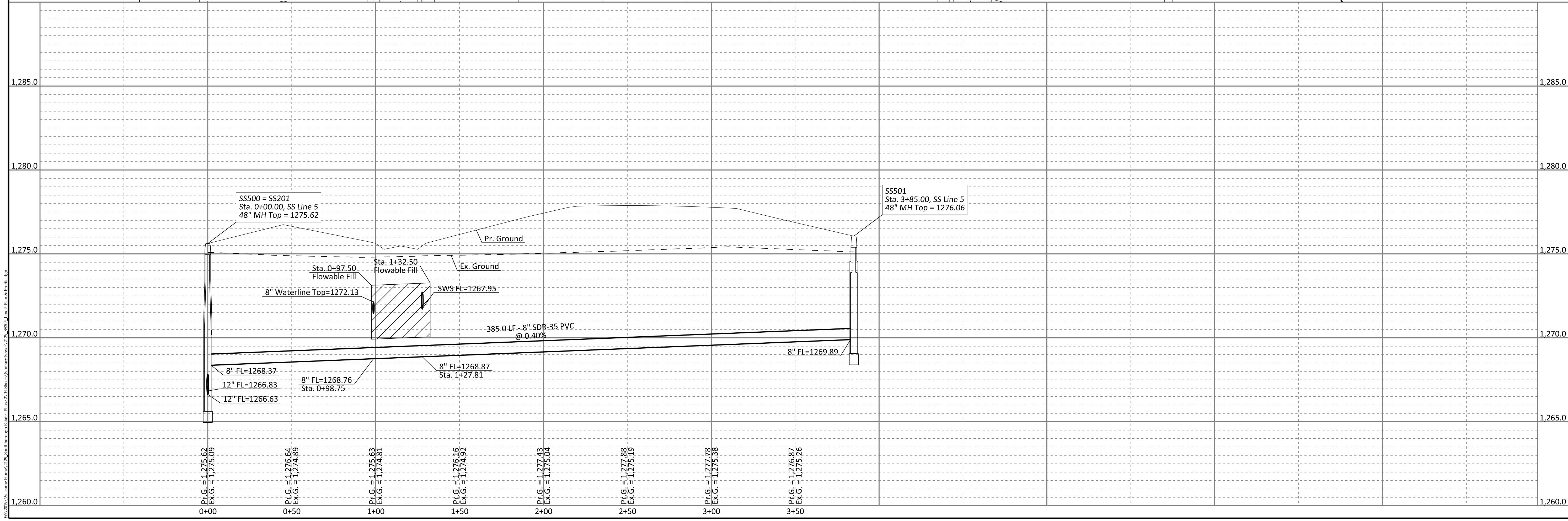
SOUTHBOROUGH ESTATES PHASE 2
SANITARY SEWER LINE "3" PLAN & PROFILE
WICHITA, KANSAS

Sheet No. **SS203**
Project No. **2129**



AS-BUILT
10/15/2019 5:11:22 PM

Note: See Sheet SS101 For All Manhole Staking Data.



Issue	Date	By	Description
0	1-28-2019	KLH	ISSUE FOR CONSTRUCTION
1	1-30-2019	KLH	REVISED PER CITY COMMENTS
-	-	-	-
-	-	-	-

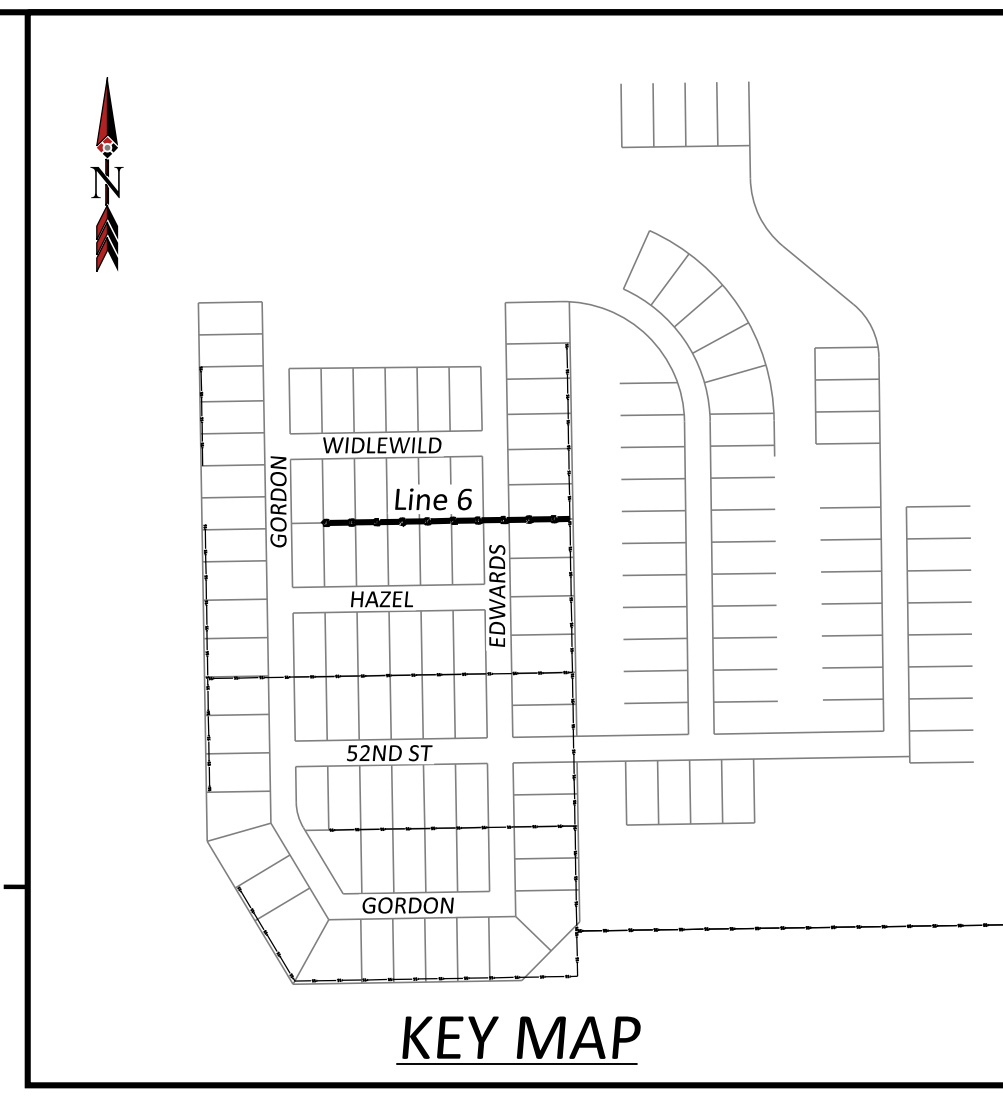
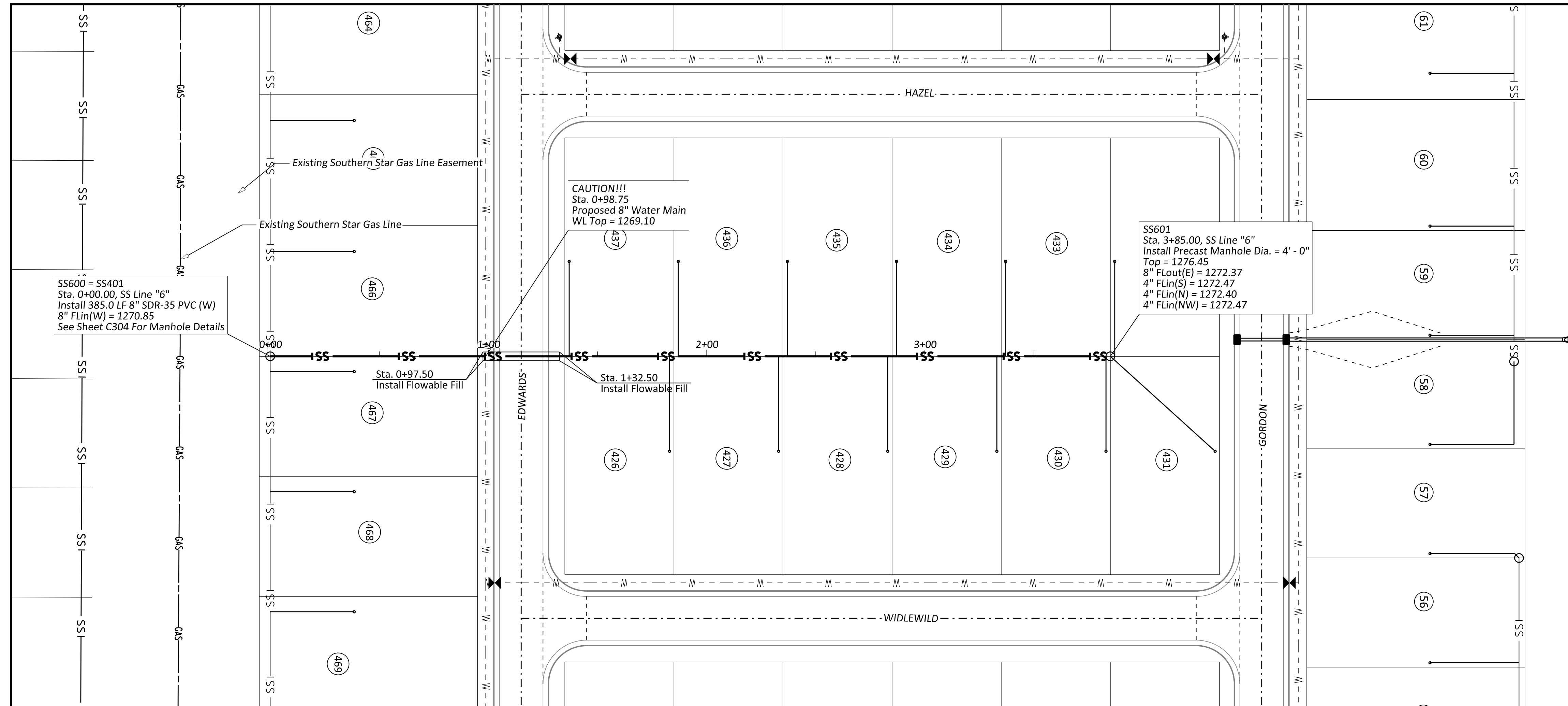
Drawn By: _____ Date: 1/30/2019
Checked By: _____ Issue No. 1



Client: **WELCOME HOME**
5111 S. Meridian,
Wichita, KS 67217

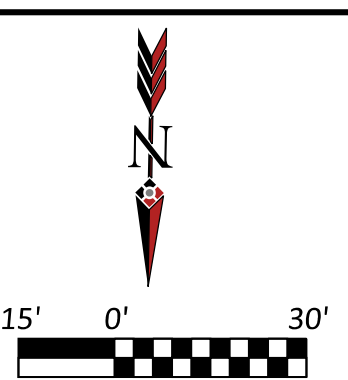
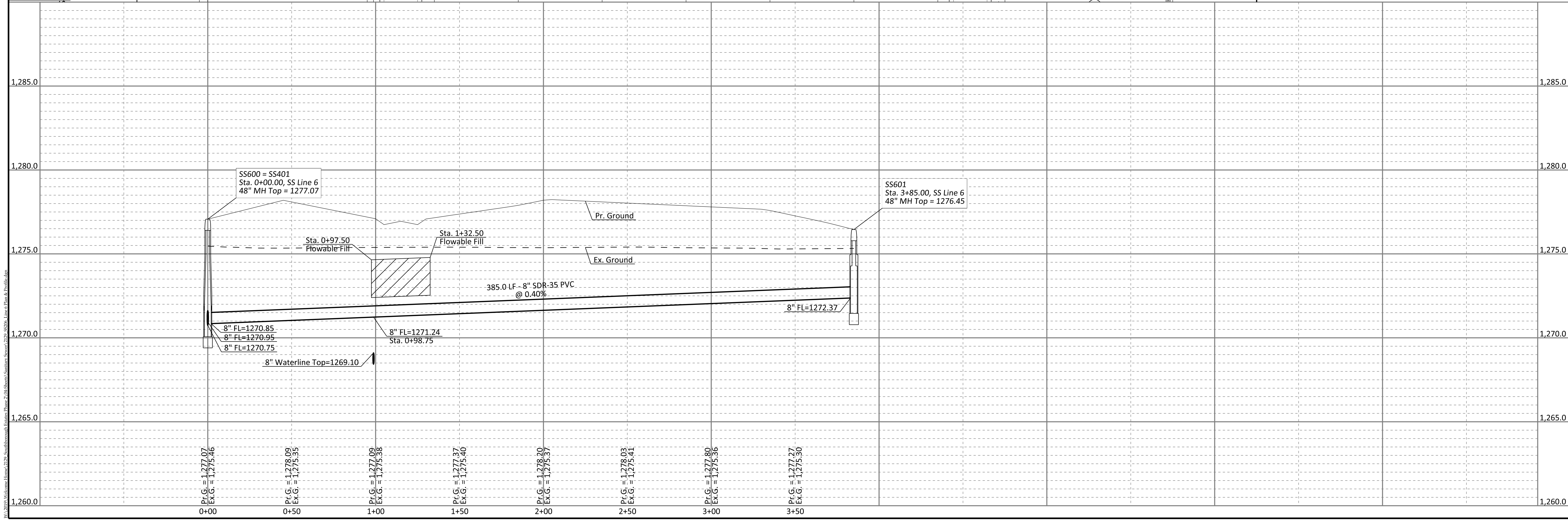
SOUTHBOROUGH ESTATES PHASE 2
SANITARY SEWER LINE "5" PLAN & PROFILE
WICHITA, KANSAS

Sheet No. **SS205**
Project No. **2129**



AS-BUILT
10/15/2019 5:11:23 PM

Note: See Sheet SS101 For All Manhole Staking Data.



Issue	Date	By	Description
1	1-30-2019	KLH	ISSUE FOR CONSTRUCTION
0	1-30-2019	KLH	REVISED PER CITY COMMENTS

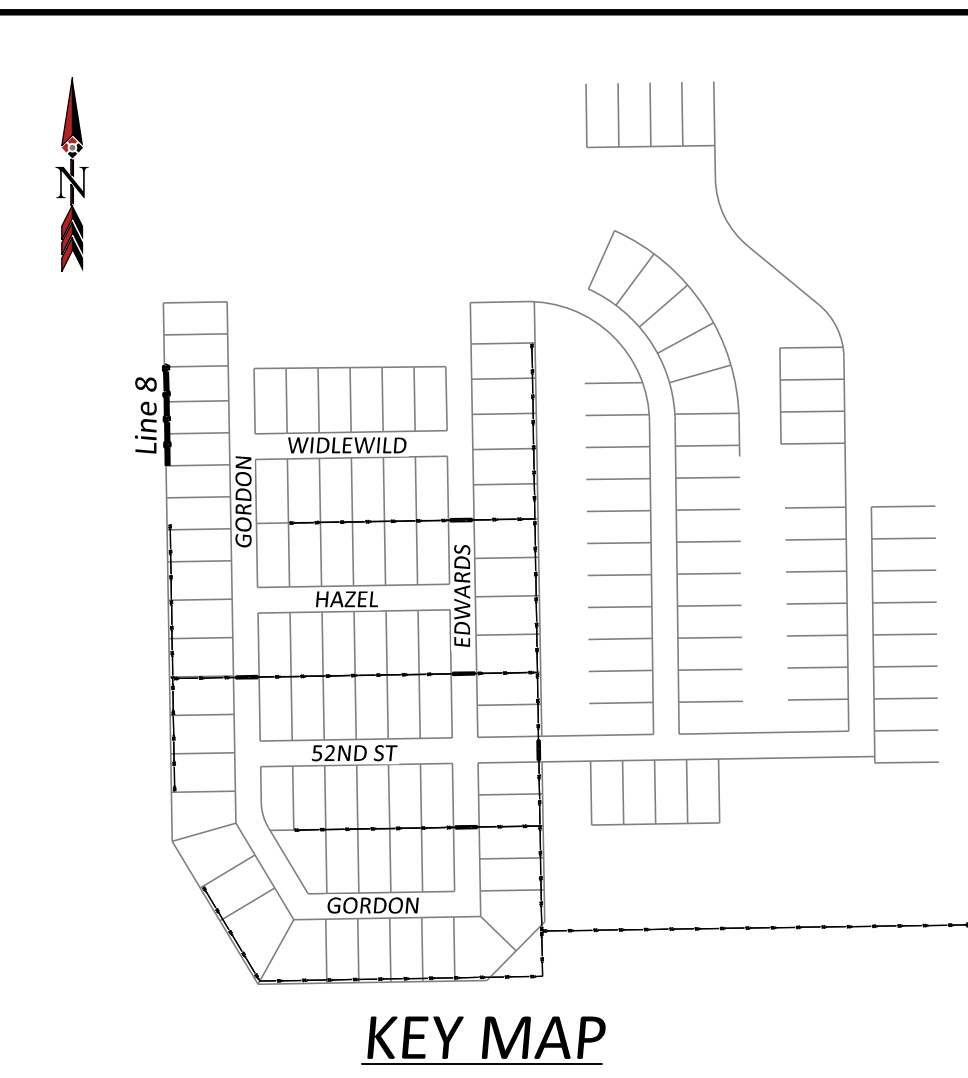
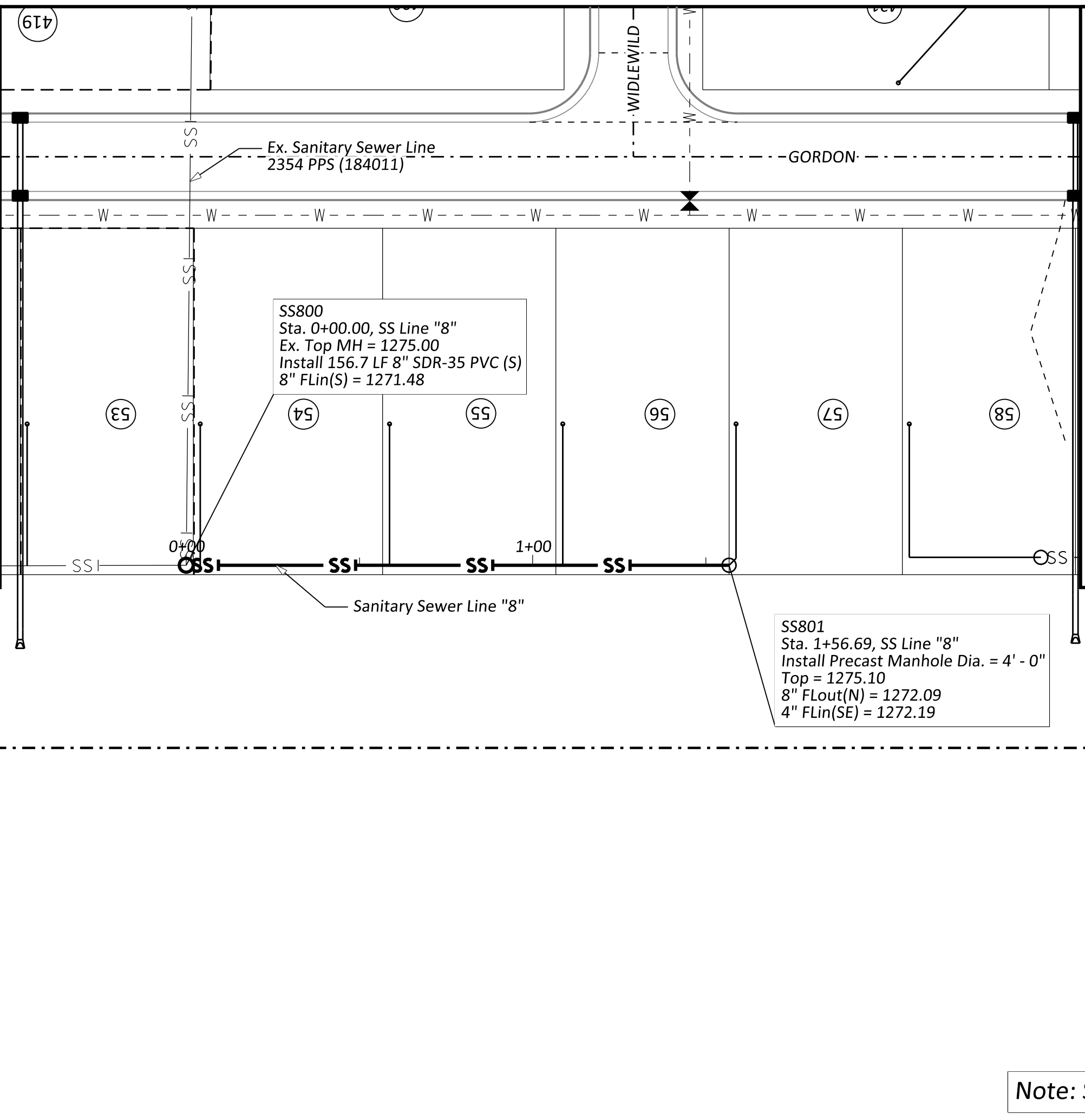
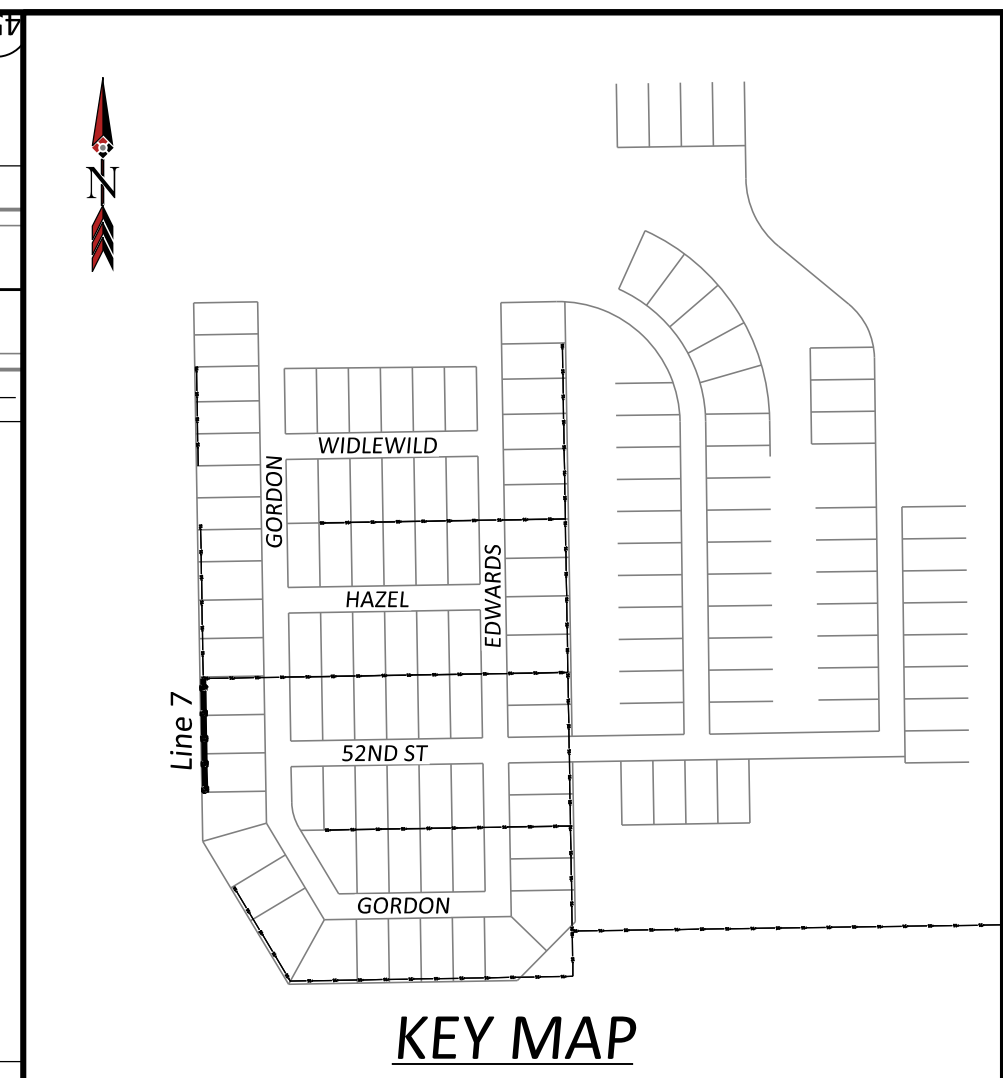
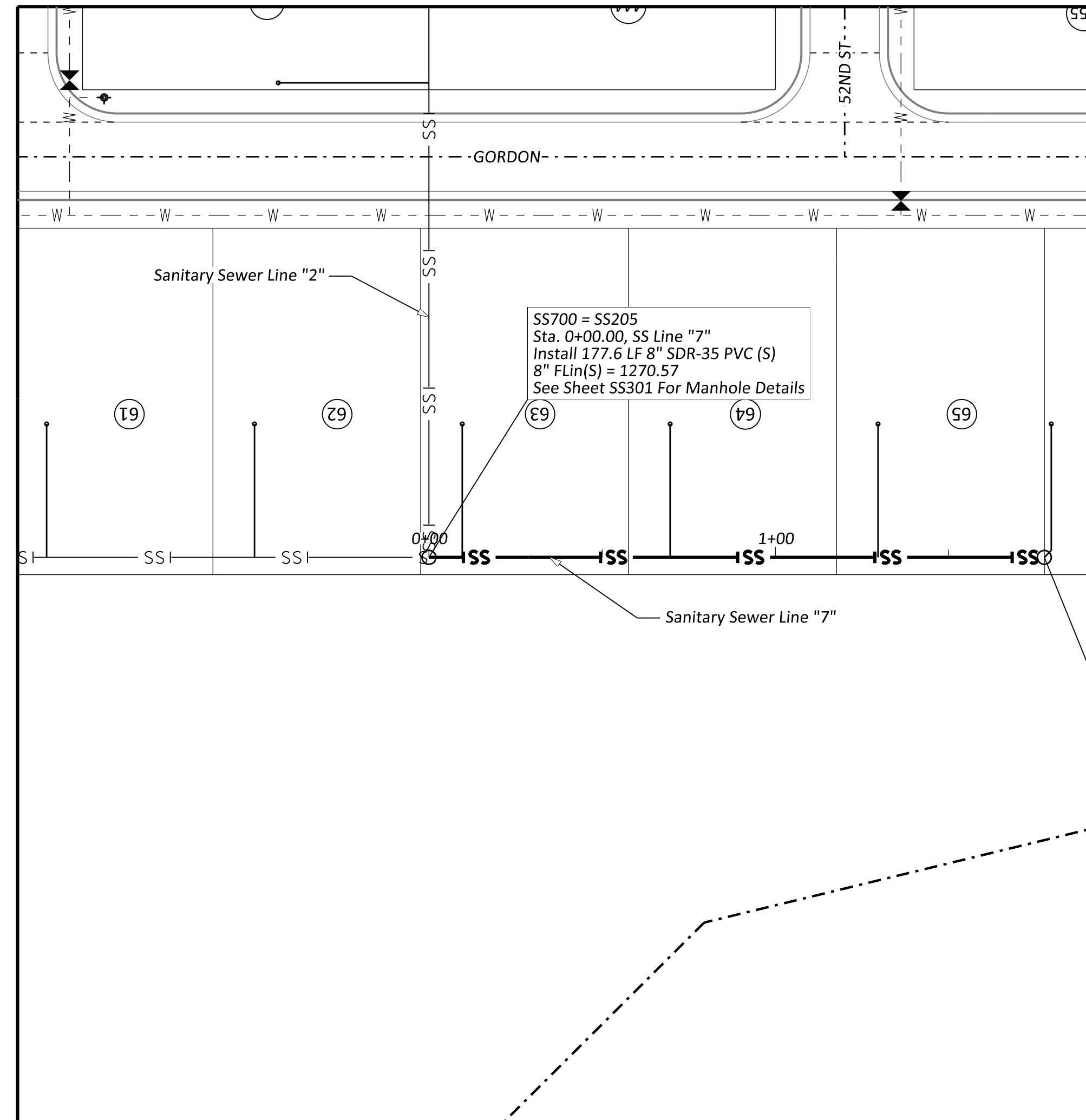
Drawn By: [Blank]
Checked By: [Blank]
Date: 1/30/2019
Issue No. 1



Client: **WELCOME HOME**
5111 S. Meridian,
Wichita, KS 67217

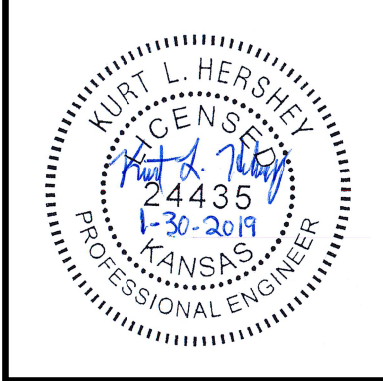
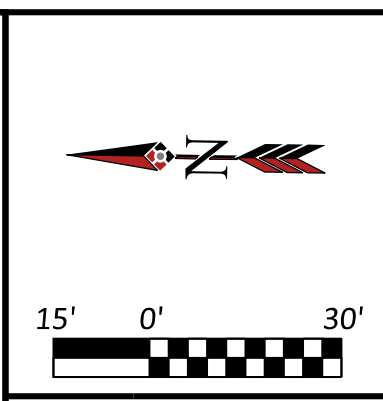
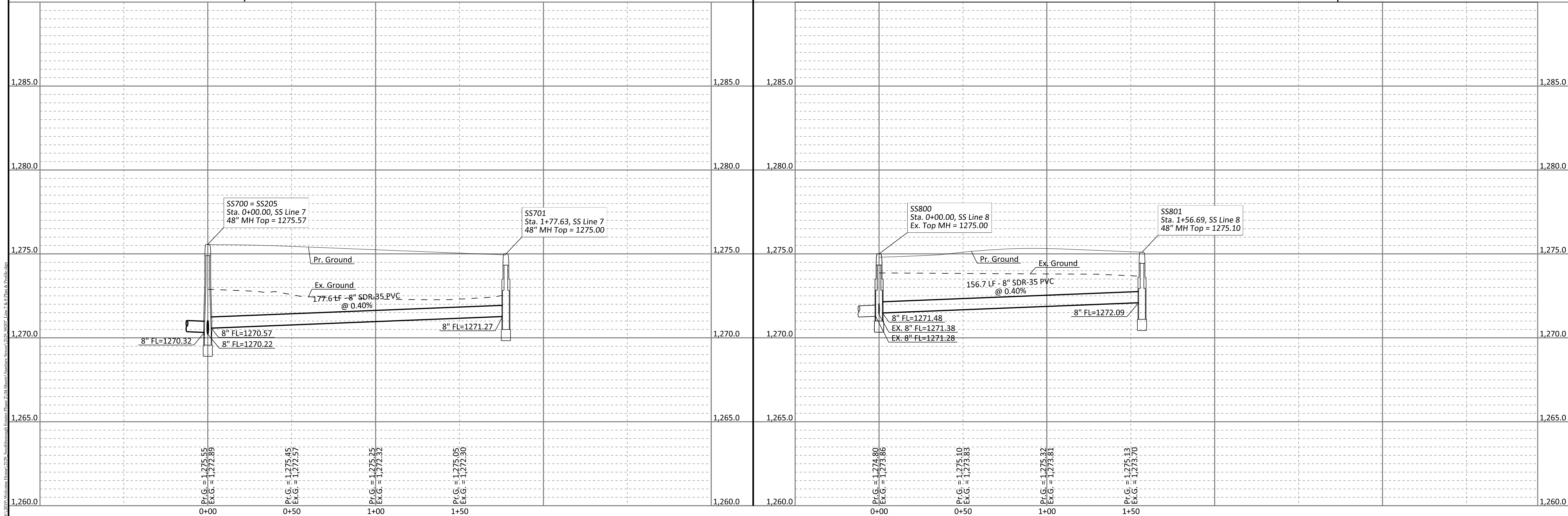
SOUTHBOROUGH ESTATES PHASE 2
**SANITARY SEWER
LINE "6"
PLAN & PROFILE**
WICHITA, KANSAS

Sheet No. **SS206**
Project No. **2129**



AS-BUILT
10/15/2019 5:11:23 PM

Note: See Sheet SS101 For All Manhole Staking Data.



Issue	Date	By	Description
0	1-28-2019	KLH	ISSUE FOR CONSTRUCTION
1	1-30-2019	KLH	REVISED PER CITY COMMENTS
-	-	-	-
-	-	-	-

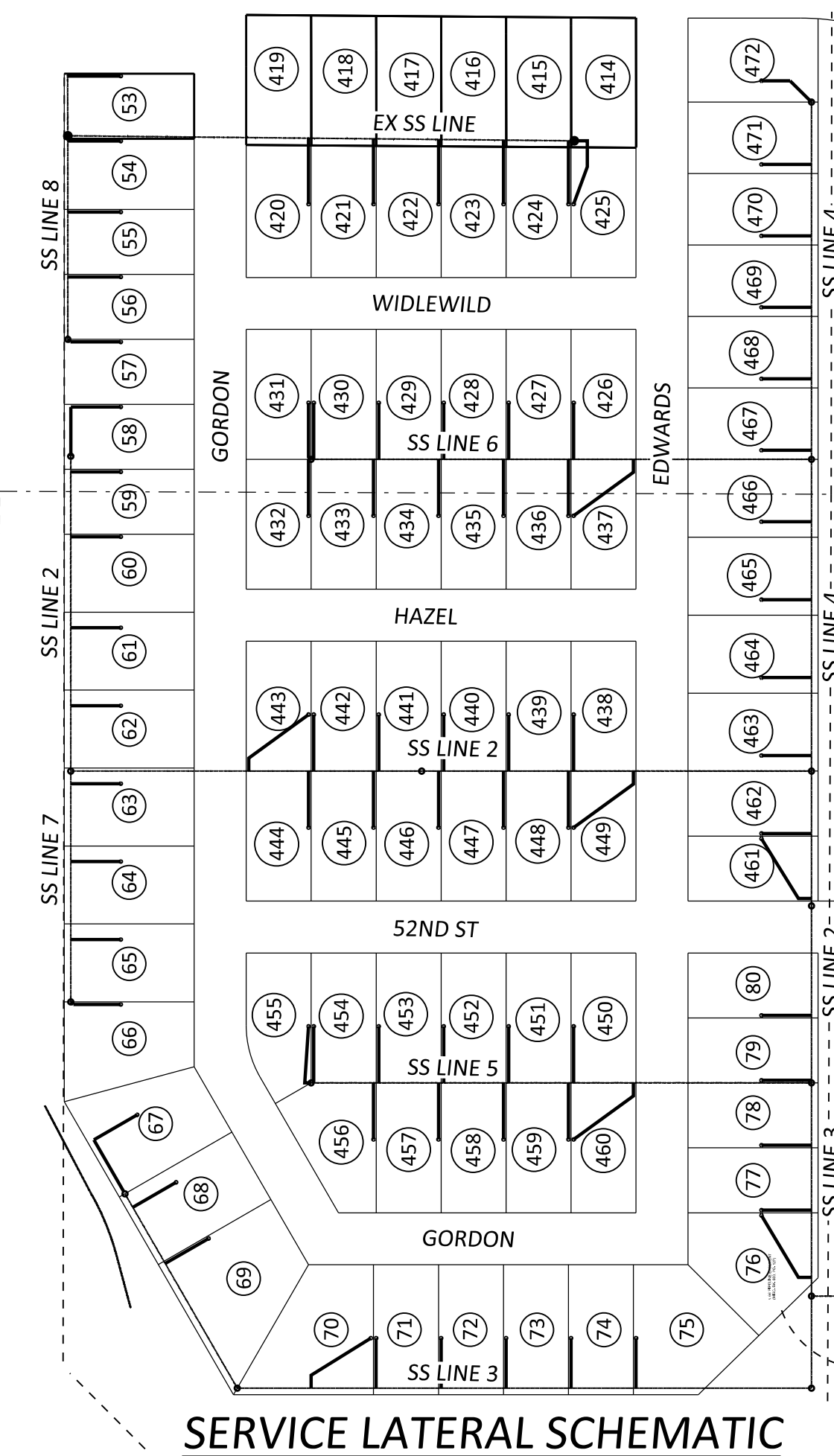
Drawn By: _____ Date: 1/30/2019
Checked By: _____ Issue No. 1



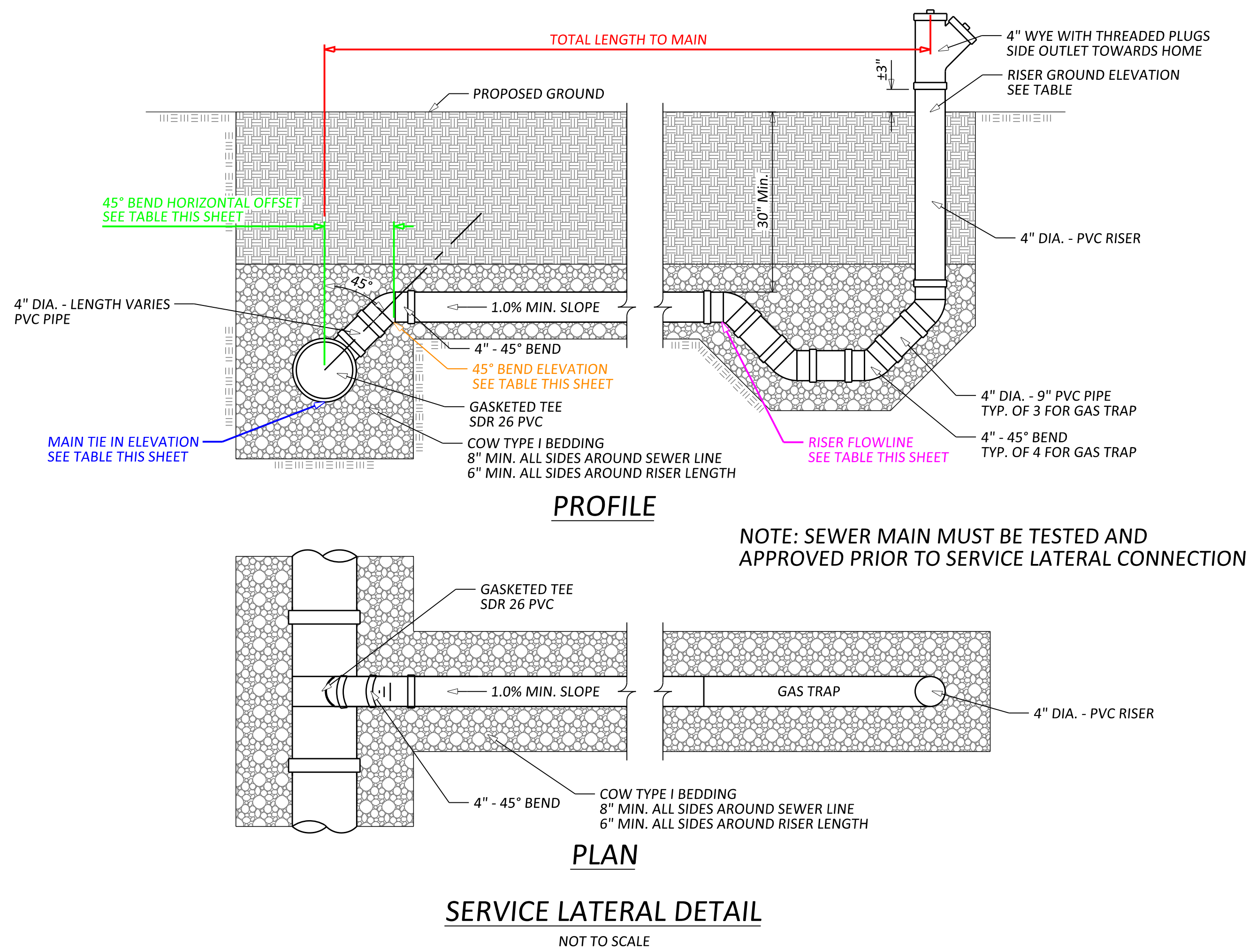
Client: **WELCOME HOME**
5111 S. Meridian,
Wichita, KS 67217

SOUTHBOROUGH ESTATES PHASE 2
**SANITARY SEWER
LINE "7" & LINE "8"
PLAN & PROFILE**
WICHITA, KANSAS

Sheet No. **SS207**
Project No. **2129**



SERVICE LATERAL SCHEMATIC



SERVICE LATERAL DETAIL

NOT TO SCALE

Lot	Sewer Main Connection				INDIVIDUAL LOT SEWER LATERALS						
	Sewer Main	Northing	Easting	Main Tie In Elevation	Total Length To Main (FT)	45 Degree Bend Data		Lot Riser Data			
						45 Degree Bend Horizontal Offset (FT)	45 Degree Bend Elevation	Northing	Easting	Ground Elevation	Riser FL
53	EX SS LINE	1654672.68	1638261.89	1271.10	40.90	0.81	1272.41	1654673.36	1638302.81	1275.64	1272.81
54	LINE 8	1654622.69	1638262.88	1271.49	40.80	NO 45°	1272.41	1654623.37	1638303.65	1275.60	1272.76
55	LINE 8	1654568.07	1638263.79	1271.71	40.80	NO 45°	1272.41	1654568.75	1638304.56	1275.75	1272.92
56	LINE 8	1654518.07	1638264.63	1271.91	40.80	NO 45°	1272.41	1654518.76	1638305.40	1275.91	1273.07
57	LINE 8	1654470.08	1638265.43	1272.19	41.60	MANHOLE TIE IN	1272.41	1654468.76	1638306.24	1275.71	1272.87
58	LINE 2	1654380.13	1638269.21	1271.38	76.50	MANHOLE TIE IN	1272.41	1654418.77	1638307.07	1275.51	1272.67
59	LINE 2	1654368.13	1638269.42	1271.24	38.50	NO 45°	1272.41	1654368.78	1638307.91	1275.37	1272.54
60	LINE 2	1654318.14	1638270.25	1271.04	38.50	0.77	1272.31	1654318.78	1638308.75	1275.52	1272.69
61	LINE 2	1654248.15	1638271.42	1270.76	38.50	1.33	1272.59	1654248.79	1638309.92	1275.80	1272.97
62	LINE 2	1654188.16	1638272.43	1270.52	38.50	1.82	1272.84	1654188.80	1638310.92	1276.04	1273.21
63	LINE 7	1654128.17	1638273.43	1270.61	38.50	1.82	1272.93	1654128.81	1638311.93	1276.13	1273.29
64	LINE 7	1654068.17	1638274.44	1270.85	38.50	1.39	1272.74	1654068.82	1638312.93	1275.95	1273.11
65	LINE 7	1654008.18	1638275.44	1271.09	38.50	0.91	1272.50	1654008.83	1638313.94	1275.71	1272.87
66	LINE 7	1653960.19	1638276.25	1271.37	39.30	MANHOLE TIE IN	1272.41	1653958.84	1638314.78	1275.51	1272.67
67	LINE 3	1653813.18	1638320.45	1270.90	86.50	MANHOLE TIE IN	1272.41	1653874.14	1638328.77	1275.41	1272.57
68	LINE 3	1653802.89	1638326.62	1270.76	38.50	NO 45°	1272.41	1653822.69	1638359.64	1275.60	1272.77
69	LINE 3	1653760.06	1638352.32	1270.56	38.50	1.59	1272.85	1653779.87	1638385.33	1275.85	1273.02
70	LINE 3	1653665.96	1638466.18	1269.70	64.11	2.40	1272.60	1653705.23	1638511.53	1276.05	1273.22
71	LINE 3	1653666.80	1638516.17	1269.50	38.50	2.88	1272.88	1653705.30	1638515.53	1276.07	1273.24
72	LINE 3	1653667.64	1638566.17	1269.30	38.50	3.33	1273.13	1653706.13	1638565.52	1276.32	1273.49
73	LINE 3	1653668.48	1638616.16	1269.10	38.50	3.72	1273.32	1653706.97	1638615.52	1276.50	1273.67
74	LINE 3	1653669.31	1638666.15	1268.90	38.50	3.88	1273.28	1653707.81	1638665.51	1276.46	1273.63
75	LINE 3	1653670.15	1638716.15	1269.20	38.50	3.42	1273.12	1653708.65	1638715.50	1276.31	1273.47
76	LINE 2	1653757.63	1638849.72	1266.31	65.63	6.74	1273.55	1653804.75	1638810.43	1276.97	1274.14
77	LINE 2	1653809.39	1638848.85	1266.42	38.50	6.88	1273.80	1653808.75	1638810.36	1276.95	1274.12
78	LINE 2	1653859.39	1638848.02	1266.53	38.50	6.59	1273.62	1653858.74	1638809.52	1276.77	1273.94
79	LINE 2	1653909.38	1638847.18	1266.83	38.50	6.09	1273.42	1653908.73	1638808.68	1276.57	1273.74
80	LINE 2	1653959.37	1638846.34	1266.94	38.50	5.87	1273.31	1653958.73	1638807.85	1276.47	1273.64
80	EX SS LINE	1654628.01	1638448.09	1272.12	50.70	NO 45°	NO 45°	1654577.30	1638448.94	1275.78	1272.95
421	EX SS LINE	1654628.36	1638498.09	1272.32	50.20	NO 45°	NO 45°	1654578.14	1638498.93	1275.96	1273.13
422	EX SS LINE	1654628.70	1638548.09	1272.52	49.70	NO 45°	NO 45°	1654578.98	1638548.92	1276.14	1273.31
423	EX SS LINE	1654629.04	1638598.09	1272.72	49.20	NO 45°	NO 45°	1654579.81	1638598.92	1276.32	1273.48
424	EX SS LINE	1654629.38	1638648.09	1273.02	48.70	MANHOLE TIE IN	1272.41	1654580.65	1638648.91	1276.49	1273.66
425	EX SS LINE	1654629.41	1638652.56	1273.02	60.54	MANHOLE TIE IN	1272.41	1654580.72	1638652.91	1276.51	1273.68
426	LINE 6	1654384.25	1638656.20	1271.57	43.50	2.23	1274.30	1654427.74	1638655.47	1277.55	1274.72
427	LINE 6	1654383.41	1638606.21	1271.77	43.50	1.83	1274.10	1654426.90	1638605.48	1277.35	1274.51
428	LINE 6	1654382.57	1638556.21	1271.97	43.50	1.41	1273.88	1654426.07	1638555.49	1277.13	1274.30
429	LINE 6	1654381.73	1638506.22	1272.17	43.50	0.99	1273.66	1654425.23	1638505.49	1276.92	1274.09
430	LINE 6	1654380.86	1638454.23	1272.47	43.50	MANHOLE TIE IN	1272.41	1654424.39	1638455.50	1276.56	1273.73
431	LINE 6	1654380.86	1638454.23	1272.40	44.39	MANHOLE TIE IN	1272.41	1654424.32	1638451.50	1276.64	1273.81
432	LINE 6	1654380.86	1638454.23	1272.47	43.50	MANHOLE TIE IN	1272.41	1654427.74	1638452.96	1276.45	1273.62
433	LINE 6	1654381.72	1638502.22	1272.19	43.50	0.95	1273.64	1654383.23	1638502.95	1276.90	1274.07
434	LINE 6	1654382.56	1638552.21	1271.99	43.50	1.39	1273.88	1654389.06	1638552.94	1277.13	1274.30
435	LINE 6	1654383.40	1638602.21	1271.79	43.50	1.82	1274.11	1654389.90	1638602.93	1277.36	1274.53
436	LINE 6	1654384.23	1638652.20	1271.59	43.50	2.26	1274.35	1654340.74	1638652.93	1277.59	1274.76
437	LINE 6	1654385.07	1638702.19	1271.39	66.91	2.22	1274.11	1654340.81	1638656.93	1277.59	1274.76
438	LINE 2	1654144.28	1638660.22	1268.60	43.50	4.99	1274.09	1654187.77	1638659.49	1277.31	1274.47
439	LINE 2	1654143.44	1638610.23	1268.80	43.50	4.71	1274.01	1654186.94	1638609.50	1277.24	1274.40
440	LINE 2	1654142.61	1638560.23	1269.00	43.50	4.40	1273.90	1654186.10	1638559.50	1277.12	1274.29
441	LINE 2	1654141.77	1638510.24	1269.28	43.50	3.90	1273.68	1654185.26	1638509.51	1276.91	1274.08
442	LINE 2	1654140.93	1638460.25	1269.48	43.50	3.47	1273.46	1654184.42	1638459.52	1276.68	1273.85
443	LINE 2	1654140.09	1638410.25	1269.68	66.91	2.99	1273.17	1654184.36	1638455.52	1276.64	1273.81
444	LINE 2	1654140.92	1638456.25	1269.50	43.50	3.42	1273.42	1654097.42	1638456.97	1276.65	1273.82
445	LINE 2	1654141.75	1638506.24	1269.30	43.50	3.85	1273.65	1654098.26	1638506.97	1276.88	1274.05
446	LINE 2	1654142.59	1638556.23	1269.02	43.50	4.35	1273.87	1654099.10	1638556.96	1277.10	1274.26
447	LINE 2	1654143.43	1638606.23	1268.82	43.50	4.60	1273.92	1654099.94	1638606.95	1277.14	1274.31
448	LINE 2	1654144.27	1638656.22	1268.62	43.50	4.65	1273.77	1654100.77	1638656.95	1276.99	1274.16
449	LINE 2	1654145.10	1638706.21	1268.42	66.91	4.58	1273.50	1654100.84	1638660.95	1276.96	1274.13
450	LINE 5	1653904.31	1638664.24	1269.09	43.50	4.08	1273.67	1653947.81	1638663.51	1276.90	1274.07
451	LINE 5	1653903.48	1638614.24	1269.29	43.50	4.10	1273.89	1653946.97	1638613.52	1277.12	1274.29
452	LINE 5	1653902.64	1638564.25	1269.49	43.50	3.89	1273.88	1653946.13	1638563.52	1277.11	1274.28
453	LINE 5	1653901.80	1638514.26	1269.69	43.50	3.48	1273.67	1653945.30	1638513.53	1276.90	1274.07
454	LINE 5	1653900.93	1638462.27	1269.99	43.50	MANHOLE TIE IN	1272.41	1653944.46	1638463.54	1276.37	1273.53
455	LINE 5	1653900.93	1638462.27	1269.99	48.60	MANHOLE TIE IN	1272.41	1653944.39	1638459.54	1276.25	1273.42
456	LINE 5	1653901.74	1638510.26	1269.71	43.50	3.40	1273.61	1653858.24	1638510.99	1276.85	1274.01
457	LINE 5	1653902.57	1638560.25	1269.51	43.50	3.89	1273.90	1653859.08	1638560.98	1277.13	1274.29
458	LINE 5	1653903.41	1638610.25	1269.31	43.50	4.19	1274.00	1653859.92	1638610.97	1277.23	1274.40
459	LINE 5	1653904.25	1638660.24	1269.11	43.50	4.29	1273.90	1653860.75	1638660.97	1277.12	1274.29
460	LINE 5	1653905.08	1638710.23	1268.91	66.91	4.17	1273.58	1653860.82	1638664.97	1277.04	1274.21
461	LINE 2	1654049.36	1638844.83	1267.33	64.11	5.78	1273.63	1654094.71	1638805.57	1277.03	1274.20
462	LINE 2	1654099.35	1638844.00	1267.44	38.50	5.88	1273.82	1654098.71	1638805.50	1276.98	1274.15
463	LINE 4	1654159.34	1638842.99	1269.84	38.50	3.70	1274.04	1654158.70	1638804.50	1277.22	1274.39
464	LINE 4	1654219.33	1638841.99	1270.08	38.50	3.70	1274.28	1654218.69	1638803.49	1277.46	1274.63
465	LINE 4	1654279.33	1638840.98	1270.32	38.50	3.70	1274.52	1654278.68	1638802.49	1277.70	1274.87
466	LINE 4	1654339.32	1638839.98	1270.56	38.50	3.70	1274.76	1654338.67	1638801.48	1277.94	1275.11
467	LINE 4	1654394.31	1638839.06	1270.97	38.50	3.37	1274.84	1654393.67	1638800.56	1278.03	1275.19
468	LINE 4	1654449.30	1638838.14	1271.19	38.50	2.95	1274.64	1654448.66	1638799.64	1277.83	1274.99
469	LINE 4	1654504.29	1638837.21	1271.41	38.50	2.42	1274.33	1654503.65	1638798.72	1277.53	1274.69
470	LINE 4	1654559.29	1638836.29	1271.63	38.50	1.90	1274.03	1654558.64	1638797.80	1277.23	1274.39</