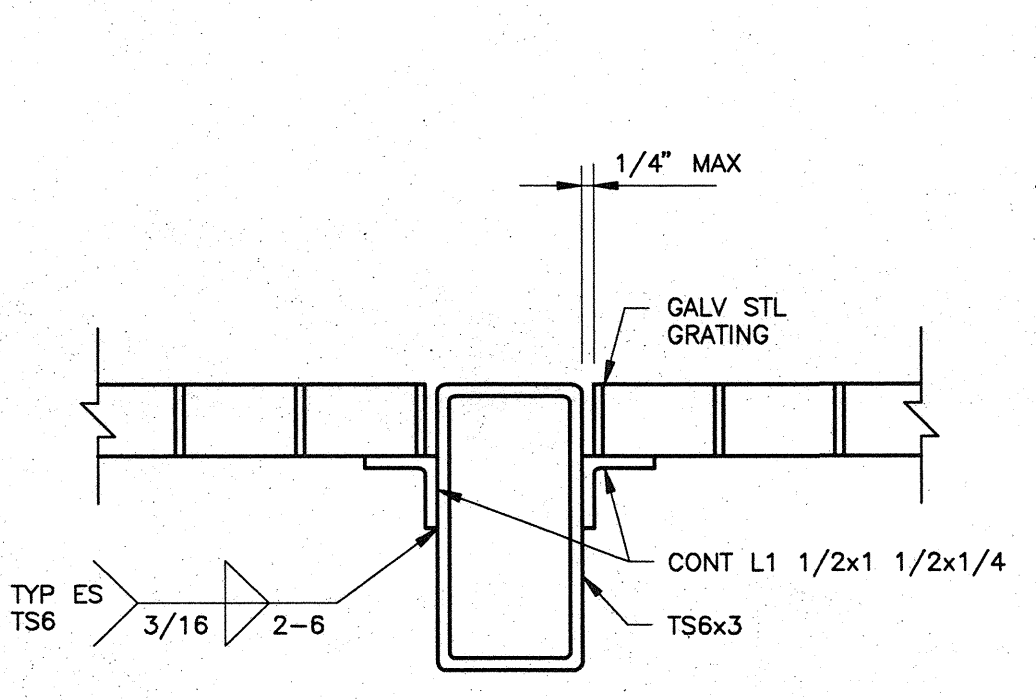
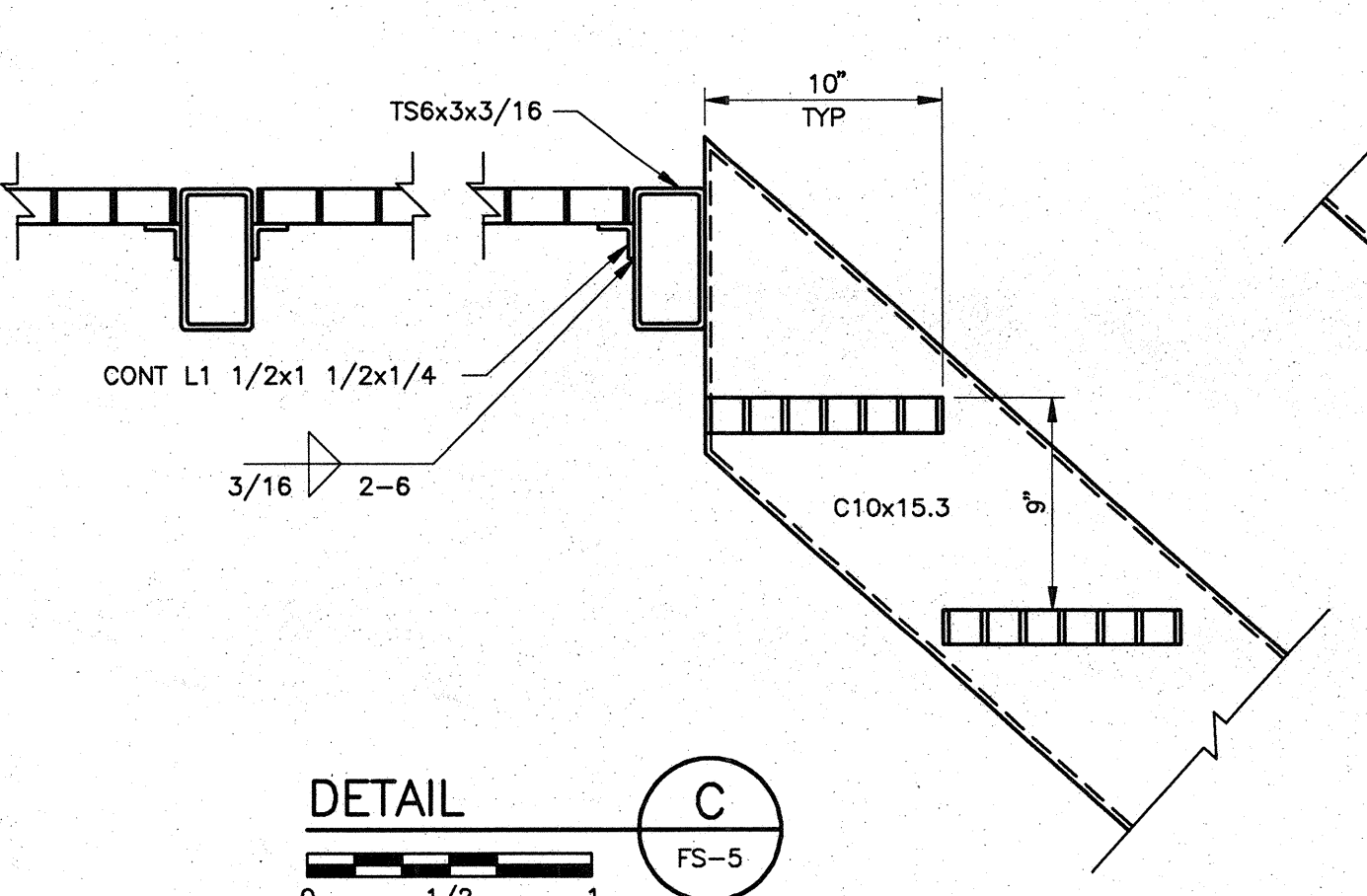


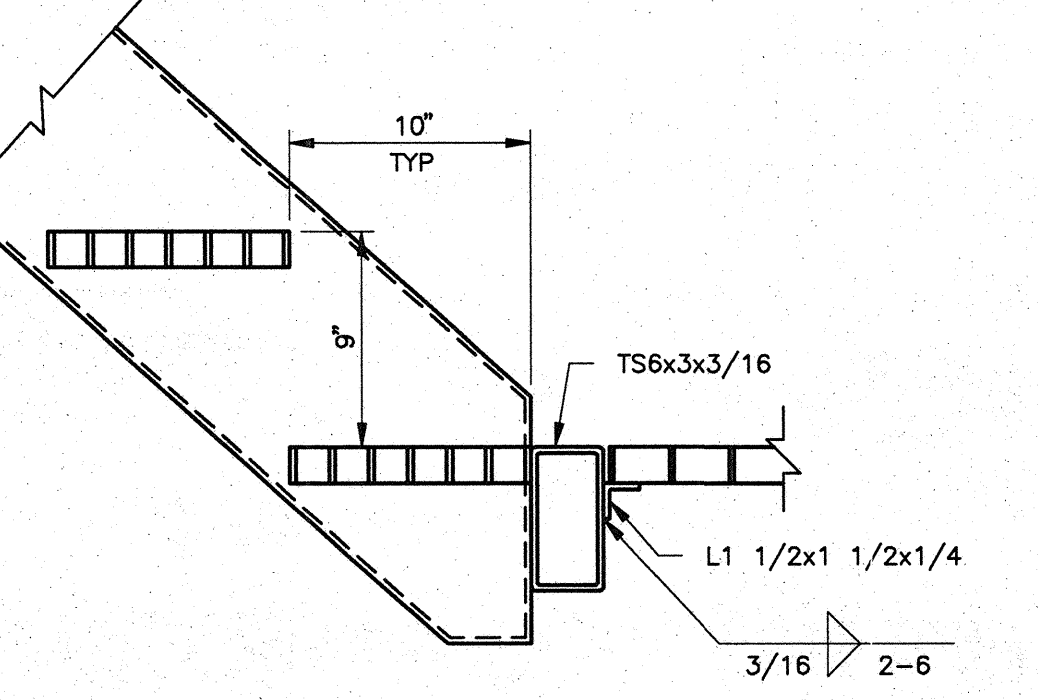
DETAIL A
FS-5
3" = 1'-0"



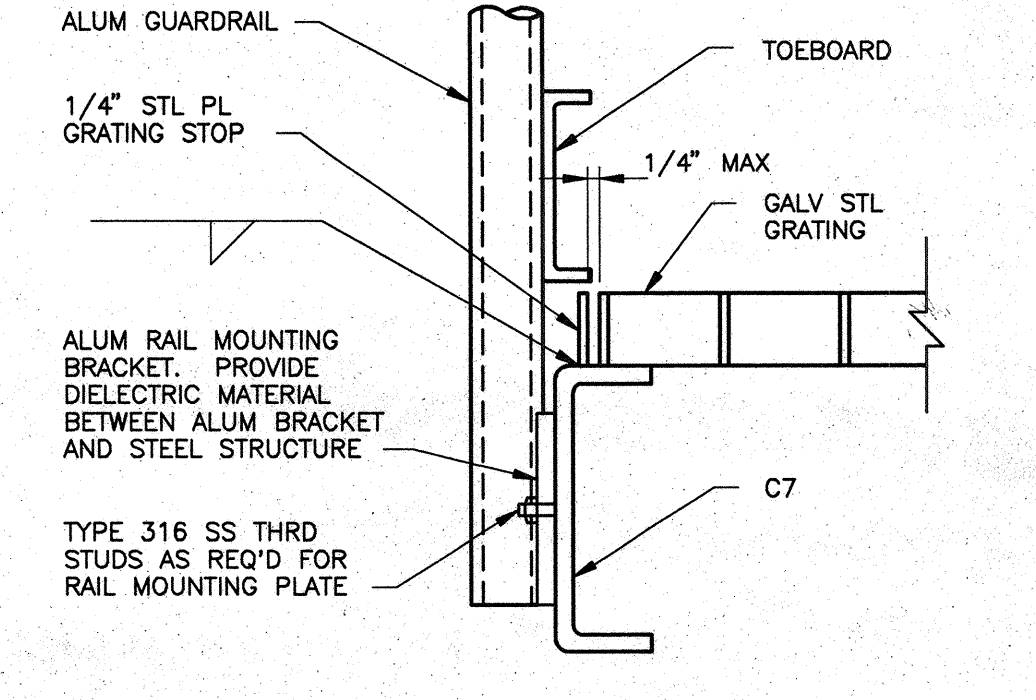
DETAIL B
FS-5
3" = 1'-0"



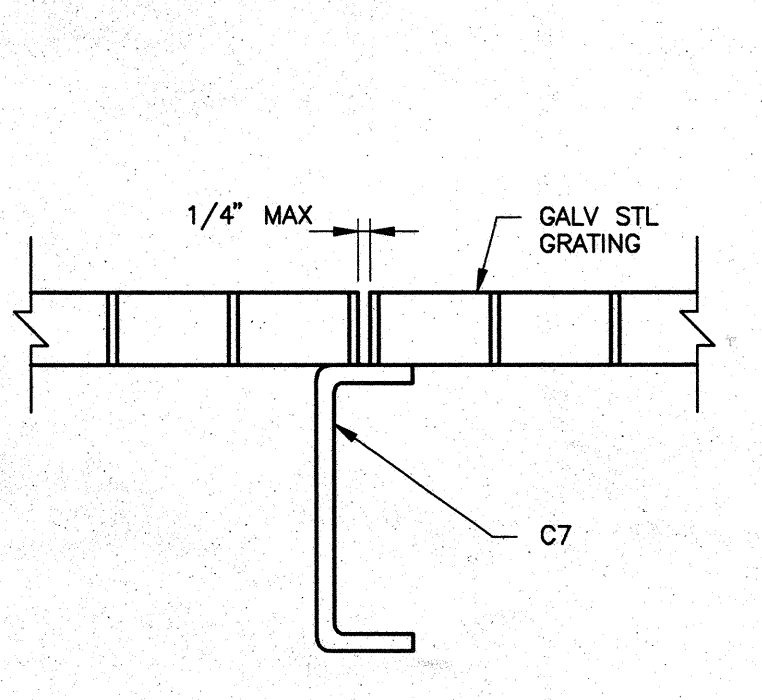
DETAIL C
FS-5
1 1/2" = 1'-0"



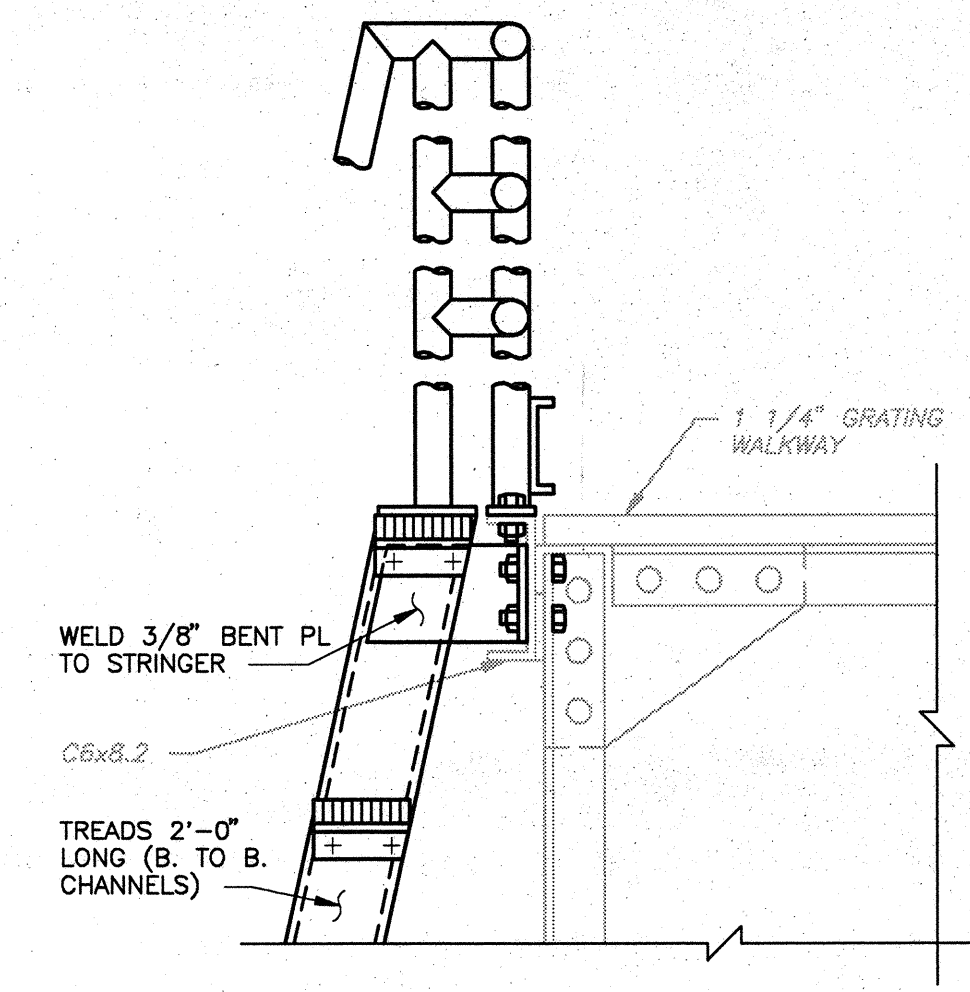
DETAIL D
FS-5
1 1/2" = 1'-0"



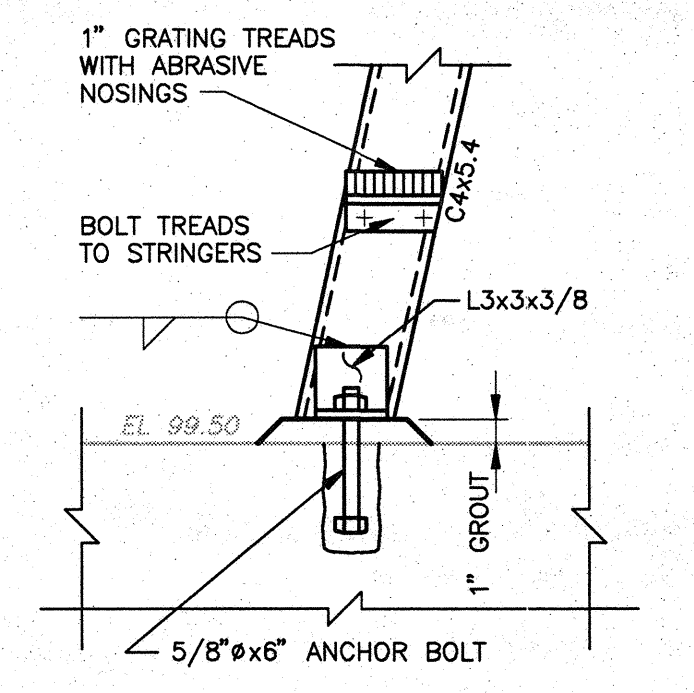
DETAIL E
FS-5
3" = 1'-0"



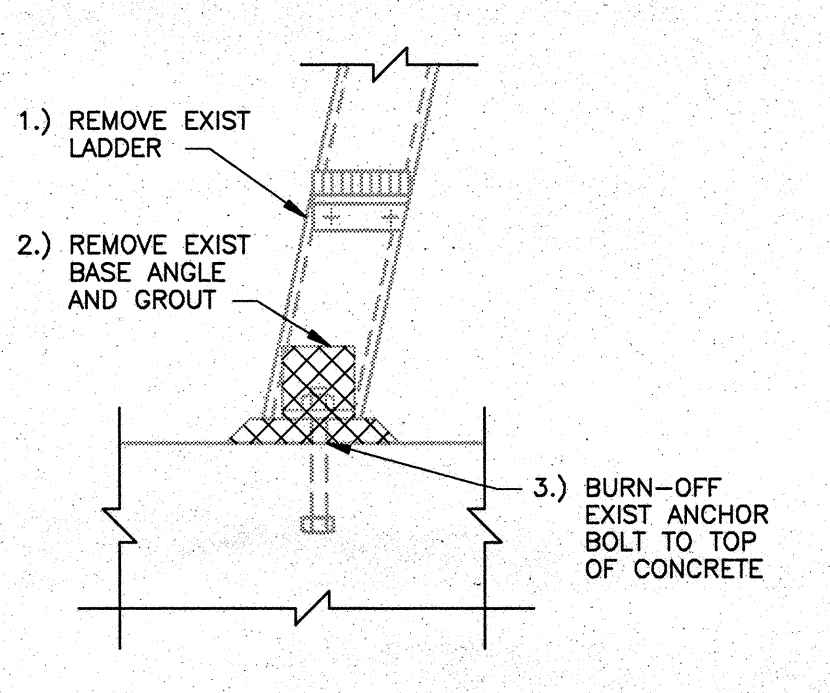
DETAIL F
FS-5
3" = 1'-0"



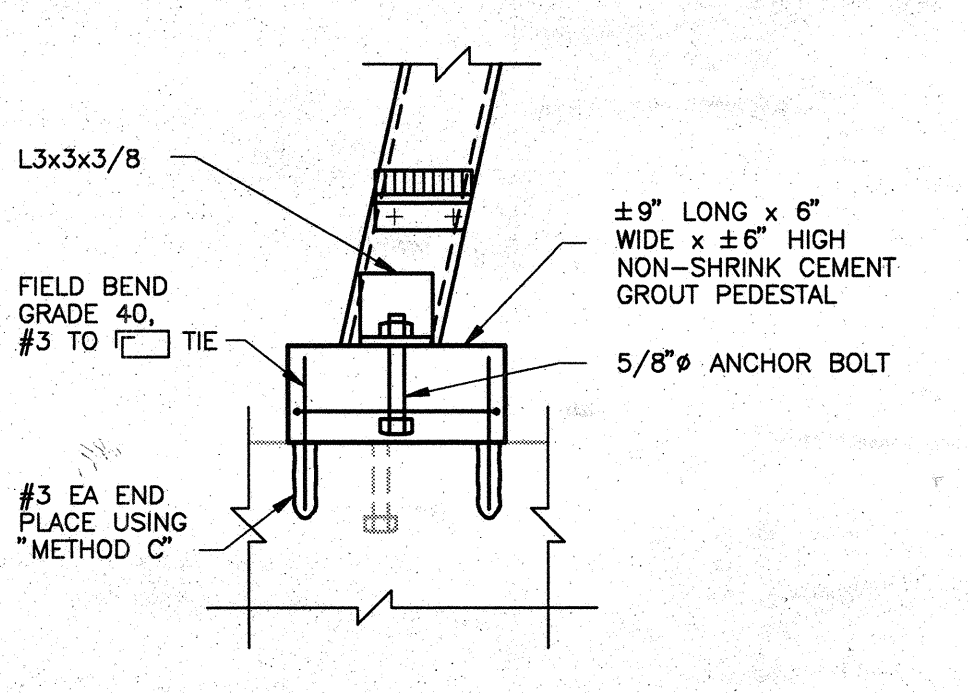
CONNECTION AT WALKWAY
DETAIL G
FS-6,7
1 1/2" = 1'-0"



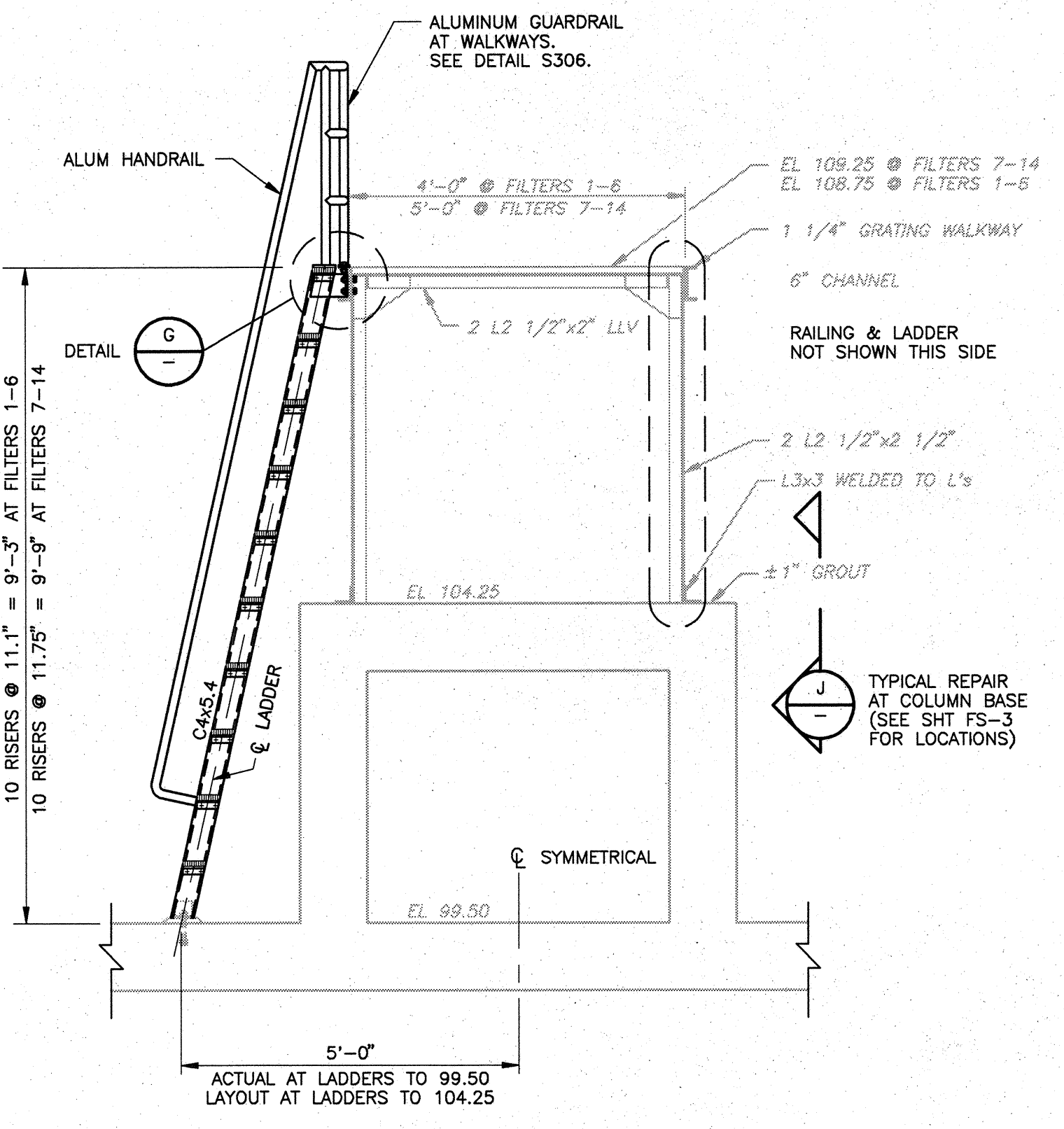
NEW CONNECTION AT EL 99.50
DETAIL H
1 1/2" = 1'-0"



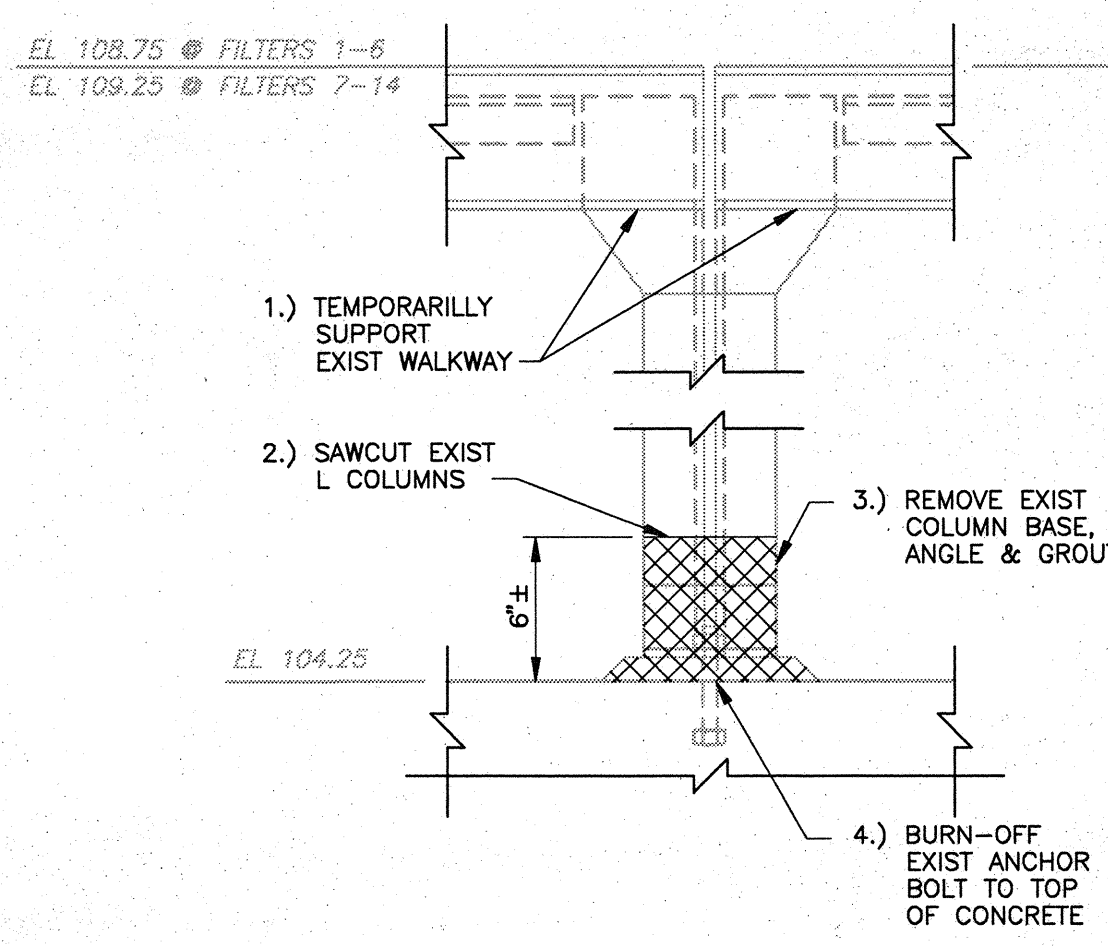
TYPICAL DEMOLITION AT EXISTING SHIPS LADDER BASE
DETAIL I
1 1/2" = 1'-0"



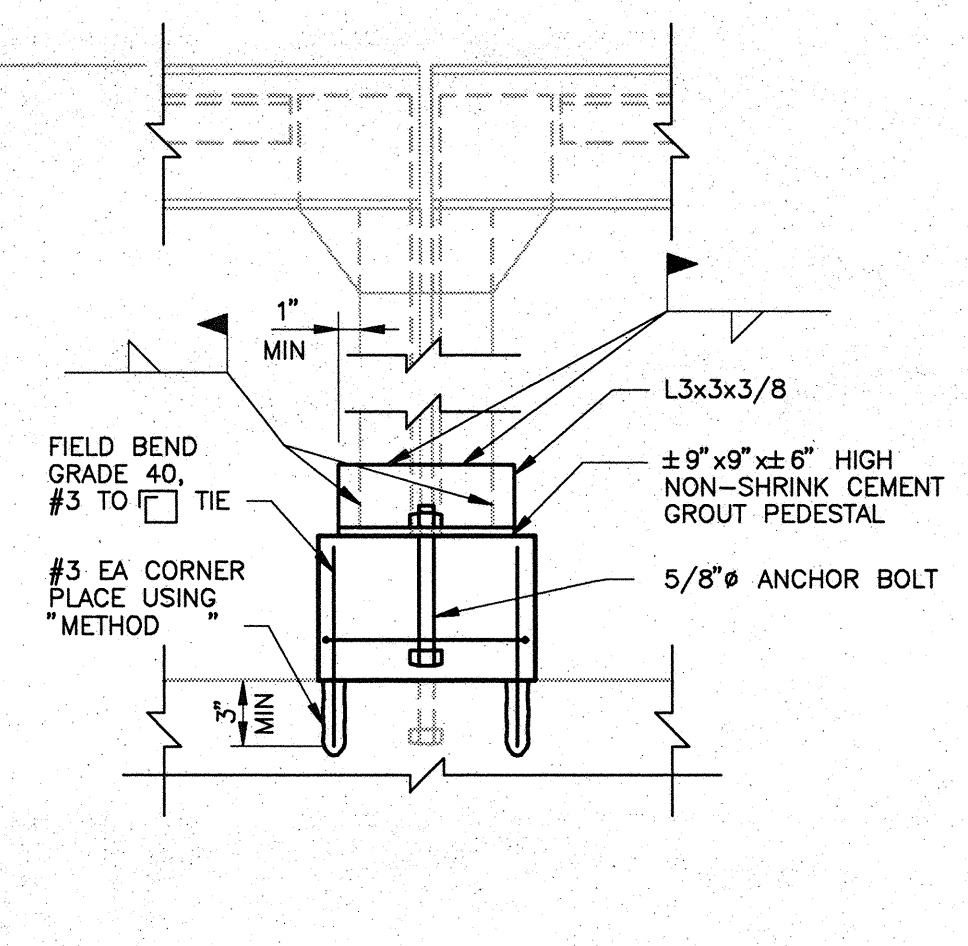
TYPICAL REPAIR AT EXISTING SHIPS LADDER BASE
DETAIL J
1 1/2" = 1'-0"



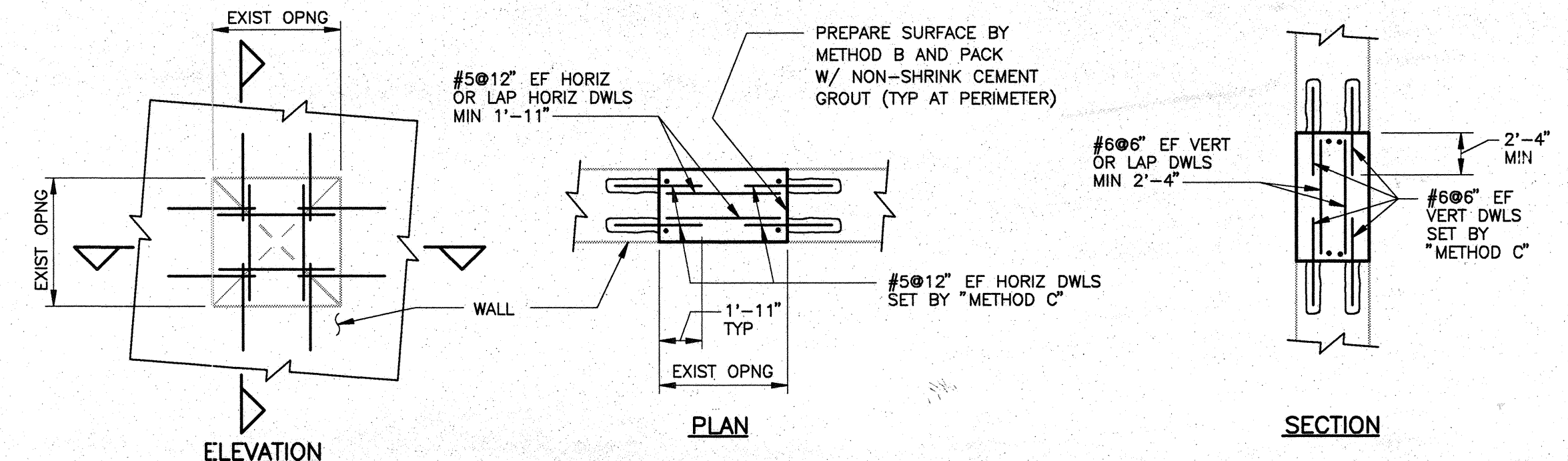
SECTION 1
FS-3
1 1/2" = 1'-0"



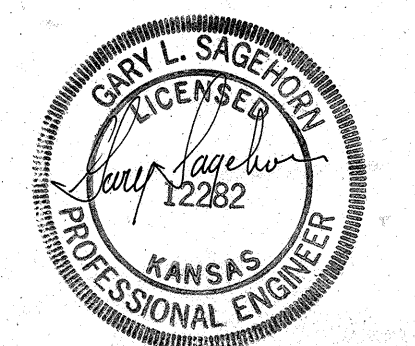
TYPICAL DEMOLITION AT COLUMN BASE



TYPICAL REPAIR AT COLUMN BASE



NOTE: SEE MODIFICATION AND REPAIR OF EXISTING CONCRETE NOTES
PATCH HOLES THROUGH EXISTING CONCRETE
DETAIL M
FS-3



FOR REFERENCE ONLY RECORD DRAWING

REV. NO.	DATE	DRWN	CHKD	REMARKS

DESIGNED BY: G. SAGEHORN
DRAWN BY: J. KRISS
SHEET CHK'D BY: G. SAGEHORN
CROSS CHK'D BY: G. SAGEHORN
APPROVED BY: G. SAGEHORN
DATE: OCTOBER 1992

CAMP DRESSER & MCKEE INC.
CDM
environmental engineers, scientists,
planners, & management consultants

CITY OF WICHITA, KANSAS
WATER TREATMENT PLANT IMPROVEMENTS
PHASE IIB

FILTER PIPE GALLERY
DETAILS

PROJECT NO.
2395-118-DNB
SHEET NO.
FS-7
SHEET 245 OF 293