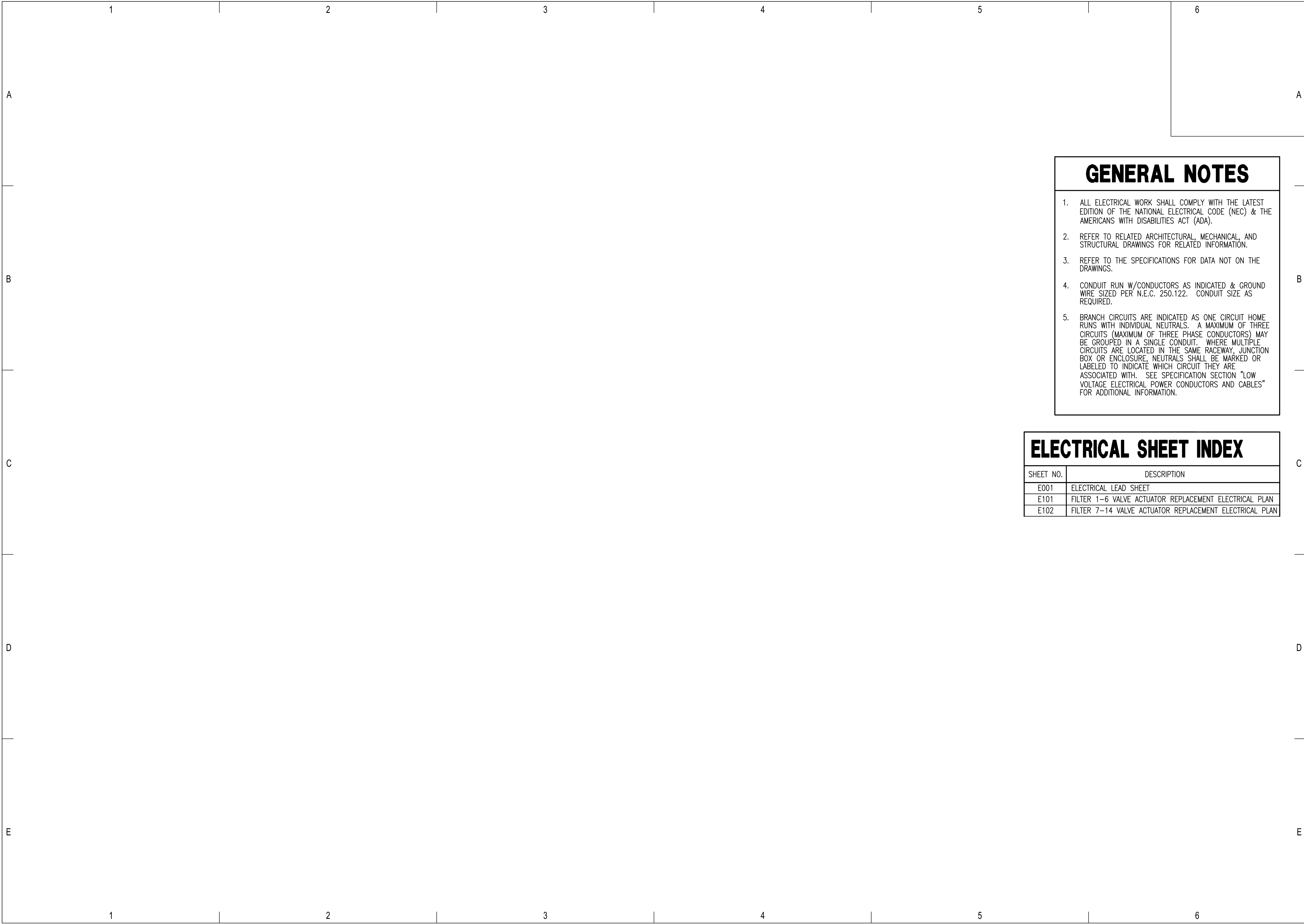


Saved: 10/08/2019 2:02:10 PM by: ZACH SLEPPY
 Plot Scale: 1:1 10/29/2019 1:02:23 PM Job: CA1
 U:\Wichita-Civil\2019\197043\004\Elec\Drawings\197043-004 - E01 ELECTRICAL LEAD SHEET



GENERAL NOTES

- ALL ELECTRICAL WORK SHALL COMPLY WITH THE LATEST EDITION OF THE NATIONAL ELECTRICAL CODE (NEC) & THE AMERICANS WITH DISABILITIES ACT (ADA).
- REFER TO RELATED ARCHITECTURAL, MECHANICAL, AND STRUCTURAL DRAWINGS FOR RELATED INFORMATION.
- REFER TO THE SPECIFICATIONS FOR DATA NOT ON THE DRAWINGS.
- CONDUIT RUN W/CONDUCTORS AS INDICATED & GROUND WIRE SIZED PER N.E.C. 250.122. CONDUIT SIZE AS REQUIRED.
- BRANCH CIRCUITS ARE INDICATED AS ONE CIRCUIT HOME RUNS WITH INDIVIDUAL NEUTRALS. A MAXIMUM OF THREE CIRCUITS (MAXIMUM OF THREE PHASE CONDUCTORS) MAY BE GROUPED IN A SINGLE CONDUIT. WHERE MULTIPLE CIRCUITS ARE LOCATED IN THE SAME RACEWAY, JUNCTION BOX OR ENCLOSURE, NEUTRALS SHALL BE MARKED OR LABELED TO INDICATE WHICH CIRCUIT THEY ARE ASSOCIATED WITH. SEE SPECIFICATION SECTION "LOW VOLTAGE ELECTRICAL POWER CONDUCTORS AND CABLES" FOR ADDITIONAL INFORMATION.

ELECTRICAL SHEET INDEX

| SHEET NO. | DESCRIPTION |
|-----------|--|
| E001 | ELECTRICAL LEAD SHEET |
| E101 | FILTER 1-6 VALVE ACTUATOR REPLACEMENT ELECTRICAL PLAN |
| E102 | FILTER 7-14 VALVE ACTUATOR REPLACEMENT ELECTRICAL PLAN |

**2020 WATER TREATMENT PLANT
 VALVE ACTUATOR REPLACEMENT**

 CITY OF WICHITA PROJECT NO. 448-2019-004278
 OCA NO. 639-001
 GARY JANZEN, P.E. - CITY ENGINEER

| | |
|-----------------------|--------------|
| Issue: | |
| | |
| | |
| | |
| | |
| | |
| | |
| | |
| | |
| | |
| JOB NO. | 197043-004 |
| DATE | OCTOBER 2019 |
| PM | |
| DESIGNED BY | SMS |
| DRAWN BY | ZJS |
| CHECKED BY | SMS |
| ELECTRICAL LEAD SHEET | |
| E001 | |