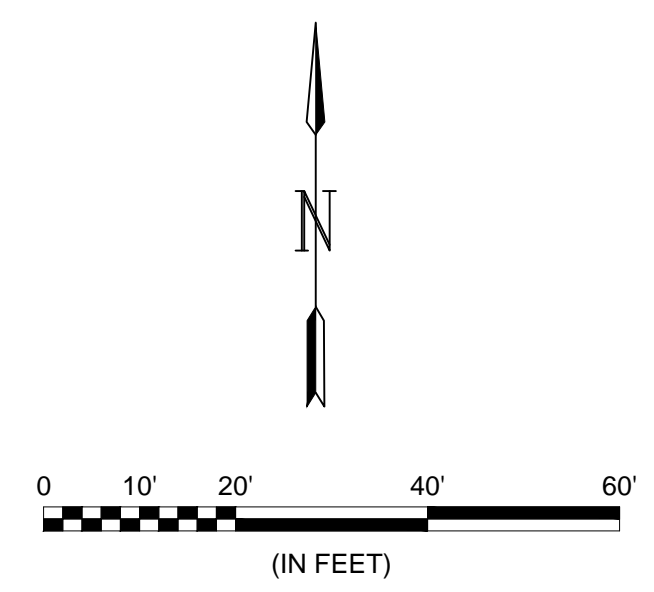
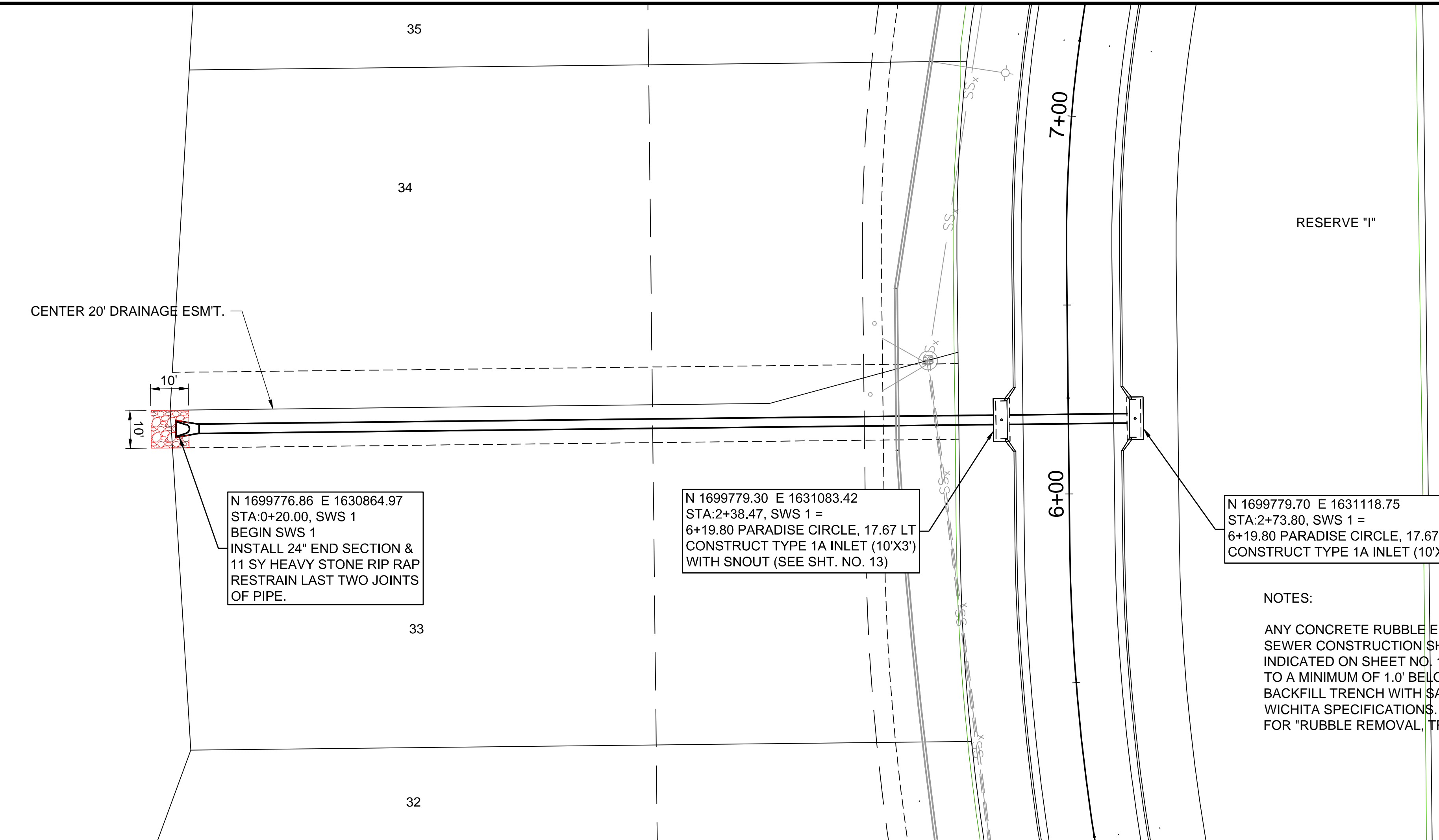


File: L:\2019\19T41003 - Emerald Bay 4th Add Ph1\Drawings\C3D\Paving\SWS Line 1.dwg Last Save: 10/14/2019 10:05 AM Last saved by: DRStandrich
 Last plotted by: Standrich, Daryl R. Plot Style: --- Plot Scale: 1:2.5849 Plot Date: 10/21/2019 4:05 PM Plotter used: None

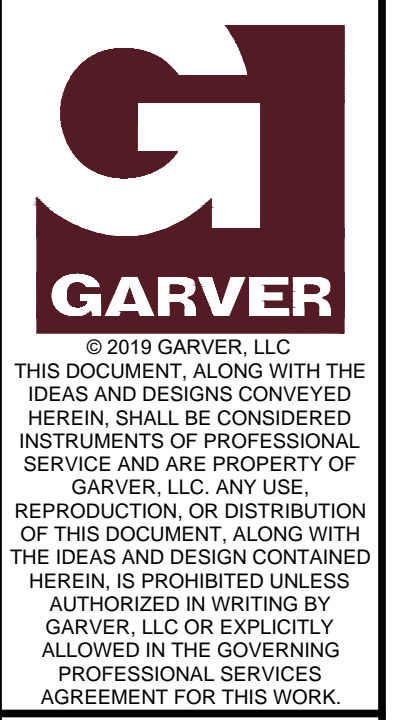
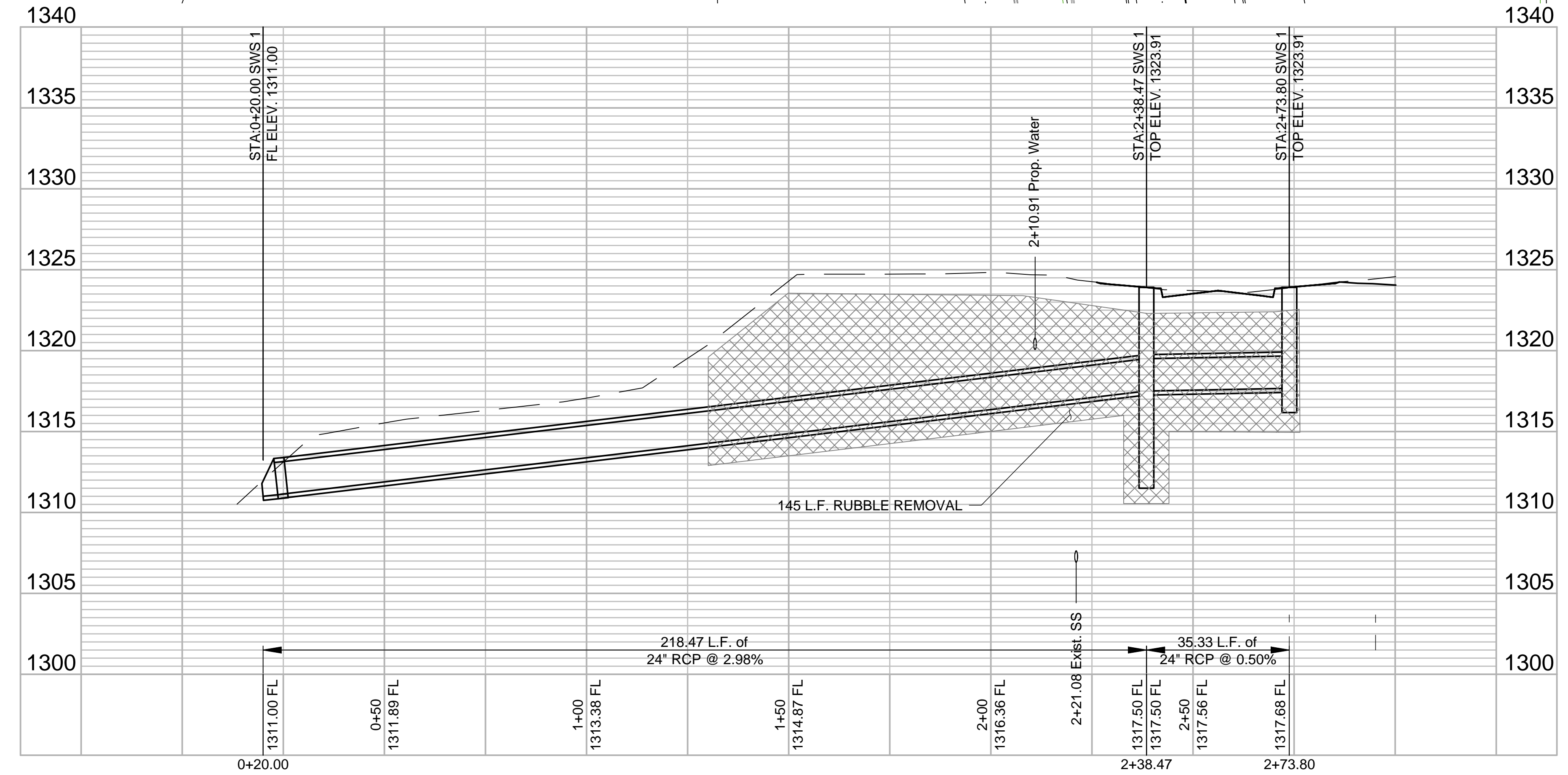


N 1699776.86 E 1630864.97
 STA:0+20.00, SWS 1
 BEGIN SWS 1
 INSTALL 24" END SECTION &
 11 SY HEAVY STONE RIP RAP
 RESTRAIN LAST TWO JOINTS
 OF PIPE.

N 1699779.30 E 1631083.42
 STA:2+38.47, SWS 1 =
 6+19.80 PARADISE CIRCLE, 17.67 LT
 CONSTRUCT TYPE 1A INLET (10'X3')
 WITH SNOOT (SEE SHT. NO. 13)

N 1699779.70 E 1631118.75
 STA:2+73.80, SWS 1 =
 6+19.80 PARADISE CIRCLE, 17.67 RT
 CONSTRUCT TYPE 1A INLET (10'X3')

NOTES:
 ANY CONCRETE RUBBLE ENCOUNTERED DURING STORM SEWER CONSTRUCTION SHALL BE STOCKPILED WHERE INDICATED ON SHEET NO. 15. RUBBLE WILL BE REMOVED TO A MINIMUM OF 1.0' BELOW BOTTOM OF PROPOSED PIPE. BACKFILL TRENCH WITH SAND BACKFILL PER CITY OF WICHITA SPECIFICATIONS. COST SUBSIDIARY TO BID ITEM FOR "RUBBLE REMOVAL, TRENCH."



8535 E. 21st St. N.
 Suite 130
 Wichita, KS 67206
 (316) 264-8008

REV.	DATE	DESCRIPTION	BY



CITY OF WICHITA
 WICHITA, KANSAS
 EMERALD BAY 4th ADD.
 PHASE 1 - PAVING

SWS Line 1

JOB NO.: 19T41003
 DATE: OCT. 2019
 DESIGNED BY: .
 DRAWN BY: .

BAR IS ONE INCH ON ORIGINAL DRAWING
 IF NOT ONE INCH ON THIS SHEET, ADJUST SCALES ACCORDINGLY.

DRAWING NUMBER

SHEET NUMBER 14 OF 25