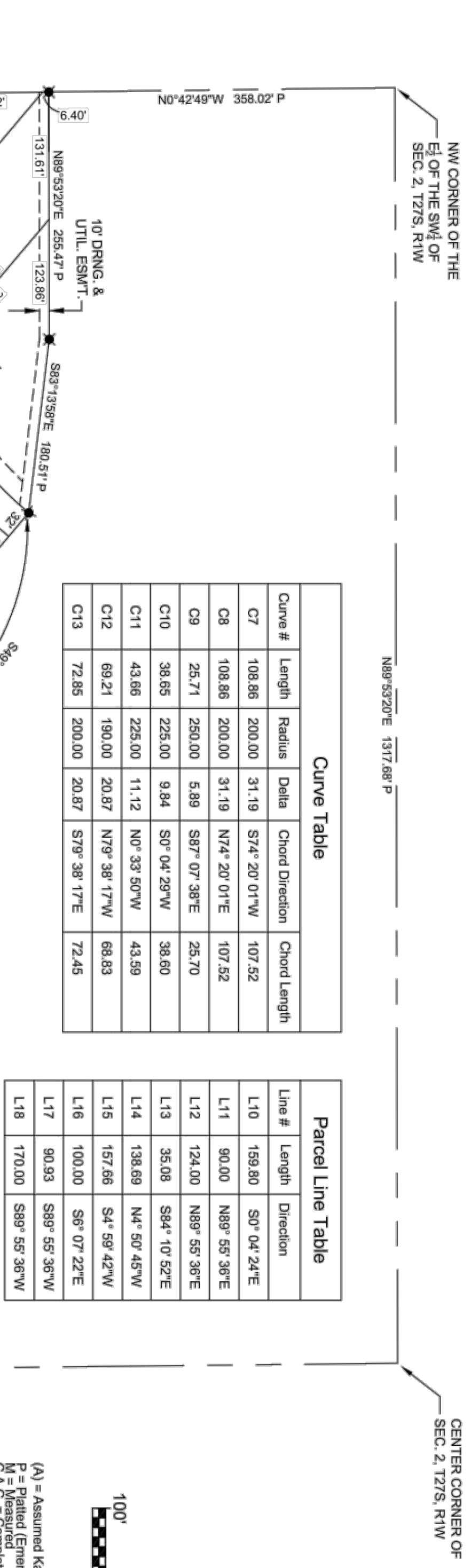


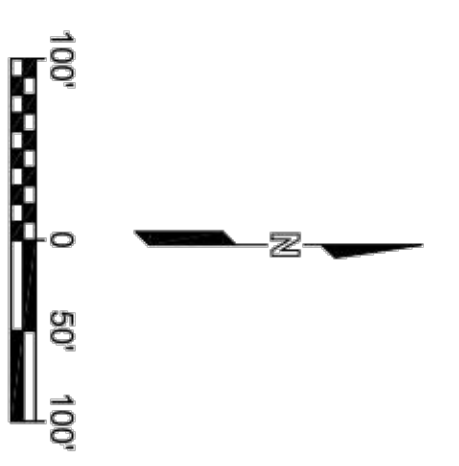
# EMERALD BAY ESTATES 4TH ADDITION

Wichita, Sedgwick County, Kansas



| Curve # | Length | Radius | Delta | Chord Direction | Chord Length |
|---------|--------|--------|-------|-----------------|--------------|
| C7      | 108.88 | 200.00 | 31.19 | S74°20'01"W     | 107.52       |
| C8      | 108.88 | 200.00 | 31.19 | N74°20'01"E     | 107.52       |
| C9      | 25.71  | 250.00 | 5.89  | S87°07'38"E     | 25.70        |
| C10     | 38.85  | 225.00 | 9.84  | S0°04'29"W      | 38.60        |
| C11     | 43.86  | 225.00 | 11.12 | N0°33'50"W      | 43.59        |
| C12     | 69.21  | 190.00 | 20.87 | N79°38'17"W     | 68.83        |
| C13     | 72.85  | 200.00 | 20.87 | S79°38'17"E     | 72.45        |

| Line # | Length | Direction   |
|--------|--------|-------------|
| L10    | 159.80 | S0°04'24"E  |
| L11    | 90.00  | N89°55'38"E |
| L12    | 124.00 | N89°55'38"E |
| L13    | 35.08  | S84°10'52"E |
| L14    | 138.89 | N4°50'45"W  |
| L16    | 157.66 | S4°59'42"W  |
| L18    | 100.00 | S8°07'22"E  |
| L17    | 90.33  | S89°55'38"W |
| L19    | 170.00 | S89°55'38"W |



(A) = Assumed Kansas Zone South Grid Bearing  
 P = Pinned (Emerald Bay Estates 3rd Addition)  
 C.A.C. = Complete Access Control

- SURVEY MARKER LEGEND**
- 5"x5" CONCRETE MONUMENT WITH 5/8" REBAR (FOUND - ORIGIN UNKNOWN)
  - 1/2" REBAR W/PEC CAP (FOUND)
  - 1/2" BAR IN THIMBLE (FOUND - ORIGIN UNKNOWN)
  - MONUMENT TO BE SET WITH STREET CONSTRUCTION PROJECT
  - ★ 5/8" REBAR W/GARVER CAP (SET)

BENCHMARK CHISELED SQUARE WITH DVIOT ON CONCRETE PAD, 1655 NORTH AND 888' EAST OF THE SOUTHEAST CORNER OF THE SW1/4 OF SEC. 2, 127S, R1W, ELEVATION = 1323.11 (NAVD83, 5/12A)

BENCHMARK CHISELED SQUARE WITH DVIOT ON EAST SIDE OF CONCRETE GATE FOUNDATION FOR 4900' W. 21ST ST. N., WICHITA, KANSAS. ELEVATION = 1323.85 (NAVD83, 5/12A)

| BLOCK | LOT NO.                            | ELEVATION (NAVD83, 5/12A) |
|-------|------------------------------------|---------------------------|
| 1     | 5 - 29 INCLUSIVE & 31-40 INCLUSIVE | 1321.5                    |

SW CORNER OF THE 1/12 OF THE SE1/4 OF SEC. 2, 127S, R1W, AND THE SOUTHWEST CORNER OF EMERALD BAY ESTATES SECOND ADDITION

DWG FILE: EMERALD BAY 4TH SURVEY BASE PROJECT NO. 18286001 APRIL 30, 2019