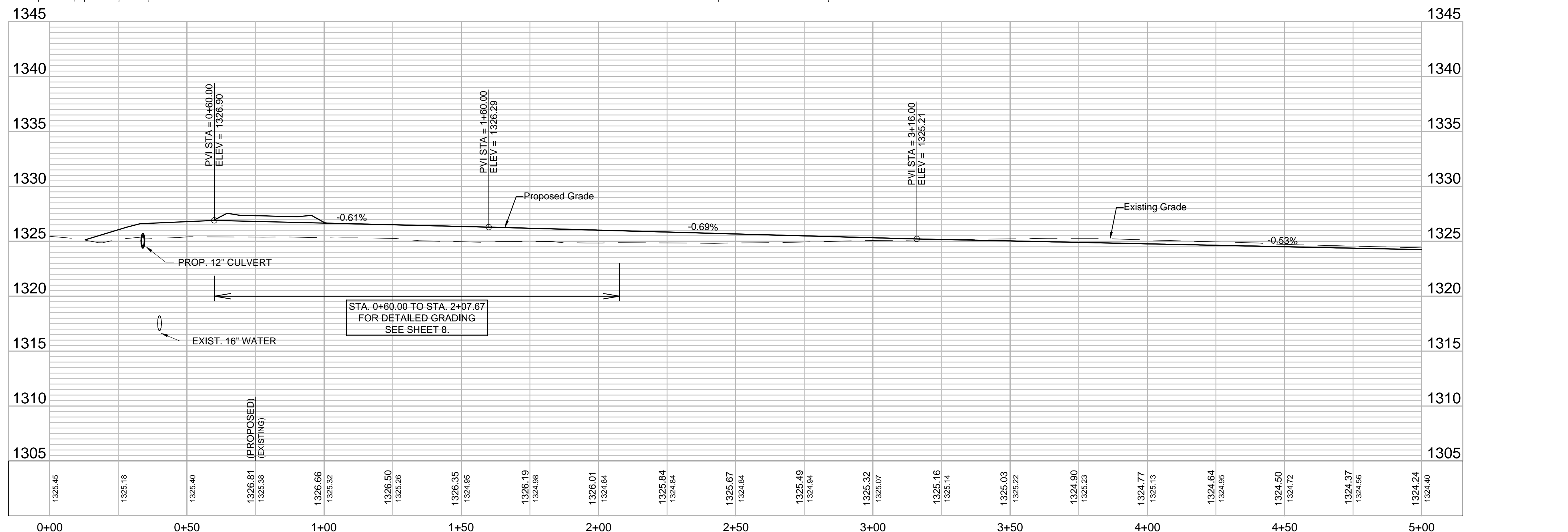
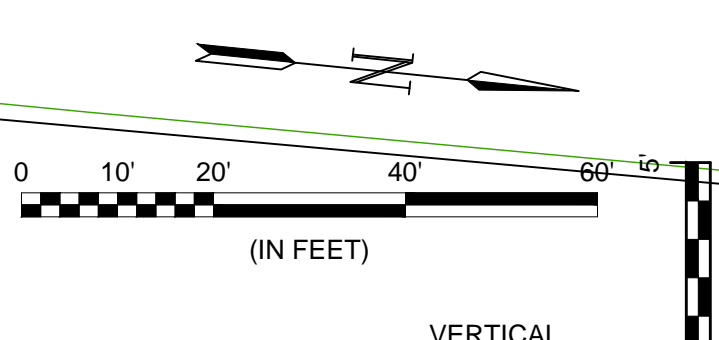
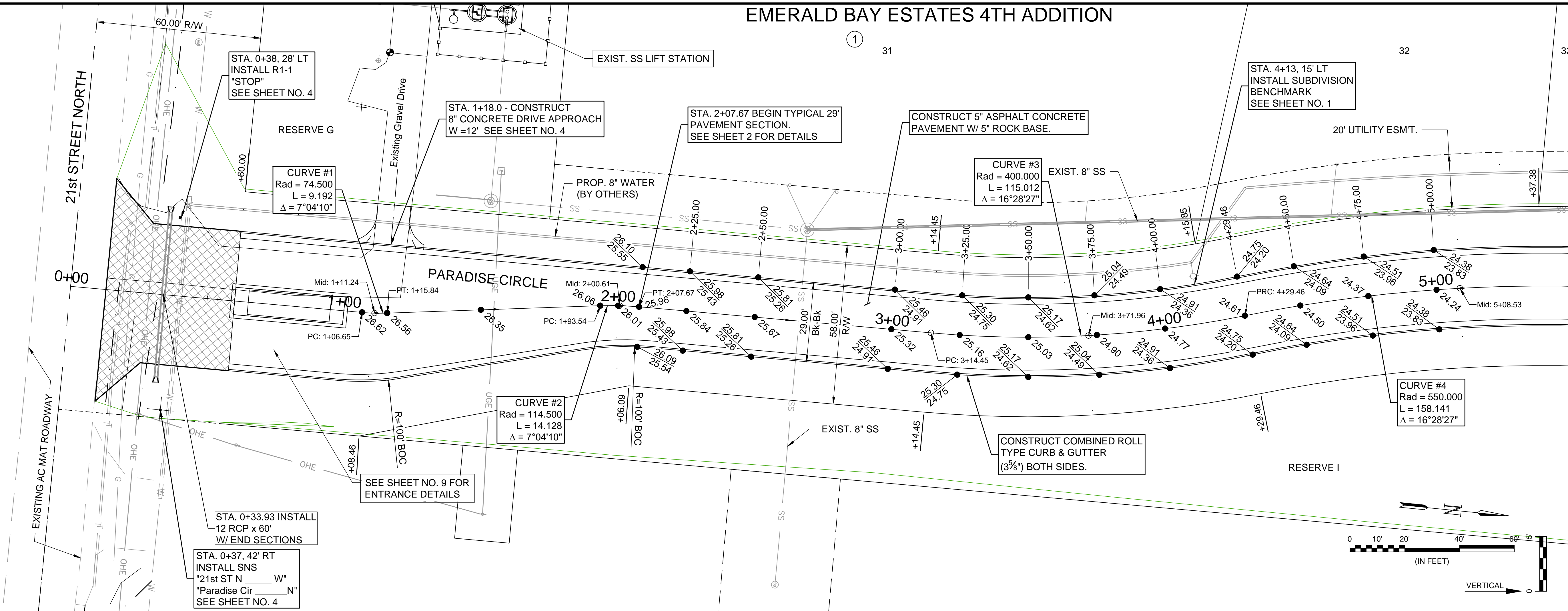


EMERALD BAY ESTATES 4TH ADDITION



© 2019 GARVER, LLC
THIS DOCUMENT, ALONG WITH THE IDEAS AND DESIGNS CONVEYED HEREIN, SHALL BE CONSIDERED INSTRUMENTS OF PROFESSIONAL SERVICE AND ARE PROPERTY OF GARVER, LLC. ANY USE, REPRODUCTION, OR DISTRIBUTION OF THIS DOCUMENT, ALONG WITH THE IDEAS AND DESIGN CONTAINED HEREIN, IS PROHIBITED UNLESS AUTHORIZED IN WRITING BY GARVER, LLC OR EXPLICITLY ALLOWED IN THE GOVERNING PROFESSIONAL SERVICES AGREEMENT FOR THIS WORK.

8535 E. 21st St. N.
Suite 130
Wichita, KS 67206
(316) 264-8008



REV.	DATE	DESCRIPTION	BY



CITY OF WICHITA
WICHITA, KANSAS
EMERALD BAY 4th ADD.
PHASE 1 - PAVING

PLAN & PROFILE
(1 OF 3)

JOB NO.: 19T41003
DATE: OCT. 2019
DESIGNED BY: EJJ
DRAWN BY: DRS

BAR IS ONE INCH ON ORIGINAL DRAWING
IF NOT ONE INCH ON THIS SHEET, ADJUST SCALES ACCORDINGLY.

DRAWING NUMBER

SHEET NUMBER **6** OF **25**

File: L:\2019\19T41003 - Emerald Bay 4th Add Ph1\Drawings\C3D\Paving\PLAN\PROFILE 1.dwg Last Save: 10/14/2019 9:13 AM Last saved by: DRS\standrich
 Last Plotted by: Standrich, Daryl R. Plot Style: --- Plot Scale: 1:2.5849 Plot Date: 10/21/2019 4:01 PM Plotter used: None