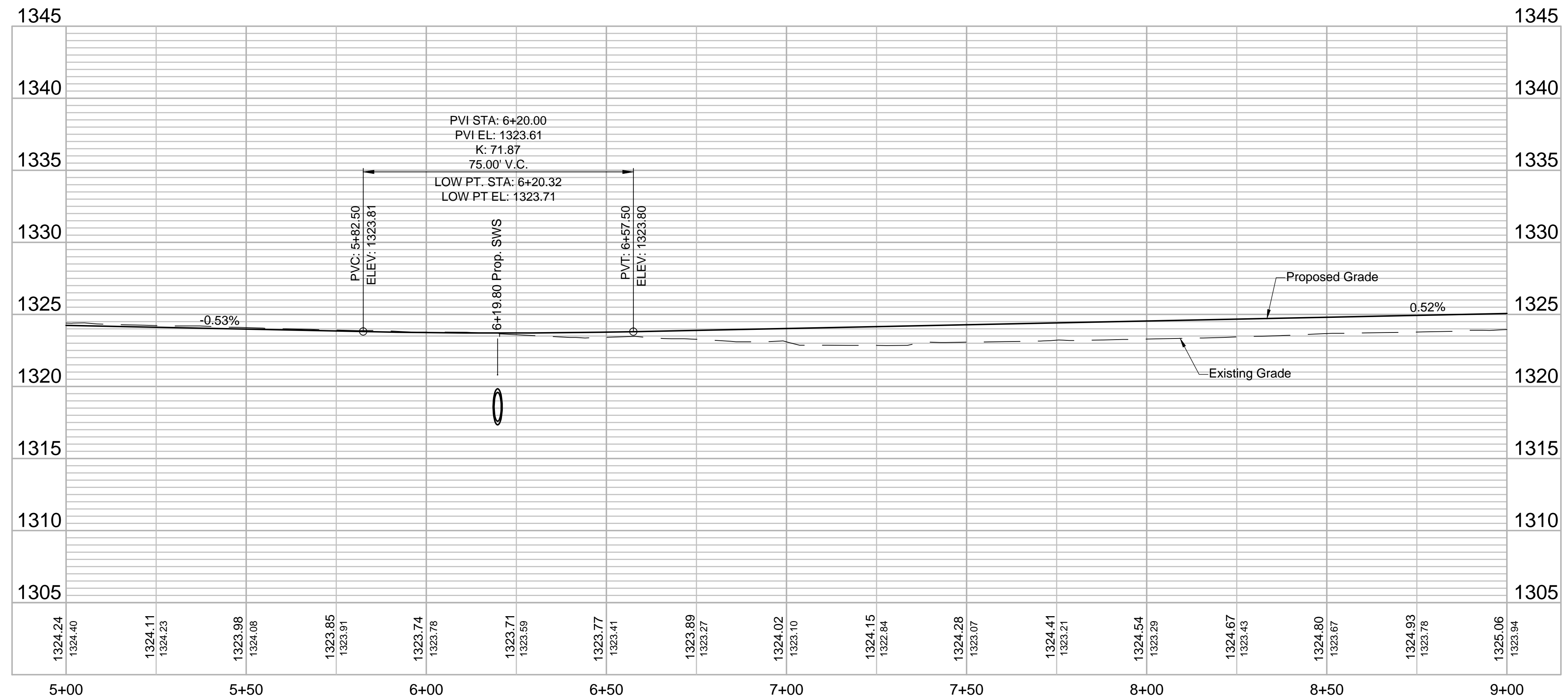
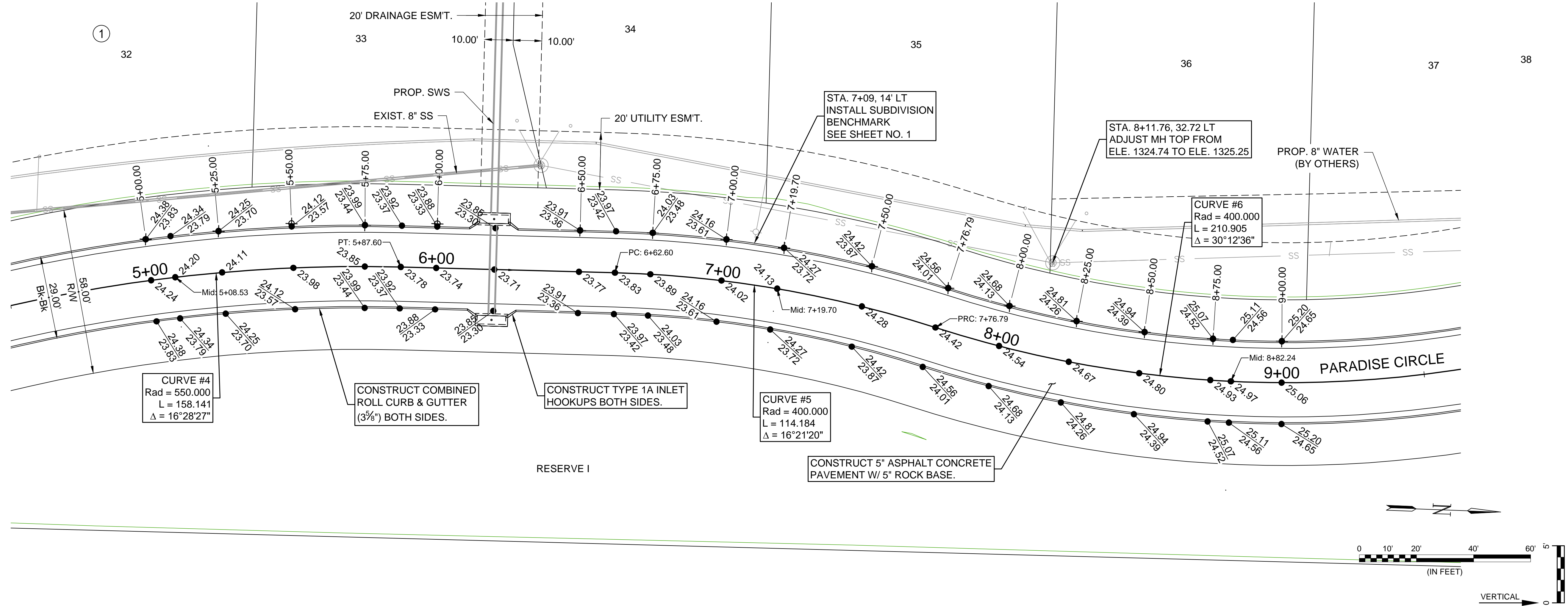


EMERALD BAY ESTATES 4TH ADDITION



© 2019 GARVER, LLC  
THIS DOCUMENT, ALONG WITH THE IDEAS AND DESIGNS CONVEYED HEREIN, SHALL BE CONSIDERED INSTRUMENTS OF PROFESSIONAL SERVICE AND ARE PROPERTY OF GARVER, LLC. ANY USE, REPRODUCTION, OR DISTRIBUTION OF THIS DOCUMENT, ALONG WITH THE IDEAS AND DESIGN CONTAINED HEREIN, IS PROHIBITED UNLESS AUTHORIZED IN WRITING BY GARVER, LLC OR EXPLICITLY ALLOWED IN THE GOVERNING PROFESSIONAL SERVICES AGREEMENT FOR THIS WORK.

8535 E. 21st St. N.  
Suite 130  
Wichita, KS 67206  
(316) 264-8008

REV.	DATE	DESCRIPTION	BY



CITY OF WICHITA  
WICHITA, KANSAS  
EMERALD BAY 4th ADD.  
PHASE 1 - PAVING

PLAN & PROFILE  
(2 OF 3)

JOB NO.: 19T41003  
DATE: OCT. 2019  
DESIGNED BY: EJJ  
DRAWN BY: DRS

BAR IS ONE INCH ON ORIGINAL DRAWING  
IF NOT ONE INCH ON THIS SHEET, ADJUST SCALES ACCORDINGLY.

DRAWING NUMBER

SHEET NUMBER **7** OF **25**

File: L:\2019\19T41003 - Emerald Bay 4th Add Ph1\Drawings\C3D\Paving\PLAN-PROFILE 2.dwg Last Save: 10/14/2019 10:53 AM Last saved by: DRSandrich  
Last plotted by: Sandrich, Daryl R. Plot Style: --- Plot Scale: 1:2.5649 Plot Date: 10/21/2019 4:02 PM Plotter used: None